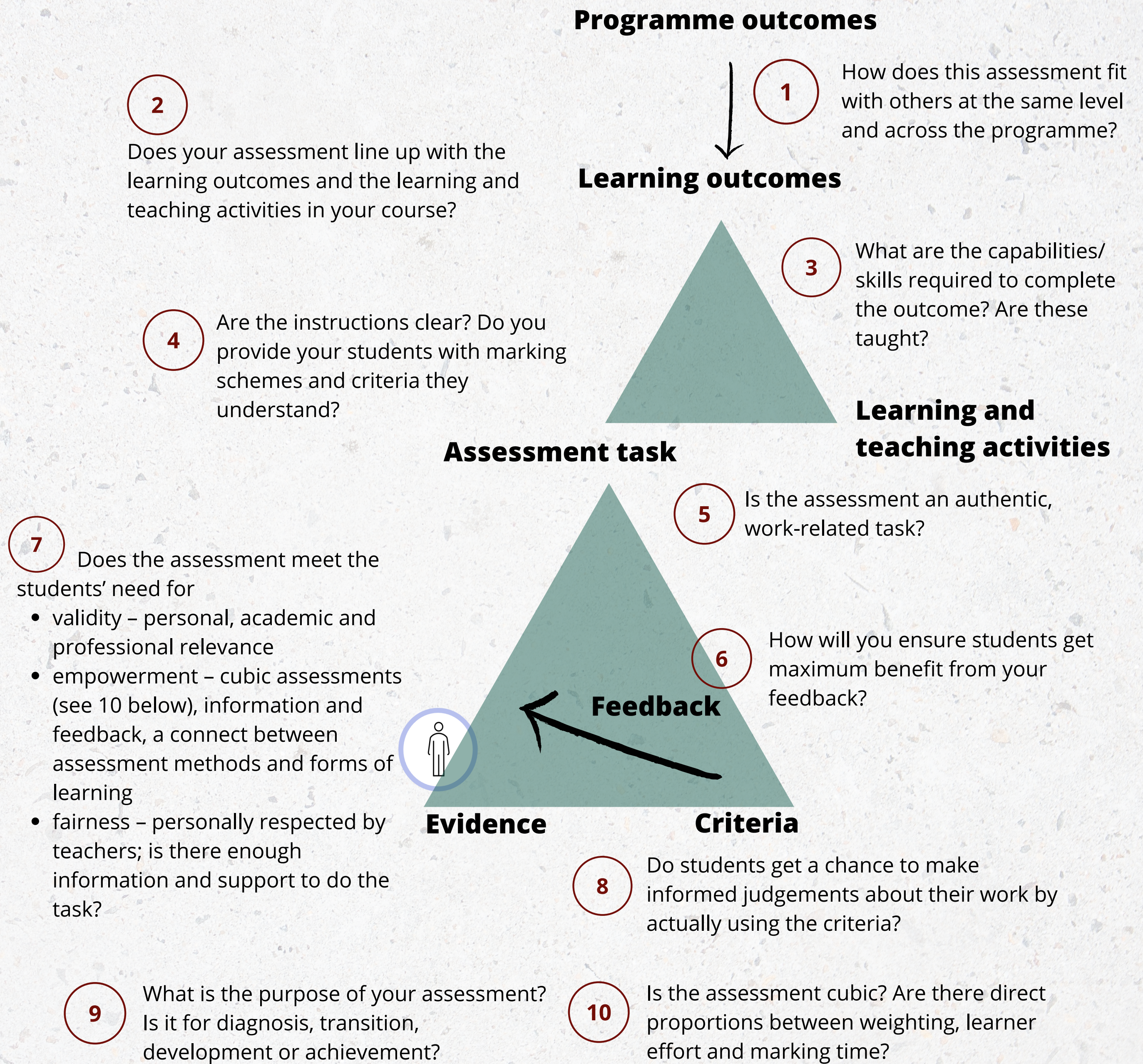


A starter for 10

Questions to begin thinking about improving assessments

The diagram shows the main elements of learning, teaching and assessment, aligned to the course and programme outcomes. Assessment and feedback are large topics and these 10 questions are by no means comprehensive, just ones we think are important to start a conversation about good assessment practice.



The student contribution to the assessment dynamic.

Too often In the assessment dynamic, the student's role is limited to producing the evidence. Teachers create the task, decide the criteria, evaluate and give feedback. Our question, as you design your assessments, is, "How much more of a learning experience would it be if students weren't stuck in the evidence corner, but participated in the other three parts of the dynamic?" How might your learners contribute to assessment processes? Go to the [Constructive Assessment sheet](#) for more details