

Remote Desktop App instructions

(Windows 10)



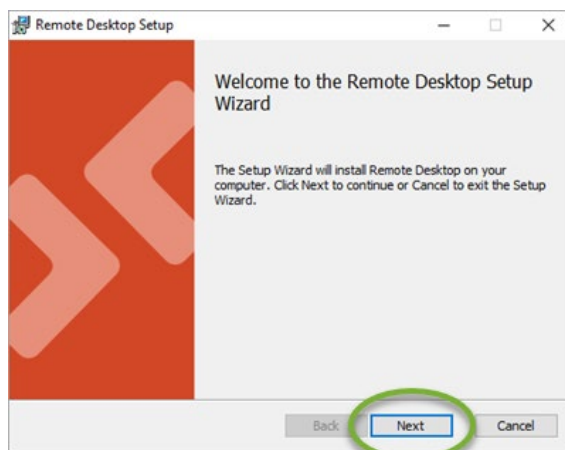
Installation of the Remote Desktop App

To download the 64-bit Windows Desktop client (MSRDC) application installer, go to:
<https://go.microsoft.com/fwlink/?linkid=2068602>

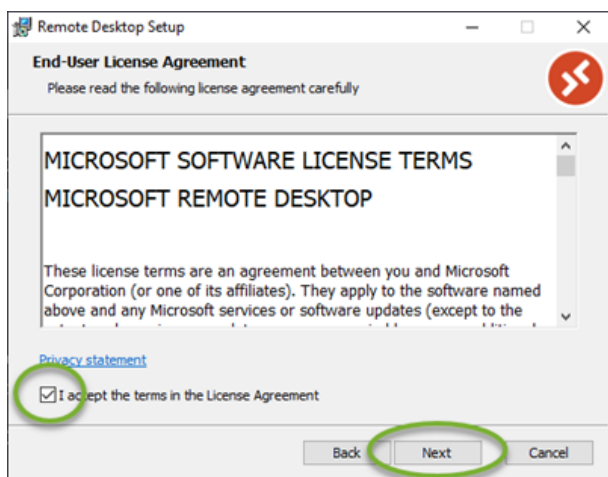
After the download has finished, go to the folder where you saved the installation file and double-click to start the installation process.

(You will not require administrator rights to install the Windows Desktop client application.)

When the Remote Desktop Setup welcome screen opens, click **Next** to continue.

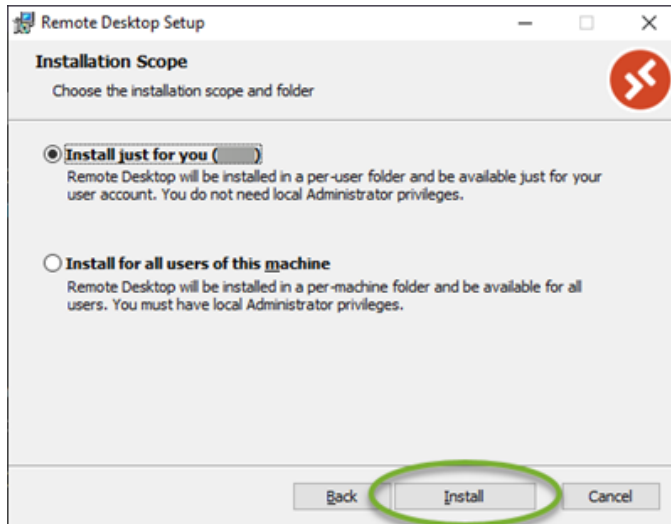


On the End-User License Agreement screen, mark the checkbox **I accept the terms of the License Agreement**, then click **Next**.



Remote Desktop App instructions

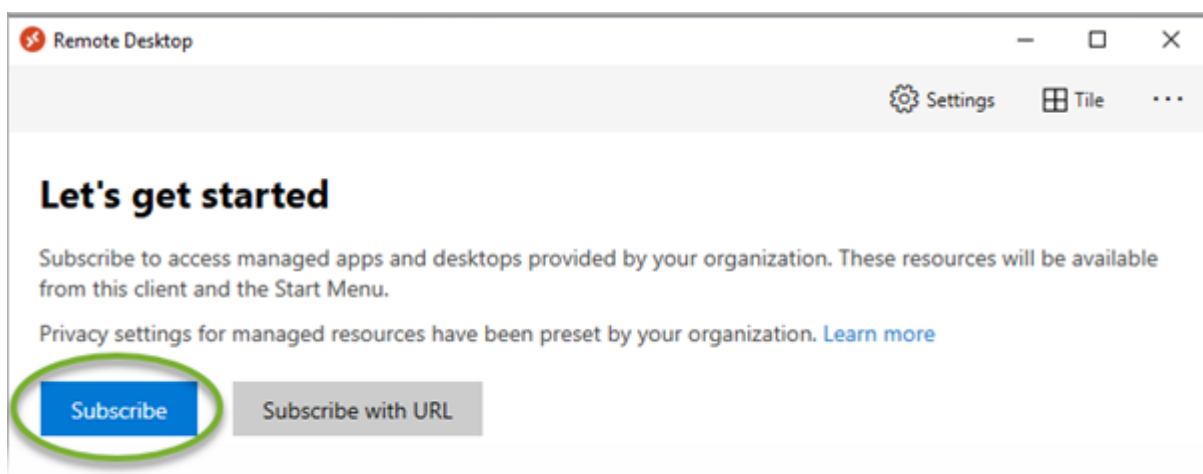
On the Installation Scope screen, accept the default selection of **Install just for you** then click **Install**.



On the Completed the Remote Desktop Setup Wizard screen, click **Finish** to complete the installation and begin configuring the client.

Configure the Remote Desktop app

On the Let's get started screen, click **Subscribe**.

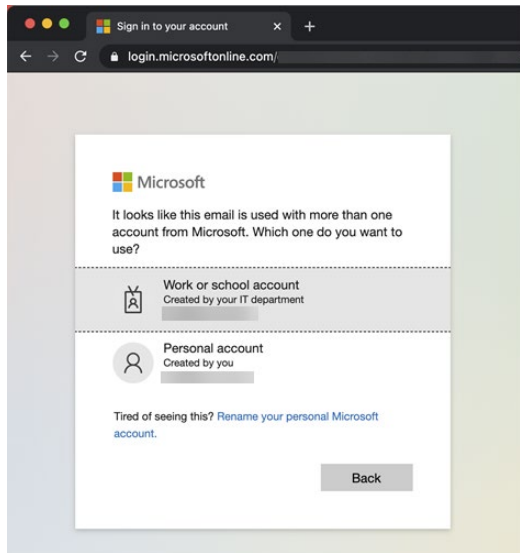


Remote Desktop App instructions



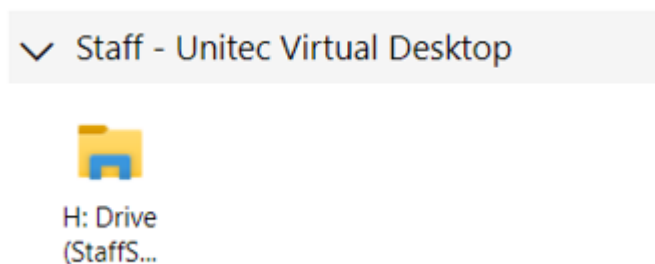
On the Microsoft Sign in page, enter your Unitec email address then click **Next**.

Click **Work or school account**. Do **not** use any personal Microsoft account you might own.



Continue your sign in using your Unitec email and password, then click **Sign in**. Authenticate with 2-factor if requested.

Click on the H: Drive icon as below.



Enter you Unitec credentials once more and the H: drive will open in a new Explorer window.