

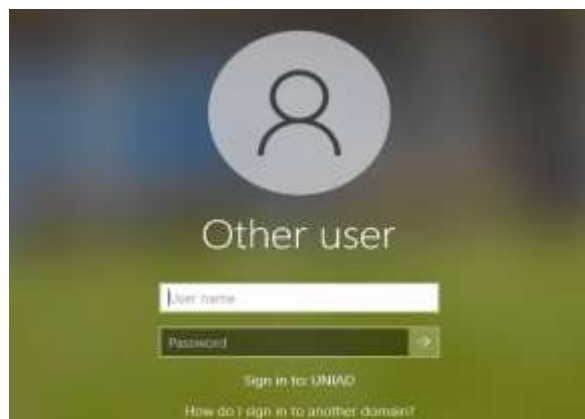
How to use the Unitec Virtual Desktop 2022

The updated virtual desktops now have a Windows 10 Operating System. You can use some Windows functions without having to go to UVD - Internet browsing, web print, OneDrive.

Log in to Windows with your Unitec account (not your email address).

You will then be presented with the Thin Client Windows 10 desktop environment.

This environment will provide access to connect to UVD, Office 365 and the Edge browser for internet access.



Using UVD

Double click UVD Remote Desktop icon on the desktop.



Upon opening the UVD Remote Desktop for the first time the “We’re finding resources...” message will appear.

Please wait until the next screen shows.



You will then be prompted to select an account to be used.

Select account by clicking on it.

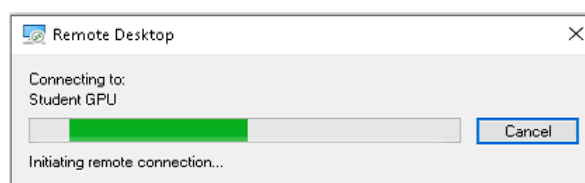
(For students this will be:
<username> @myunitec.ac.nz)



Please be patient and wait for the resources to be discovered.



Once feeds have loaded, double click on the required Virtual Desktop environment and it will start loading.



When prompted, enter your password and click OK.



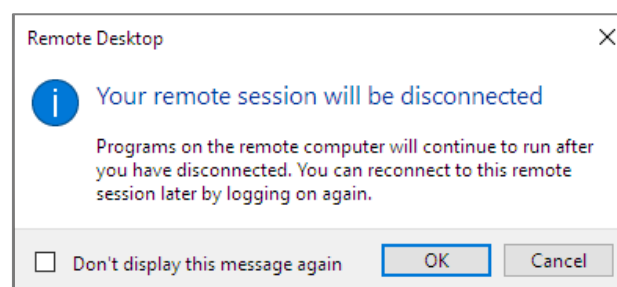
The Unitec Virtual Desktop will start loading.



Closing UVD

If you click the close button on the connection bar at the top of the screen, this will close your UVD session and return to the Windows 10 environment of the thin client.

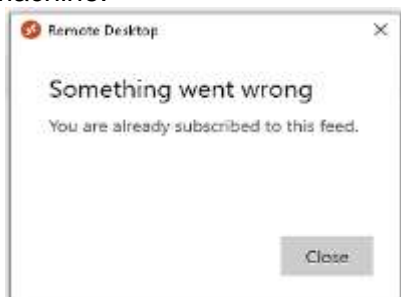
However, it is recommended that the user logs out of each environment (UVD and the thin client) when finished.



Known Problems / Messages

Already subscribed to feeds:

End user has opened the Remote Desktop client previously on the same machine.



AVD has no available sessions available. Please try again later (at least five minutes); contact the Unitec Service Desk if issue persists.



User Profile failed to attach. Please contact the Unitec Service Desk if issue persists.



User clicked on "Subscribe to feed" before the automatic feed subscription has completed. This results in duplicate feeds. This will not allow extra connections to UVD

