

Assessment in lockdown

What do you do if you can't run your current assessments? Work through this process for all your remaining assessments.

Covid-19 Information

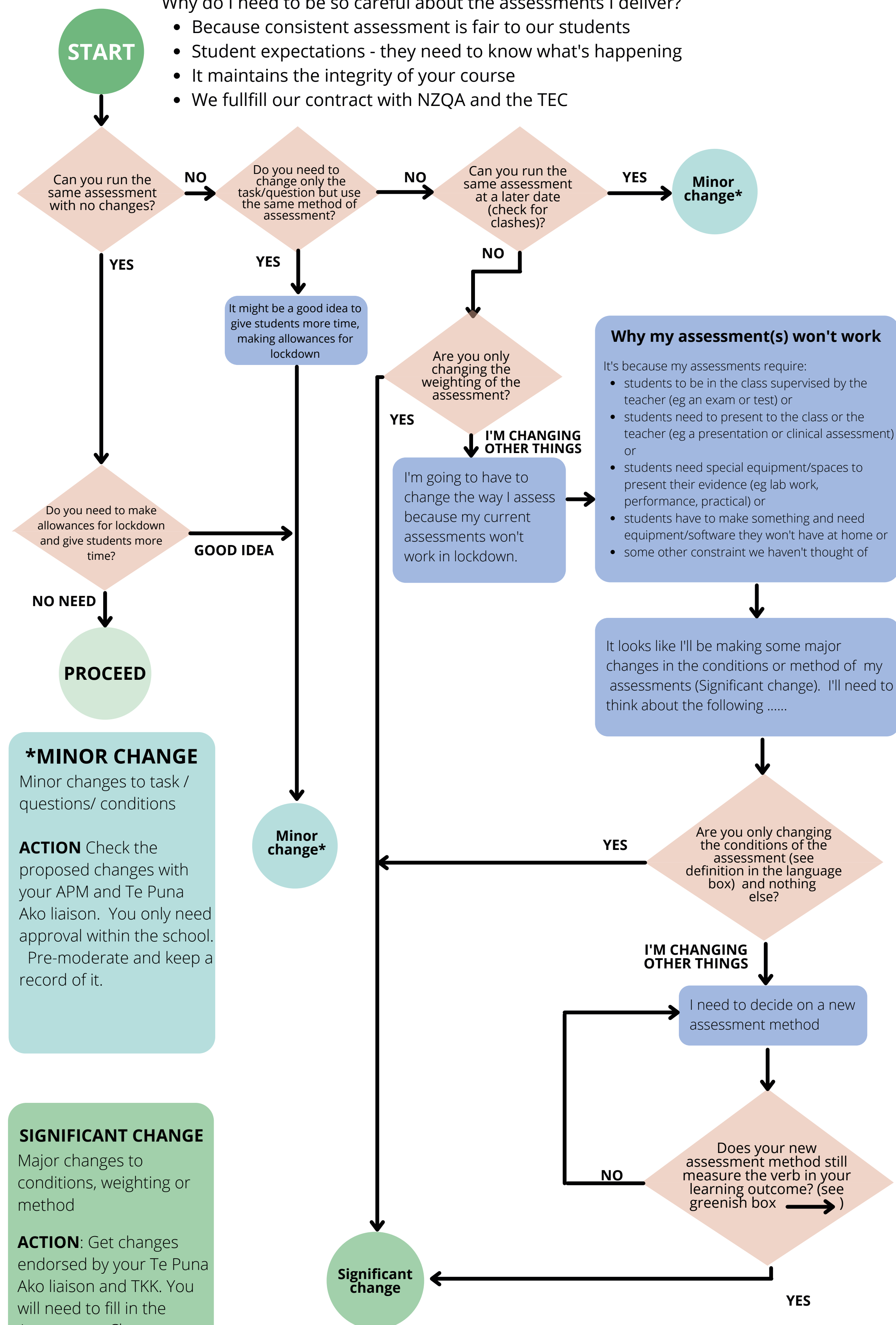
Covid-19
Updates, forms, information



Making decisions about changes to assessment

Why do I need to be so careful about the assessments I deliver?

- Because consistent assessment is fair to our students
- Student expectations - they need to know what's happening
- It maintains the integrity of your course
- We fulfill our contract with NZQA and the TEC



Inform your students about all assessment changes
These changes are temporary. If you want to make them permanent, you'll need to go through the Type1/2 change process
Check Gradebook mirrors any changes made

Unitec's assessment language

Assessment **method/nature** is the **type** of assessment eg report, essay, demonstration

Conditions are the rules that control the assessment eg invigilated exam, closed/open book, due date

Weighting is the proportion of marks allocated to that assessment

Task and questions are the specific requirements students provide evidence for

Learning outcomes are statements of what students will learn in the course. You cannot change these in this process

Validity is the assurance that we are measuring the performance described in our learning outcomes in our assessments

ARC - Academic Recovery Committee maintains academic quality during lockdowns

Important things to check when changing assessments

Your course and programme regulations

Your course descriptor or programme document may have specific assessment requirements you will need to follow. Check with your Academic Programme Manager

Unitec's policies

- Assessment and Grading Procedures and Regulations
- Examinations Regulation
- Moderation of Assessment Procedure

External regulators

Outside organisations may have requirements for the methods of assessment in qualifications they recognise. Check with your APM.

Special cases

Given the extraordinary nature of lockdown, it's inevitable that some assessments can't be changed. An example is work practicums or courses with work integrated learning assessments

Talk to TKK or Te Puna Ako for guidance if you think you're in this position

Learning outcome verbs and methods

It's important, if we change assessments, that we keep them aligned with our learning outcomes.

This means that our assessments must measure what students do with the knowledge or skills they are learning as stipulated by the verbs in learning outcomes.

If a learning outcome states "Explain" the method of assessment and task must measure the ability of students to explain not simply measure their ability to recall.

If the verb is "Apply" then our assessment must allow students to show evidence of application.