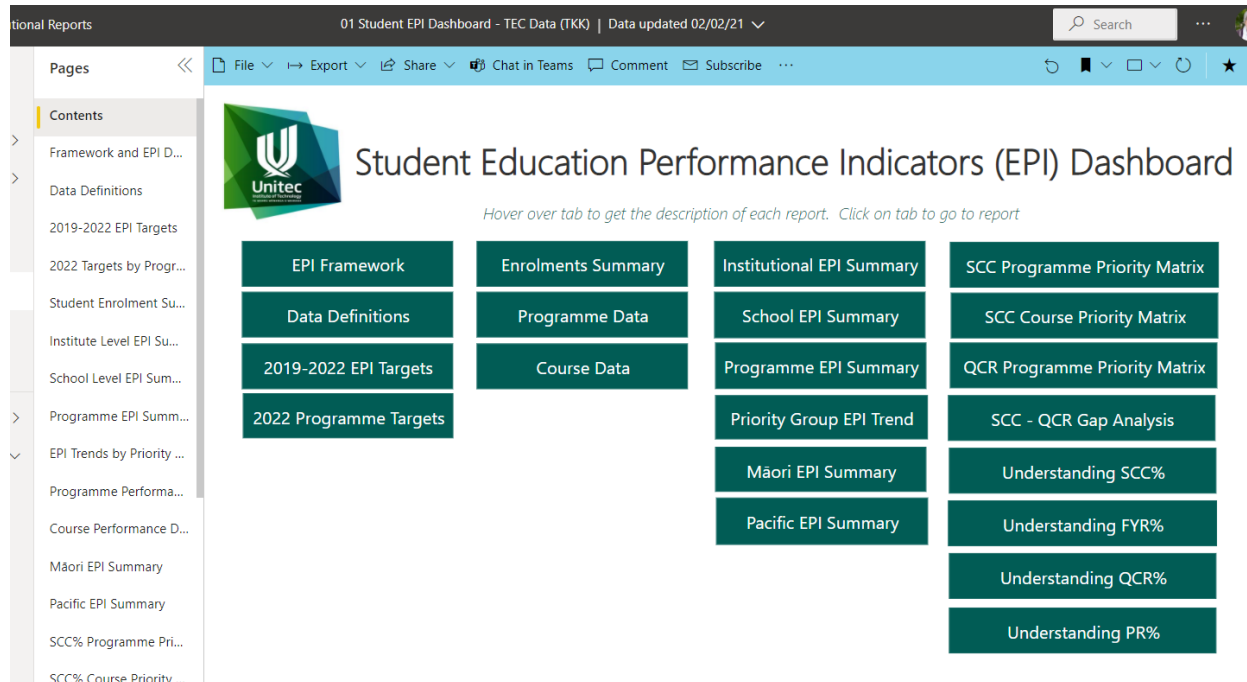


## Introducing the Student EPI Dashboard

Enter PowerBI, click on Institutional Reports, and scroll down the list of possible options to the icon called **01-Student EPI Dashboard – TEC Data**. Click on that and you will find yourself at the following screen.



This Dashboard draws its data from statistics published nationally three times a year, in February, May and August, by the Tertiary Education Commission (TEC). TEC receives the information from Unitec in what is called the Single Data Return (SDR). The data is retrospective – ie what is received in one year are the results for the previous year.

(The information on the screen can be hard to see. If you don't want to use binoculars(!) click on the rectangle on the blue bar at the top of your screen to move to 'full-screen'. To exit full-screen mode, simply push 'Escape' on your keyboard.

The page above is the first page you come to. On this screenshot you can see that contents list on the left of the screen are repeated in the green boxes.

**A good place to start** in this Dashboard is the 'EPI Framework' tab. There the Educational Performance Indicators are explained:

File Export Share Chat in Teams Comment Subscribe

## Student Success Framework and EPI Definitions Back

This dashboard provides student experience and performance data designed to provide input into school, programme and course evaluation planning process. If you have any queries about any of the information provided, contact your school Administrator Academic Quality (AAQ) or email [TKKinsights@unitec.ac.nz](mailto:TKKinsights@unitec.ac.nz) (with 'EPI dashboard' in the subject line).

### The Way We Measure Student Success

Student educational performance is measured using the four mandatory education performance indicators (EPIs) that follow the student journey from completing their first year to graduation. All New Zealand tertiary institutes are measured and benchmarked on these metrics. Graduate outcomes are also measured using a survey to all students who graduate each semester and are reported in the graduate dashboard.

**EPI #1: Successful Course Completion Rate** – the proportion of course enrolments (calculated on an EFTS delivered basis) ending in a given year that have been successfully completed.

**EPI #2: Cohort-based First Year Retention Rate** – the proportion of students in a cohort who enrol in a qualification at the same level in the year after they enter the cohort. First year retention rates are measured for students who are enrolled in a 2 EFTS or above qualification at level 4 and above.

**EPI #3: Cohort-based Qualification Completion Rate** – the proportion of students in a cohort who go on to complete a qualification at the same level as the cohort. This is measured using a set time period that differs by NZQF level.

- For levels 1 to 3, a two-year time period is used, eg qualification completion rates will only be reported once the cohort has tracked for 2 years.
- For levels 4 to 7 non degree, a four-year time period is used, eg qualification completion rates will only be reported once the cohort has tracked for 4 years.
- For levels 7 (degree) and above, a six-year time period is used, eg qualification completion rates will only be reported once the cohort has tracked for 6 years.

**EPI #4: Student Progression Rate from Level 1-4** – the proportion of students completing a qualification (level 1-4) who then enrol, within a given time period, in a higher-level qualification. The enrolment in a higher level qualification can be at any TEO. Rates shown in this dashboard may differ slightly to TEC reporting as we are only able to measure internal progression (within Unitec) as we aren't able to access progression to another TEO.

**Graduates Employed, Studying or Combining (GESCO)** – the proportion of students who have graduated that are either employed, studying or both. This is based off survey data conducted by students who have graduated.

**Relevance of Qualification to Employment** – the proportion of graduate students who are employed who rate their main job as 'highly related' or 'moderately related' to their qualification. This is based off survey data conducted by students who have graduated.

### Representation of how EPIs & graduate outcomes track students' achievement

Full details on EPI definitions and methodologies can be found on the TEC website. Click below:  
<https://www.tec.govt.nz/assets/Forms-templates-and-guides/631b96b442/EPI-Guidelines-Methodology-Update-August-2018.pdf>

Click on 'Data Definitions' in the contents list for useful information such as the definition of NaN – Not a Number. This is put instead of 0 if there is no data available (eg there will be NaN for Progression if your Programme is not Levels 1-4).

**Have a look around this Dashboard**, for example there are institutional, School, Programme, and Priority Group summaries. *If you want to use the filters and can't remember how, they operate on the same principles noted in the 'Filtering for Specific Data' video/guide.*

In this Dashboard you can also view the **Unitec Institutional and School targets** for improving our EPIs under the '2019-2022 EPI Targets' tab:

File Export Share Chat in Teams Comment Subscribe

## 2019-2022 Institutional EPI Targets Back

The tables provide a summary of the 2019-2022 institutional, school and priority group targets approved by Academic Board.

Unitec Targets	2019	2020	2021	2022
1. Successful Course Completion	82.0%	83.0%	84.0%	85.0%
2. Qualification Completion	55.0%	56.0%	58.0%	60.0%
3. First Year Retention	72.0%	73.0%	74.0%	75.0%
4. Progression	32.5%	33.0%	33.5%	34.0%
5. Employment/Further Study	85.0%	85.0%	85.0%	85.0%

Māori	2019 Target	2020 Target	2021 Target	2022 Target
1. Successful Course Completion	72.3%	76.3%	81.3%	85.0%
2. Qualification Completion	48.5%	52.0%	56.0%	60.0%
3. First Year Retention	65.0%	68.5%	72.5%	75.0%
4. Progression				
5. Employment/Further study	85.0%	85.0%	85.0%	85.0%

**2022 School Targets** (Note: no targets have been set for years prior to 2022)

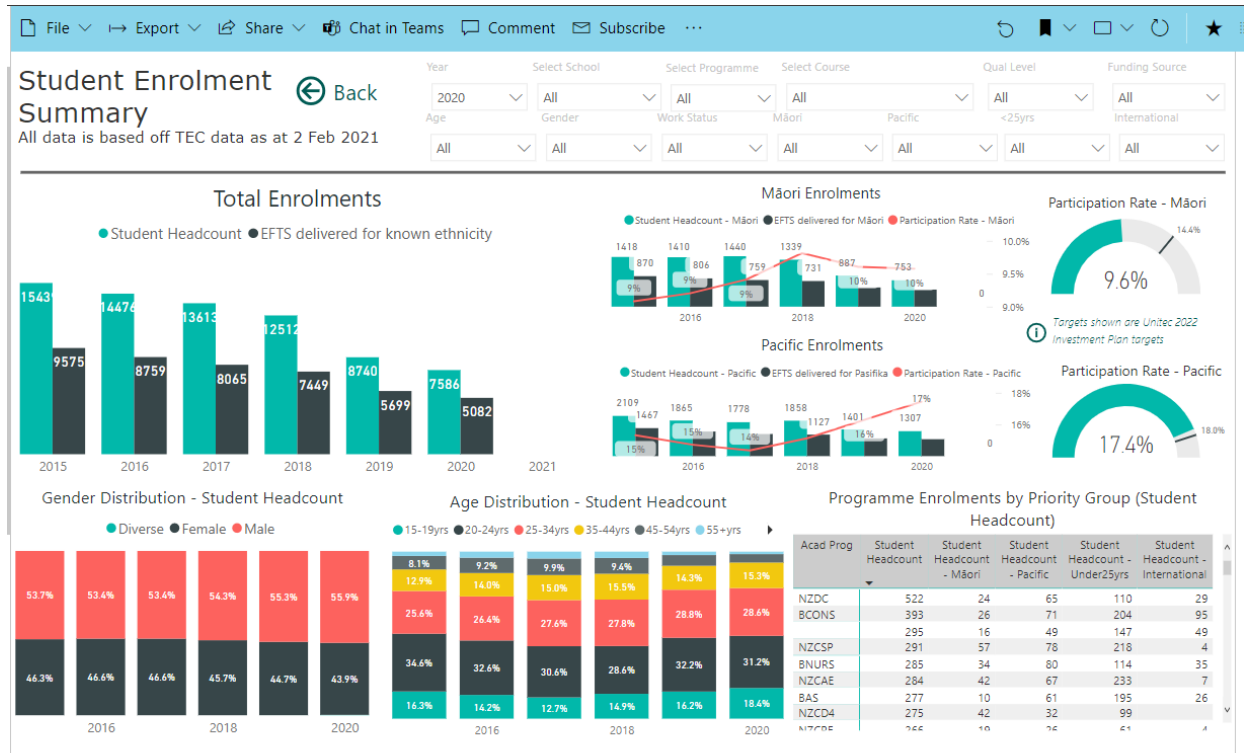
School	Successful Course Completion Target	Qualification Completion Target	First Year Retention Target	Progression Target
Applied Business	86.0%	61.0%	80.7%	
Architecture	88.0%	55.0%	84.0%	25.0%
Bridgepoint	74.0%	73.6%		65.6%
Building Construction	89.2%	49.0%	79.1%	
Community Studies	85.0%	57.2%	79.5%	
Computing, Electrical and Applied Technology	90.0%	70.0%	79.0%	25.0%
Creative Industries	92.5%	66.0%		
Environmental & Animal Sciences	83.0%	70.0%	82.0%	30.9%
Healthcare & Social Practice	88.0%	65.0%	80.3%	25.0%
Trades & Services	80.0%	45.0%	75.0%	30.7%

Pacific	2019 Target	2020 Target	2021 Target	2022 Target
1. Successful Course Completion	71.0%	75.0%	80.0%	85.0%
2. Qualification Completion	46.0%	50.0%	55.0%	60.0%
3. First Year Retention	60.0%	65.0%	70.0%	75.0%
4. Progression				
5. Employment/Further study	85.0%	85.0%	85.0%	85.0%

International	2020 Target	2021 Target	2022 Target
1. Successful Course Completion	92.0%	92.0%	92.0%
2. Qualification Completion	78.0%	79.0%	80.0%
3. First Year Retention	88.0%	89.0%	90.0%
4. Progression	65.0%	55.0%	55.0%

Show all

There's a 'Student Enrolment Summary' tab with updates:



And if you want to get into more details about Successful Course Completion, First Year Retention or Qualification Completion, scroll down the Contents list to find the 'Understanding...' tabs. Using filters you can then see a greater breakdown of the TEC information provided on those EPIs, including age groups.

