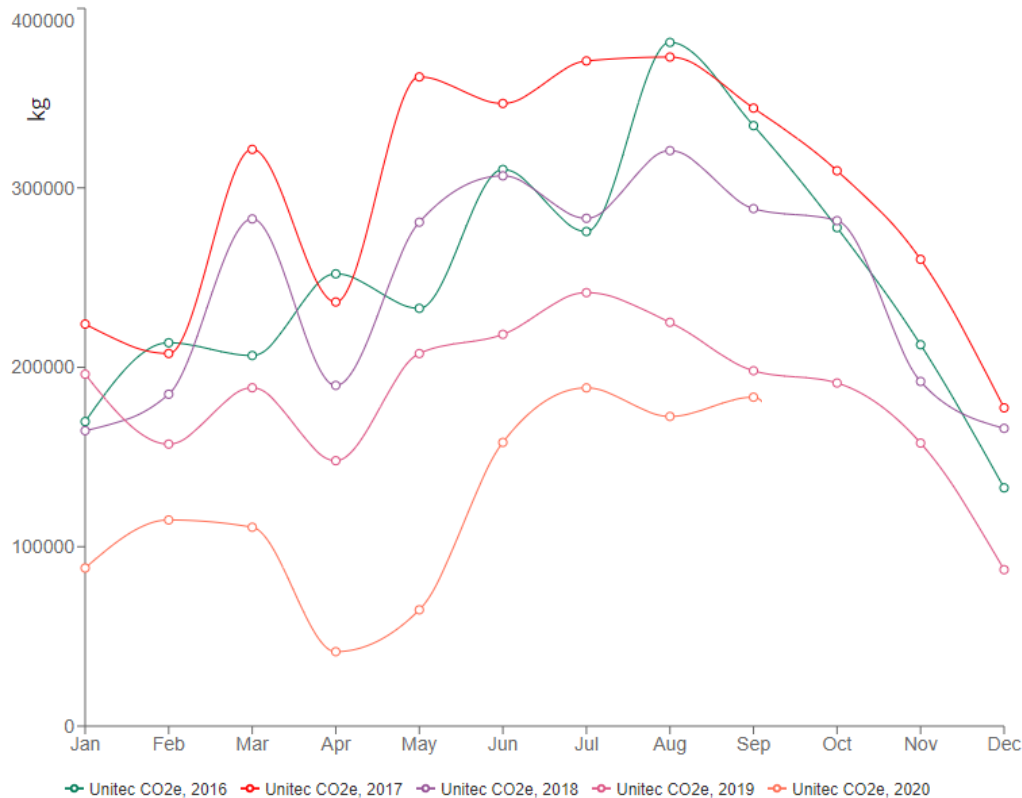


Environmental Footprint: Carbon

2020 Q3 Report



Trend insights

In Q3, our carbon footprint quickly caught up with last year's trend. This is due to:

- Waste totals which surpass 2019 Q3. Main reason for this was the final clear-out for the Architecture and Creative Industry moves (from B1 to B76 and B48) and preparation of B307 and B108 for construction.
- Higher natural gas use than this time last year due to B108 being back online, including Workshops and UPC requiring heating.
- One big paper order in July to make up for lack of orders throughout Q2

Electricity, fuel and shuttle peaks and troughs are as expected, and correlate with the COVID lockdown timeline and our staggered return to campus approach

Data for each individual carbon sources can be viewed on [One Planet website](#). Please use alternative browsers to Chrome.

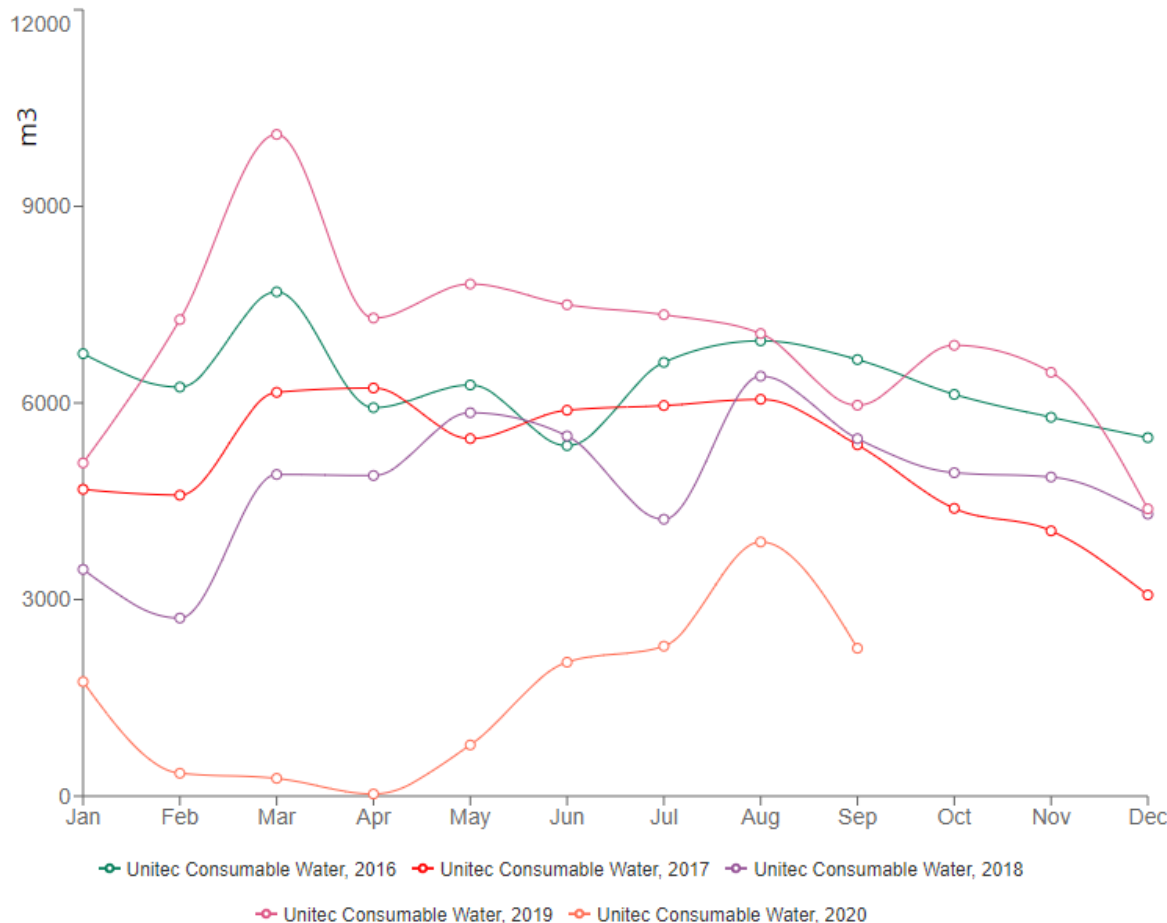


Environmental Footprint: Water

2020 Q3 Report

Trend Insights

- Our water use in 2020 continues to be lower when compared to all of the previous years. This is due to systemic improvements made and mentioned in Q1 report.
- The July spike is due to additional people on site post lockdown and a leak repair on Crown land.



What are we doing to reduce water use and to develop more sustainable options long term?

1. **Installed water tanks:** one for B111 garden, and one for Trades Plumbing Services so that during teaching, the water used gets recycled back into the system, instead of heading into the wastewater drain.
2. **Installing aerators on taps** as we upgrade kitchen and bathroom facilities and make our final moves to centralise our Mt Albert campus.
3. **Replacing urinals** in the teaching blocks with newer water-saving models, rather than the old style constant flushing facilities.

Wellbeing Lead Indicators

2020 Q3 Report



221
members

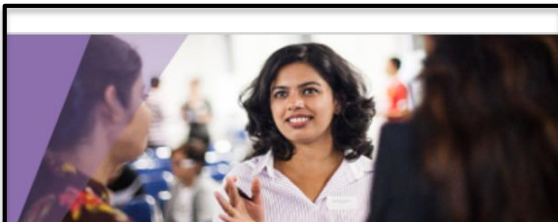


223
attendees

1,967
Views*

Support: 159
Academic: 64

** During COVID-19, the majority of the offerings remained online. However only 6 were live while the rest came in form of articles and videos to engage with in staff's own time. We were unable to monitor attendance but instead have recorded the number of views.*



24.2% staff
trained in mental health



322 staff with
Living Te Noho Kotahitanga badge



220 of formal and
informal staff events