



Student Performance Report 2019

May 2020
Te Korowai Kahurangi

Unitec

Report on student performance measures for the reporting year of 2019 based on TEC criteria (see last slide)

Successful Course Completion Rate in 2019 and Year Trends

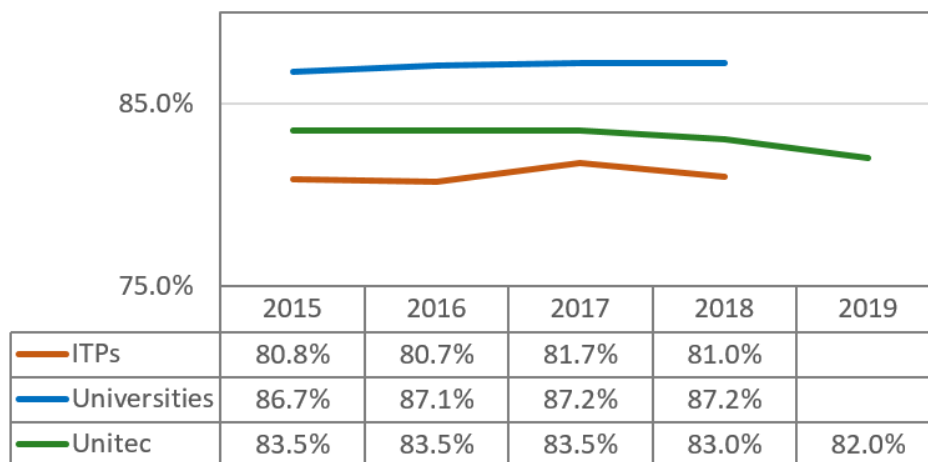
Successful Course Completion

82.0%

2022 Target: 85.0%, -3.0%

Unitec Targets	2019	2020	2021	2022
Successful Course Completion	82.0%	83.0%	84.0%	85.0%

Successful Course Completion Rate



- Based on data submitted in May 2020 to Ngā Kete, Unitec achieved 82% in 2019, successfully meeting the institutional target of set for 2019.
- For the period of 2015-2018, Unitec has been consistently above the ITP sector benchmarks by about 2% and below the University benchmarks by about 3%. The variance with the University sector is widening.

Cohort-based Qualification Completion Rate in 2019 and Year Trends

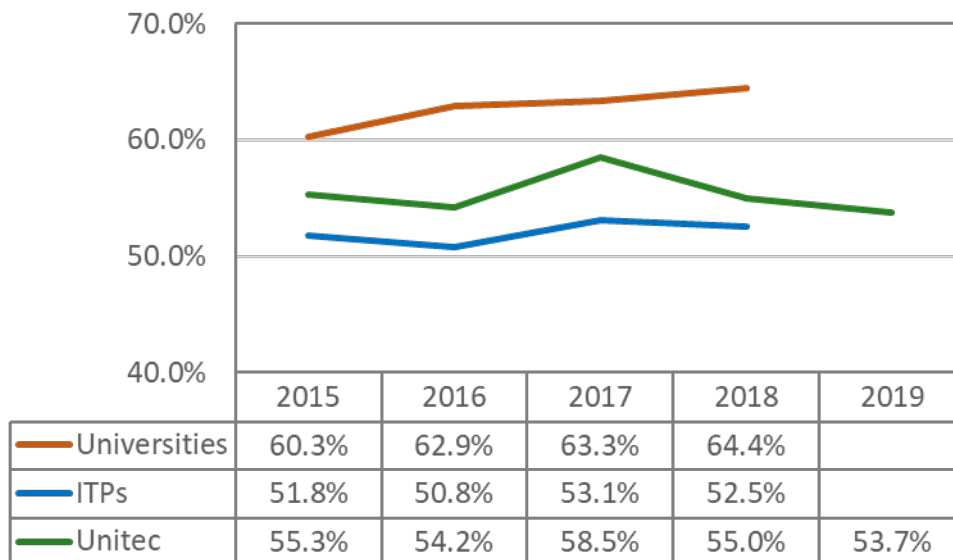
Qualification Completion

53.7%

2022 Target: 60.0%, -6.3%

Unitec Targets	2019	2020	2021	2022
Qualification Completion	55.0%	56.0%	58.0%	60.0%

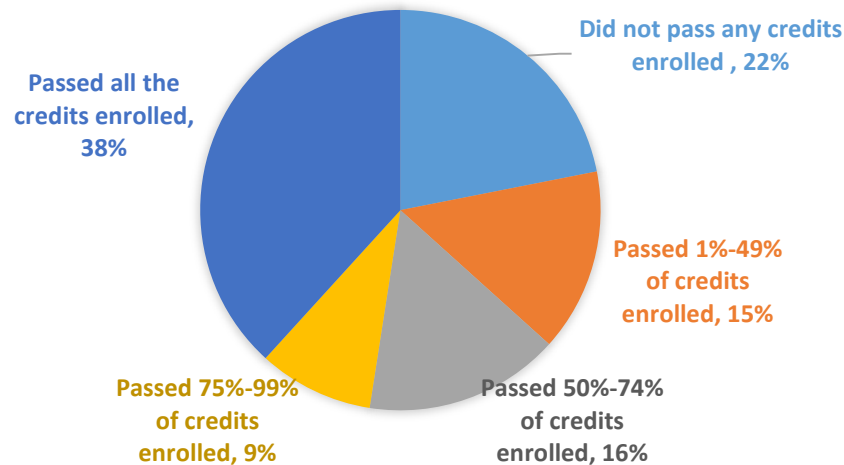
Cohort-based Qualification Completion Rates



- Based on the data submitted to Ngā Kete in May 2020, Unitec achieved a qualification completion rate of 53.7% which fell short of the institutional target of 55% for 2019.
- For the period of 2015-2019, while Unitec stays above the ITP sector, the gap is narrowing and its variance with the University sector has been rising noticeably.

High Successful Course Completion Rate and Low Qualification Completion Rate

DISTRIBUTION OF STUDENTS ACROSS DIFFERENT % OF CREDITS PASSED



Credits passed	Student count	% of total students
Did not pass any credits enrolled	784	22%
Passed 1%-49% of credits enrolled	529	15%
Passed 50%-74% of credits enrolled	565	16%
Passed 75%-99% of credits enrolled	333	9%
Passed all the credits enrolled	1369	38%
Total	3580	100%

1. An analysis of non-completions for the Reporting Year of 2019 indicated that 38% of the students (or 1369 students) with a non-completion status passed all the courses they were enrolled in.

- These students completed and passed all the enrolled courses but did not pursue their qualification for reasons other than failed grades.
- These students did not move on to other qualifications of the same level within the cohort period (definition on the last slide).

2. Nearly half (or 47%) of the students who gave up pursuing their qualifications managed to pass at least 75% of the credits they were enrolled in, but still gave up on their qualifications.

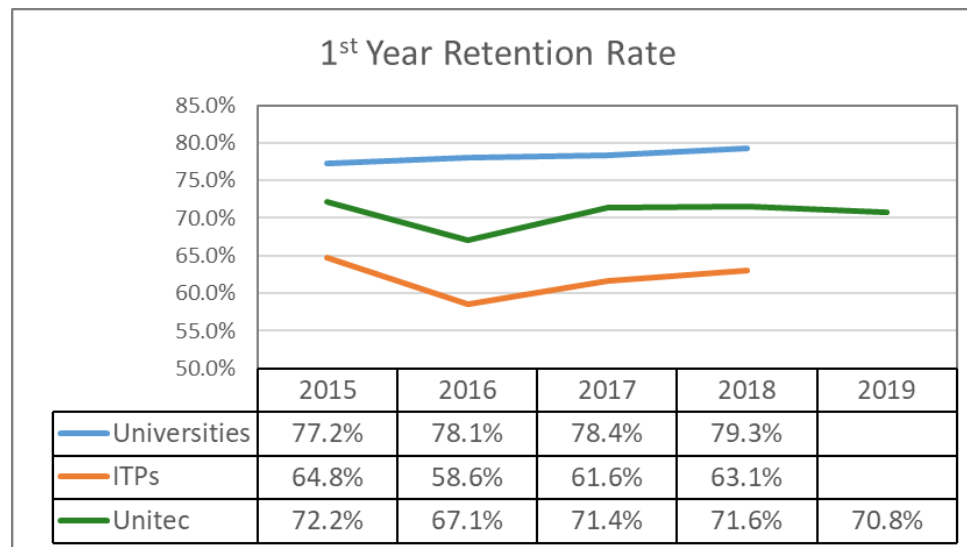
First Year Retention Rate in 2019 and Year Trends

1st Year Retention

70.8%

2022 Target: 75.0%, -4.2%

Unitec Targets	2019	2020	2021	2022
First Year Retention	72.0%	73.0%	74.0%	75.0%



- The First Year Retention Rate dropped by 0.8% from 2018 to 70.8% in 2019, falling short of the institutional target for 2019 by 1.2%.
- In 2015-2019, while Unitec stayed well above the ITP sector benchmark in the range of 7-9%, its variance with the University sector increased from 5% in 2015 to 7.7% in 2019.

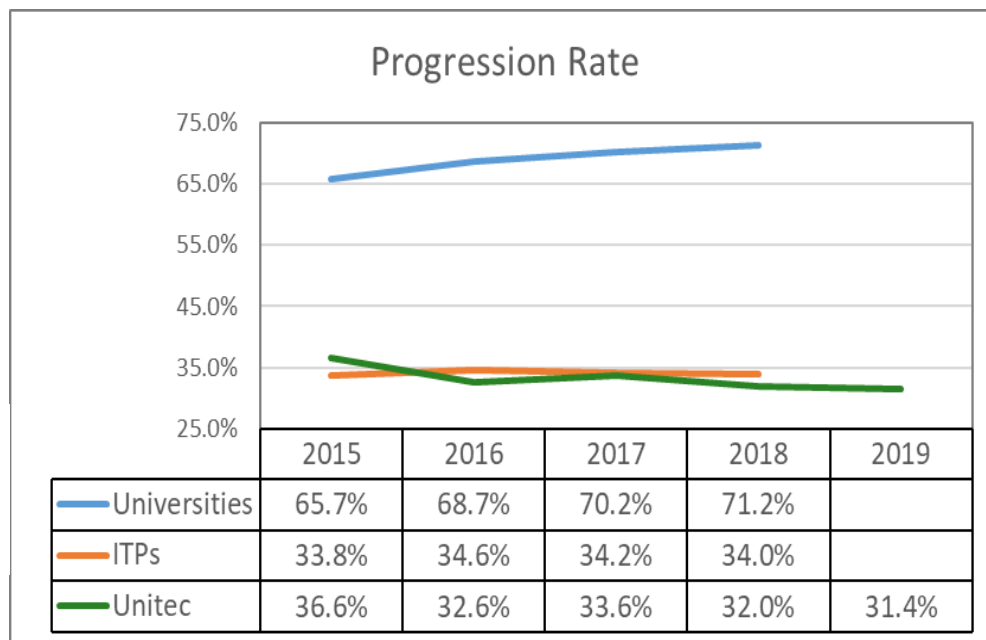
Progression Rate in 2019 and Year Trends

Progression (from Level
1-4 to higher)

31.4%

2022 Target: 34.0%, -2.6%

Unitec Targets	2019	2020	2021	2022
Progression	30.5%	31.0%	31.5%	32.0%

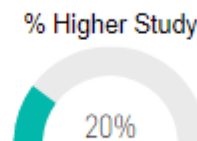
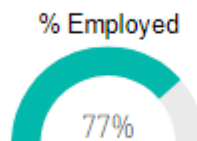
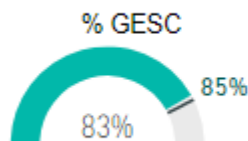


- Unitec achieved 31.4% in Level 1-4 Progression Rate in 2019, successfully meeting the institutional target of 30.5% for 2019.
- Except for 2015, Unitec consistently stayed below the ITP sector benchmark by 1-2% and was well below the University benchmark which has been rising over the years.

Unitec Graduate Outcomes

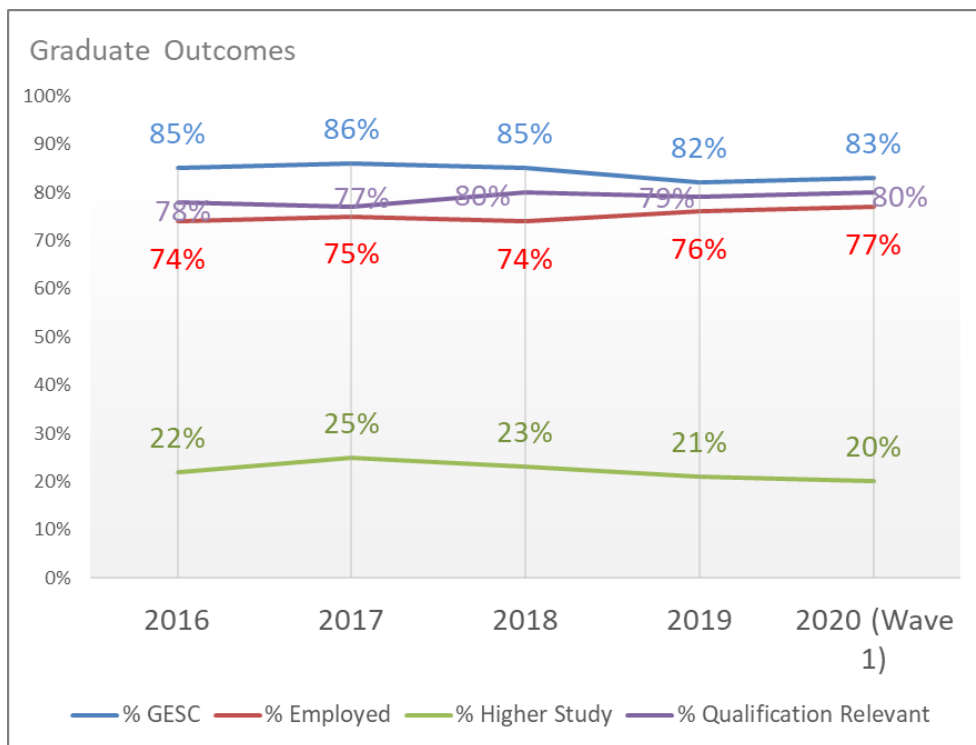
2020 Wave 1

(This wave is for graduates who completed qualifications in Semester 1, 2019)



Unitec Targets	2019	2020	2021	2022
Employment/Further Study	85.0%	85.0%	85.0%	85.0%

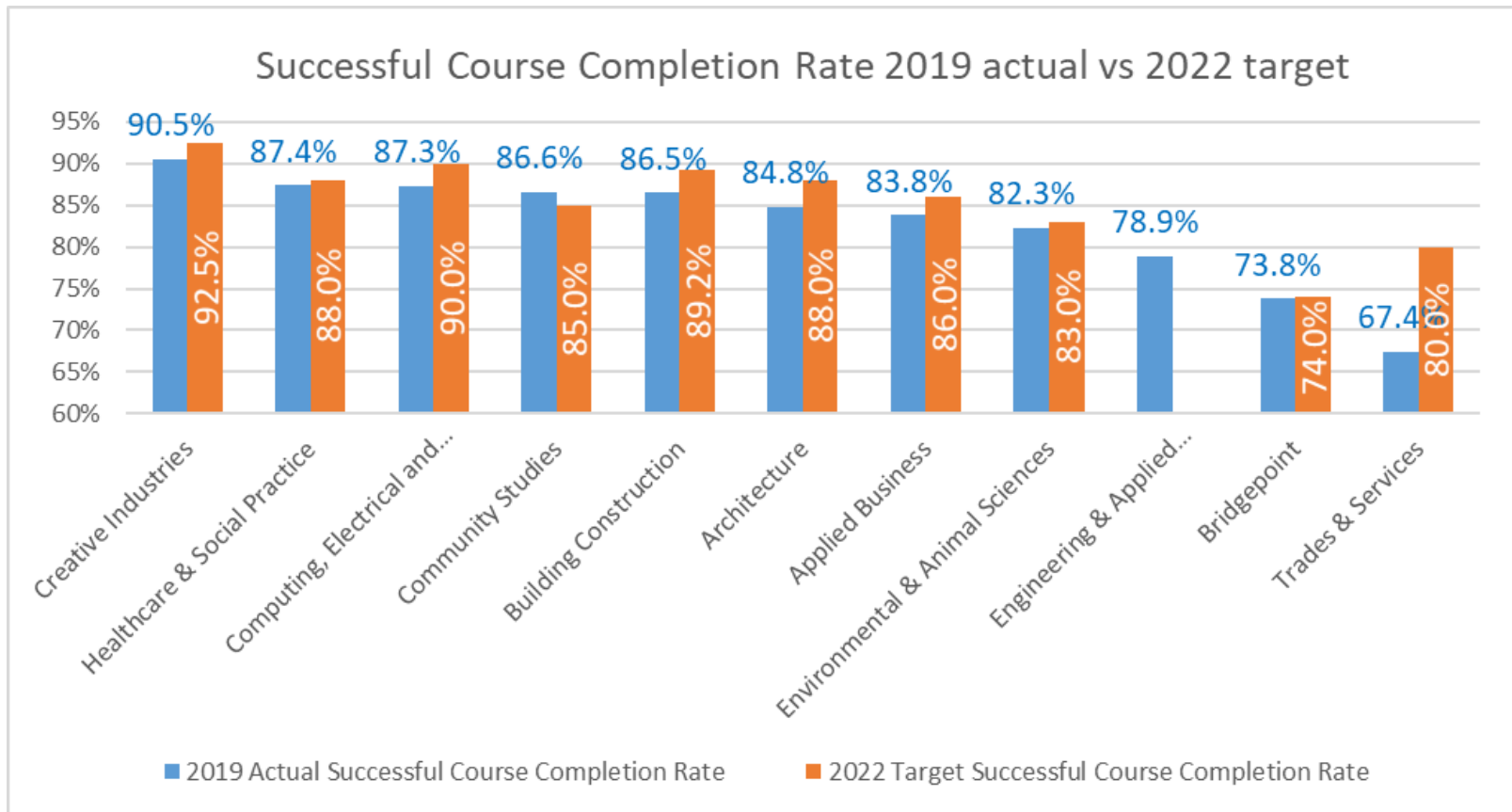
2019		
1306 Received	3551 Sample Size	36.8% Response Rate
2020		
472 Received	1337 Sample Size	35.3% Response Rate



- While % Higher Study has shown a decreasing trend since 2017, the % employed fluctuated slightly between 74% and 77% in the 5-year period.
- This combined to generate a similar pattern in % GESC (% of graduates in employment or further study) – slightly downward trend since 2017, bouncing back by 1% from 2018 to 2019 fuelled by a 1% increase in % employed.
- The % GESC is yet to meet the institutional target, pending results from the second wave.

Schools

Successful Course Completion Rate by School – 2019 Actual vs 2022 Target

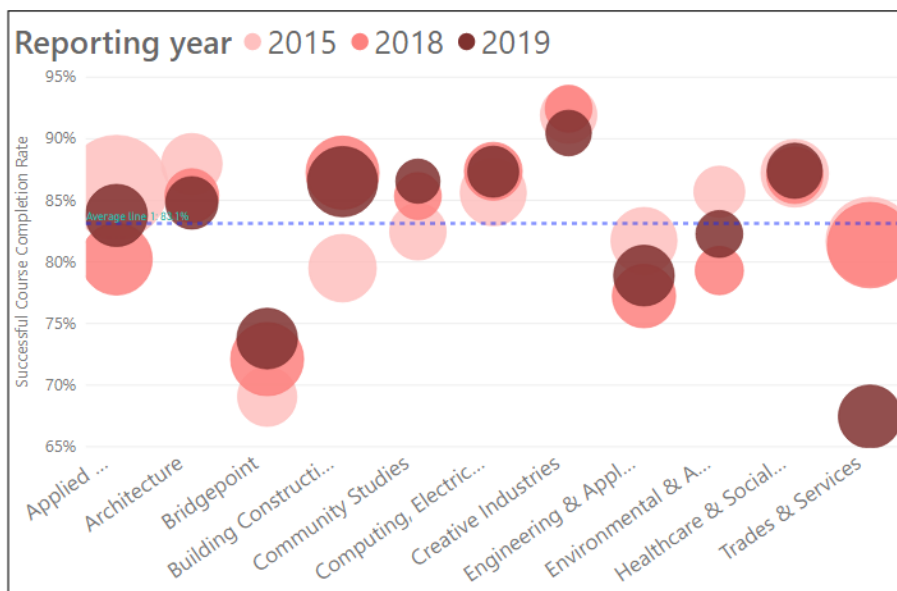


Note: Throughout the report, the school name **Computing & Information Technology** is used while in all the graphs it is replaced by its new name **Computing, Electrical & Applied Technology** due to graphing limitations. They both refer to the same school.

Year Trends - Successful Course Completion Rate by School

All colour coding is based off the 2022 institutional targets

>10% below target
0-10% below target
0-10% above target
>10% above target

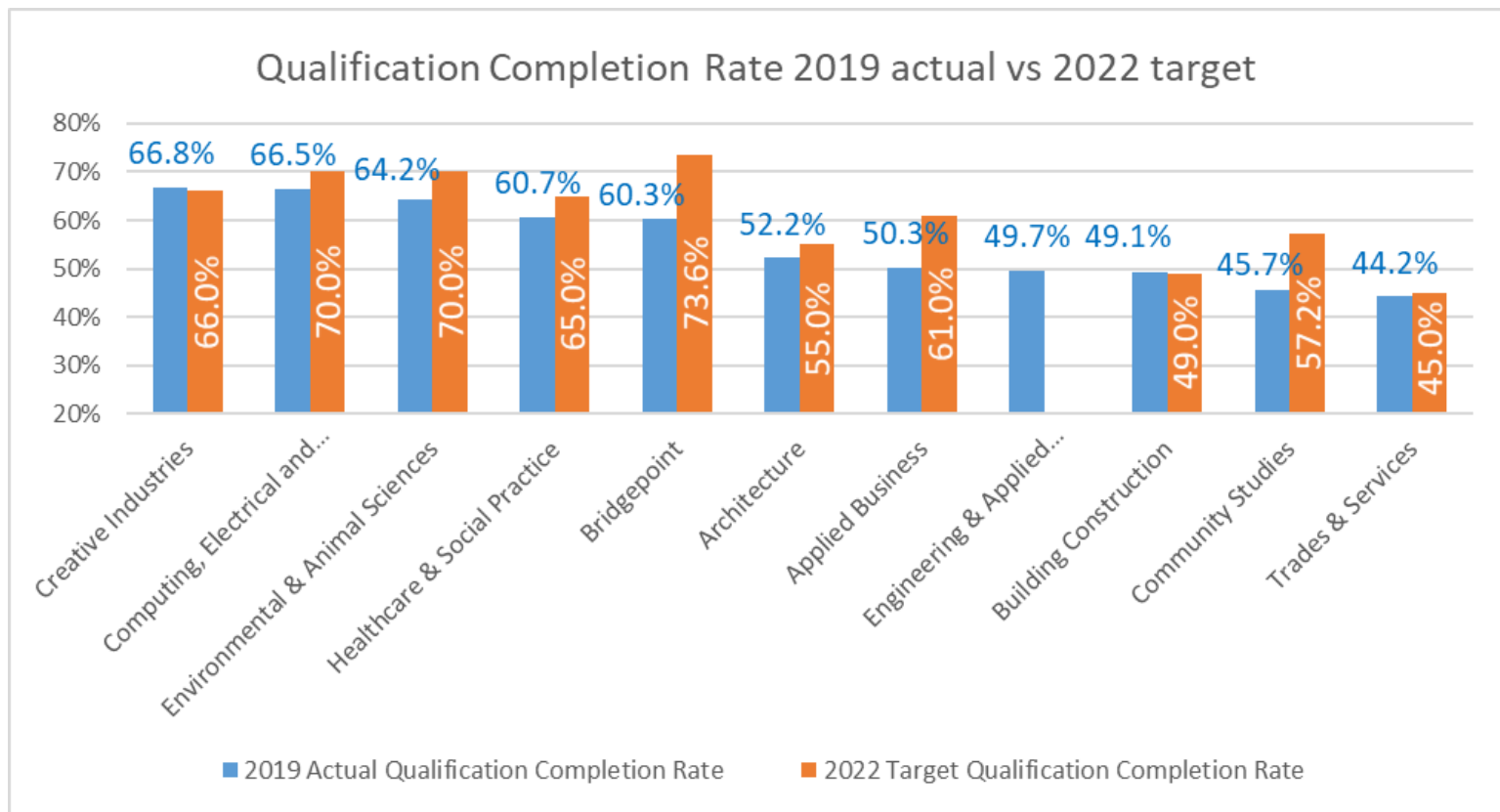


Circles are Successful Course Completion Rates;
Size of a circle reflects the number of students

School	2015	2016	2017	2018	2019	Grand Total	Headcount for Reporting year 2019
Applied Business	86.1%	86.2%	84.6%	80.2%	83.8%	84.7%	908
Architecture	88.0%	83.5%	84.9%	85.4%	84.8%	85.4%	600
Bridgepoint	69.1%	75.8%	74.1%	72.1%	73.8%	72.9%	866
Building Construction	79.5%	82.9%	84.9%	87.2%	86.5%	84.4%	1233
Community Studies	82.5%	83.7%	85.9%	85.3%	86.6%	84.4%	350
Computing, Electrical and Applied Technology	85.6%	84.8%	87.6%	87.4%	87.3%	86.4%	539
Creative Industries	91.9%	91.5%	91.0%	92.4%	90.5%	91.5%	394
Engineering & Applied Technology	81.7%	80.0%	79.8%	77.2%	78.9%	79.6%	871
Environmental & Animal Sciences	85.7%	84.6%	81.5%	79.3%	82.3%	82.8%	445
Healthcare & Social Practice	87.2%	86.5%	85.6%	87.0%	87.4%	86.8%	695
Trades & Services	81.7%	81.6%	78.9%	81.4%	67.4%	79.0%	982
Grand Total	84.0%	84.0%	83.2%	82.7%	82.0%	83.3%	7768

- In both the 2-year and 5-year periods, Trades & Services saw a huge drop of about 15%. The impact on the institute rate was mitigated by the significant reduction in student size. Bridgepoint, the second lowest performer, stayed well below the institute target of 85%.
- Creative Industries dropped slightly but together with Healthcare & Social Practice and Computing & Information Technology have remained high performers with stable performance throughout.
- Building Construction started low in 2015 like Engineering & Applied Technology but had successively improved to an above target performance while the latter went down to below average performance.

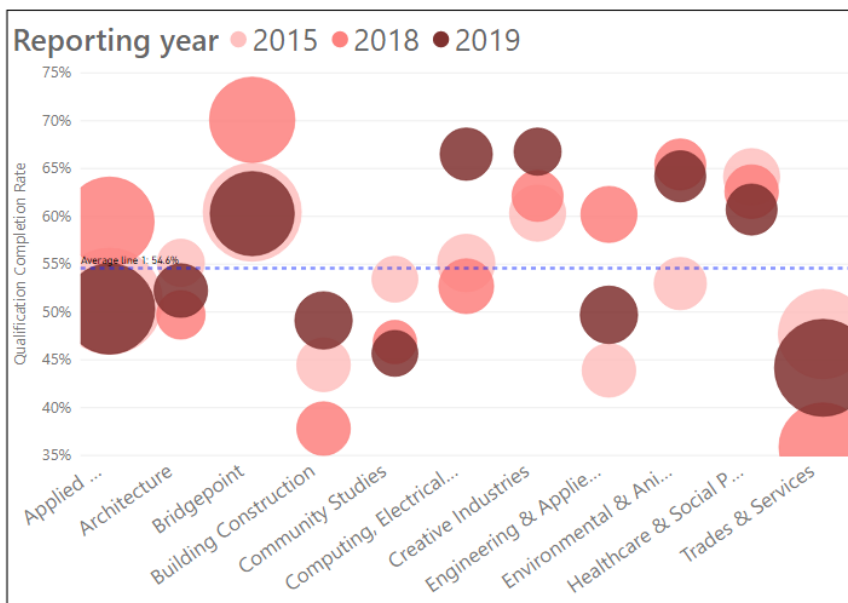
Cohort-based Qualification Completion Rate by School – 2019 Actual vs 2022 Target



Year trends – Qualification Completion Rate by School

All colour coding is based off the 2022 institutional targets

>10% below target
0-10% below target
0-10% above target
>10% above target

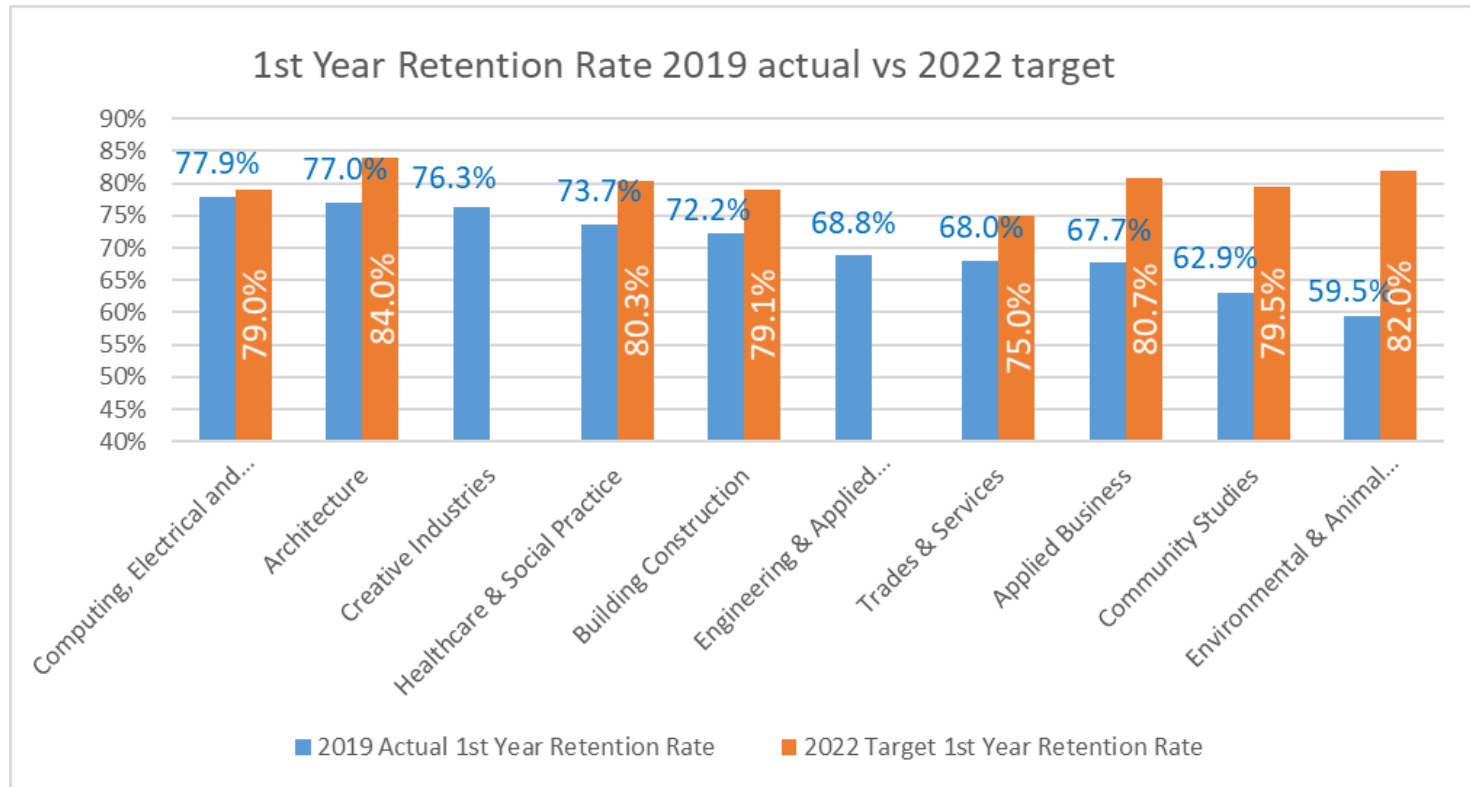


Circles are Qualification Completion Rates;
Size of a circle reflects the number of students

School	2015	2016	2017	2018	2019	Headcount for Reporting Year 2019	
						Grand Total	Year 2019
Applied Business	51.1%	54.2%	64.8%	59.4%	50.3%	55.7%	1517
Architecture	55.1%	48.0%	47.0%	49.7%	52.2%	50.3%	446
Bridgepoint	60.4%	58.3%	66.4%	70.1%	60.3%	62.4%	1288
Building Construction	44.5%	39.5%	41.4%	37.8%	49.1%	42.6%	510
Community Studies	53.4%	56.8%	48.2%	46.9%	45.7%	50.5%	289
Computing & Information Technology	55.1%	52.5%	58.1%	52.7%	66.5%	56.7%	423
Creative Industries	60.3%	57.7%	67.3%	62.1%	66.8%	62.4%	316
Engineering & Applied Technology	43.9%	50.3%	61.6%	60.2%	49.7%	53.0%	511
Environmental & Animal Sciences	53.0%	62.3%	65.8%	65.4%	64.2%	62.0%	390
Healthcare & Social Practice	64.2%	58.2%	64.1%	62.6%	60.7%	62.1%	392
Trades & Services	47.7%	45.0%	44.3%	35.9%	44.2%	43.5%	1790
Grand Total	53.6%	53.0%	57.0%	54.9%	53.1%	54.2%	7824

- Trades and Services that has the largest student size over the years is the lowest performer despite a rise of 8.3% from 2018 to 2019. Second in student size is Applied Business which also has lower than average performance.
- Engineering and Applied Technology saw the biggest drop by 10.5% from 2018 to 2019. Community Studies has steadily dropped over the 5-year period.
- Computing and Information Technology saw the largest increase in 2015-2019, and Creative Industries the top performer also saw increases in both the 2-year and 5-year periods, their impact is, however, lessened by a relatively small student size.
- Bridgepoint has above average performance, and with its large student size, helps to buttress the downward pressure on the institute rate. It has, however, dropped 9.8% from 2018 to 2019.

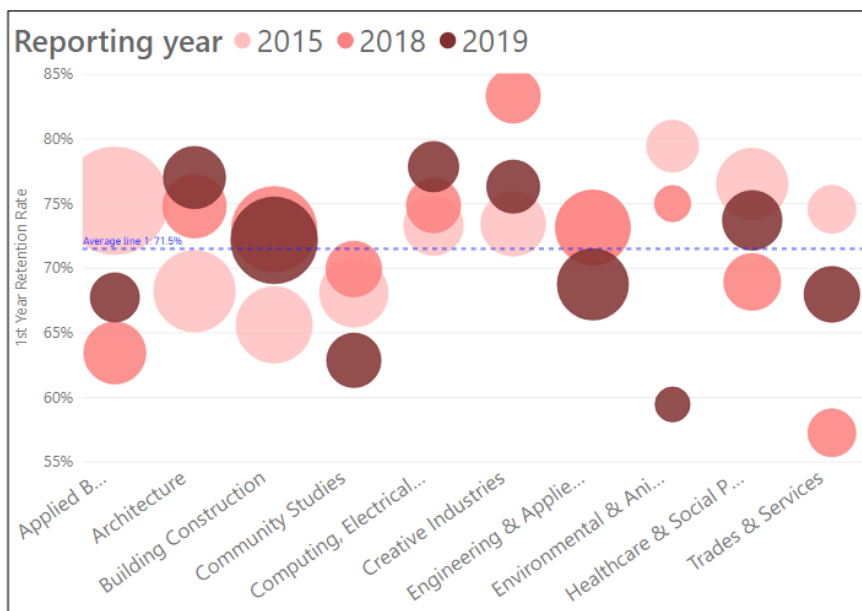
First Year Retention Rate by School – 2019 Actual vs 2022 Target



Year Trends – First Year Retention Rate by School

All colour coding is based off the 2022 institutional targets

>10% below target
 0-10% below target
 0-10% above target
 >10% above target



Circles are 1st Year Retention Rates;
Size of a circle reflects the number of students

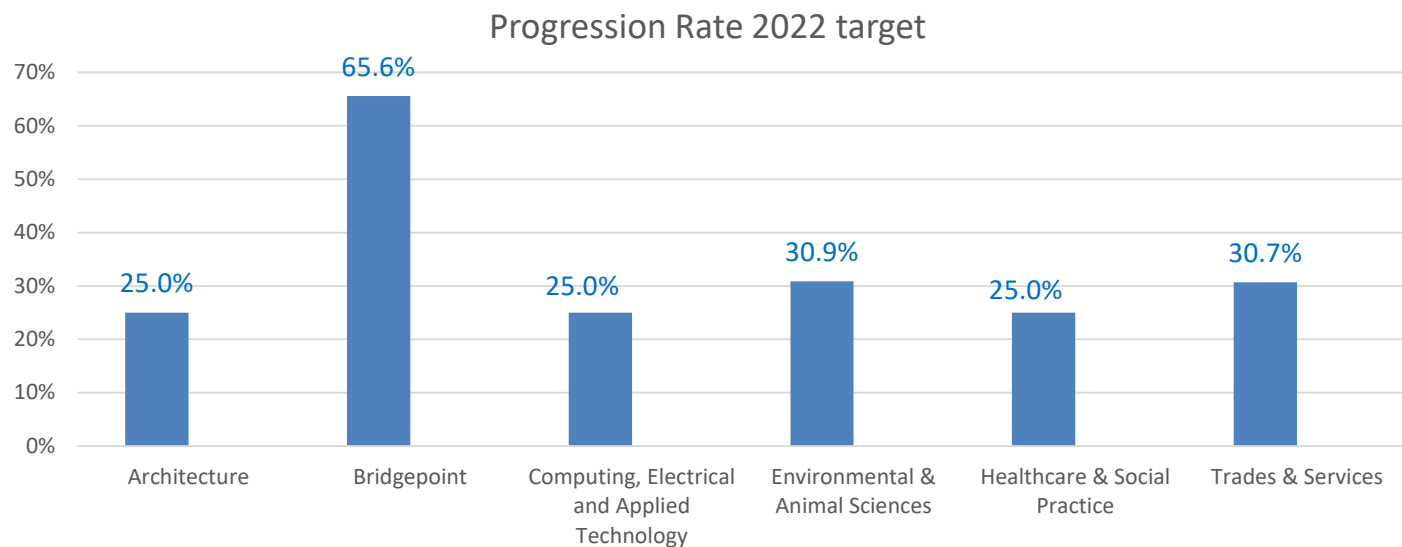
**Bridgepoint is excluded to prevent its extreme figures skewing the graph.*

School	2015	2016	2017	2018	2019	Grand Total	Headcount for Reporting year 2019
Applied Business	75.2%	68.8%	78.2%	63.4%	67.7%	72.3%	124
Architecture	68.2%	61.6%	75.7%	74.8%	77.0%	70.5%	235
Bridgepoint	64.3%	71.4%	91.7%	100.0%	0.0%	66.7%	5
Building Construction	65.6%	64.8%	73.3%	73.0%	72.2%	70.1%	510
Community Studies	68.1%	64.7%	57.9%	69.9%	62.9%	64.9%	167
Computing & Information Technology	73.3%	72.2%	72.9%	74.9%	77.9%	73.9%	131
Creative Industries	73.4%	79.5%	70.3%	83.3%	76.3%	76.4%	152
Engineering & Applied Technology	73.2%	71.4%	64.6%	73.2%	68.8%	70.3%	320
Environmental & Animal Sciences	79.5%	60.0%	62.5%	75.0%	59.5%	68.9%	37
Healthcare & Social Practice	76.5%	71.7%	78.4%	68.9%	73.7%	74.2%	213
Trades & Services	74.6%	44.1%	63.4%	57.3%	68.0%	60.9%	178
Grand Total	72.3%	67.1%	71.5%	71.7%	71.2%	70.6%	2063

2018-2019 – Trades & Services and Computing & Information Technology and Healthcare & Social Practice are the schools that saw an encouraging increase. Of the three, Trades & Services saw the largest increase from but still stayed below average. The combined effect, however, was offset by decreases in other schools, particularly Environmental & Animal Sciences with a huge drop of 15.5%, and Engineering & Applied Technology and Building Construction which had the largest student size.

2015-2019 – Building Construction saw a healthy increase and given its larger student size, had a favourable impact on the overall rate. Schools with a small student size like Creative Industries, Architecture and Computing & Information Technology performed better than large players like Engineering & Applied Technology and Trades & Services. Environmental & Animal Sciences again experienced the biggest drop from 2015 to 2019 and fluctuated the greatest during the 5-year period.

Progression Rate by School – 2022 Target



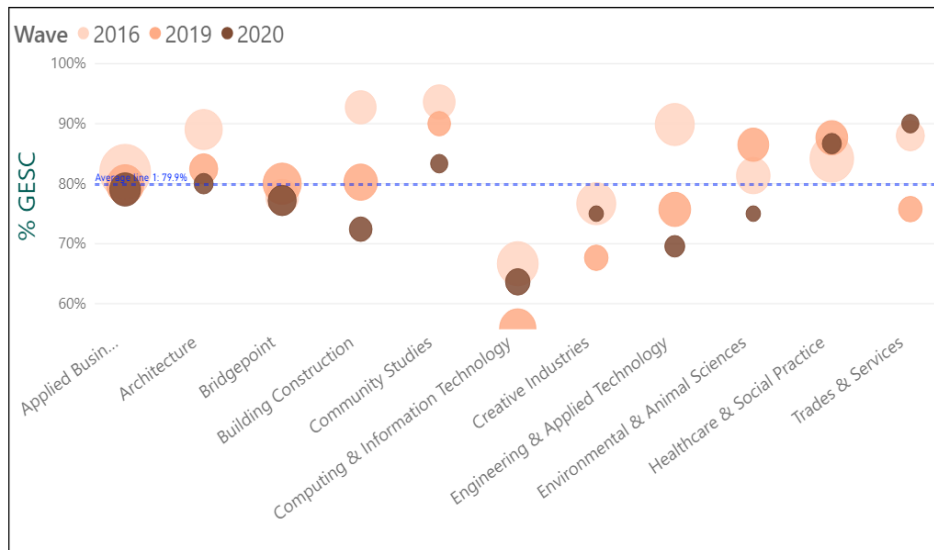
Only targets are being shown here, as progression rate at the school level is not available.

Graduate Survey Response rates by school

The Unitec graduate survey is run twice every year, consisting of waves 1 and 2 and targeting Semester 1 and 2 graduates respectively. The 2020 waves are for 2019 graduates and the 2019 waves are for 2018 graduates.

	2020 Wave 1 only			2019 Waves 1 & 2		
Wave	2020			2019		
School Name	Received	Sent	Response Rate	Received	Sent	Response Rate
Mindlab	150	317	47.3%	403	905	44.5%
Applied Business	81	247	32.8%	131	436	30.0%
Bridgepoint	65	195	33.3%	124	318	39.0%
Computing & Information Technology	42	119	35.3%	114	335	34.0%
Building Construction	35	149	23.5%	95	322	29.5%
Engineering & Applied Technology	24	82	29.3%	85	193	44.0%
Architecture	19	47	40.4%	82	207	39.6%
Healthcare & Social Practice	18	44	40.9%	80	223	35.9%
Community Studies	12	36	33.3%	65	194	33.5%
Trades & Services	12	58	20.7%	38	103	36.9%
Creative Industries	5	20	25.0%	38	181	21.0%
Environmental & Animal Sciences	5	14	35.7%	35	102	34.3%
Te Puna Ako	4	9	44.4%	16	32	50.0%
Total	472	1337	35.3%	1306	3551	36.8%

Year trends - % GESC by school



2019-2020

- Computing and Information Technology with its relatively large student size and the lowest % GESC of all schools is a low performer despite a 7.7% increase.
- Trades and Services has shown the biggest increase but its relatively small size does not impact significantly on the overall rate.

2016-2020

- % GESC for all schools dropped except for Healthcare & Social Practice and Trades & Services but both schools have a relatively insignificant student size compared with Applied Business and Bridgepoint which have the largest impact on the overall Unitec rate but their % GESC have slightly decreased.

School	2016	2017	2018	2019	2020	2016-2020 variance	2019-2020 variance
Applied Business	82.0%	83.0%	86.8%	79.8%	79.0%	-3.0%	-0.8%
Architecture	89.0%	80.9%	82.1%	82.5%	80.0%	-9.0%	-2.5%
Bridgepoint	77.8%	85.7%	79.2%	80.0%	77.2%	-0.6%	-2.8%
Building Construction	92.7%	90.7%	80.0%	80.2%	72.4%	-20.3%	-7.8%
Community Studies	93.6%	88.0%	93.6%	90.0%	83.3%	-10.3%	-6.7%
Computing & Information Technology	66.7%	67.1%	62.4%	55.9%	63.6%	-3.1%	7.7%
Creative Industries	76.7%	80.4%	78.3%	67.6%	75.0%	-1.7%	7.4%
Engineering & Applied Technology	89.9%	85.7%	78.1%	75.7%	69.6%	-20.3%	-6.1%
Environmental & Animal Sciences	81.3%	92.9%	87.1%	86.5%	75.0%	-6.3%	-11.5%
Healthcare & Social Practice	84.2%	84.3%	91.0%	87.7%	86.7%	2.5%	-1.0%
Trades & Services	88.0%	84.4%	86.7%	75.8%	90.0%	2.0%	14.2%
Grand Total	84.7%	86.2%	84.5%	82.4%	83.3%	-1.4%	0.9%

Māori

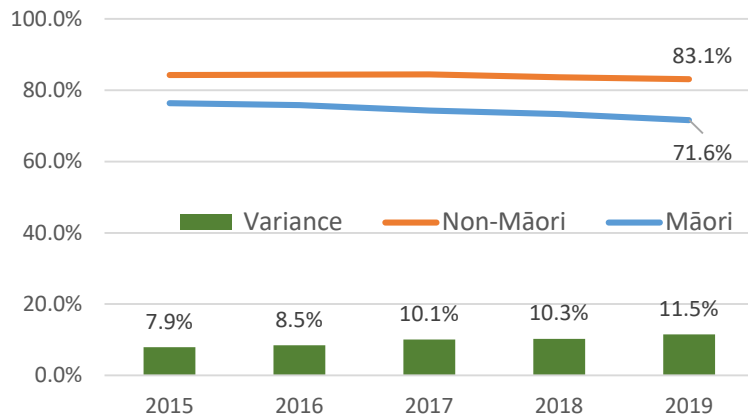
Māori Successful Course Completion Rate

Successful Course Completion

71.6%

2022 Target: 85.0%, -13.4%

Successful Course Completion Rate
- Māori

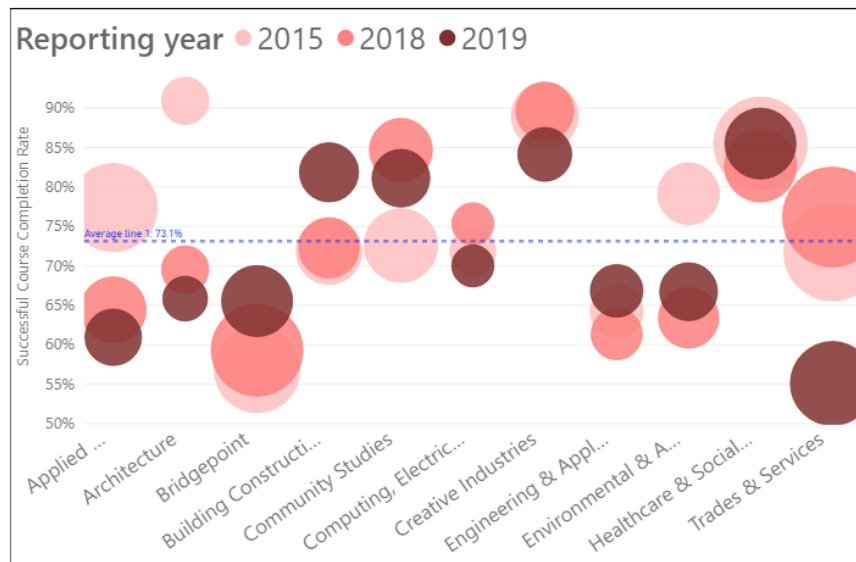


2018 SCC Benchmarks	Māori	Non-Māori	Variance
Unitec	73.3%	83.6%	10.3%
MIT	73.4%	81.7%	8.3%
AUT	81.2%	85.2%	4.0%
University of Auckland	85.3%	89.4%	4.1%
ITP Sector	71.8%	82.5%	10.7%

- The variance between Māori and non-Māori Course Completion Rate has a worrying upward trend over the 5-year period.
- While Unitec was above the ITP sector in 2018, it has the lowest Course Completion Rate compared with its key counterparts in Auckland.

Maori Successful Course Completion by School and Year Trends

- Healthcare & Social Practice is the top performer throughout the years. Building Construction showed a favourable upward trend with the biggest jump of all the schools from 2018.
- Trades & Services experienced the biggest drop in 2018 - 2019. As it has the largest student size of all schools, it has consistently exerted a downward pull on the overall Māori Course Completion Rate.
- Both Architecture and Applied Business saw a continuous drop over the 5-year period but did not impact significantly on the overall rate given their relatively smaller student size especially in 2019.
- Bridgepoint started low in 2015 and since then has continuously edged up, but given its lower than average Course Completion Rates and its relatively large student size, it remained a negative impact on the overall Maori performance.



*Student Headcount (Distinct) for the 2019 Reporting Year for SCC; EFTS are total regardless of measures

School	2015	2016	2017	2018	2019	5-year variance	2018-2019 variance	Student Headcount	EFTS
Applied Business	77.4%	76.6%	73.2%	64.5%	61.0%	-16.4%	-3.5%	59	27.1
Architecture	90.9%	74.0%	72.4%	69.5%	65.9%	-25.0%	-3.6%	31	27.1
Bridgepoint	56.8%	60.8%	65.3%	59.3%	65.5%	8.7%	6.2%	106	55.7
Building Construction	71.8%	77.0%	81.8%	72.3%	81.9%	10.1%	9.6%	68	41.2
Community Studies	72.6%	82.5%	80.5%	84.7%	81.1%	8.5%	-3.6%	64	48.9
Computing & Information Technology	71.8%	61.7%	75.5%	75.3%	70.0%	-1.8%	-5.3%	25	17.6
Creative Industries	89.0%	89.0%	82.7%	89.7%	84.1%	-4.9%	-5.6%	53	50.9
Engineering & Applied Technology	64.2%	65.1%	64.8%	61.4%	66.8%	2.6%	5.4%	49	31.7
Environmental & Animal Sciences	79.1%	80.7%	69.0%	63.4%	66.7%	-12.4%	3.3%	65	46.0
Healthcare & Social Practice	85.5%	84.4%	83.1%	82.7%	85.5%	0.0%	2.8%	102	80.3
Trades & Services	71.7%	69.7%	65.8%	76.2%	55.1%	-16.6%	-21.1%	153	95.4
Grand Total	76.2%	76.4%	74.4%	73.6%	71.4%	-4.8%	-2.2%	769	522.0

Māori Qualification Completion Rate

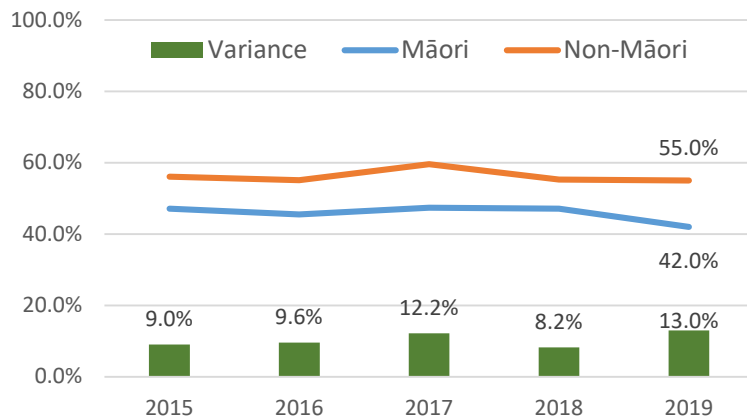
Qualification Completion

42.0%

2022 Target: 60.0%, -18.0%

- Unitec had the lowest Qualification Completion Rate compared with its key counterparts in Auckland and the ITP sector.
- The gap between the Māori and non-Māori Qualification Completion Rates stood at 13% in 2019, the greatest of all years in the 5-year period.

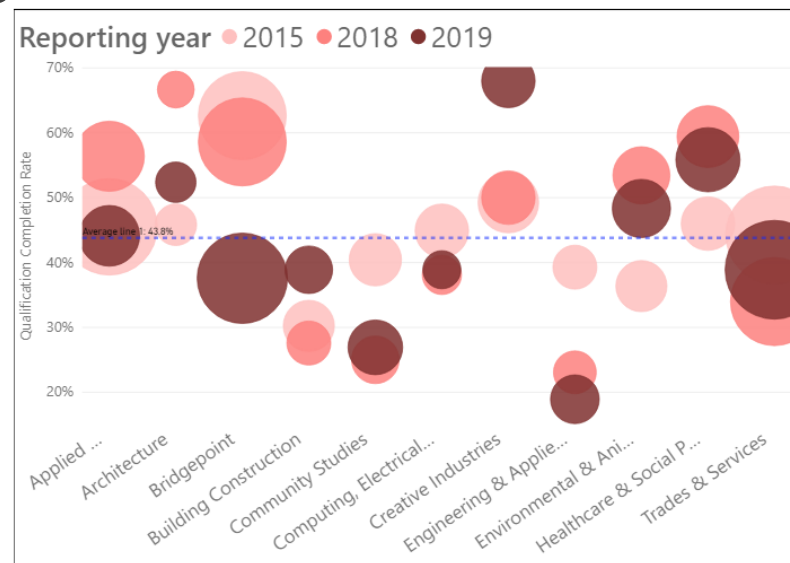
Qualification Completion Rate - Māori



2018 QC Benchmarks	Māori	Non-Māori	Variance
Unitec	47.1%	55.3%	8.2%
MIT	49.0%	54.3%	5.3%
AUT	53.1%	64.5%	11.4%
University of Auckland	59.2%	71.0%	11.8%
ITP Sector	49.3%	53.1%	3.8%

Maori Qualification Completion Rate by school and Year Trends

- Creative Industries led other schools with the highest Qualification Completion rate and increase over both the 2-year and 5-year periods.
- The overall Māori rate has however been negatively impacted by schools with a lower than average qualification rate and large student size such as Trades & Services and Bridgepoint. Bridgepoint in particular saw a drop of over 20% in both the 2-year and 5-year periods.
- Building Construction showed a favourable increase over the 5 years but still its Qualification Completion Rate remained below average.



*Student Headcount (Distinct) for the 2019 Reporting Year for QC; EFTS are total regardless of measures

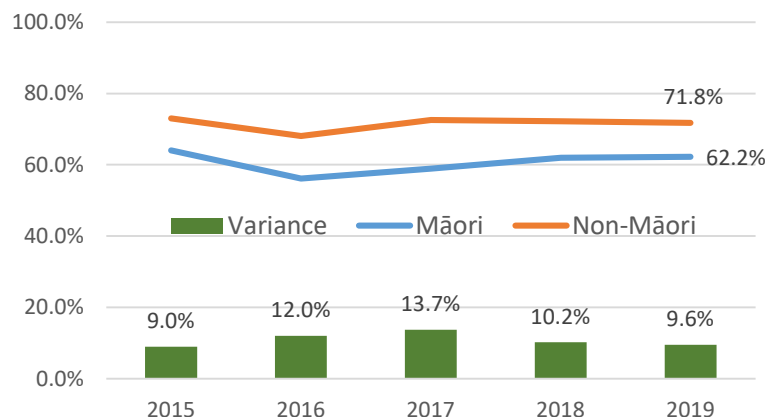
School	2015	2016	2017	2018	2019	5-year variance	2018-2019 variance	Student Headcount	EFTS
Applied Business	45.5%	48.0%	54.9%	56.4%	44.1%	-1.4%	-12.3%	68	27.1
Architecture	45.8%	52.6%	52.2%	66.7%	52.4%	6.6%	-14.3%	21	27.1
Bridgepoint	62.7%	55.8%	60.1%	58.6%	37.6%	-25.1%	-21.0%	165	55.7
Building Construction	30.2%	26.1%	26.9%	27.6%	38.9%	8.7%	11.3%	36	41.2
Community Studies	40.4%	43.3%	37.8%	25.0%	26.9%	-13.5%	1.9%	52	48.9
Computing & Information Technology	44.9%	28.6%	35.0%	38.1%	38.9%	-6.0%	0.8%	18	17.6
Creative Industries	49.3%	47.9%	54.8%	50.0%	68.0%	18.7%	18.0%	50	50.9
Engineering & Applied Technology	39.3%	43.5%	30.0%	23.1%	18.9%	-20.4%	-4.2%	37	31.7
Environmental & Animal Sciences	36.4%	51.4%	56.5%	53.4%	48.3%	11.9%	-5.1%	59	46.0
Healthcare & Social Practice	46.0%	51.6%	56.7%	59.4%	55.8%	9.8%	-3.6%	77	80.3
Trades & Services	44.3%	36.2%	33.3%	34.0%	38.9%	-5.4%	4.9%	197	95.4
Grand Total	47.1%	45.3%	47.5%	47.2%	41.9%	-5.2%	-5.3%	778	522.0

Māori First Year Retention Rate

1st Year Retention
62.2%
2022 Target: 75.0%, -12.8%

- In 2019, the Maori First Year Retention Rate slightly improved to narrow the gap between Māori and non-Māori performance.
- Unitec was still well below its key counterparts in Auckland in 2018, although it stayed above the ITP sector benchmark.

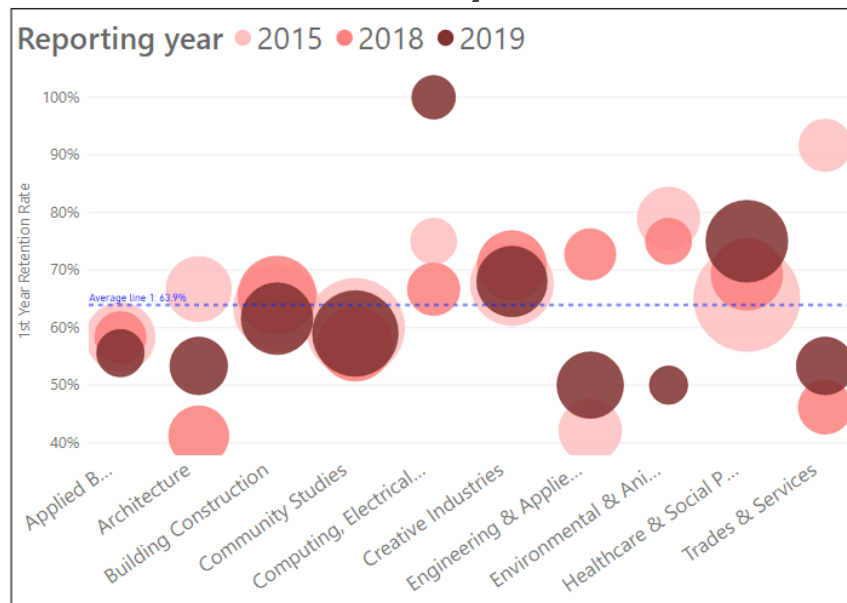
First Year Retention Rate
- Māori



2018 FYR Benchmarks	Māori	Non-Māori	Variance
Unitec	62.0%	72.2%	10.2%
MIT	67.1%	68.6%	1.5%
AUT	75.7%	79.4%	3.7%
University of Auckland	78.0%	83.8%	5.8%
ITP Sector	56.2%	63.9%	7.7%

Māori First Year Retention Rate by school and Year Trends

- In 2019, Computing & Information Technology secured the greatest increase in both the 2-year and 5-year periods to 100%.
- The largest drop over the 5-year period is Trades & Services, impacting on the overall Maori results, although the school improved by 7.1% in 2019 from 2018.
- Healthcare & Social Practice kept up its momentum throughout to become a high performer in 2019 with the second largest student size.
- Of concern are Environmental and Animal Sciences and Engineering & Applied Technology showing a noticeably large downturn of 25% and 22.7% respectively.



*Bridgepoint is not included in the graph due to its huge fluctuations in 2015-2019 to avoid skewing the visual effect.

*Student Headcount (Distinct) for the 2019 Reporting Year for FYR; EFTS are total regardless of measures

School	2015	2016	2017	2018	2019	5-year variance	2018-2019 variance	Student Headcount	EFTS
Applied Business	58.3%	46.9%	50.0%	58.3%	55.6%	-2.7%	-2.7%	9	27.1
Architecture	66.7%	81.3%	47.8%	41.2%	53.3%	-13.4%	12.1%	15	27.1
Bridgepoint	100.0%	NA	NA	NA	NA	NA	NA		55.7
Building Construction	63.4%	46.7%	61.8%	65.6%	61.5%	-1.9%	-4.1%	26	41.2
Community Studies	60.0%	57.4%	62.2%	57.1%	59.0%	-1.0%	1.9%	39	48.9
Computing & Information Technology	75.0%	50.0%	55.6%	66.7%	100.0%	25.0%	33.3%	7	17.6
Creative Industries	67.6%	88.5%	72.0%	70.8%	68.0%	0.4%	-2.8%	25	50.9
Engineering & Applied Technology	42.1%	36.0%	42.9%	72.7%	50.0%	7.9%	-22.7%	22	31.7
Environmental & Animal Sciences	78.9%	30.8%	42.9%	75.0%	50.0%	-28.9%	-25.0%	4	46.0
Healthcare & Social Practice	65.1%	63.9%	67.7%	69.2%	75.0%	9.9%	5.8%	36	80.3
Trades & Services	91.7%	42.9%	56.3%	46.2%	53.3%	-38.4%	7.1%	15	95.4
Grand Total	64.7%	56.5%	58.7%	62.3%	62.6%	-2.1%	0.3%	198	521.9

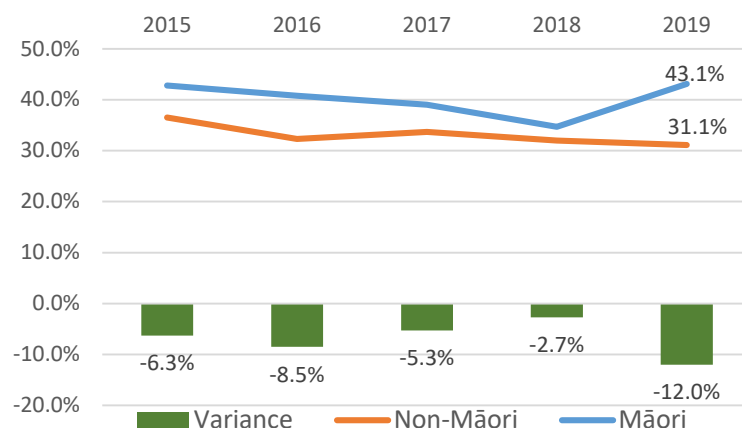
Māori Progression Rate

Progression (from Level
1-4 to higher)

43.1%✓

2022 Target: 34.0%, 9.1%

Progression Rate (from Levels 1-4
to higher) - Māori



- 2019 Progression Rate is the only measure for the Māori priority group that more than met the target, reaching to 43.1% or 12.6% higher than the Unitec target of 30.5% set for 2019.
- The Progression Rate is also the only measure that is consistently higher than that for non-Māori over the 5-year period, with this reversed for the other three measures.
- The Unitec rate was, however, lower than the ITP sector benchmark and those achieved by its Auckland counterparts in 2018.

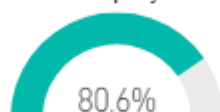
2018 Progression Benchmarks	Māori	Non-Māori	Variance
Unitec	34.7%	32.0%	-2.7%
MIT	37.9%	36.8%	-1.1%
AUT	82.7%	89.5%	6.8%
University of Auckland	91.7%	88.0%	-3.7%
ITP Sector	35.9%	33.7%	-2.2%

Māori Graduate Outcomes in 2020 wave

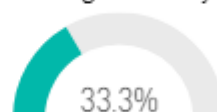
% Graduates
Employed,
Studying or
Combining (GESC)



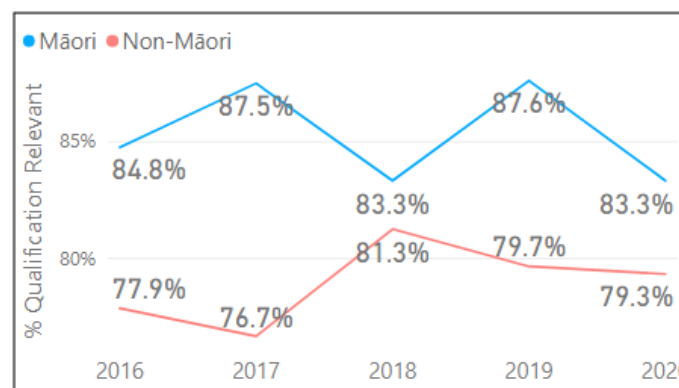
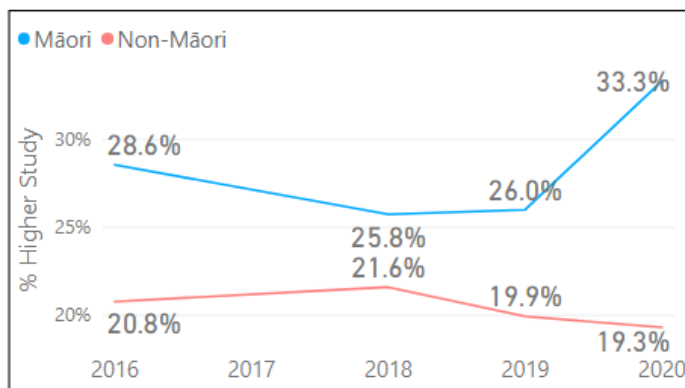
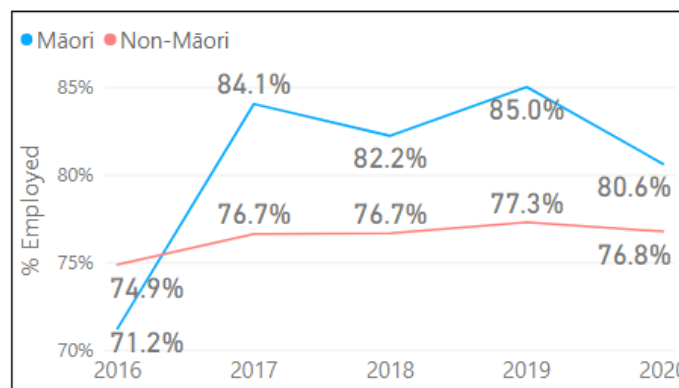
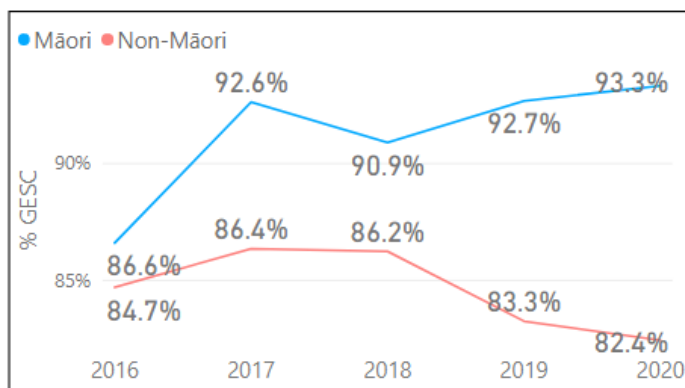
% Employed



% Higher Study



% Qualification Relevant...



- % GESC for Māori continued to stay high in 2020, mainly driven by a 7.3% increase in % Higher Study as % Employed dropped by 4.4% from 2019 to 2020.

Pacific

Pacific Successful Course Completion Rate in 2019 and Year Trends

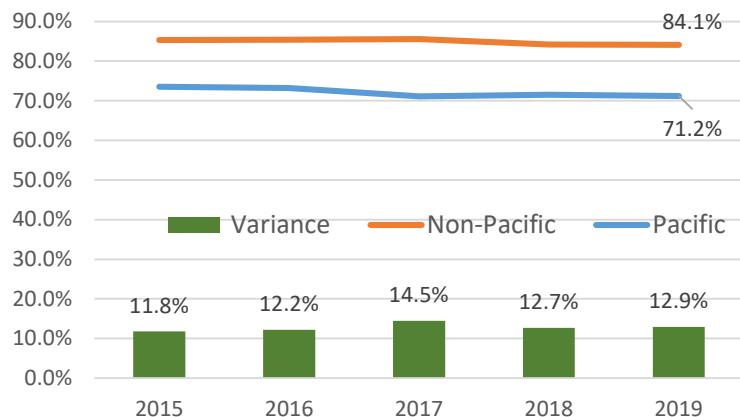
Successful Course Completion

71.2%

2022 Target: 85.0%, -13.8%

- In 2019, the Pacific Successful Course Completion Rate continued to stay well below its non-Pacific Course Completion Rate, though the variance has slightly decreased since its peak in 2017.
- In 2018, the Pacific Successful Course Completion Rate was below the ITP sector benchmark and those of its key counterparts except Auckland University of Technology.

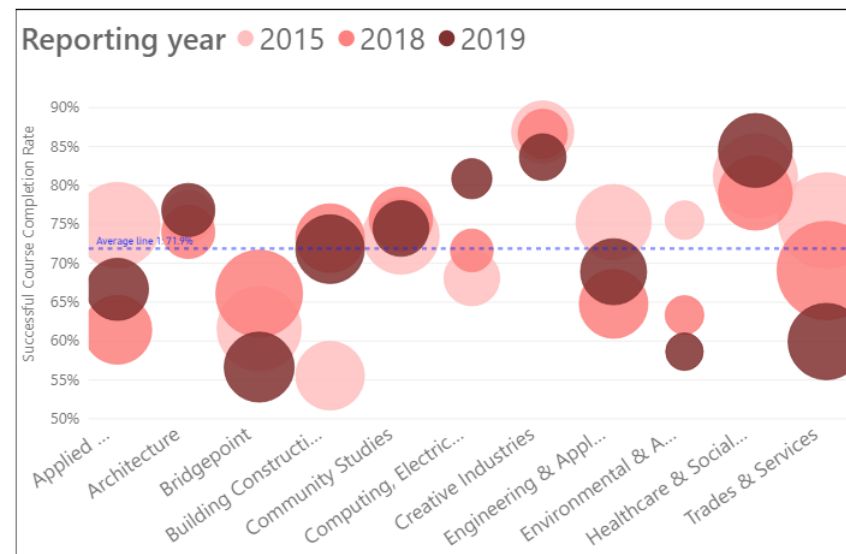
Successful Course Completion Rate
- Pacific



2018 scc Benchmarks	Pacific	Non-Pacific	Variance
Unitec	71.5%	84.2%	12.7%
MIT	73.3%	83.7%	10.4%
AUT	68.9%	87.2%	18.3%
University of Auckland	75.5%	90.4%	14.9%
ITP Sector	72.3%	81.5%	9.2%

Pacific Successful Course Completion Rate by School and Year Trends

- The school performance pattern almost repeats that for the Māori Successful Course Completion Rate.
- Healthcare & Social Practice is the top performer throughout the years. Building Construction showed a favourable upward trend with the biggest jump of all the schools from 2015. Computing also saw an encouraging increase but its impact is relatively insignificant given its small student size.
- Environmental & Animal Sciences and Trade & Services experienced the biggest drop in 2015-2019, with the latter exerting a more impactful downward pull on the overall rate given its large student size.
- Bridgepoint also dropped significantly from 2018, creating a negative impact on the overall Institute performance.



*Student Headcount (Distinct) for the 2019 Reporting Year for SCC; EFTS are total regardless of measures

School	2015	2016	2017	2018	2019	5-year variance	2018-2019 variance	Student Headcount	EFTS
Applied Business	74.9%	72.6%	67.5%	61.4%	66.6%	-8.3%	5.2%	129	73.3
Architecture	76.0%	69.8%	67.8%	74.0%	76.9%	0.9%	2.9%	88	77.9
Bridgepoint	61.6%	68.4%	66.5%	66.1%	56.6%	-5.0%	-9.5%	168	92.8
Building Construction	55.5%	62.3%	66.5%	73.2%	71.8%	16.3%	-1.4%	160	112.4
Community Studies	73.5%	73.3%	81.5%	75.7%	74.5%	1.0%	-1.2%	101	74.3
Computing & Information Technology	68.1%	70.2%	72.5%	71.6%	80.9%	12.8%	9.3%	40	27.8
Creative Industries	86.9%	83.3%	80.8%	86.6%	83.6%	-3.3%	-3.0%	59	53.2
Engineering & Applied Technology	75.3%	73.1%	69.5%	64.8%	68.9%	-6.4%	4.1%	148	100.0
Environmental & Animal Sciences	75.5%	64.3%	56.6%	63.3%	58.6%	-16.9%	-4.7%	32	24.1
Healthcare & Social Practice	81.2%	79.8%	77.1%	79.0%	84.5%	3.3%	5.5%	195	148.0
Trades & Services	75.5%	74.9%	66.1%	69.1%	59.9%	-15.6%	-9.2%	204	127.2
Grand Total	73.70%	73.50%	71.00%	71.10%	71.10%	-2.6%	0.0%	1303	910.7

Pacific Qualification Completion Rate in 2019 and Year Trends

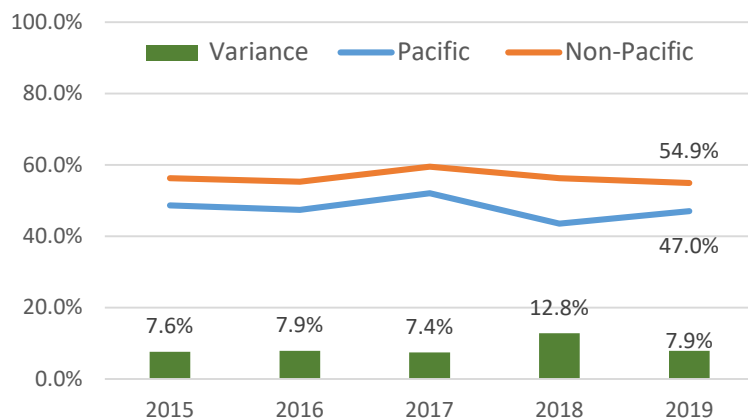
Qualification Completion

47.0%

2022 Target: 60.0%, -13.0%

- The gap between the Pacific and non-Pacific Qualification Completion Rates in 2019 narrowed to almost the 2017 level.
- However, Unitec performed poorly in 2018 as its Pacific Qualification Completion Rate was below the ITP sector benchmark and its Auckland counterparts.

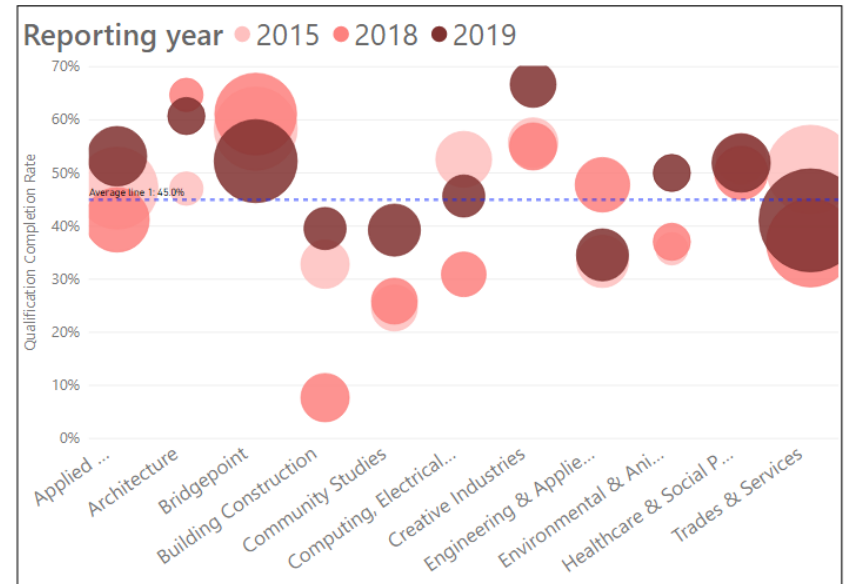
Qualification Completion Rate - Pacific



2018 QC Benchmarks	Pacific	Non-Pacific	Variance
Unitec	43.5%	56.3%	12.8%
MIT	51.8%	54.6%	2.8%
AUT	48.4%	65.7%	17.3%
University of Auckland	55.6%	72.1%	16.5%
ITP Sector	48.5%	52.7%	4.2%

Pacific Qualification Completion Rate by School and Year Trends

- Trades & Services had slightly below average performance in 2019. Given its huge student size, lifting the rate for the school should push up the Institute rate well.
- Six out of 11 schools achieved a 2-digit increase from 2018 to 2019.
- Bridgepoint performed relatively well and above average which is the opposite of its performance in course completion.
- Engineering & Applied Technology saw a large drop of 13.2% from 2018 to 2019, back to their lacklustre 2015 performance.
- Healthcare and Social Practice continued to be a robust performer, and along with Applied Business and Creative Industries which is a top performer, impacted favourably on the overall Pacific Qualification Completion Rate.



*Student Headcount (Distinct) for the 2019 Reporting Year for QC; EFTS are total regardless of measures

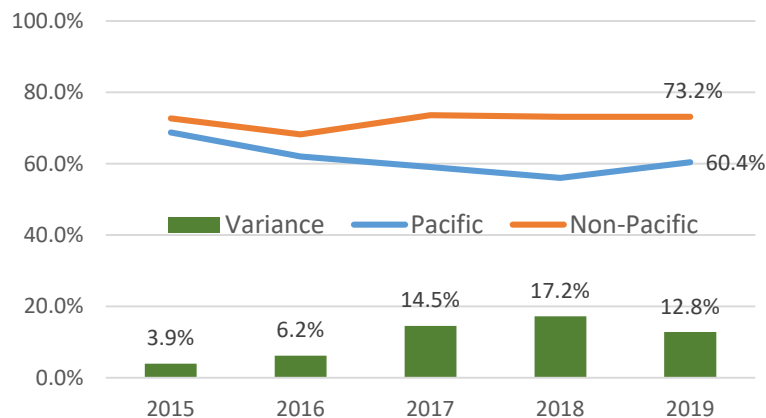
School	2015	2016	2017	2018	2019	5-year variance	2018-2019 variance	Student Headcount	EFTS
Applied Business	47.1%	49.5%	47.4%	41.2%	53.2%	6.1%	12.0%	111	73.3
Architecture	47.1%	40.9%	53.8%	64.7%	60.7%	13.6%	-4.0%	28	77.9
Bridgepoint	58.3%	58.5%	63.5%	61.1%	52.2%	-6.1%	-8.9%	247	92.8
Building Construction	32.8%	26.0%	30.9%	7.7%	39.5%	6.7%	31.8%	43	112.4
Community Studies	24.6%	41.9%	40.5%	25.9%	39.2%	14.6%	13.3%	79	74.3
Computing & Information Technology	52.6%	30.6%	48.2%	30.9%	45.7%	-6.9%	14.8%	44	27.8
Creative Industries	55.7%	58.1%	63.0%	55.0%	66.7%	11.0%	11.7%	57	53.2
Engineering & Applied Technology	33.3%	31.8%	54.3%	47.8%	34.6%	1.3%	-13.2%	81	100.0
Environmental & Animal Sciences	35.7%	44.4%	52.4%	37.0%	50.0%	14.3%	13.0%	28	24.1
Healthcare & Social Practice	52.8%	59.7%	49.5%	50.0%	51.9%	-0.9%	1.9%	106	148.0
Trades & Services	50.7%	46.7%	57.5%	36.8%	41.1%	-9.6%	4.3%	389	127.2
Grand Total	48.7%	47.6%	52.0%	43.3%	46.8%	-1.9%	3.5%	1206	910.7

Pacific First Year Retention Rate - 2019 and year trends

1st Year Retention
60.4%
2022 Target: 75.0%, -14.6%

- The variance between the Pacific and non-Pacific First Year Completion Rates has continuously increased from 2015 to 2018. In 2019, this worrying gap has improved by 4.4%.
- However, similar to its performance in Qualification Completion Rate, the Unitec First Year Retention Rate was below the ITP sector benchmark and well below its key Auckland counterparts.

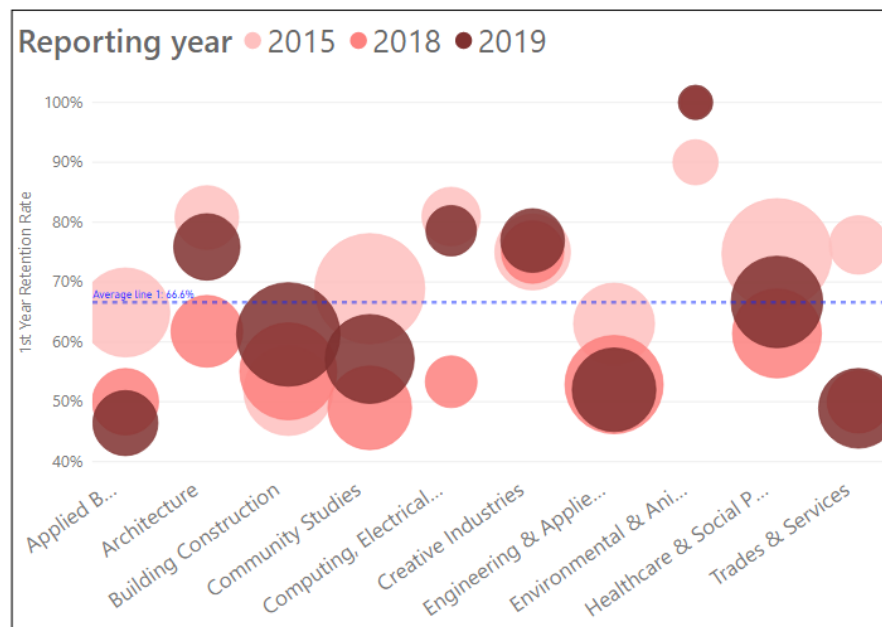
First Year Retention Rate
- Pacific



2018 FYR Benchmarks	Pacific	Non-Pacific	Variance
Unitec	56.0%	73.2%	17.2%
MIT	67.6%	69.2%	1.6%
AUT	68.8%	80.2%	11.4%
University of Auckland	80.4%	83.8%	3.4%
ITP Sector	58.7%	63.3%	4.6%

Pacific First Year Retention Rate by school and Year Trends

- Schools that performed above average had the smallest student size.
- Again Trades & Services had below average performance in 2019, only second to Applied Business. The latter, however, had a much smaller student size and so smaller negative impact.
- Environmental & Animal Sciences had outstanding performance for 2 consecutive years in 2018 to 2019, achieving a 100% retention rate, but with almost negligible impact on the overall rate because of its small student size.



*Bridgepoint is not included in the graph due to its huge fluctuations in 2015-2019 to avoid skewing the visual effect.

*Student Headcount (Distinct) for the 2019 Reporting Year for FYR; EFTS are total regardless of measures

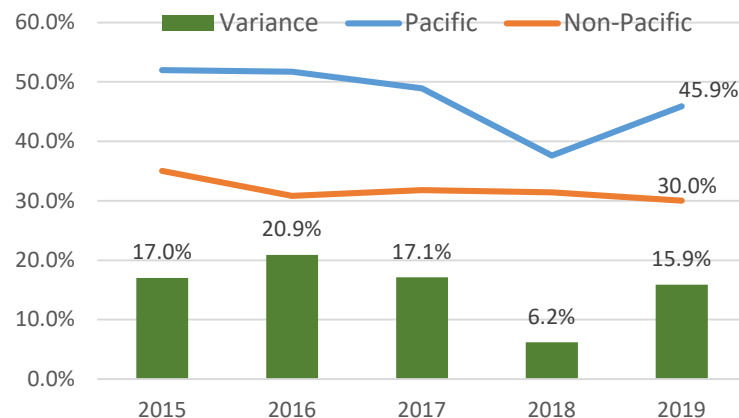
School	2015	2016	2017	2018	2019	5-year variance	2018-2019 variance	Student Headcount	EFTS
Applied Business	64.9%	62.9%	56.1%	50.0%	46.4%	-18.5%	-3.6%	28	73.3
Architecture	80.8%	79.1%	60.0%	61.8%	75.9%	-4.9%	14.1%	29	77.9
Bridgepoint	0.0%	0.0%	NA	NA	NA	NA	NA	0	92.8
Building Construction	51.8%	48.6%	60.0%	55.1%	61.3%	9.5%	6.2%	80	112.4
Community Studies	68.9%	62.0%	46.8%	49.0%	57.1%	-11.8%	8.1%	56	74.3
Computing & Information Technology	81.0%	73.1%	52.6%	53.3%	78.6%	-2.4%	25.3%	14	27.8
Creative Industries	75.0%	83.7%	62.5%	75.0%	76.9%	1.9%	1.9%	26	53.2
Engineering & Applied Technology	63.0%	66.3%	60.0%	52.9%	52.0%	-11.0%	-0.9%	50	100.0
Environmental & Animal Sciences	90.0%	62.5%	66.7%	100.0%	100.0%	10.0%	0.0%	3	24.1
Healthcare & Social Practice	74.7%	64.8%	73.1%	61.4%	66.7%	-8.0%	5.3%	60	148.0
Trades & Services	76.2%	28.0%	52.9%	50.0%	48.9%	-27.3%	-1.1%	45	127.2
Grand Total	69.1%	61.7%	59.2%	56.0%	60.9%	-8.2%	4.9%	389	910.7

Pacific Progression Rate in 2019 and Year Trends

Progression (from Level
1-4 to higher)

45.9%✓

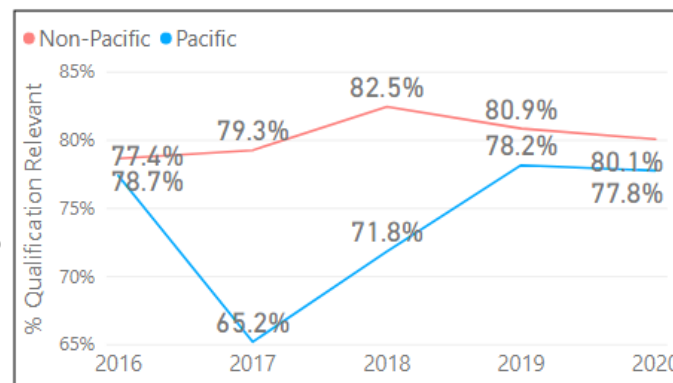
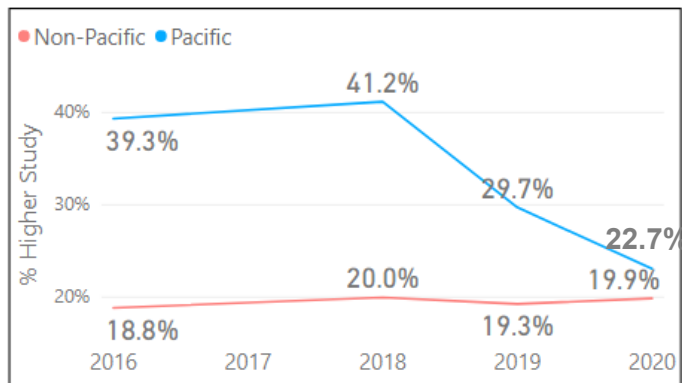
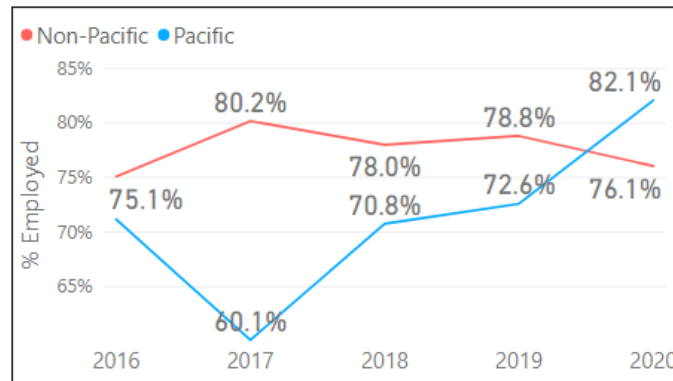
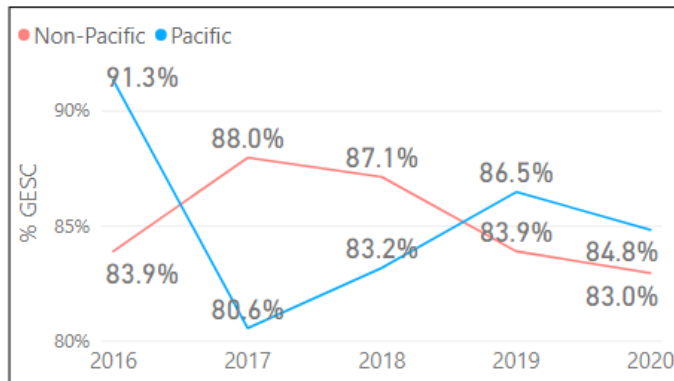
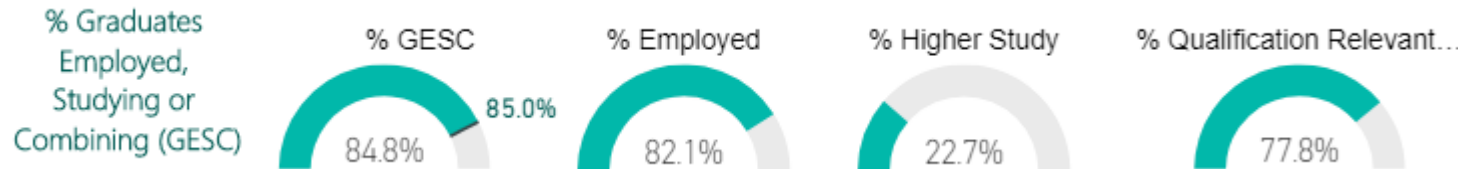
Progression Rate (from Levels 1-4 to higher) - Pacific



- Similar to the Māori pattern, the 2019 Progression Rate is the only measure for Pacific that met the Institute target of 30.5% for 2019, reaching to 45.9% or 15.4% higher than the set target.
- The Progression Rate is also the only measure that is consistently higher than that for non-Pacific over the 5-year period, with this reversed for the other three measures.
- However, the Pacific Progression Rate is still lower than the ITP sector benchmark and that achieved by its key Auckland counterparts.

2018 Progression Benchmarks	Pacific	Non-Pacific	Variance
Unitec	37.6%	31.4%	-6.2%
MIT	41.6%	34.7%	-6.9%
AUT	93.2%	87.9%	-5.3%
University of Auckland	88.7%	89.3%	0.6%
ITP Sector	38.6%	33.7%	-4.9%

Pacific Graduate Outcomes in 2020 wave



- In 2020, % Employed for Pacific went up substantially by 9.5%.
- This was offset by a 7% reduction in % Higher Study, giving an overall 1.7% drop in % GESC.
- The variance between the Pacific and non-Pacific % Qualification Relevant to Employment continued to narrow to only 2% in 2020, almost back to the 2016 level.

Under 25yrs



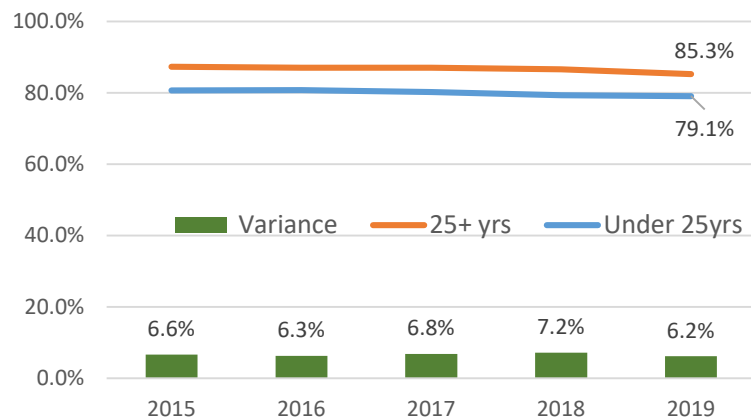
Under 25yrs Successful Course Completion Rate in 2019 and Year Trends

Successful Course Completion

79.1%

2022 Target: 85.0%, -5.9%

Successful Course Completion Rate
- Under 25yrs

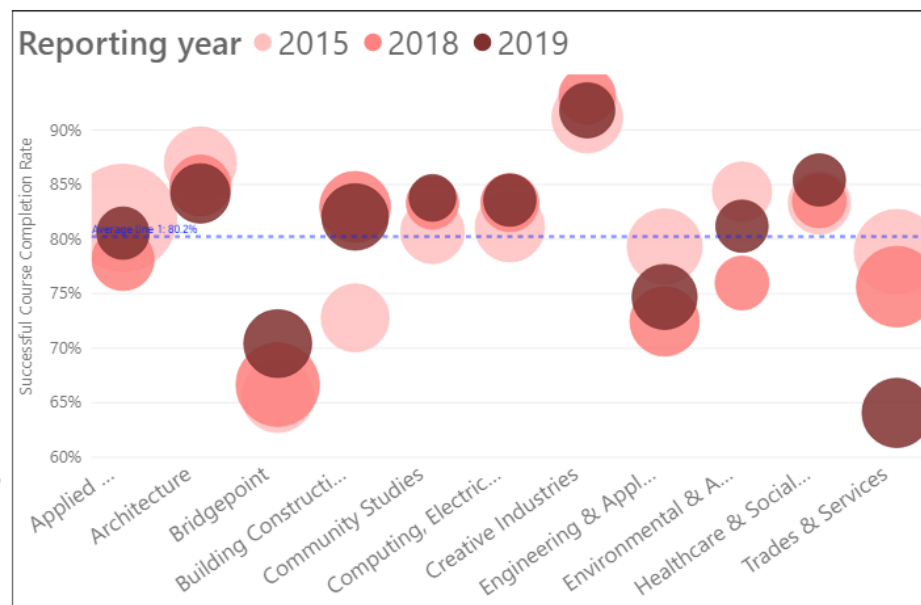


- In 2019, Unitec's Under 25yrs Successful Course Completion Rate edged down slightly by 0.3% from 2018 but with a greater fall for 25+yrs, the variance has dwindled to 6.2%.
- In 2018, the Under 25yrs Successful Course Completion Rate was below the ITP sector benchmark and those of its key counterparts except Manukau Institute of Technology.

2018 SCC Benchmarks	Under 25yrs	25+yrs	variance
Unitec	79.4%	86.6%	7.2%
MIT	76.5%	85.3%	8.8%
AUT	84.0%	88.1%	4.1%
University of Auckland	88.8%	91.9%	3.1%
ITP Sector	79.8%	82.1%	2.3%

Under 25yrs Successful Course Completion Rate by School and Year Trends

- Creative Industries led other schools in each of the past 5 years.
- Building Construction kept a rising trend in 2015-2018. Although it levelled off since 2018 and dropped slightly in 2019, it still showed an above average performance and contributed favourably to the overall Unitec rate given its relatively large student size.
- Trades & Services again performed poorly with a significant drop of 11.5% from 2018 to 2019.
- In 2019, there are 7 schools with above average performance and only three low performing schools but the latter are those with a large student size, hence weighing down the overall Unitec performance.



*Student Headcount (Distinct) for the 2019 Reporting Year for SCC; EFTS are total regardless of measures

School	2015	2016	2017	2018	2019	5-year variance	2018-2019 variance	Student Headcount	EFTS
Applied Business	82.0%	83.2%	80.6%	78.1%	80.6%	-1.4%	2.5%	266	166.8
Architecture	87.0%	81.7%	83.1%	84.9%	84.2%	-2.8%	-0.7%	385	367.6
Bridgepoint	65.6%	74.1%	72.6%	66.6%	70.4%	4.8%	3.8%	536	306.1
Building Construction	72.8%	78.1%	79.5%	83.0%	82.0%	9.2%	-1.0%	509	384.7
Community Studies	80.7%	80.8%	84.6%	83.3%	83.8%	3.1%	0.5%	204	157.3
Computing & Information Technology	81.1%	78.5%	84.7%	83.3%	83.6%	2.5%	0.3%	269	205.7
Creative Industries	91.2%	91.7%	92.2%	93.2%	91.8%	0.6%	-1.4%	309	291.8
Engineering & Applied Technology	79.3%	76.0%	77.4%	72.5%	74.7%	-4.6%	2.2%	496	361.0
Environmental & Animal Sciences	84.4%	82.3%	78.0%	76.0%	81.2%	-3.2%	5.2%	281	224.1
Healthcare & Social Practice	83.3%	84.3%	82.3%	83.5%	85.4%	2.1%	1.9%	281	208.9
Trades & Services	78.8%	77.9%	69.8%	75.6%	64.1%	-14.7%	-11.5%	577	382.4
Grand Total	81.0%	80.9%	80.1%	79.2%	79.2%	-1.8%	0.0%	4049	3056.5

Under 25yrs Qualification Completion Rate in 2019 and Year Trends

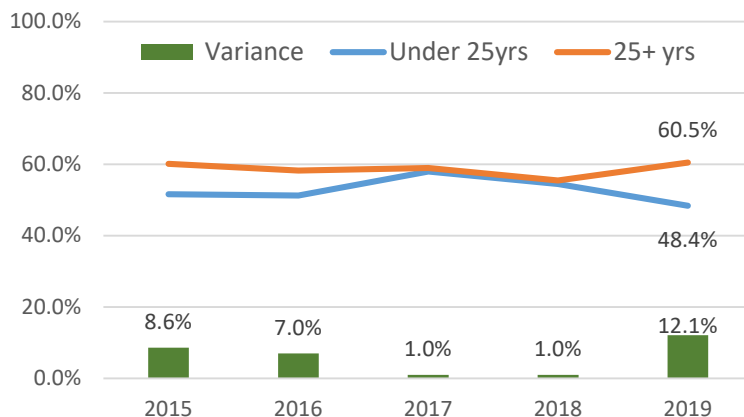
Qualification Completion

48.4%

2022 Target: 60.0%, -11.6%

- In 2019, the Qualification Completion Rate for Under 25yrs dropped 6.1% from 2018 while that for 25+ years increased 5%, resulting in a 12.1% variance, despite the near closing of the gap in the previous 2 years.
- In 2018, the 25yrs Qualification Completion Rate was above Manukau Institute of Technology and the ITP sector rates but below those of the two Auckland universities.

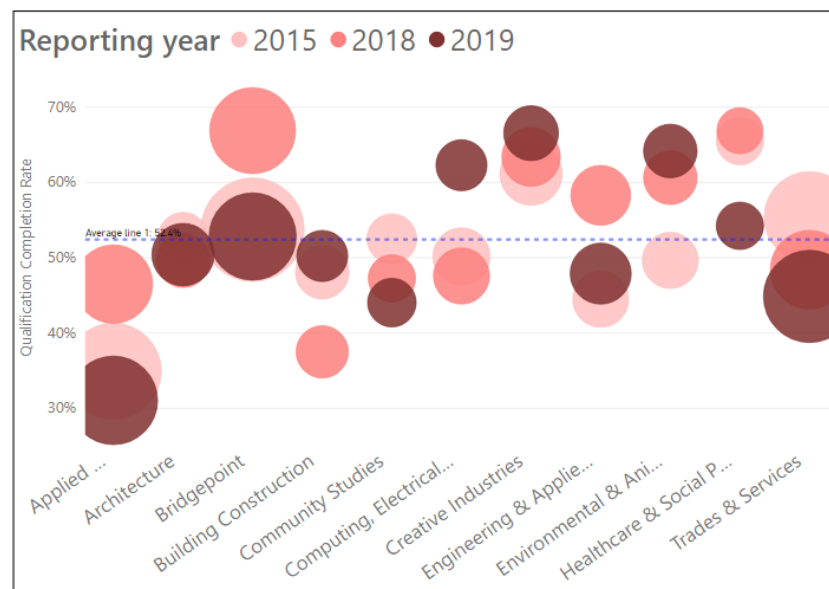
Qualification Completion Rate - Under 25yrs



2018 QC Benchmarks	Under 25yrs	25+yrs	Variance
Unitec	54.5%	55.5%	1.0%
MIT	52.6%	55.4%	2.8%
AUT	62.8%	66.3%	3.5%
University of Auckland	70.4%	70.8%	0.4%
ITP Sector	53.8%	51.4%	-2.4%

Under 25 Qualification Completion Rate by School and Year Trends

- Creative Industries, Computing & Information Technology and Environmental and Animal Sciences stayed well above the others in 2019, though all had a relatively small student size.
- Applied Business and Bridgepoint that had the second and third largest student size both saw a biggest drop from 2018. Applied Business hit a record low of 31.3% in 2019.
- Healthcare and Social Practice reversed its good performance and had a 2-digit decrease during both the 2-year and 5-year period.
- Trades & Services that had the largest student size reached its lowest in 2019 over the 5-year period.
- Together this resulted in a low of 48.3% in 2019, the lowest for Unitec over the past 5 years.



*Student Headcount (Distinct) for the 2019 Reporting Year for QC; EFTS are total regardless of measures

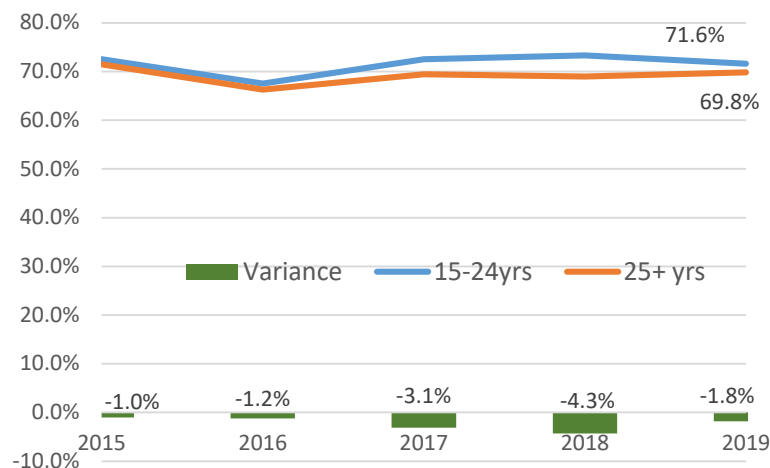
School	2015	2016	2017	2018	2019	5-year variance	2018-2019 variance	Student Headcount	EFTS
Applied Business	34.9%	36.8%	51.4%	46.5%	31.1%	-3.8%	-15.4%	818	166.8
Architecture	52.7%	44.9%	44.0%	49.6%	50.4%	-2.3%	0.8%	363	367.6
Bridgepoint	53.7%	55.4%	64.6%	66.9%	52.8%	-0.9%	-14.1%	796	306.1
Building Construction	48.1%	35.3%	40.7%	37.5%	50.2%	2.1%	12.7%	212	384.7
Community Studies	52.5%	54.9%	45.7%	47.3%	44.0%	-8.5%	-3.3%	193	157.3
Computing & Information Technology	50.2%	47.3%	55.7%	47.6%	62.3%	12.1%	14.7%	226	205.7
Creative Industries	61.1%	60.0%	66.7%	63.4%	66.5%	5.4%	3.1%	269	291.8
Engineering & Applied Technology	44.5%	47.9%	60.8%	58.3%	47.9%	3.4%	-10.4%	355	361.0
Environmental & Animal Sciences	49.6%	59.0%	62.9%	60.6%	64.2%	14.6%	3.6%	253	224.1
Healthcare & Social Practice	65.5%	55.9%	61.1%	66.9%	54.2%	-11.3%	-12.7%	177	208.9
Trades & Services	55.4%	55.8%	58.5%	48.4%	44.9%	-10.5%	-3.5%	899	382.4
Grand Total	50.0%	50.1%	56.3%	54.5%	48.3%	-1.7%	-6.2%	4531	3056.5

Under 25yrs First Year Retention Rate in 2019 and Year Trends

1st Year Retention
71.6%
2022 Target: 75.0%, -3.4%

- In 2019, the variance in First Year Retention Rate between under 25yrs and 25+yrs further narrowed.
- In 2018, Unitec had the smallest variance when compared with the ITP Sector and its key Auckland counterparts.

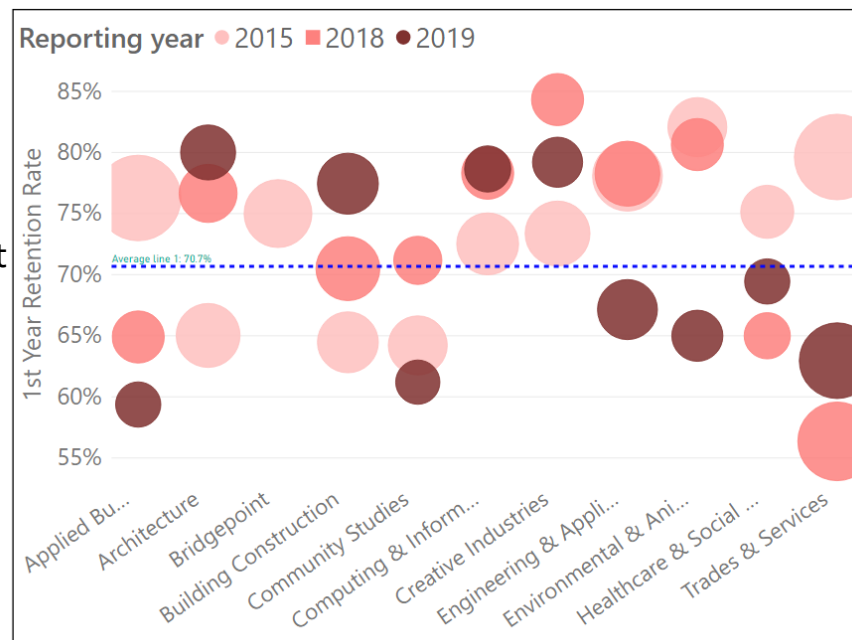
First Year Retention Rate
- Under 25yrs



2018 Retention Benchmarks	Under 25yrs	25+yrs	variance
Unitec	73.3%	69.0%	-4.3%
MIT	72.0%	62.6%	-9.4%
AUT	80.5%	73.6%	-6.9%
University of Auckland	84.9%	77.3%	-7.6%
ITP Sector	68.7%	55.9%	-12.8%

Under 25 First Year Retention Rate by School and Year Trends

- Architecture, Building Construction, Creative Industries and Computing & Information Technology stayed high above the average in 2019. The first 2 in particular saw a consistent robust rising trend.
- Environmental and Animal Sciences suffered the biggest drop over the 2-year and 5-year periods.
- Both Applied Business and Trades & Services again witnessed a significant drop in the 5-year period, although Trades & Services went up from 2018 to 2019 to become the third lowest performer. Given its largest student size, its impact dwarfed that made by others.
- Engineering & Applied Technology performed well in 2018 but declined to below average in 2019.



*Bridgepoint is not included in the graph due to its huge fluctuations in 2015-2019 to avoid skewing the visual effect.

*Student Headcount (Distinct) for the 2019 Reporting Year for FYR; EFTS are total regardless of measures

School	2015	2016	2017	2018	2019	5-year variance	2018-2019 variance	Student Headcount	EFTS
Applied Business	76.3%	69.0%	81.0%	64.9%	59.4%	-16.9%	-5.5%	64	166.8
Architecture	65.0%	59.5%	79.1%	76.6%	80.0%	15.0%	3.4%	165	367.6
Bridgepoint	75.0%	100.0%	100.0%	100.0%	0.0%	-75.0%	-100.0%	5	306.1
Building Construction	64.5%	68.1%	74.1%	70.5%	77.4%	12.9%	6.9%	235	384.7
Community Studies	64.2%	61.4%	53.6%	71.2%	61.2%	-3.0%	-10.0%	116	157.3
Computing & Information Technology	72.5%	74.4%	69.4%	78.3%	78.7%	6.2%	0.4%	89	205.7
Creative Industries	73.4%	78.9%	72.5%	84.3%	79.2%	5.8%	-5.1%	125	291.8
Engineering & Applied Technology	78.1%	74.8%	66.2%	78.3%	67.1%	-11.0%	-11.2%	210	361.0
Environmental & Animal Sciences	82.1%	59.8%	67.9%	80.6%	65.0%	-17.1%	-15.6%	20	224.1
Healthcare & Social Practice	75.1%	66.2%	80.0%	65.0%	69.4%	-5.7%	4.4%	108	208.9
Trades & Services	79.6%	42.0%	62.7%	56.4%	63.0%	-16.6%	6.6%	81	382.4
Grand Total	72.5%	67.5%	72.5%	73.3%	71.6%	-0.9%	-1.7%	1214	3056.5

Under 25 Progression Rate in 2019 and Year Trends

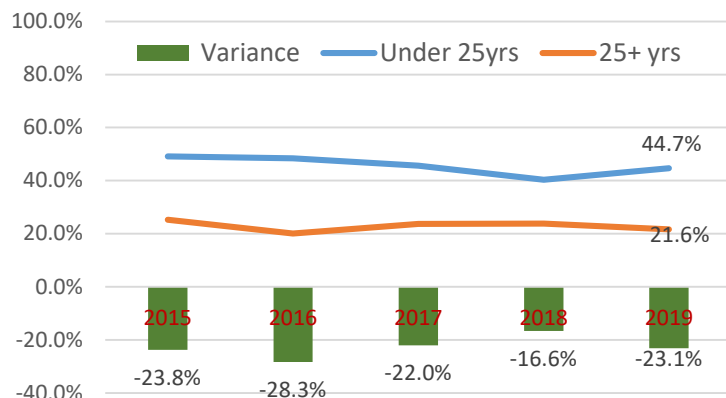
Progression (from Level
1-4 to higher)

44.7% ✓

2022 Target: 34.0%, 10.7%

- in 2019, the Progression Rate for Under 25yrs increased 4.3%, widening the variance and lifting the group further above the 25+yrs.
- Unitec Under 25yr Progression Rate was only slightly above the ITP Sector benchmark but fell below Manukau Institute of Technology and far below its University counterparts.

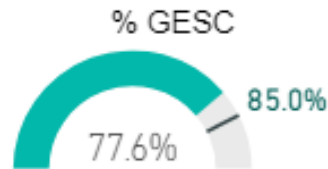
Qualification Completion Rate - Under 25yrs



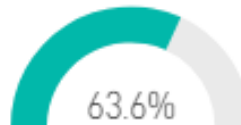
2018 Progression Benchmarks	Under 25yrs	25+yrs	Variance
Unitec	40.4%	23.8%	-16.6%
MIT	40.9%	33.8%	-7.1%
AUT	90.3%	65.4%	-24.9%
University of Auckland	89.9%	80.0%	-9.9%
ITP Sector	40.0%	29.6%	-10.4%

Under 25yrs Graduate Outcomes

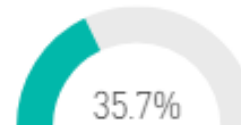
% Graduates
Employed,
Studying or
Combining (GESC)



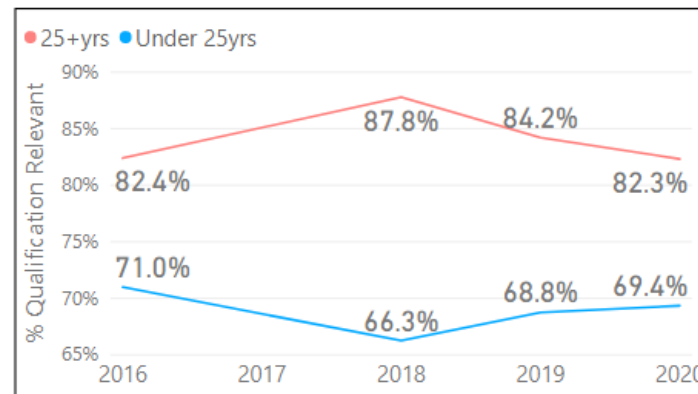
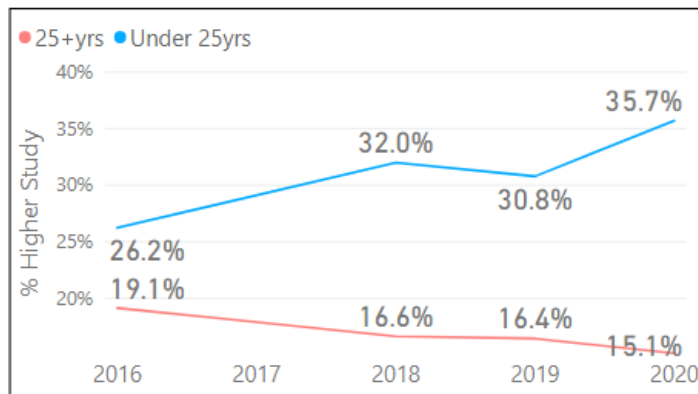
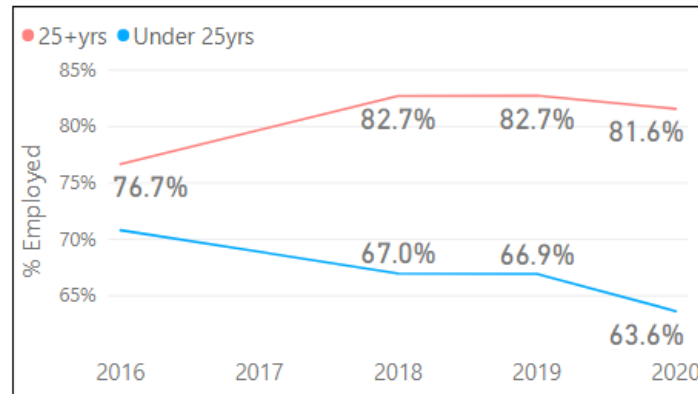
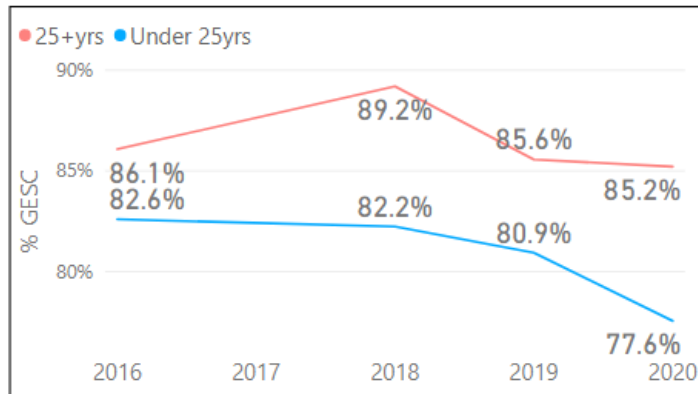
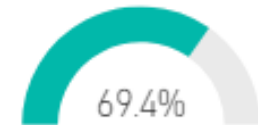
% Employed



% Higher Study



% Qualification Relevant...



- In 2020, % GESC went down 3.3% due to the same percentage drop in % Employed.
- This is despite an increase of 4.9% in % Higher Study, suggesting that those who were engaged in Higher Study were also employed, hence offsetting the increase.
- The % Qualification Relevant to Employment for the Under 25yrs remains consistently lower than that for the 25+yrs group.

International



International Successful Course Completion Rate in 2019 and Year Trends

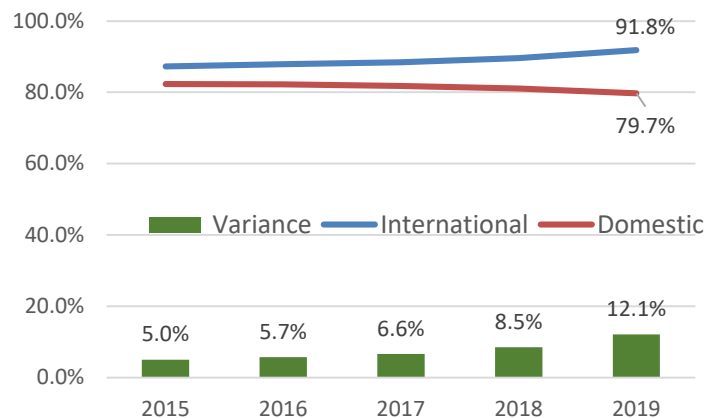
Successful Course Completion

91.8%✓

2022 Target: 85.0%, 6.8%

- In 2019, the Successful Course Completion Rate for International exceeded the Institute target of 82% by 9.8%.
- Back in 2018, Unitec had the lowest rate when compared with the ITP Sector and its key Auckland counterparts.

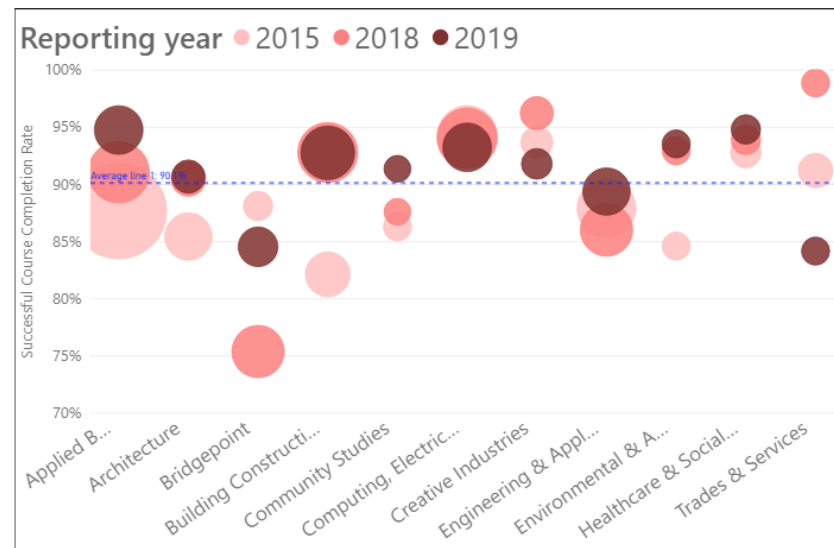
Successful Course Completion Rate - International



2018 SCC Benchmarks	International	Domestic	Variance
Unitec	89.6%	81.1%	-8.5%
MIT	92.6%	77.9%	-14.7%
AUT	91.2%	83.7%	-7.5%
University of Auckland	90.7%	89.0%	-1.7%
ITP Sector	91.4%	78.9%	-12.5%

International Successful Course Completion Rate by School and Year Trends

- Applied Business has shown a rising trend and reached 94.8% in 2019 to become the top performers together with Healthcare & Social Practice.
- Also performing well was Building Construction which increased continuously over the years to reach 90.8%. With its large student size, it has contributed favourably to the overall Unitec rate together with the buoyant performer Computing & Information Technology.
- Trades & Services as the lowest performer has decreased over the years considerably but has not hugely impacted on the overall rate given its small student size. Similarly for the low performer Bridgepoint which fluctuated in the 5-year period but did not produce a significant impact on the Unitec rate.
- Community Studies saw a nice climb in 2019 after having plateaued in 2018.



*Student Headcount (Distinct) for the 2019 Reporting Year for SCC; EFTS are total regardless of measures

School	2015	2016	2017	2018	2019	5-year variance	2018-2019 variance	Student Headcount	EFTS
Applied Business	87.7%	89.4%	88.8%	91.1%	94.8%	7.1%	3.7%	259	181.8
Architecture	85.4%	86.1%	91.0%	90.5%	90.7%	5.3%	0.2%	69	83.1
Bridgepoint	88.1%	88.4%	79.1%	75.4%	84.6%	-3.5%	9.2%	134	72.7
Building Construction	82.1%	87.8%	88.9%	92.8%	92.8%	10.7%	0.0%	324	251.0
Community Studies	86.3%	81.2%	87.8%	87.6%	91.4%	5.1%	3.8%	10	7.3
Computing & Information Technology	94.3%	92.5%	92.5%	94.1%	93.3%	-1.0%	-0.8%	263	195.2
Creative Industries	93.7%	92.8%	97.7%	96.2%	91.8%	-1.9%	-4.4%	46	41.7
Engineering & Applied Technology	87.9%	82.7%	85.4%	86.0%	89.4%	1.5%	3.4%	244	205.0
Environmental & Animal Sciences	84.6%	89.0%	89.8%	93.0%	93.6%	9.0%	0.6%	26	21.4
Healthcare & Social Practice	92.8%	96.0%	91.8%	93.9%	94.8%	2.0%	0.9%	39	31.4
Trades & Services	91.2%	94.7%	88.6%	98.9%	84.2%	-7.0%	-14.7%	21	12.1
Grand Total	88.5%	88.5%	88.3%	89.6%	91.7%	3.2%	2.1%	1390	1102.7

International Qualification Completion Rate in 2019 and Year Trends

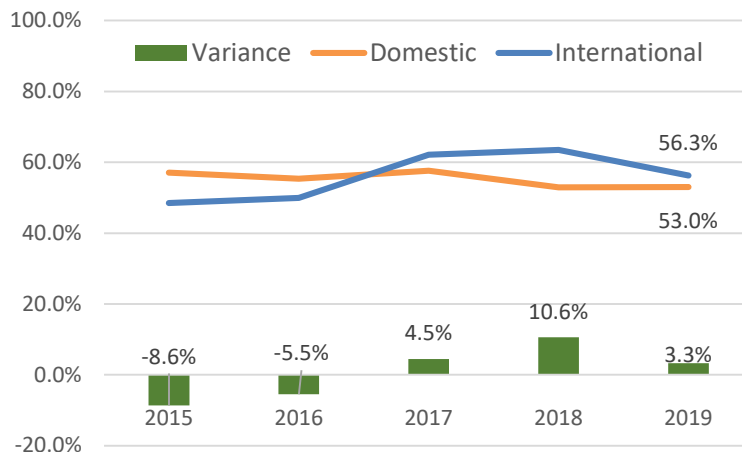
Qualification Completion

56.3%

2022 Target: 60.0%, -3.7%

- In 2019, the Qualification Completion Rate dropped 7.2% from 2018 to 2019 but managed to meet the institutional target of 55% for 2019.
- In 2018, although Unitec was below its University counterparts in Qualification Completion rate, it performed better than the ITP sector and Manukau Institute of Technology.

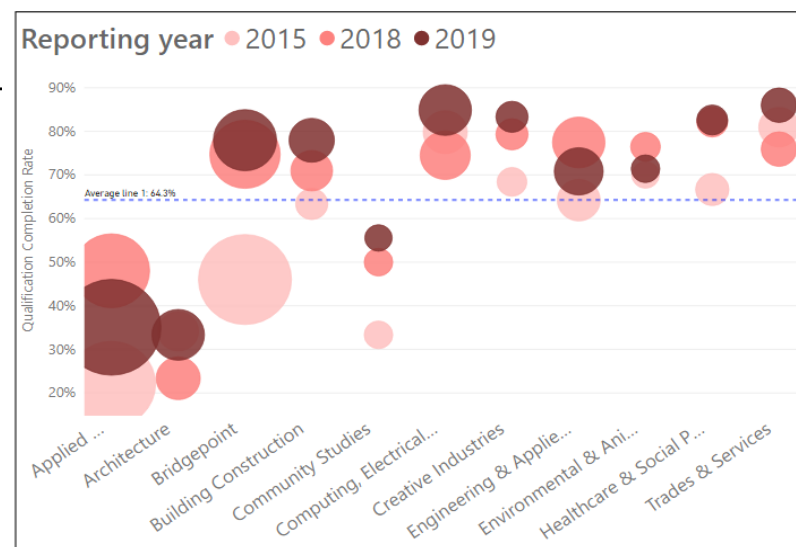
Qualification Completion Rate - International



2018 QC Benchmarks	International	Domestic	Variance
Unitec	63.5%	52.9%	-10.6%
MIT	57.9%	53.3%	-4.6%
AUT	76.2%	61.6%	-14.6%
University of Auckland	74.6%	70.0%	-4.6%
ITP Sector	63.0%	51.3%	-11.7%

International Qualification Completion Rate by School and Year Trends

- Building Construction kept up its rising momentum throughout the 5-year period while Computing & Information Technology rebound from its low in 2018 to a high of 84.9% to become the second top performer.
- Engineering & Applied Technology also performed above average despite a drop of 6.7% from 2018 to 2019.
- Both Applied Business and Architecture were low performers in the 5-year period though the former had a much larger student size and hence greater negative impact.
- Of interesting concern is Applied Business which had the top Successful Course Completion Rate but the second lowest Qualification Completion Rate in 2019 for this priority group.



*Student Headcount (Distinct) for the 2019 Reporting Year for QC; EFTS are total regardless of measures

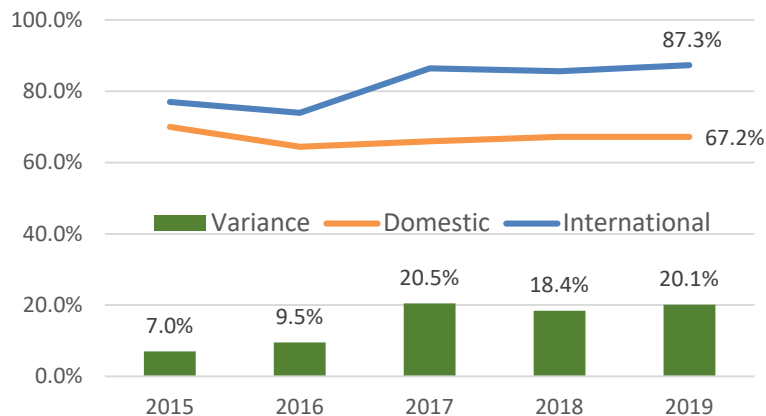
School	2015	2016	2017	2018	2019	5-year variance	2018-2019 variance	Student Headcount	EFTS
Applied Business	22.0%	31.2%	49.6%	48.0%	35.1%	13.1%	-12.9%	753	181.8
Architecture	34.1%	22.4%	23.2%	23.4%	33.3%	-0.8%	9.9%	174	83.1
Bridgepoint	46.0%	53.5%	47.1%	74.7%	78.0%	32.0%	3.3%	279	72.7
Building Construction	63.3%	61.3%	65.4%	71.0%	78.0%	14.7%	7.0%	116	251.0
Community Studies	33.3%	50.0%	42.9%	50.0%	55.6%	22.3%	5.6%	9	7.3
Computing & Information Technology	79.8%	72.6%	83.2%	74.5%	84.9%	5.1%	10.4%	170	195.2
Creative Industries	68.4%	60.7%	83.3%	79.3%	83.3%	14.9%	4.0%	30	41.7
Engineering & Applied Technology	64.2%	60.0%	78.2%	77.5%	70.8%	6.6%	-6.7%	144	205.0
Environmental & Animal Sciences	70.0%	63.6%	66.7%	76.5%	71.4%	1.4%	-5.1%	14	21.4
Healthcare & Social Practice	66.7%	58.6%	88.0%	82.1%	82.6%	15.9%	0.5%	23	31.4
Trades & Services	81.0%	79.5%	79.4%	75.9%	86.0%	5.0%	10.1%	50	12.1
Grand Total	43.2%	46.9%	56.9%	63.3%	55.7%	12.5%	-7.6%	1740	1102.7

International First Year Retention Rate in 2019 and Year Trends

1st Year Retention
87.3%✓
2022 Target: 75.0%, 12.3%

- In 2019, the International First Year Retention Rate continued its rising trend and went up 1.7% to 87.3%, well above the institutional target.
- In 2018, although Unitec was below its University counterparts in the First Year Retention Rate, it performed better than the ITP sector and was far above Manukau Institute of Technology.

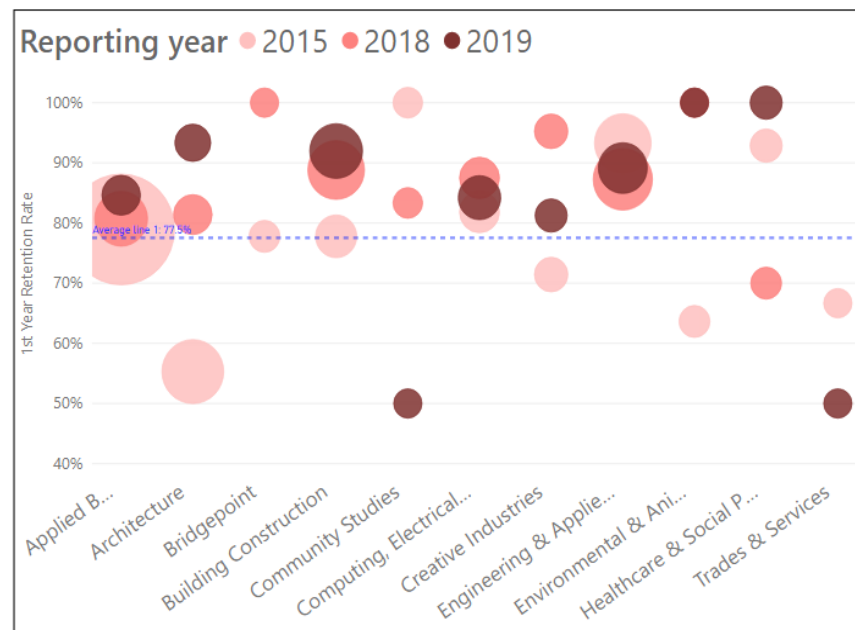
First Year Retention Rate
- International



2018 FYR Benchmarks	International	Domestic	Variance
Unitec	85.6%	67.2%	-18.4%
MIT	57.1%	71.6%	14.5%
AUT	90.9%	77.4%	-13.5%
University of Auckland	92.5%	82.3%	-10.2%
ITP Sector	71.6%	61.4%	-10.2%

International First Year Retention Rate by School and Year Trends

- Despite being top performers in 2019, Environmental & Animal Sciences and Healthcare & Social Practice had a very small student size and so minimal impact on the overall rate.
- Building Construction continued its excellent performance.
- Of interest is Engineering & Applied Technology which did not do well or was below average in all other priority groups performed well in the International Group.
- Community Studies continued its downward turn over the 5-year period and Trades & Services showed a rebound but was still far below average.



*Student Headcount (Distinct) for the 2019 Reporting Year for FYR; EFTS are total regardless of measures

School	2015	2016	2017	2018	2019	5-year variance	2018-2019 variance	Student Headcount	EFTS
Applied Business	78.9%	74.4%	87.8%	80.7%	84.6%	5.7%	3.9%	39	181.8
Architecture	55.3%	32.0%	86.0%	81.4%	93.3%	38.0%	11.9%	30	83.1
Bridgepoint	77.8%	100.0%	100.0%	100.0%	0.0%	-77.8%	-100.0%	5	72.7
Building Construction	77.8%	81.9%	88.4%	88.8%	92.0%	14.2%	3.2%	112	251.0
Community Studies	100.0%	92.3%	100.0%	83.3%	50.0%	-50.0%	-33.3%	4	7.3
Computing & Information Technology	81.8%	86.3%	84.5%	87.5%	84.2%	2.4%	-3.3%	57	195.2
Creative Industries	71.4%	72.2%	90.5%	95.2%	81.3%	9.9%	-13.9%	16	41.7
Engineering & Applied Technology	93.3%	91.1%	81.9%	87.2%	89.1%	-4.2%	1.9%	92	205.0
Environmental & Animal Sciences	63.6%	70.0%	60.0%	100.0%	100.0%	36.4%	0.0%	4	21.4
Healthcare & Social Practice	92.9%	42.9%	92.9%	70.0%	100.0%	7.1%	30.0%	14	31.4
Trades & Services	66.7%	0.0%	66.7%	0.0%	50.0%	-16.7%	50.0%	4	12.1
Grand Total	77.0%	73.8%	86.4%	85.7%	87.3%	10.3%	1.6%	377	1102.7

International Progression Rate in 2019 and Year Trends

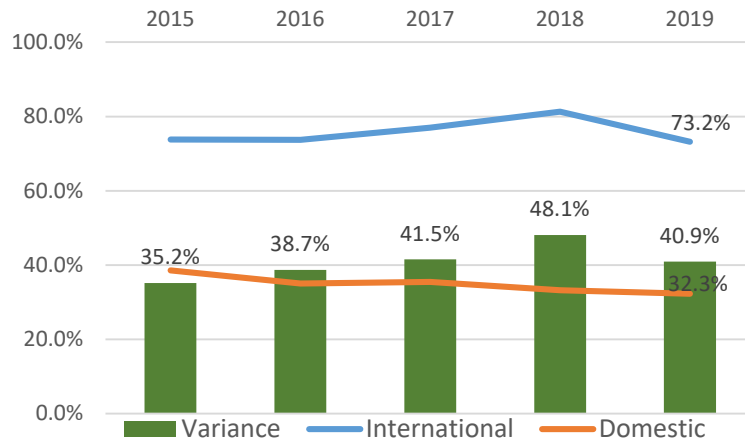
Progression
(from Levels 1-4 to higher)

73.2%

2022 Target: 34.0%, +39.2

- In 2019, the Progression Rate dropped 8.1% from 2018 to 73.2% in 2019 after a 4-year rising trend.
- In 2018, the Unitec rate was below that for the University of Auckland but otherwise above its other counterparts and the ITP sector.

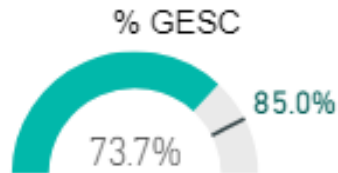
Progression Rate (from Levels 1-4 to higher) - International



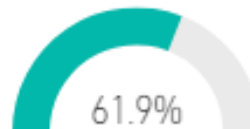
2018 Progression Benchmarks	International	Domestic	Variance
Unitec	81.3%	33.2%	-48.1%
MIT	57.6%	37.9%	-19.7%
AUT	72.7%	67.2%	-5.5%
University of Auckland	94.2%	89.0%	-5.2%
ITP Sector	66.2%	32.9%	-33.3%

International Graduate Outcomes

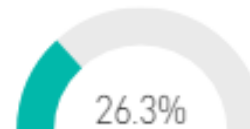
% Graduates
Employed,
Studying or
Combining (GESC)



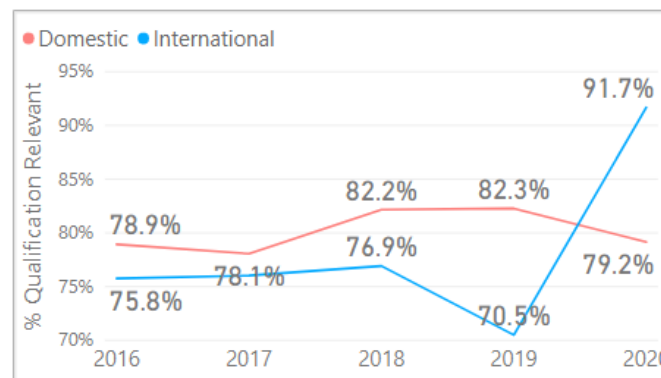
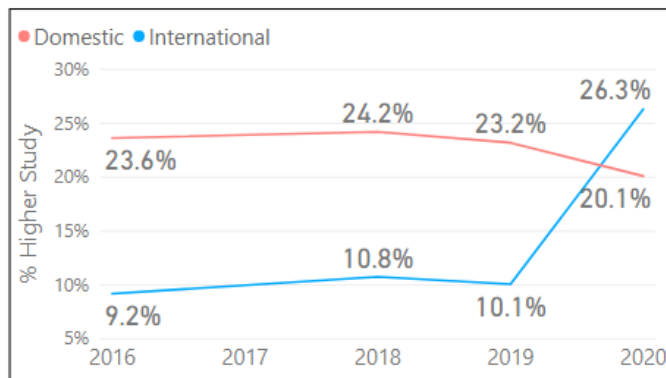
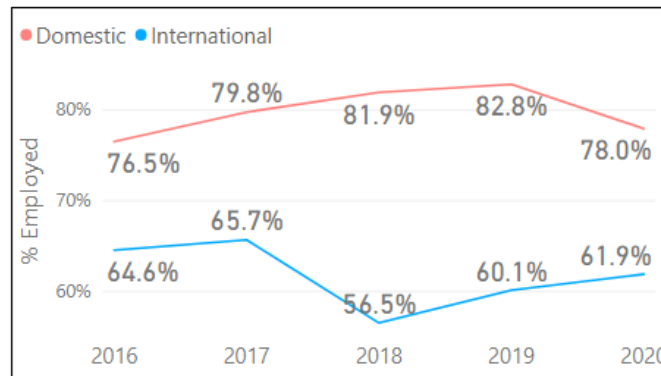
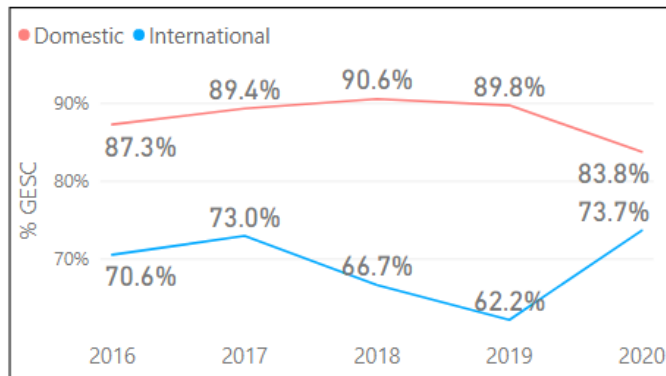
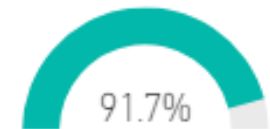
% Employed



% Higher Study



% Qualification Relevant...



- In 2020, % GESC for International went up 11.5% fuelled by both a 1.8% rise in % Employed and a significant 16.2% rise in % Higher Study.
- % Qualification Relevant to Employment for International jumped 21.2% to its highest over the last 5 years.



Student Performance KPIs & Definitions

All New Zealand tertiary institutes are measured and benchmarked using the same EPI metrics and definitions. Below is a brief description of each. More detailed information and methodology can be found at <https://www.tec.govt.nz/assets/Forms-templates-and-guides/631b96b442/EPI-Guidelines-Methodology-Update-August-2018.pdf>

EPI #1: Successful course completion rate – the proportion of course enrolments (calculated on an EFTS delivered basis) ending in a given year that have been successfully completed

EPI #2: Cohort-based first year retention rate - the proportion of students in a cohort who enrol in a qualification at the same level in the year after they enter the cohort. First year retention rates are measured for students who are enrolled in a 2 EFTS or above qualification at level 4 and above.

EPI #3: Cohort-based qualification completion rate - the proportion of students in a cohort who go on to complete a qualification at the same level as the cohort.

EPI #4: Student progression rate – the proportion of students completing a qualification who then enrol, within a given time period, in a higher-level qualification. The enrolment in a higher level qualification can be at any TEO.

Graduates employed, studying or combining (GESC) - the proportion of students who have graduated that are either employed, studying or both. This is based off survey data conducted by students who have graduated.

Relevance of qualification to employment - the proportion of graduate students who are employed who rate their main job as 'highly related' or 'moderately related' to their qualification. This is based off survey data conducted by students who have graduated.