



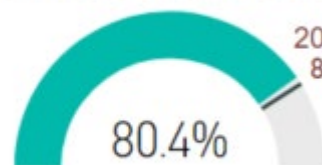
Student Performance Interim Report 2019

March 2020
Te Korowai Kahurangi

Unitec

Successful Course Completion Rate in 2019 and Year Trends

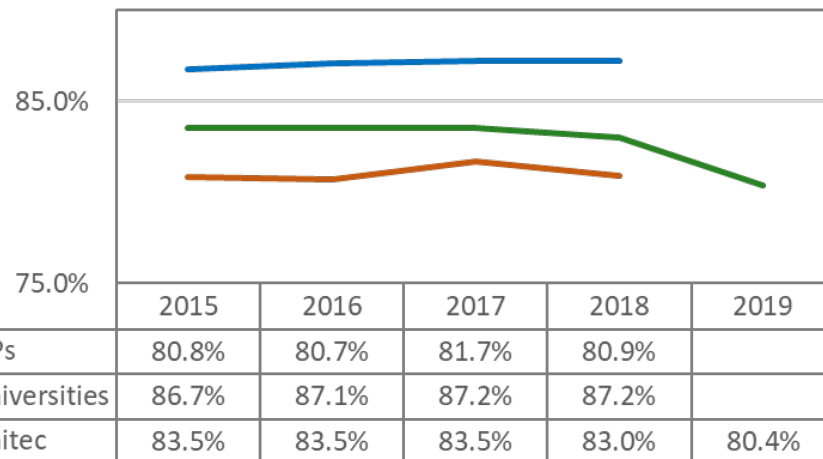
Successful Course Completion Rate



2018 ITP Average = 80.6%

Unitec Targets	2019	2020	2021	2022
Successful Course Completion	82.0%	83.0%	84.0%	85.0%

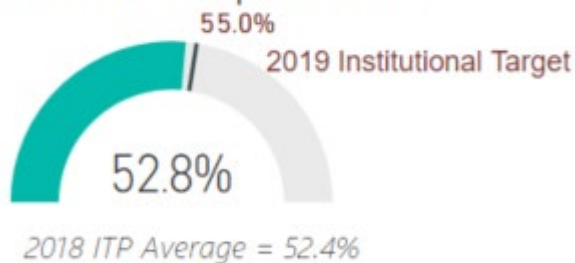
Successful Course Completion Rate



- Based on data submitted in January to Ngā Kete, Unitec achieved 80.4% in 2019. This fell short of the institutional target of 82%, but could be accounted for by unpublished grades. 'Live' SCC data as at 31 March 2020 shows the rate has risen to 82.8%, successfully meeting the target and on a par with 2018.
- For the period of 2015-2018, Unitec has been consistently above the ITP sector benchmarks by more than 2% and below the University benchmarks by more than 3%. The variance with the University sector is widening.

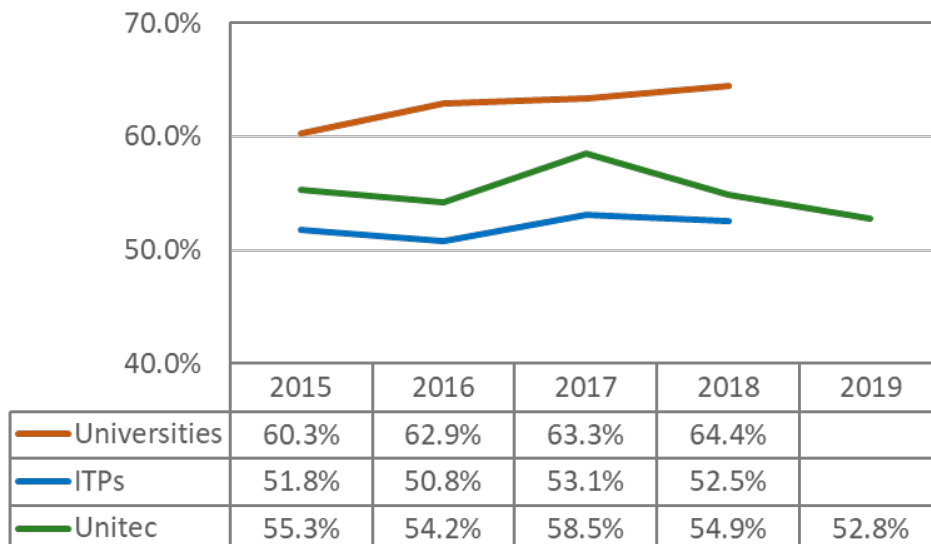
Qualification Completion Rate in 2019 and Year Trends

Qualification Completion Rate



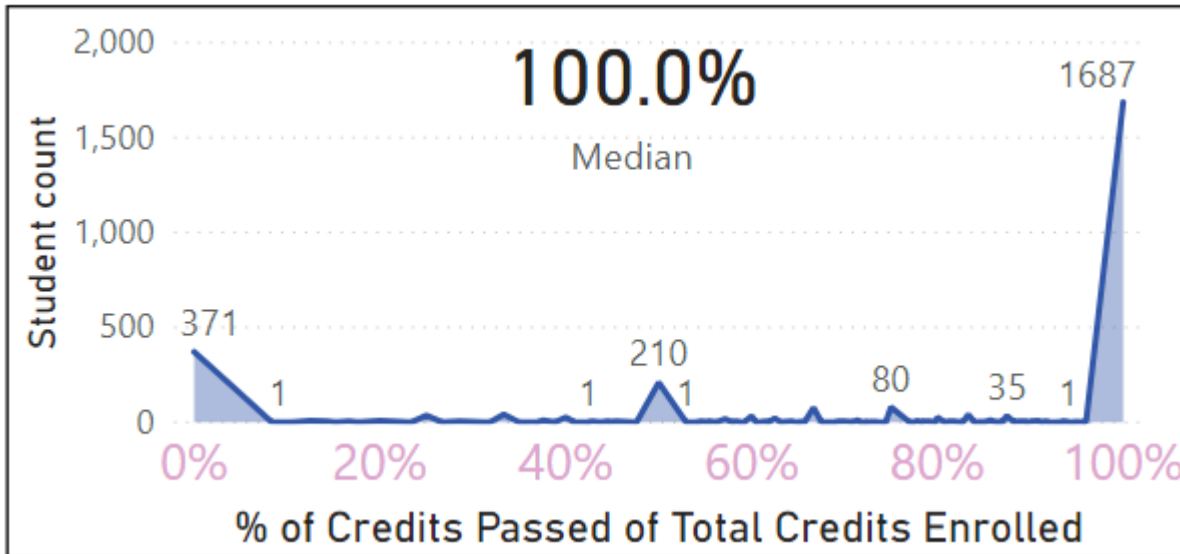
Unitec Targets	2019	2020	2021	2022
Qualification Completion	55.0%	56.0%	58.0%	60.0%

Cohort-based Qualification Completion Rates



- Based on the data submitted to Ngā Kete in January 2019, Unitec achieved a qualification completion rate of 52.8% which fell short of the institutional target of 55%. However, this is again due to a time lag in data entry. As of 1 March, this rose to 54.4%.
- For the period of 2015-2019, while Unitec stays above the ITP sector, the gap is narrowing but its variance with the University sector has been rising noticeably.

High Successful Course Completion Rate and Low Qualification Completion Rate

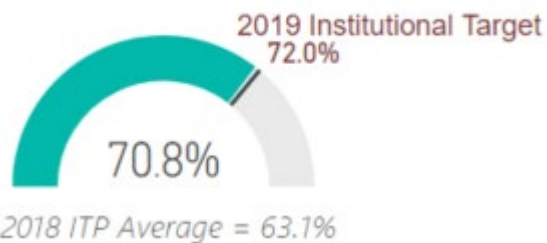


% of Credits Passed of Total Credits Enrolled	Student count	% of Total
100.0%	1687	55.02%
0.0%	371	12.10%
50.0%	210	6.85%

- An analysis based on the Reporting Year of 2019 indicated that 55.02% of the students with non-completion status passed all the courses they were enrolled in. This indicates that more than half of the students who completed and passed all the enrolled courses did not pursue their qualification for reasons other than failed grades.

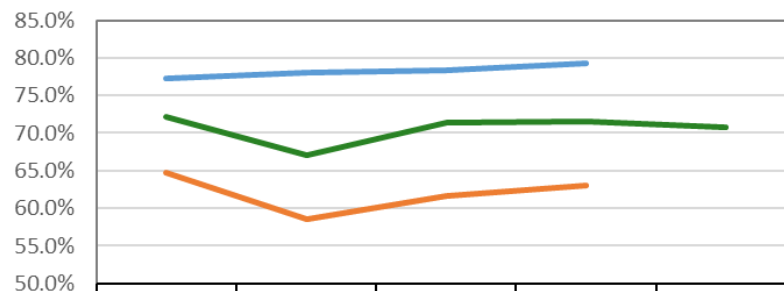
First Year Retention Rate in 2019 and Year Trends

First Year Retention Rate



Unitec Targets	2019	2020	2021	2022
First Year Retention	72.0%	73.0%	74.0%	75.0%

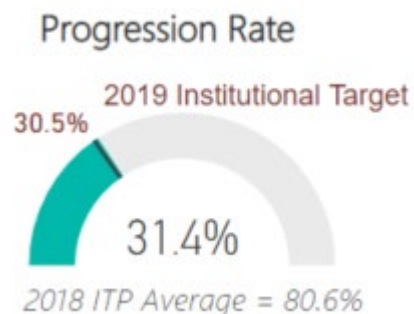
1st Year Retention Rate



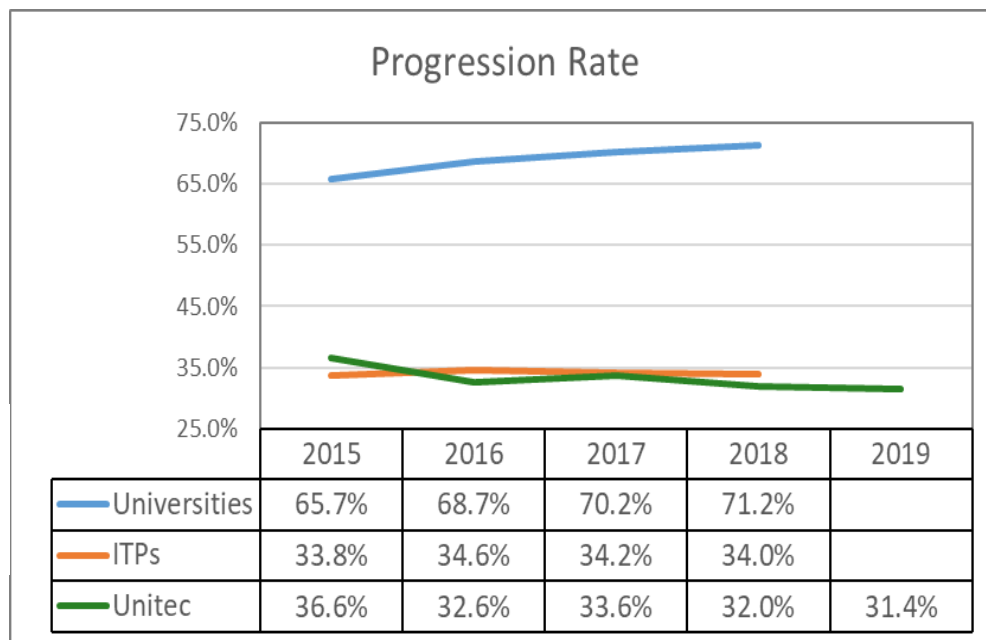
	2015	2016	2017	2018	2019
Universities	77.2%	78.1%	78.4%	79.3%	
ITPs	64.8%	58.6%	61.6%	63.1%	
Unitec	72.2%	67.1%	71.4%	71.6%	70.8%

- The First Year Retention Rate dropped by 0.8% from 2018 to 70.8% in 2019, falling short of the institutional target by 1.2%.
- In 2015-2019, while Unitec stayed well above the ITP sector benchmark in the range of 7-9%, its variance with the University sector increased from 5% in 2015 to 7.7% in 2019.

Progression Rate in 2019 and Year Trends



Unitec Targets	2019	2020	2021	2022
Progression	30.5%	31.0%	31.5%	32.0%

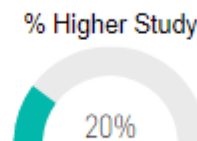
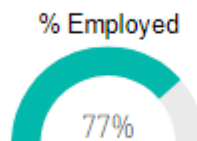
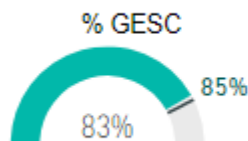


- Unitec achieved 31.4% in Level 1-4 Progression Rate in 2019, successfully meeting the institutional target.
- Except for 2015, Unitec consistently stayed below the ITP sector benchmark by 1-2% and is well below the University benchmark which has been rising over the years.

Unitec Graduate Outcomes

2020 Wave 1

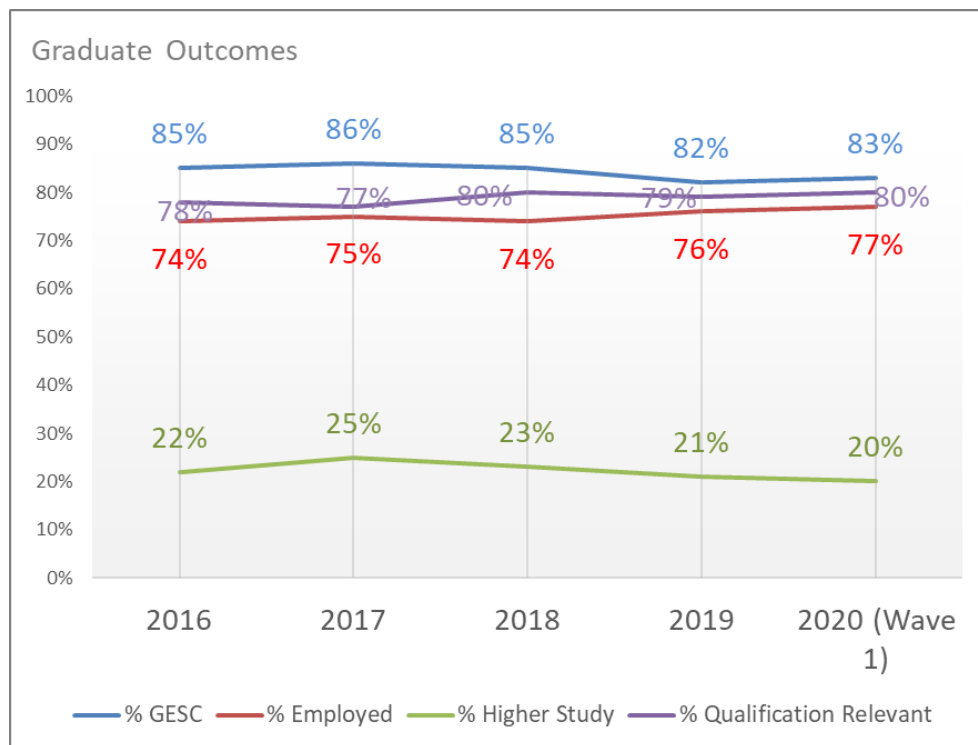
(This wave is for graduates who completed qualifications in Semester 1, 2019)



Unitec Targets	2019	2020	2021	2022
Employment/Further Study	85.0%	85.0%	85.0%	85.0%

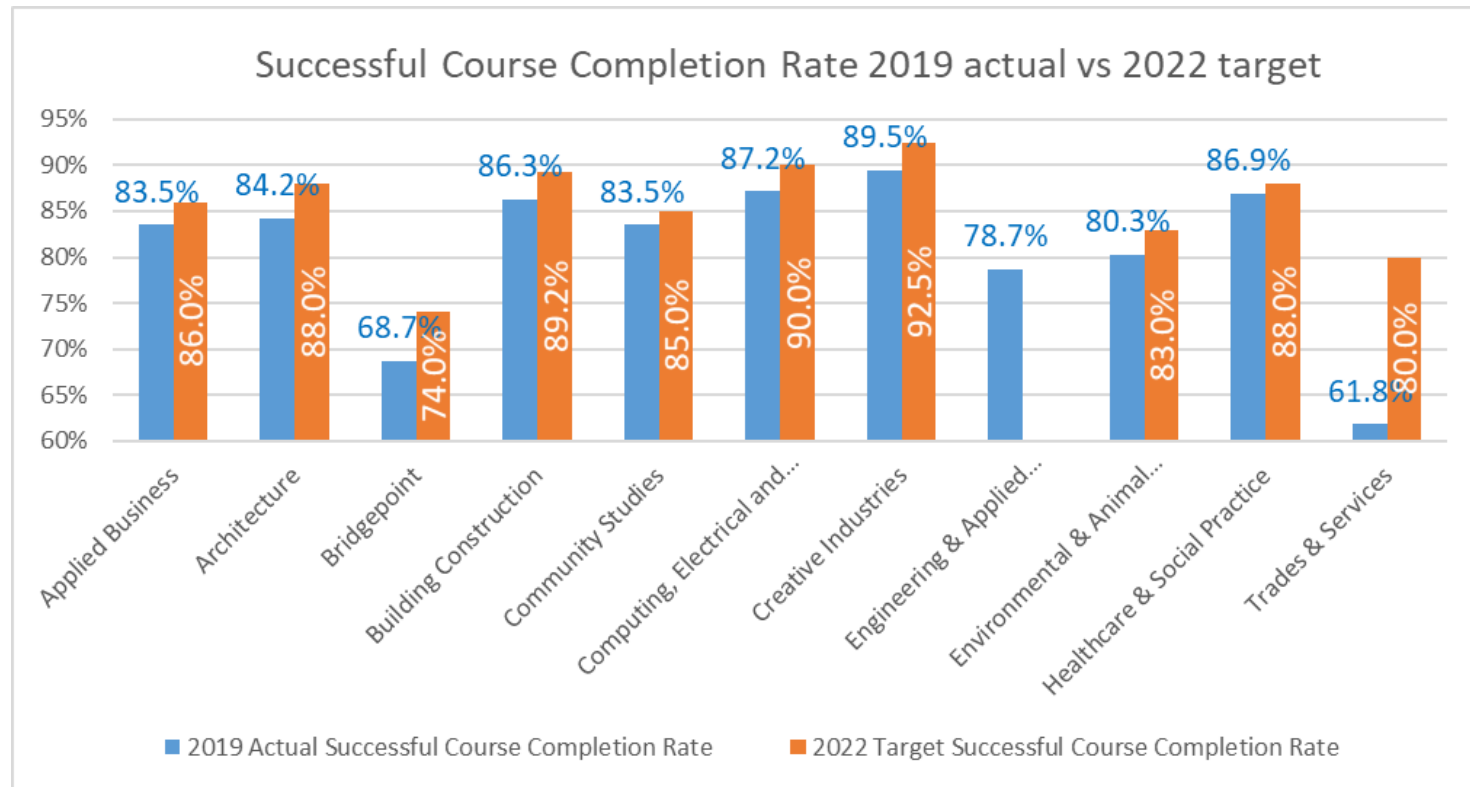
- While % Higher Study has shown a decreasing trend since 2017, the % employed fluctuated slightly between 78% and 80% in the 5-year period.
- This combined to generate a similar pattern in % GESC (% of graduates in employment or further study) – slightly downward trend since 2017, bouncing back by 1% from 2018 to 2019 fuelled by a 1% increase in % employed.
- The % GESC is yet to meet the institutional target, pending results from the second wave.

Nb: Response rates are detailed at the end of this report.



Schools

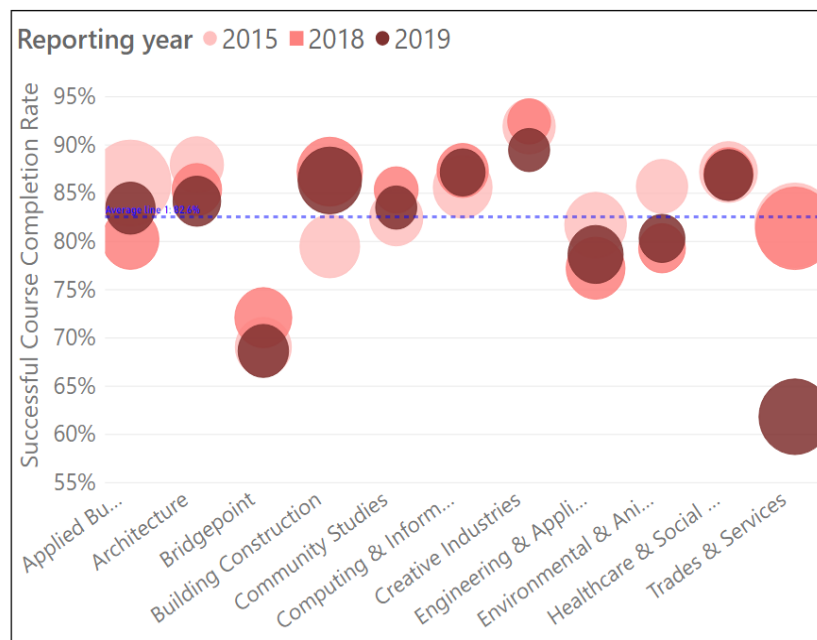
Successful Course Completion Rate by School – 2019 Actual vs 2022 Target



Year Trends - Successful Course Completion Rate by School

All colour coding is based off the 2022 institutional targets

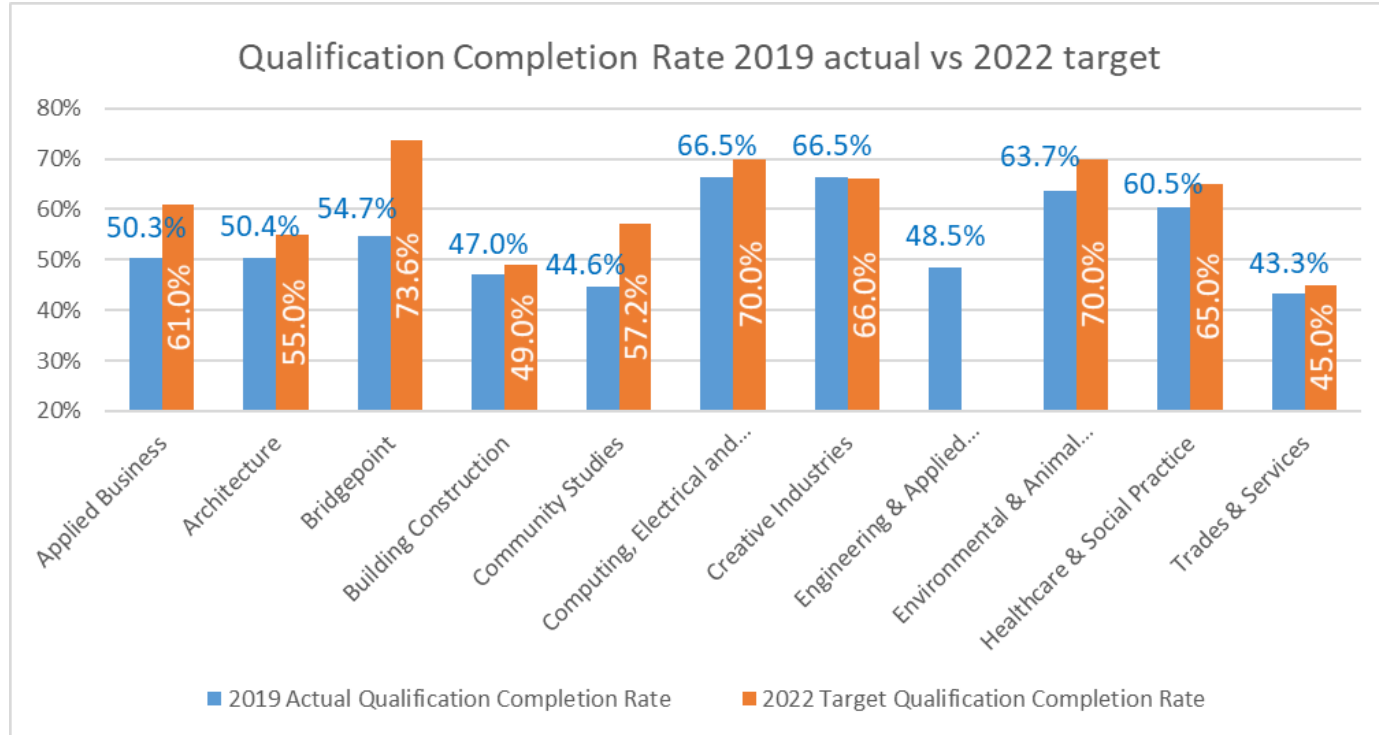
>10% below target
0-10% below target
0-10% above target
>10% above target



School	2015	2016	2017	2018	2019	Grand Total	Student Headcount	EFTS
Applied Business	86.1%	86.2%	84.6%	80.2%	83.5%	84.7%	917	499.6
Architecture	88.0%	83.5%	84.9%	85.4%	84.2%	85.3%	693	547.4
Bridgepoint	69.1%	75.8%	74.1%	72.1%	68.7%	72.0%	903	487.7
Building Construction	79.5%	82.9%	84.9%	87.2%	86.3%	84.4%	1233	843.2
Community Studies	82.5%	83.7%	85.9%	85.3%	83.5%	84.0%	372	268.6
Computing & Information Technology	85.6%	84.8%	87.6%	87.4%	87.2%	86.3%	567	389.6
Creative Industries	91.9%	91.5%	91.0%	92.4%	89.5%	91.4%	399	364.1
Engineering & Applied Technology	81.7%	80.0%	79.8%	77.2%	78.7%	79.6%	904	618.7
Environmental & Animal Sciences	85.7%	84.6%	81.5%	79.3%	80.3%	82.4%	445	345.4
Healthcare & Social Practice	87.2%	86.5%	85.6%	87.0%	86.9%	86.7%	695	529.1
Trades & Services	81.7%	81.6%	78.9%	81.4%	61.8%	78.1%	1081	656.4
Grand Total	83.5%	83.5%	83.5%	83.0%	80.4%	82.9%	8209	5549.7

- In both the 2-year and 5-year periods, Trades & Services saw a significant drop of nearly 20%. Similarly, Creative Industries which is the highest performer, saw a drop in both periods.
- Healthcare & Social Practice remained a high performer and had a stable performance throughout.
- Engineering & Applied Technology is the second lowest performer, performing well below the institute target of 85%. Building Construction started with the same rate as Engineering & Applied Technology but had successively improved to an above target performance.

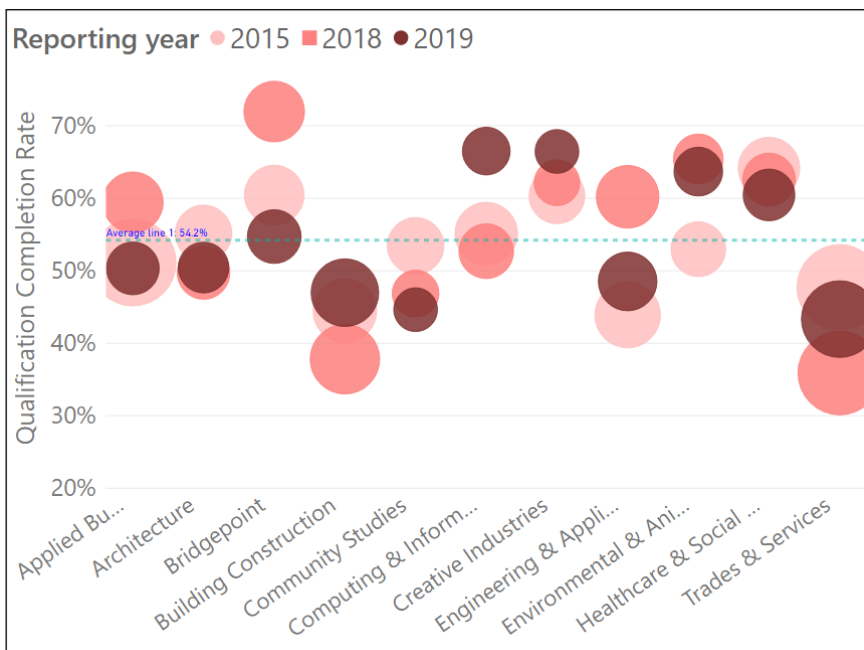
Qualification Completion Rate by School – 2019 Actual vs 2022 Target



Year trends – Qualification Completion Rate by School

All colour coding is based off the 2022 institutional targets

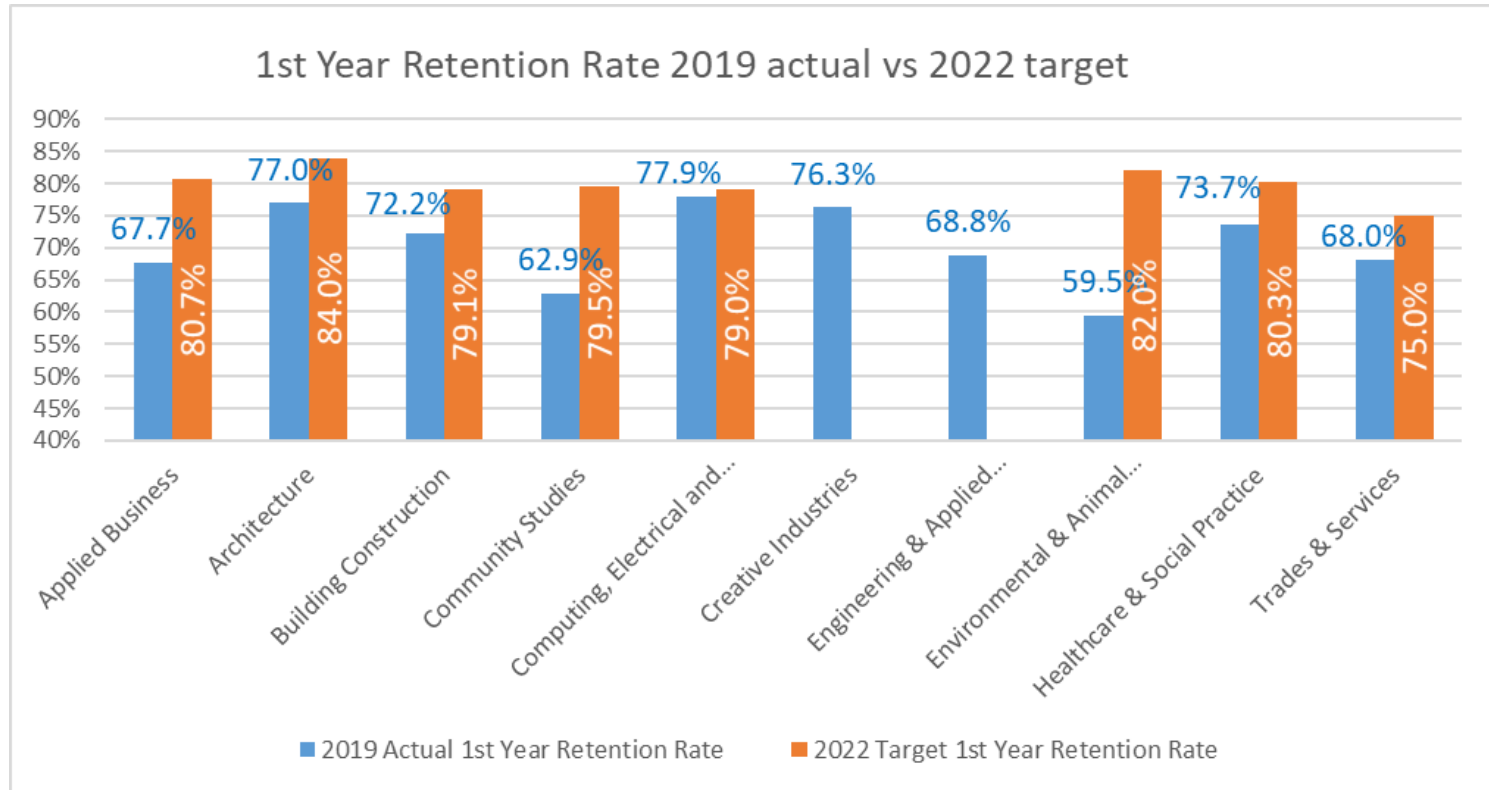
>10% below target
0-10% below target
0-10% above target
>10% above target



School	2015	2016	2017	2018	2019	Grand Total	Student Headcount	EFTS
Applied Business	51.1%	54.2%	64.8%	59.4%	50.3%	55.7%	917	499.6
Architecture	55.1%	48.0%	47.0%	49.7%	50.4%	49.8%	693	547.4
Bridgepoint	60.4%	58.3%	66.4%	72.0%	54.7%	61.5%	903	487.7
Building Construction	44.5%	39.5%	41.4%	37.8%	47.0%	42.2%	1233	843.2
Community Studies	53.4%	56.8%	48.2%	46.9%	44.6%	50.3%	372	268.6
Computing & Information Technology	55.1%	52.5%	58.1%	52.7%	66.5%	56.7%	567	389.6
Creative Industries	60.3%	57.7%	67.3%	62.1%	66.5%	62.4%	399	364.1
Engineering & Applied Technology	43.9%	50.3%	61.6%	60.2%	48.5%	52.7%	904	618.7
Environmental & Animal Sciences	53.0%	62.3%	65.8%	65.4%	63.7%	61.9%	445	345.4
Healthcare & Social Practice	64.2%	58.2%	64.1%	62.6%	60.5%	62.0%	695	529.1
Trades & Services	47.7%	45.0%	44.3%	35.9%	43.3%	43.3%	1081	656.4
Grand Total	55.3%	54.2%	58.4%	54.9%	52.8%	55.1%	8209	5549.7

- Building Construction and Trades and Services that had the largest student size are among the lowest performers despite a rise of 9.2% and 7.4% respectively from 2018 to 2019.
- Engineering and Applied Technology, also with a relatively large student size, dropped by 11.7%. Community Studies has steadily dropped over the 5-year period.
- Though Computing and Information Technology saw the largest increase in 2015-2019, its impact is lessened by a relatively small student size.

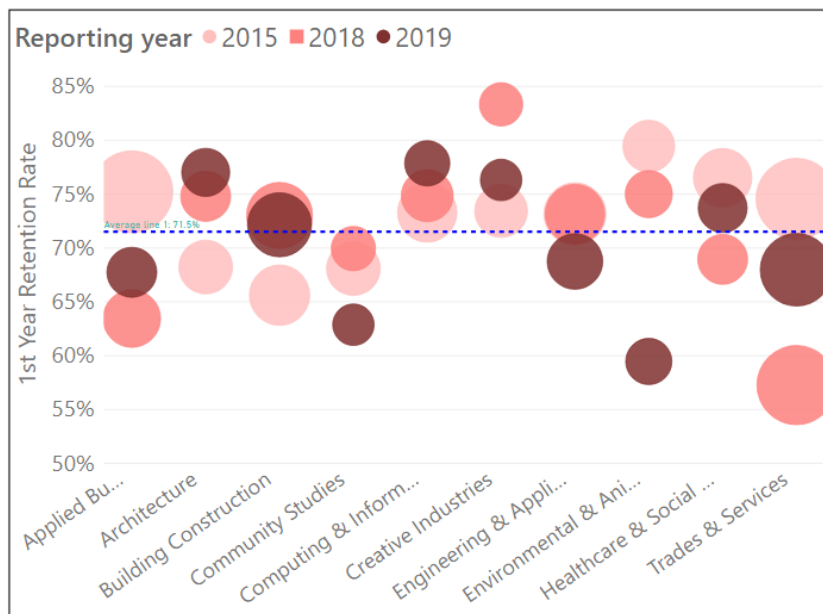
First Year Retention Rate by School – 2019 Actual vs 2022 Target



Year Trends – First Year Retention Rate by School

All colour coding is based off the 2022 institutional targets

■ >10% below target
 ■ 0-10% below target
 ■ 0-10% above target
 ■ >10% above target

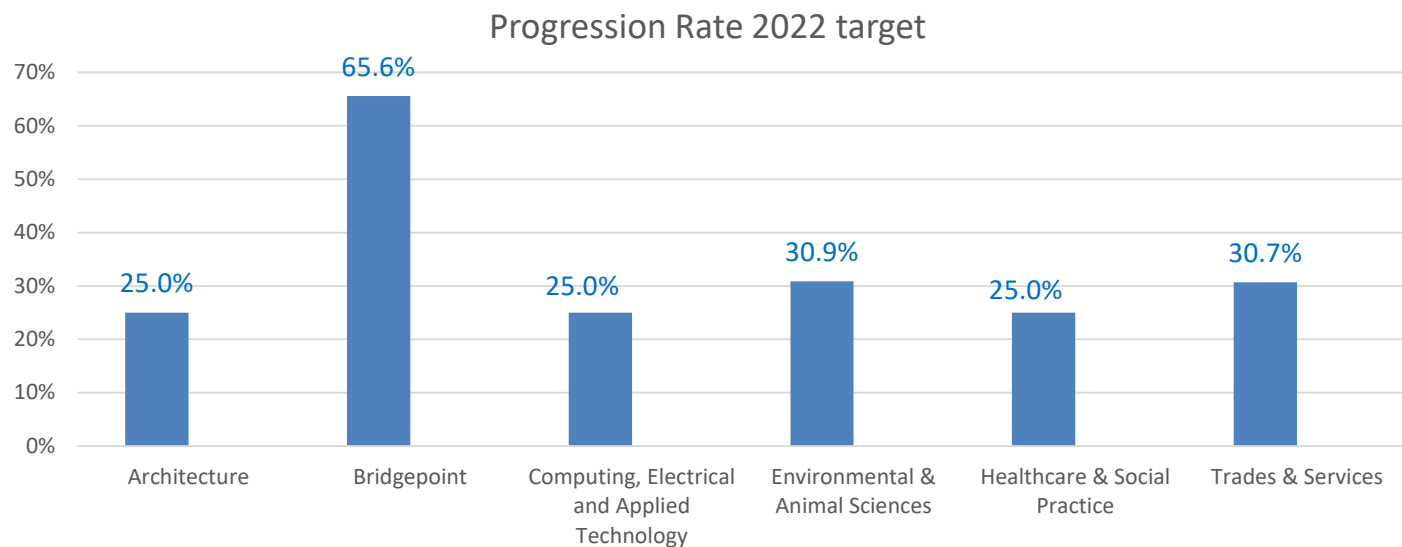


School	2015	2016	2017	2018	2019	Grand Total	Student Headcount	EFTS
Applied Business	75.2%	68.8%	78.2%	63.4%	67.7%	72.3%	917	499.6
Architecture	68.2%	61.6%	75.7%	74.8%	77.0%	70.5%	693	547.4
Bridgepoint	64.3%	71.4%	91.7%	100.0%	0.0%	66.7%	903	487.7
Building Construction	65.6%	64.8%	73.3%	73.0%	72.2%	70.1%	1233	843.2
Community Studies	68.1%	64.7%	57.9%	69.9%	62.9%	64.9%	372	268.6
Computing & Information Technology	73.3%	72.2%	72.9%	74.9%	77.9%	73.9%	567	389.6
Creative Industries	73.4%	79.5%	70.3%	83.3%	76.3%	76.4%	399	364.1
Engineering & Applied Technology	73.2%	71.4%	64.6%	73.2%	68.8%	70.3%	904	618.7
Environmental & Animal Sciences	79.5%	60.0%	62.5%	75.0%	59.5%	68.9%	445	345.4
Healthcare & Social Practice	76.5%	71.7%	78.4%	68.9%	73.7%	74.2%	695	529.1
Trades & Services	74.6%	44.1%	63.4%	57.3%	68.0%	60.9%	1081	656.4
Grand Total	72.2%	67.1%	71.4%	71.6%	70.8%	70.5%	8209	5549.7

2018-2019 – Trades & Services has shown the largest increase and impact with its relatively large student size. This has, however, been offset by decreases in Environmental & Animal Sciences, Community Studies and Engineering and Applied Technology. Creative Industries also saw a drop, but still remained the highest of all schools.

2015-2019 – Environmental & Animal Sciences experienced the biggest drop from 2015 to 2019 and fluctuated the greatest during the 5-year period. Building Construction has seen a healthy increase and given its larger student size, had a favourable impact on the overall rate. Schools with a small student size like Creative Industries, Architecture and Computing & Information Technology performed better than Building Construction and Trades & Services. For Bridgepoint, it is advisable to wait till the next data refresh to understand its performance.

Progression Rate by School – 2022 Target



Progression rates are not yet available at School level. Targets are presented here for information.

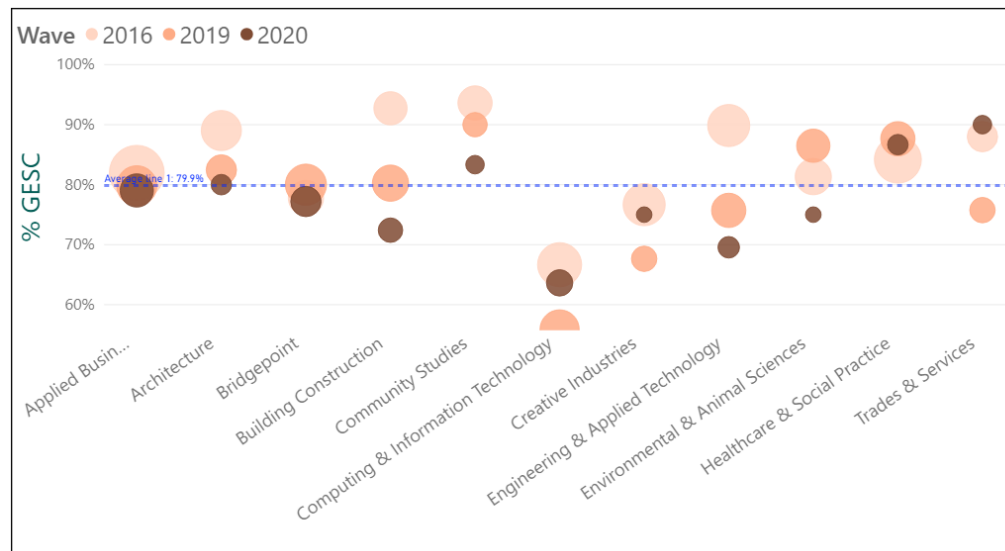
Year trends - % GESC by school

2019-2020

- Computing and Information Technology with its large student size and the lowest % GESC of all schools is a low performer.
- Trades and Services has shown the biggest increase but its relatively small size does not impact significantly on the overall rate.

2016-2020

- % GESC for all schools dropped except for Healthcare & Social Practice and Trades & Services but both schools have a relatively insignificant student size compared with Applied Business and Bridgepoint which have the largest impact on the overall Unitec rate but their % GESC have slightly decreased.

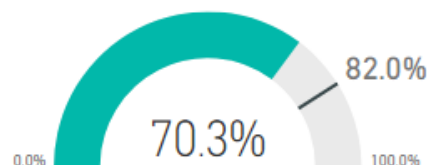


School	2016	2017	2018	2019	2020	5-year variance	2018-2019 variance
Applied Business	82.0%	83.0%	86.8%	79.8%	79.0%	-3.0%	-0.8%
Architecture	89.0%	80.9%	82.1%	82.5%	80.0%	-9.0%	-2.5%
Bridgepoint	77.8%	85.7%	79.2%	80.0%	77.2%	-0.6%	-2.8%
Building Construction	92.7%	90.7%	80.0%	80.2%	72.4%	-20.3%	-7.8%
Community Studies	93.6%	88.0%	93.6%	90.0%	83.3%	-10.3%	-6.7%
Computing & Information Technology	66.7%	67.1%	62.4%	55.9%	63.6%	-3.1%	7.7%
Creative Industries	76.7%	80.4%	78.3%	67.6%	75.0%	-1.7%	7.4%
Engineering & Applied Technology	89.9%	85.7%	78.1%	75.7%	69.6%	-20.3%	-6.1%
Environmental & Animal Sciences	81.3%	92.9%	87.1%	86.5%	75.0%	-6.3%	-11.5%
Healthcare & Social Practice	84.2%	84.3%	91.0%	87.7%	86.7%	2.5%	-1.0%
Trades & Services	88.0%	84.4%	86.7%	75.8%	90.0%	2.0%	14.2%

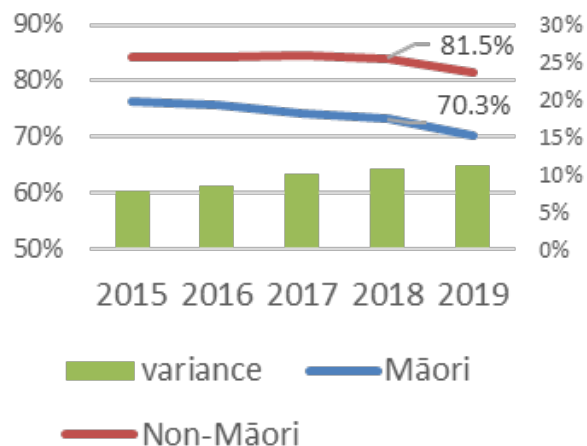
Māori

Māori Successful Course Completion Rate

SCC 2019 : Actual vs Target for Maori



Course Completion - Māori

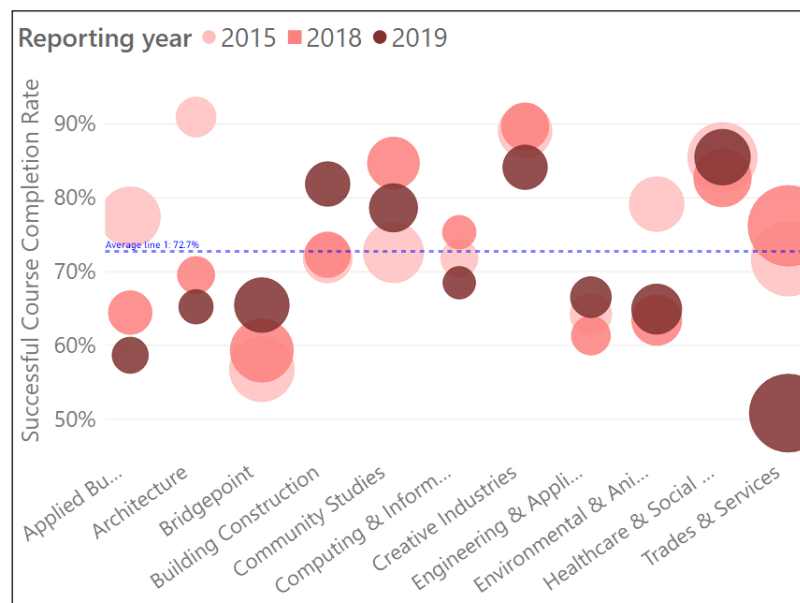


2018 SCC Benchmarks	Māori	Non-Māori	Variance
Unitec	73.3%	83.8%	10.5%
MIT	73.4%	81.6%	8.2%
AUT	81.2%	85.1%	3.9%
University of Auckland	85.3%	89.4%	4.1%
ITP Sector	71.8%	83.1%	11.3%

- The variance between Māori and non-Māori Course Completion Rate has increased steadily over the 5-year period.
- While Unitec was above the ITP sector in 2018, it has the lowest Course Completion Rate compared with its key counterparts in Auckland.

Māori Successful Course Completion by School and Year Trends

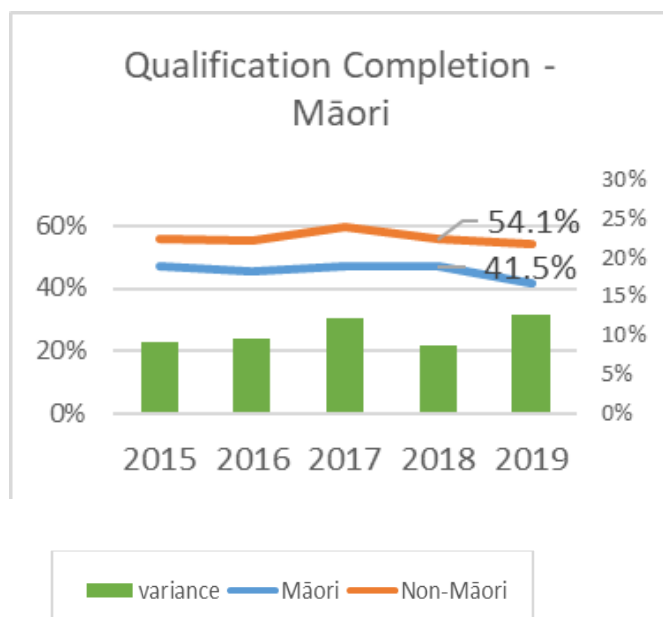
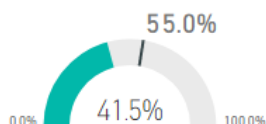
- Healthcare & Social Practice is the top performer throughout the years. Building Construction showed a favourable upward trend with the biggest jump of all the schools from 2018.
- Trade & Services experienced the biggest drop in 2015-2019. As it has the largest student size of all schools, it has consistently exerted a downward pull on the overall Māori Course Completion Rate.
- Both Architecture and Applied Business saw a continuous drop over the 5-year period but did not impact significantly on the overall rate given their relatively small student size especially in 2019.
- Bridgepoint started low in 2015 and since then has continuously edged up, but given its lower than average Course Completion Rates and its relatively large student size, it constituted a negative impact on the overall Māori performance.



School	2015	2016	2017	2018	2019	5-year variance	2018-2019 variance	Student Headcount	EFTS
Applied Business	77.4%	76.6%	73.2%	64.5%	58.7%	-18.7%	-5.8%	59	27.1
Architecture	90.9%	74.0%	72.4%	69.5%	65.2%	-25.7%	-4.3%	38	27.1
Bridgepoint	56.8%	60.8%	65.3%	59.3%	65.5%	8.7%	6.2%	107	55.7
Building Construction	71.8%	77.0%	81.8%	72.3%	81.9%	10.1%	9.6%	68	41.2
Community Studies	72.6%	82.5%	80.5%	84.7%	78.6%	6.0%	-6.1%	65	48.9
Computing & Information Technology	71.8%	61.7%	75.5%	75.3%	68.5%	-3.3%	-6.8%	26	17.6
Creative Industries	89.0%	89.0%	82.7%	89.7%	84.1%	-4.9%	-5.6%	53	50.9
Engineering & Applied Technology	64.2%	65.1%	64.8%	61.4%	66.6%	2.4%	5.2%	50	31.7
Environmental & Animal Sciences	79.1%	80.7%	69.0%	63.4%	64.9%	-14.2%	1.5%	65	46.0
Healthcare & Social Practice	85.5%	84.4%	83.1%	82.7%	85.5%	0.0%	2.8%	102	80.3
Trades & Services	71.7%	69.7%	65.8%	76.2%	50.8%	-20.9%	-25.4%	162	95.4
Grand Total	76.3%	75.8%	74.3%	73.3%	70.3%	-6.0%	-3.0%	789	521.9

Māori Qualification Completion Rate

QC 2019: Actual vs Target
for Maori

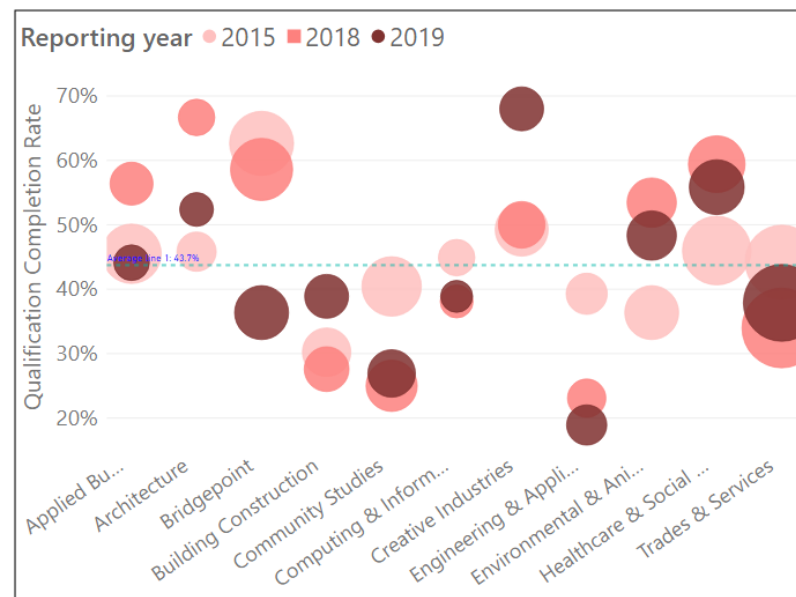


- While Unitec was above the ITP sector benchmark in 2018, it had the lowest Qualification Completion Rate compared with its key counterparts in Auckland.
- The gap between the Māori and non-Māori Qualification Completion Rates stood at 13.5% in 2019, the greatest of all years in the 5-year period.

2018 QC Benchmarks	Māori	Non-Māori	Variance
Unitec	47.1%	55.5%	8.4%
MIT	49.0%	54.6%	5.6%
AUT	53.1%	64.7%	11.6%
University of Auckland	59.2%	71.2%	12.0%
ITP Sector	49.3%	53.3%	4.0%

Māori Qualification Completion Rate by school and Year Trends

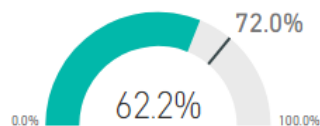
- Creative Industries led other schools with the highest Qualification Completion rate and increase over both the 2-year and 5-year periods.
- The overall Māori rate has however been negatively impacted by schools with a lower than average qualification rate and large student size such as Trades & Services and Bridgepoint.
- Building Construction showed a favourable increase over the 5 years but still its Qualification Completion Rate remained below average.



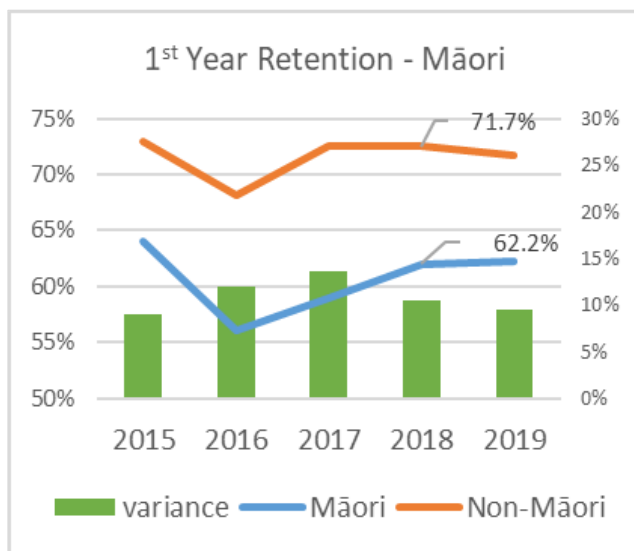
School	2015	2016	2017	2018	2019	5-year variance	2018-2019 variance	Student Headcount	EFTS
Applied Business	45.5%	48.0%	54.9%	56.4%	44.1%	-1.4%	-12.3%	59	27.1
Architecture	45.8%	52.6%	52.2%	66.7%	52.4%	6.6%	-14.3%	38	27.1
Bridgepoint	62.7%	55.8%	60.1%	58.6%	36.4%	-26.3%	-22.2%	107	55.7
Building Construction	30.2%	26.1%	26.9%	27.6%	38.9%	8.7%	11.3%	68	41.2
Community Studies	40.4%	43.3%	37.8%	25.0%	26.9%	-13.5%	1.9%	65	48.9
Computing & Information Technology	44.9%	28.6%	35.0%	38.1%	38.9%	-6.0%	0.8%	26	17.6
Creative Industries	49.3%	47.9%	54.8%	50.0%	68.0%	18.7%	18.0%	53	50.9
Engineering & Applied Technology	39.3%	43.5%	30.0%	23.1%	18.9%	-20.4%	-4.2%	50	31.7
Environmental & Animal Sciences	36.4%	51.4%	56.5%	53.4%	48.3%	11.9%	-5.1%	65	46.0
Healthcare & Social Practice	46.0%	51.6%	56.7%	59.4%	55.8%	9.8%	-3.6%	102	80.3
Trades & Services	44.3%	36.2%	33.3%	34.0%	37.9%	-6.4%	3.9%	162	95.4
Grand Total	47.1%	45.5%	47.4%	47.1%	41.5%	-5.6%	-5.6%	789	521.9

Māori First Year Completion Rate

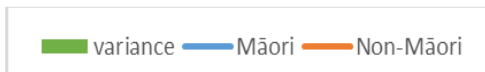
: FYR 2019: Actual vs Target
for Maori



- In 2019, the Māori First Year Retention Rate slightly improved to narrow the gap between Māori and non-Māori performance.
- Unitec is still well below its key counterparts in Auckland in 2018, although it stays above the ITP sector benchmark.

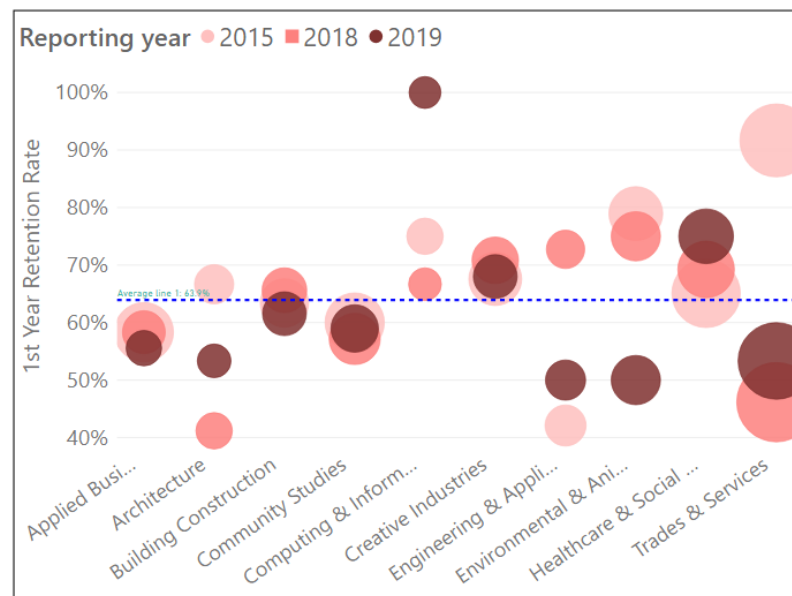


2018 FYR Benchmarks	Māori	Non-Māori	Variance
Unitec	62.0%	72.1%	10.1%
MIT	67.1%	68.4%	1.3%
AUT	75.7%	79.3%	3.6%
University of Auckland	78%	84.0%	6.0%
ITP Sector	56.2%	64.3%	8.1%



Māori First Year Retention Rate by school and Year Trends

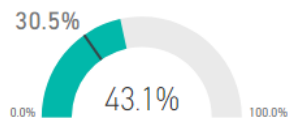
- In 2019, Computing & Information Technology secured the greatest increase in both the 2-year and 5-year periods to 100%.
- The largest drop over the 5-year period is Trades & Services, impacting significantly on the overall Pacific results, although the school improved by 7.1% in 2019 from 2018.
- Healthcare & Social Practice kept up its momentum throughout to become the top performer in 2019 with the second largest student size.
- Of concern are Environmental and Animal Sciences and Engineering & Applied Technology showing a noticeably large downturn of 22.7% and 25% respectively.



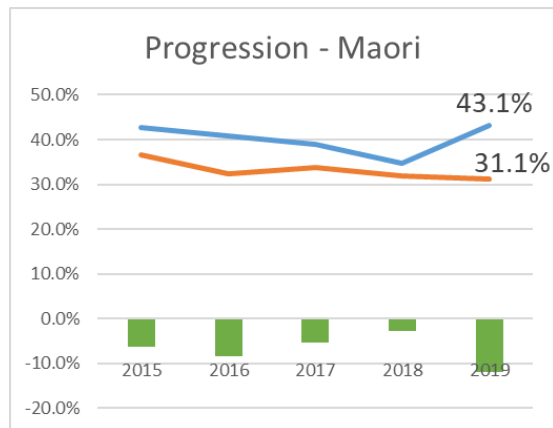
School	2015	2016	2017	2018	2019	5-year variance	2018-2019 variance	Student Headcount	EFTS
Applied Business	45.5%	48.0%	54.9%	56.4%	44.1%	-1.4%	-12.3%	59	27.1
Architecture	45.8%	52.6%	52.2%	66.7%	52.4%	6.6%	-14.3%	38	27.1
Bridgepoint	62.7%	55.8%	60.1%	58.6%	36.4%	-26.3%	-22.2%	107	55.7
Building Construction	30.2%	26.1%	26.9%	27.6%	38.9%	8.7%	11.3%	68	41.2
Community Studies	40.4%	43.3%	37.8%	25.0%	26.9%	-13.5%	1.9%	65	48.9
Computing & Information Technology	44.9%	28.6%	35.0%	38.1%	38.9%	-6.0%	0.8%	26	17.6
Creative Industries	49.3%	47.9%	54.8%	50.0%	68.0%	18.7%	18.0%	53	50.9
Engineering & Applied Technology	39.3%	43.5%	30.0%	23.1%	18.9%	-20.4%	-4.2%	50	31.7
Environmental & Animal Sciences	36.4%	51.4%	56.5%	53.4%	48.3%	11.9%	-5.1%	65	46.0
Healthcare & Social Practice	46.0%	51.6%	56.7%	59.4%	55.8%	9.8%	-3.6%	102	80.3
Trades & Services	44.3%	36.2%	33.3%	34.0%	37.9%	-6.4%	3.9%	162	95.4
Grand Total	47.1%	45.5%	47.4%	47.1%	41.5%	-5.6%	-5.6%	789	521.9

Māori Progression Rate

PR 2019: Maori Actual vs Institutional Target



- 2019 Progression Rate is the only measure that met the target set for Māori, reaching to 43.1% or 12.5% higher than the target.
- The Progression Rate is also the only measure that is consistently higher than the that for non-Māori over the 5-year period, with this reversed for the other three measures.



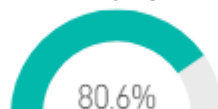
2018 Progression Benchmarks	Māori	Non-Māori	Variance
Unitec	34.7%	31.7%	10.1%
MIT	37.9%	37.0%	1.3%
AUT	82.7%	88.0%	3.6%
University of Auckland	91.7%	89.7%	6.0%
ITP Sector	35.9%	33.3%	8.1%

Māori Graduate Outcomes

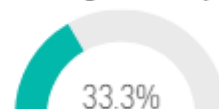
% Graduates
Employed,
Studying or
Combining (GESC)



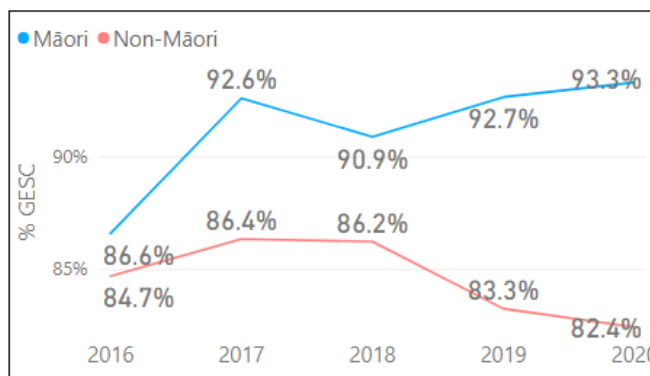
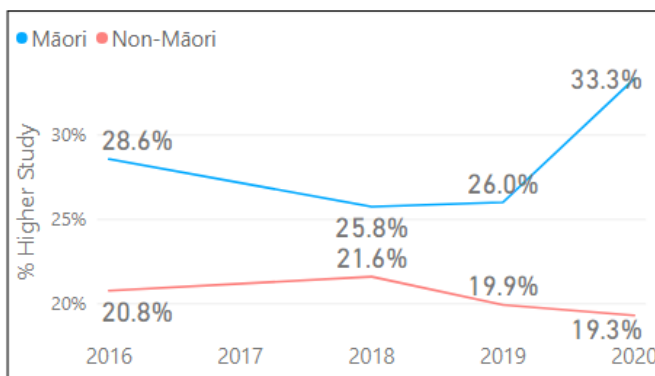
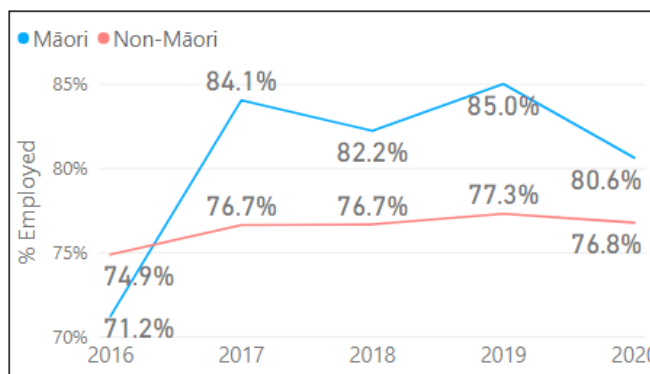
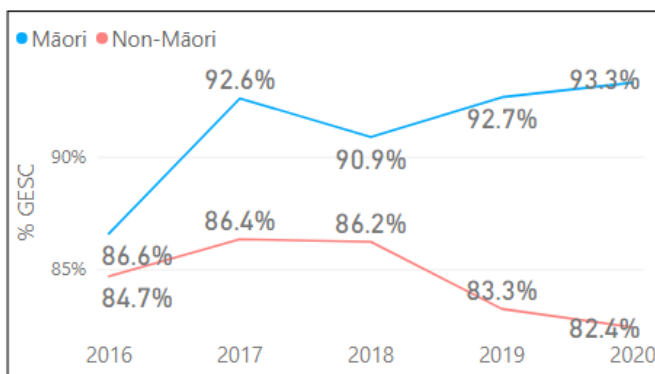
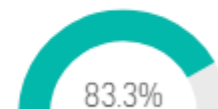
% Employed



% Higher Study



% Qualification Relevant...

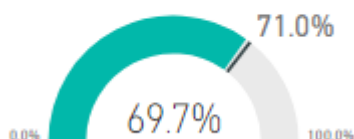


- % GESC for Māori continued to stay high in 2019, mainly driven by % in Higher Study as % Employed dropped by 4% from 2018 to 2019.

Pacific

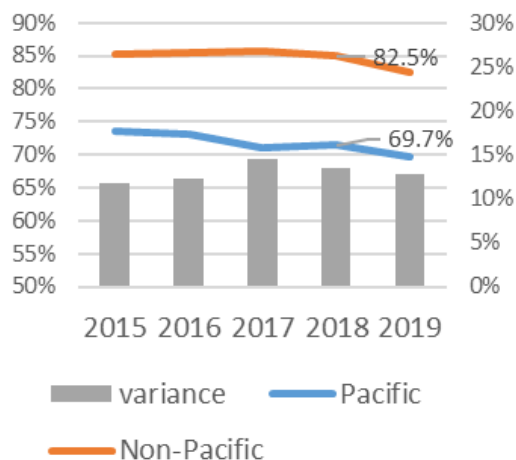
Pacific Successful Course Completion Rate in 2019 and Year Trends

SCC 2019 : Actual vs Target for Pacific



- In 2019, the Pacific Successful Course Completion Rate continued to stay well below its non-Pacific Course Completion Rate, though the variance has decreased since its peak in 2017.
- In 2018, the Pacific Successful Course Completion Rate was below the ITP sector benchmark and those of its key counterparts except Auckland University of Technology.

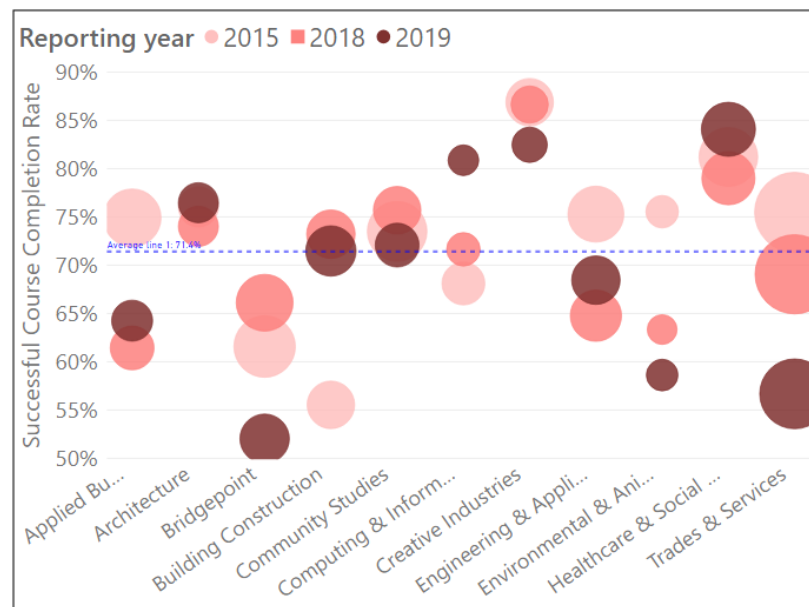
Course Completion - Pacific



2018 SCC Benchmarks	Pacific	Non-Pacific	variance
Unitec	71.5%	84.8%	13.3%
MIT	73.3%	83.8%	10.5%
AUT	69.5%	87.8%	18.3%
University of Auckland	75.5%	90.7%	15.2%
ITP Sector	72.3%	81.7%	9.4%

Pacific Successful Course Completion Rate by School and Year Trends

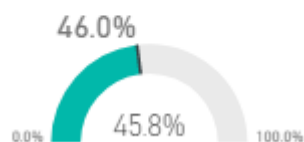
- The school performance pattern almost repeats that for Māori Successful Course Completion Rate.
- Healthcare & Social Practice is the top performer throughout the years. Building Construction showed a favourable upward trend with the biggest jump of all the schools from 2018. Computing also saw an encouraging increase but its impact is relatively insignificant given its small student size.
- Trades & Services experienced the biggest drop in 2015-2019, exerting a significant downward pull on the overall rate.
- Applied Business saw a huge drop of more than 10% over the 5-year period but did not impact significantly on the overall rate given their relatively small student size in 2019.
- Bridgepoint also dropped significantly from 2018, creating a negative impact on the overall Institute performance.



School	2015	2016	2017	2018	2019	5-year variance	2018-2019 variance	Student Headcount	EFTS
Applied Business	74.9%	72.6%	67.5%	61.4%	64.3%	-10.6%	2.9%	129	73.3
Architecture	76.0%	69.8%	67.8%	74.0%	76.5%	0.5%	2.5%	98	77.9
Bridgepoint	61.6%	68.4%	66.5%	66.1%	52.0%	-9.6%	-14.1%	170	92.8
Building Construction	55.5%	62.3%	66.5%	73.2%	71.5%	16.0%	-1.7%	160	112.4
Community Studies	73.5%	73.3%	81.5%	75.7%	72.1%	-1.4%	-3.6%	101	74.3
Computing & Information Technology	68.1%	70.2%	72.5%	71.6%	80.9%	12.8%	9.3%	41	27.8
Creative Industries	86.9%	83.3%	80.8%	86.6%	82.5%	-4.4%	-4.1%	60	53.2
Engineering & Applied Technology	75.3%	73.1%	69.5%	64.8%	68.5%	-6.8%	3.7%	151	100.0
Environmental & Animal Sciences	75.5%	64.3%	56.6%	63.3%	58.6%	-16.9%	-4.7%	32	24.1
Healthcare & Social Practice	81.2%	79.8%	77.1%	79.0%	84.1%	2.9%	5.1%	195	148.0
Trades & Services	75.5%	74.9%	66.1%	69.1%	56.7%	-18.8%	-12.4%	215	127.2
Grand Total	73.5%	73.2%	71.1%	71.5%	69.7%	-3.8%	-1.8%	1331	911.0

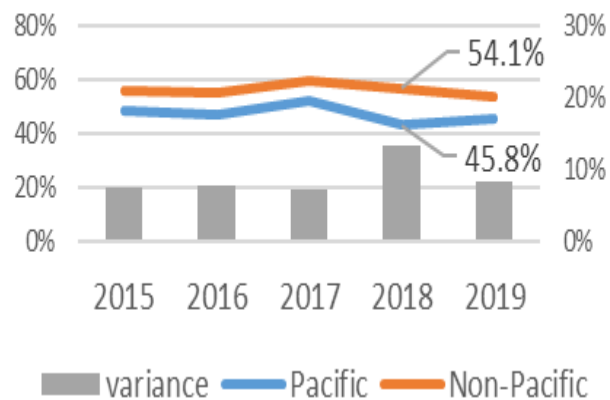
Pacific Qualification Completion Rate in 2019 and Year Trends

QC 2019: Actual vs Target for Pacific



- The gap between the Pacific and non-Pacific Qualification Completion Rates in 2019 narrowed to almost the 2017 level.
- However, Unitec performed poorly in 2018 as its Pacific Qualification Completion Rate was below the ITP sector benchmark and its Auckland counterparts.

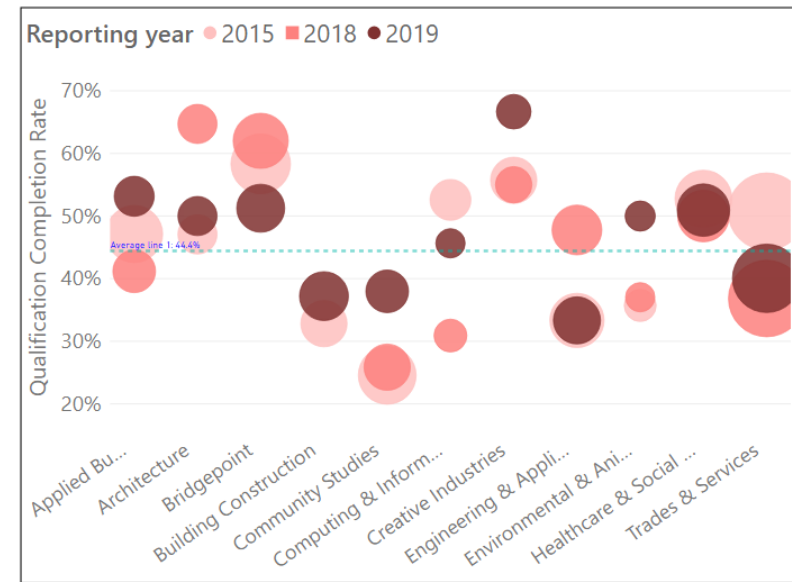
Qualification Completion - Pacific



2018 QC Benchmarks	Pacific	Non-Pacific	variance
Unitec	43.5%	56.6%	13.1%
MIT	51.8%	54.5%	2.7%
AUT	48.4%	66.2%	17.8%
University of Auckland	55.6%	72.1%	16.5%
ITP Sector	48.5%	52.8%	4.3%

Pacific Qualification Completion Rate by School and Year Trends

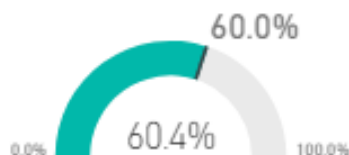
- Trades & Services had slightly below average performance in 2019. Given its huge student size, lifting the rate for the school should push up the Institute rate well.
- Creative Industries and Environmental Sciences both achieved a 2-digit increase from 2018 to 2019.
- Bridgepoint performed relatively well which is the opposite of its performance in course completion.
- Engineering & Applied Technology and Architecture saw a large drop of 14.5% and 14.7% respectively from 2018 to 2019, back to their lacklustre 2015 performance.
- Healthcare and Social Practice continued to be a robust performer, impacting favourably on the overall Pacific Qualification Completion Rate given its relatively large student size.



School	2015	2016	2017	2018	2019	5-year variance	2018-2019 variance	Student Headcount	EFTS
Applied Business	47.1%	49.5%	47.4%	41.2%	53.2%	6.1%	12.0%	129	73.3
Architecture	47.1%	40.9%	53.8%	64.7%	50.0%	2.9%	-14.7%	98	77.9
Bridgepoint	58.3%	58.5%	63.5%	62.0%	51.3%	-7.0%	-10.7%	170	92.8
Building Construction	32.8%	26.0%	30.9%	7.7%	37.2%	4.4%	29.5%	160	112.4
Community Studies	24.6%	41.9%	40.5%	25.9%	38.0%	13.4%	12.1%	101	74.3
Computing & Information Technology	52.6%	30.6%	48.2%	30.9%	45.7%	-6.9%	14.8%	41	27.8
Creative Industries	55.7%	58.1%	63.0%	55.0%	66.7%	11.0%	11.7%	60	53.2
Engineering & Applied Technology	33.3%	31.8%	54.3%	47.8%	33.3%	0.0%	-14.5%	151	100.0
Environmental & Animal Sciences	35.7%	44.4%	52.4%	37.0%	50.0%	14.3%	13.0%	32	24.1
Healthcare & Social Practice	52.8%	59.7%	49.5%	50.0%	50.9%	-1.9%	0.9%	195	148.0
Trades & Services	50.7%	46.7%	57.5%	36.8%	40.1%	-10.6%	3.3%	215	127.2
Grand Total	48.7%	47.4%	52.1%	43.5%	45.8%	-2.9%	2.3%	1331	911.0

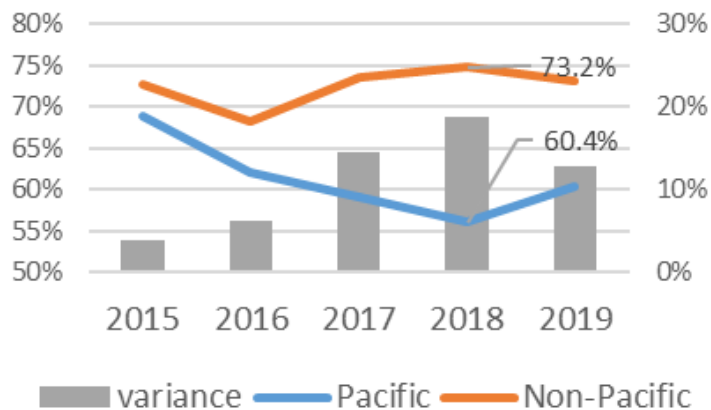
Pacific First Year Completion Rate - 2019 and year trends

FYR 2019: Actual vs Target for Pacific



- The variance between the Pacific and non-Pacific First Year Completion Rates has continuously increased from 2015 to 2018. In 2019, this gap decreased by 5.5% to 12.8%.
- However, similar to its performance in Qualification Completion Rate, the Unitec First Year Retention Rate was below the ITP sector benchmark and well below its key Auckland counterparts.

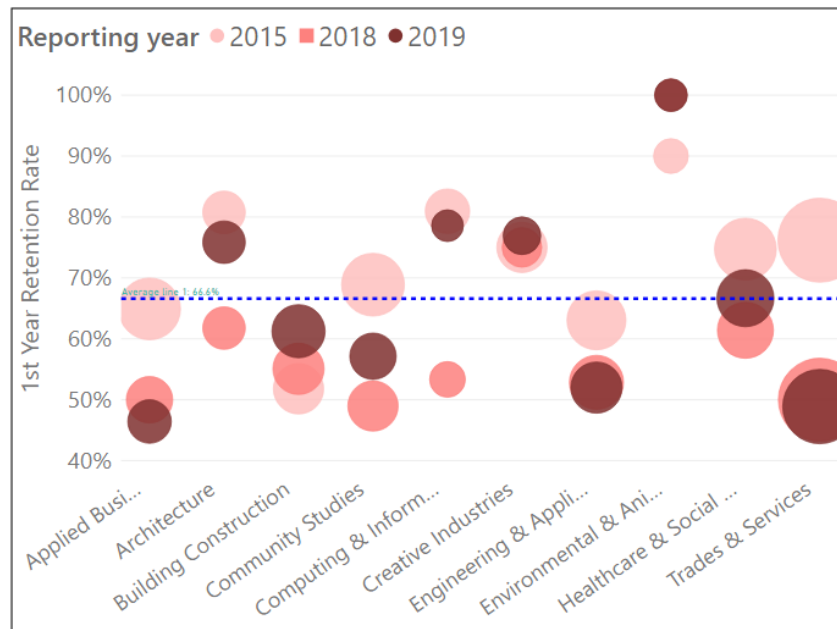
1st Year Retention - Pacific



2018 Retention Benchmarks	Pacific	Non-Pacific	variance
Unitec	56.0%	74.3%	18.3%
MIT	67.6%	68.6%	1.0%
AUT	68.8%	81.0%	12.2%
University of Auckland	80.4%	83.9%	3.5%
ITP Sector	58.7%	63.4%	4.7%

Pacific First Year Completion Rate by school and Year Trends

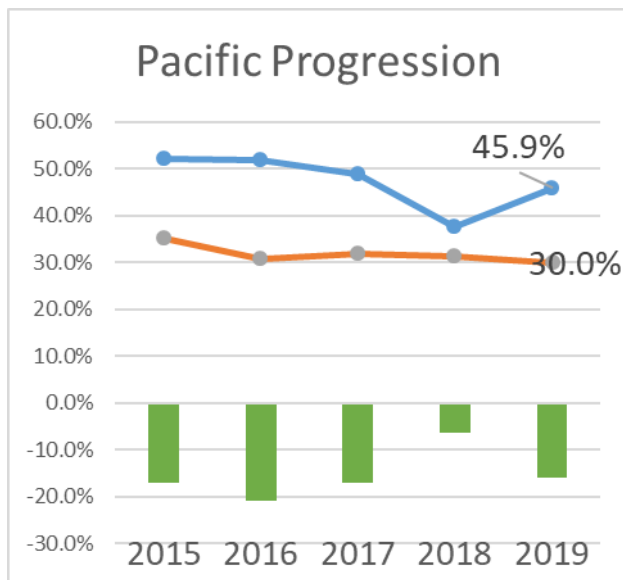
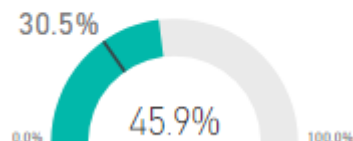
- Environmental & Animal Sciences had outstanding performance for 2 consecutive years in 2018 to 2019, achieving a 100% retention rate.
- Schools that performed above average had the smallest student size.
- Again, Trades & Services had below average performance in 2019, only second to Applied Business in below average performance. The latter, however, had a much smaller student size and so the negative impact is lessened.



School	2015	2016	2017	2018	2019	5-year variance	2018-2019 variance	Student Headcount	EFTS
Applied Business	64.9%	62.9%	56.1%	50.0%	46.4%	-18.5%	-3.6%	129	73.3
Architecture	80.8%	79.1%	60.0%	61.8%	75.9%	-4.9%	14.1%	98	77.9
Bridgepoint	0.0%	0.0%	NA	NA	NA	NA	NA	170	92.8
Building Construction	51.8%	48.6%	60.0%	55.1%	61.3%	9.5%	6.2%	160	112.4
Community Studies	68.9%	62.0%	46.8%	49.0%	57.1%	-11.8%	8.1%	101	74.3
Computing & Information Technology	81.0%	73.1%	52.6%	53.3%	78.6%	-2.4%	25.3%	41	27.8
Creative Industries	75.0%	83.7%	62.5%	75.0%	76.9%	1.9%	1.9%	60	53.2
Engineering & Applied Technology	63.0%	66.3%	60.0%	52.9%	52.0%	-11.0%	-0.9%	151	100.0
Environmental & Animal Sciences	90.0%	62.5%	66.7%	100.0%	100.0%	10.0%	0.0%	32	24.1
Healthcare & Social Practice	74.7%	64.8%	73.1%	61.4%	66.7%	-8.0%	5.3%	195	148.0
Trades & Services	76.2%	28.0%	52.9%	50.0%	48.9%	-27.3%	-1.1%	215	127.2
Grand Total	68.8%	62.0%	59.1%	56.0%	60.4%	-8.4%	4.4%	1331	911.0

Pacific Progression Rate in 2019 and Year Trends

PR 2019: Pacific Actual vs Institutional Target

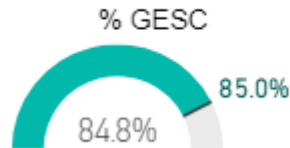


- Similar to the Māori pattern, the 2019 Progression Rate is the only measure for Pacific that met the target set for the priority group, reaching to 45.9% or 15.4% higher than the target.
- The Progression Rate is also the only measure that is consistently higher than that for non-Pacific over the 5-year period, with this reversed for the other three measures.
- However, the Pacific Progression Rate is still lower than the ITP sector benchmark and that achieved by its key Auckland counterparts.

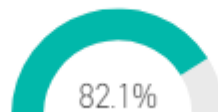
2018 Progression Benchmarks	Pacific	Non-Pacific	variance
Unitec	37.6%	30.8%	-6.8%
MIT	41.6%	34.7%	-6.9%
AUT	88.7%	86.8%	-1.9%
University of Auckland	93.2%	88.9%	-4.3%
ITP Sector	38.6%	33.6%	-5.0%

Pacific Graduate Outcomes

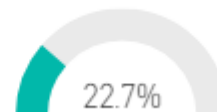
% Graduates
Employed,
Studying or
Combining (GESC)



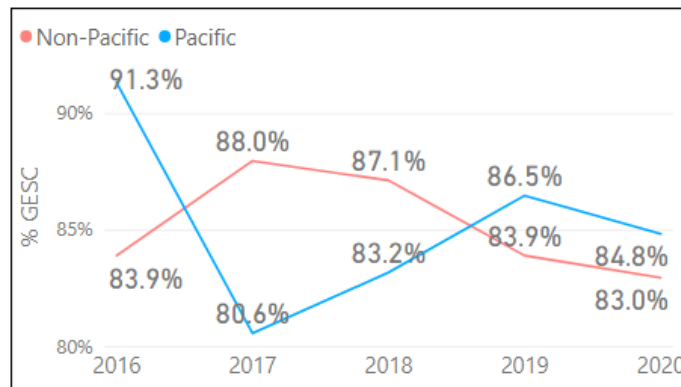
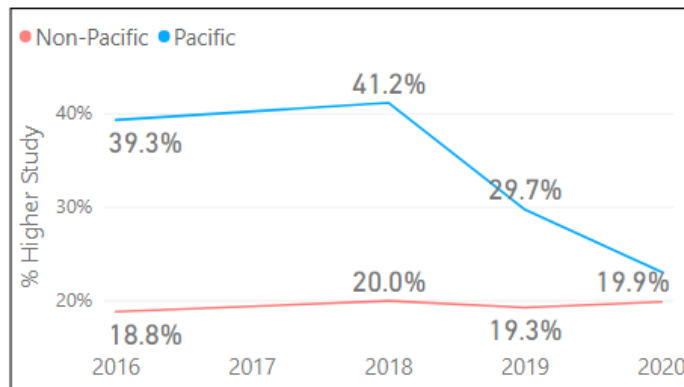
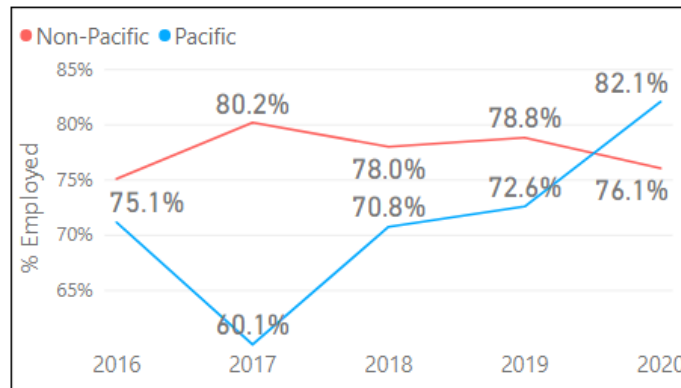
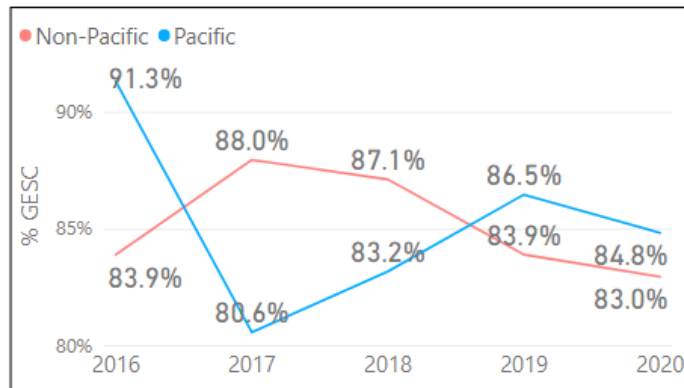
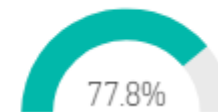
% Employed



% Higher Study



% Qualification Relevant...

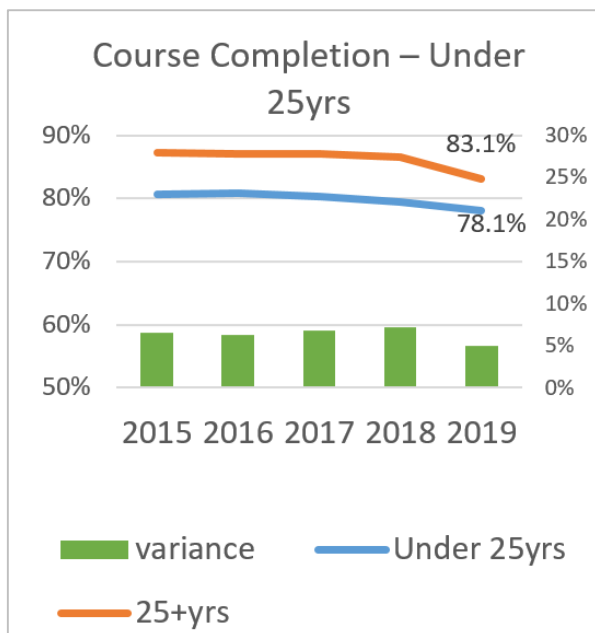
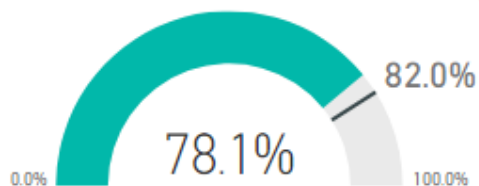


- In 2020, % Employed for Pacific went up substantially by 9%.
- This was offset by a 10% reduction in % Higher Study, giving an overall 1% drop in % GESC.
- The variance between the Pacific and non-Pacific % Qualification Relevant to Employment continued to narrow to only 2% in 2020, almost back to the 2016 level.

Under 25yrs

Under 25yrs Successful Course Completion Rate in 2019 and Year Trends

SCC 2019 for Under 25yrs: Actual vs Institutional Target

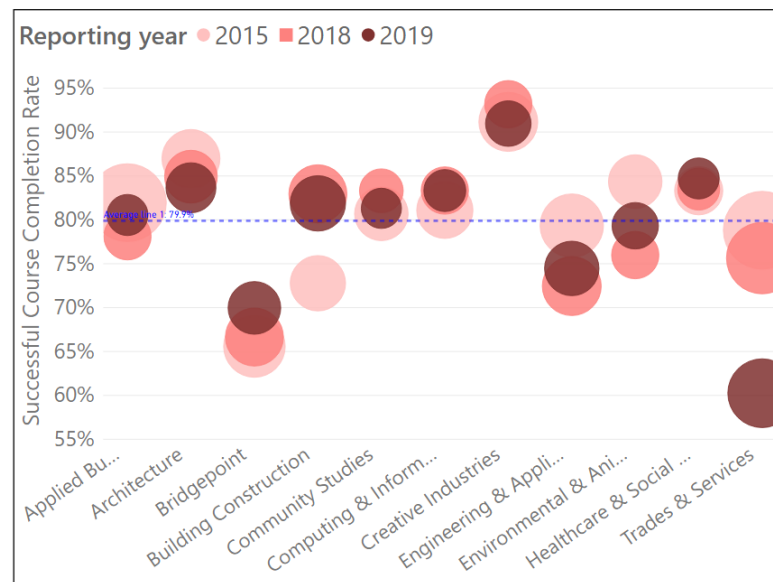


- In 2019, Unitec's Under 25yrs Successful Course Completion Rate edged down slightly from 2018 but with a greater fall for 25+yrs, the variance has dwindled to 5%.
- In 2018, the Pacific Successful Course Completion Rate was below the ITP sector benchmark and those of its key counterparts except Manukau Institute of Technology.

2018 SCC Benchmarks	Under 25yrs	25+yrs	variance
Unitec	79.4%	86.6%	7.2%
MIT	76.5%	85.3%	8.8%
AUT	84.0%	88.1%	4.1%
University of Auckland	88.8%	91.9%	3.1%
ITP Sector	79.8%	82.1%	2.3%

Under 25yrs Successful Course Completion Rate by School and Year Trends

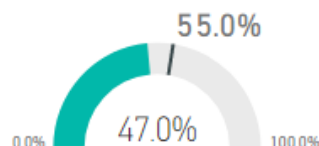
- Creative Industries led other schools in each of the past 5 years.
- Building Construction kept a rising trend in 2015-2018. Although it levelled off since 2018 and dropped slightly in 2019, it still showed an above average performance and contributed favourably to the overall Unitec rate given its relatively large student size.
- Trades & Services again performed poorly with a significant drop of 15.4% from 2018 to 2019.
- In 2019, there are 7 schools with above average performance and only three low performing schools but the latter are those with the largest student size, hence weighing down the overall Unitec performance.



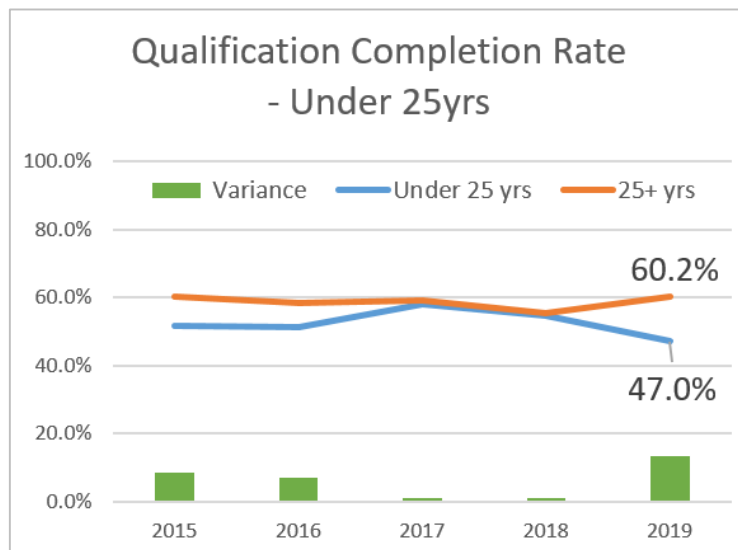
School	2015	2016	2017	2018	2019	5-year variance	2018-2019 variance	Student Headcount	EFTS
Applied Business	82.0%	83.2%	80.6%	78.1%	80.6%	-1.4%	2.5%	266	166.8
Architecture	87.0%	81.7%	83.1%	84.9%	83.7%	-3.3%	-1.2%	429	367.6
Bridgepoint	65.6%	74.1%	72.6%	66.6%	70.0%	4.4%	3.4%	549	306.1
Building Construction	72.8%	78.1%	79.5%	83.0%	81.9%	9.1%	-1.1%	509	384.7
Community Studies	80.7%	80.8%	84.6%	83.3%	81.3%	0.6%	-2.0%	211	157.3
Computing & Information Technology	81.1%	78.5%	84.7%	83.3%	83.3%	2.2%	0.0%	270	205.7
Creative Industries	91.2%	91.7%	92.2%	93.2%	91.0%	-0.2%	-2.2%	309	291.8
Engineering & Applied Technology	79.3%	76.0%	77.4%	72.5%	74.5%	-4.8%	2.0%	515	361.0
Environmental & Animal Sciences	84.4%	82.3%	78.0%	76.0%	79.3%	-5.1%	3.3%	281	224.1
Healthcare & Social Practice	83.3%	84.3%	82.3%	83.5%	84.7%	1.4%	1.2%	281	208.9
Trades & Services	78.8%	77.9%	69.8%	75.6%	60.2%	-18.6%	-15.4%	610	382.7
Grand Total	80.7%	80.8%	80.3%	79.4%	78.1%	-2.6%	-1.3%	4165	3056.8

Under 25yrs Qualification Completion Rate in 2019 and Year Trends

QC 2019 for Under 25yrs: Actual vs Institutional Target



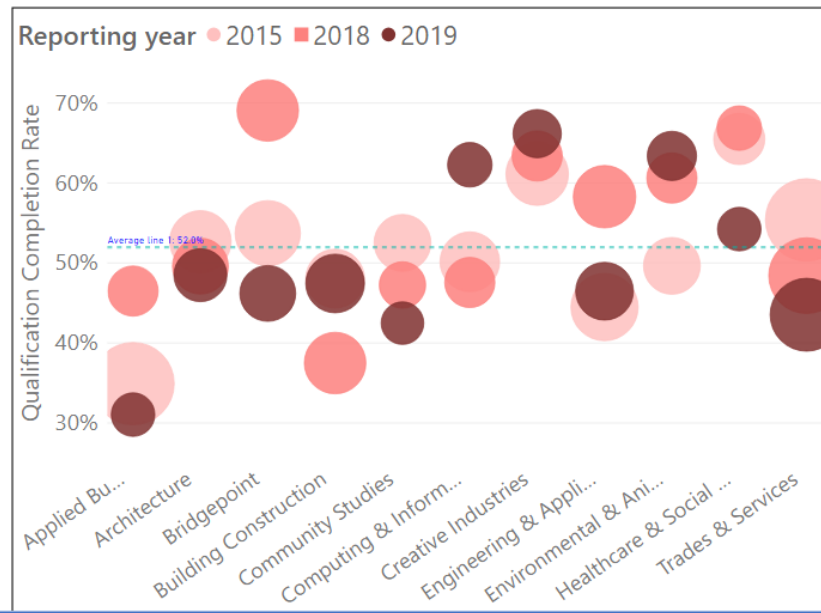
- In 2019, the Qualification Completion Rate for Under 25yrs dropped 7.5% from 2018 while that for 25+ years increased 4.8%, resulting in a 13.2% variance, despite the near closing of the gap in the previous 2 years.
- In 2018, the 25yrs Qualification Completion Rate was above Manukau Institute of Technology and the ITP sector benchmark but below those for the two Auckland universities..



2018 QC Benchmarks	Under 25yrs	25+yrs	variance
Unitec	54.5%	55.4%	0.9%
MIT	52.6%	55.4%	2.8%
AUT	62.8%	66.3%	3.5%
University of Auckland	70.4%	70.8%	0.4%
ITP Sector	53.8%	51.4%	-2.4%

Under 25 Qualification Completion Rate by School and Year Trends

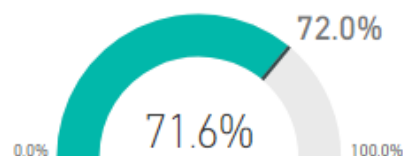
- Creative Industries, Computing & Information Technology and Environmental and Animal Sciences stayed well above the others in 2019, though all had a relatively small student size.
- Both Bridgepoint and Engineering & Applied Technology witnessed a significant drop over the 5-year period, but Applied Business saw a worrying drop to only 31.1%.
- Building Construction kept a rising trend in 2015-2018. Although it levelled off since 2018 and dropped slightly in 2019, it still showed an above average performance and contributed favourably to the overall Unitec rate given its relatively large student size.
- Trades & Services fluctuated around the average for all the schools over the years and settled as the third lowest performer in 2019.



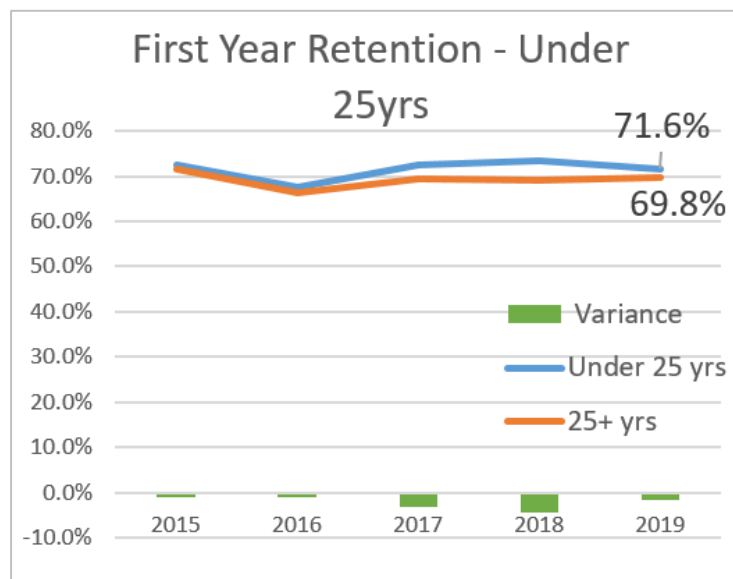
School	2015	2016	2017	2018	2019	5-year variance	2018-2019 variance	Student Headcount	EFTS
Applied Business	34.9%	36.8%	51.4%	46.5%	31.1%	-3.8%	-15.4%	266	166.8
Architecture	52.7%	44.9%	44.0%	49.6%	48.5%	-4.2%	-1.1%	429	367.6
Bridgepoint	53.7%	55.4%	64.6%	69.1%	46.2%	-7.5%	-22.9%	549	306.1
Building Construction	48.1%	35.3%	40.7%	37.5%	47.4%	-0.7%	9.9%	509	384.7
Community Studies	52.5%	54.9%	45.7%	47.3%	42.5%	-10.0%	-4.8%	211	157.3
Computing & Information Technology	50.2%	47.3%	55.7%	47.6%	62.3%	12.1%	14.7%	270	205.7
Creative Industries	61.1%	60.0%	66.7%	63.4%	66.2%	5.1%	2.8%	309	291.8
Engineering & Applied Technology	44.5%	47.9%	60.8%	58.3%	46.5%	2.0%	-11.8%	515	361.0
Environmental & Animal Sciences	49.6%	59.0%	62.9%	60.6%	63.4%	13.8%	2.8%	281	224.1
Healthcare & Social Practice	65.5%	55.9%	61.1%	66.9%	54.2%	-11.3%	-12.7%	281	208.9
Trades & Services	55.4%	55.8%	58.5%	48.4%	43.5%	-11.9%	-4.9%	610	382.7
Grand Total	51.6%	51.3%	58.0%	54.5%	47.0%	-4.6%	-7.5%	4165	3056.8

Under 25yrs First Year Retention Rate in 2019 and Year Trends

FYR 2019 for Under 25yrs:
Actual vs Institutional Target



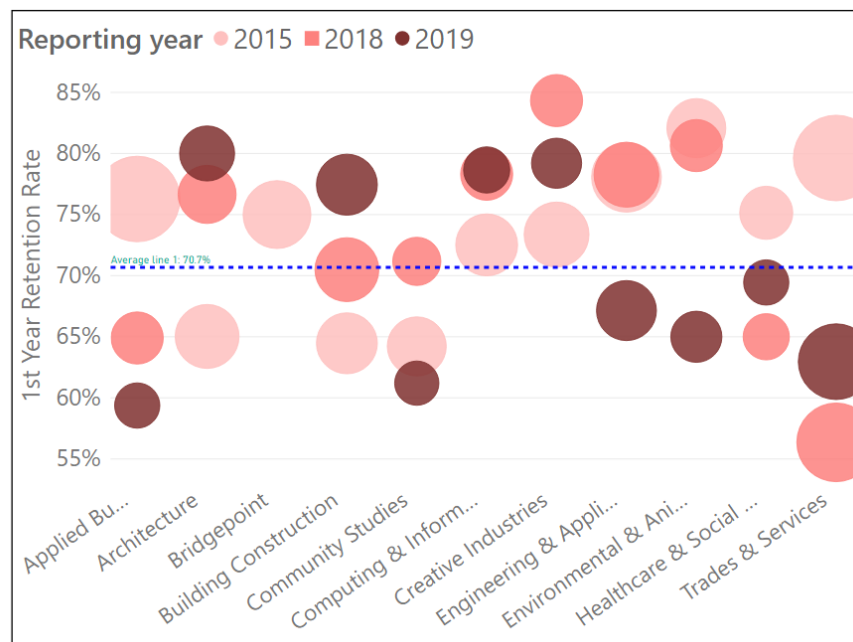
- In 2019, the variance in First Year Retention Rate between under 25yrs and 25+ yrs further narrowed to 1.8%.



2018 Retention Benchmarks	Under 25yrs	25+yrs	variance
Unitec	73.3%	69.0%	-4.3%
MIT	72.0%	62.6%	-9.4%
AUT	80.5%	73.6%	-6.9%
University of Auckland	84.9%	77.3%	-7.6%
ITP Sector	68.7%	55.9%	-12.8%

Under 25 First Year Retention Rate by School and Year Trends

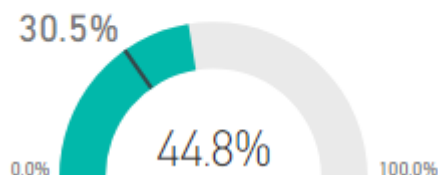
- Architecture, Building Construction, Creative Industries and Computing & Information Technology stayed high above the average in 2019. Building Construction saw a robust rising trend despite a retreat in 2018.
- Environmental and Animal Sciences suffered the biggest drop over the 2-year and 5-year periods.
- Both Applied Business and Trades & Services again witnessed a significant drop in the 5-year period, although Trades & Services went up from 2018 to 2019 to become the third lowest performer. Given its largest student size, its impact dwarfed that made by Applied Business and Community Studies.
- Engineering & Applied Technology performed well in 2018 but declined below average in 2019.



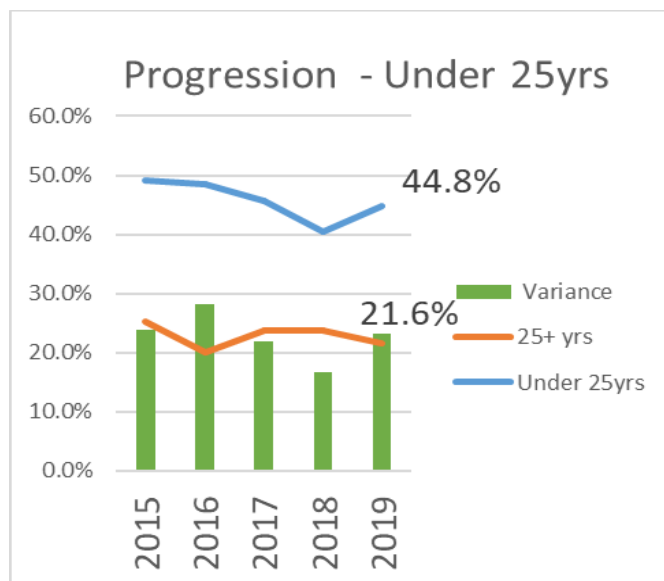
School	2015	2016	2017	2018	2019	5-year variance	2018-2019 variance	Student Headcount	EFTS
Applied Business	76.3%	69.0%	81.0%	64.9%	59.4%	-16.9%	-5.5%	266	166.8
Architecture	65.0%	59.5%	79.1%	76.6%	80.0%	15.0%	3.4%	429	367.6
Bridgepoint	75.0%	100.0%	100.0%	100.0%	0.0%	-75.0%	-100.0%	549	306.1
Building Construction	64.5%	68.1%	74.1%	70.5%	77.4%	12.9%	6.9%	509	384.7
Community Studies	64.2%	61.4%	53.6%	71.2%	61.2%	-3.0%	-10.0%	211	157.3
Computing & Information Technology	72.5%	74.4%	69.4%	78.3%	78.7%	6.2%	0.4%	270	205.7
Creative Industries	73.4%	78.9%	72.5%	84.3%	79.2%	5.8%	-5.1%	309	291.8
Engineering & Applied Technology	78.1%	74.8%	66.2%	78.3%	67.1%	-11.0%	-11.2%	515	361.0
Environmental & Animal Sciences	82.1%	59.8%	67.9%	80.6%	65.0%	-17.1%	-15.6%	281	224.1
Healthcare & Social Practice	75.1%	66.2%	80.0%	65.0%	69.4%	-5.7%	4.4%	281	208.9
Trades & Services	79.6%	42.0%	62.7%	56.4%	63.0%	-16.6%	6.6%	610	382.7
Grand Total	72.5%	67.5%	72.5%	73.3%	71.6%	-0.9%	-1.7%	4165	3056.8

Under 25 Progression Rate in 2019 and Year Trends

Progression 2019 for Under 25yrs: Actual vs Institutional Target



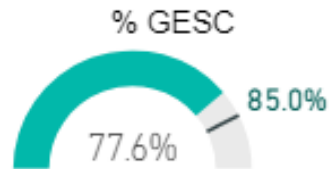
- in 2019, the Progression Rate for Under 25yrs increased 4.4%, shifting the variance from -16.6% in 2018 to -23.2% in 2019.
- Unitec Under 25yr Progression Rate was only slightly above the ITP Sector benchmark but fell below Manukau Institute of Technology and far below its University counterparts.



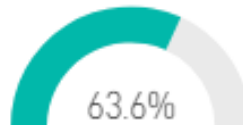
2018 Progression Benchmarks	Under 25yrs	25+yrs	variance
Unitec	40.4%	23.8%	-16.6%
MIT	40.9%	33.8%	-7.1%
AUT	89.9%	65.4%	-24.5%
University of Auckland	90.3%	80.0%	-10.3%
ITP Sector	40%	29.6%	-10.4%

Under 25yrs Graduate Outcomes

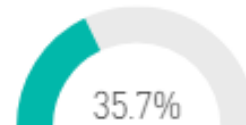
% Graduates
Employed,
Studying or
Combining (GESC)



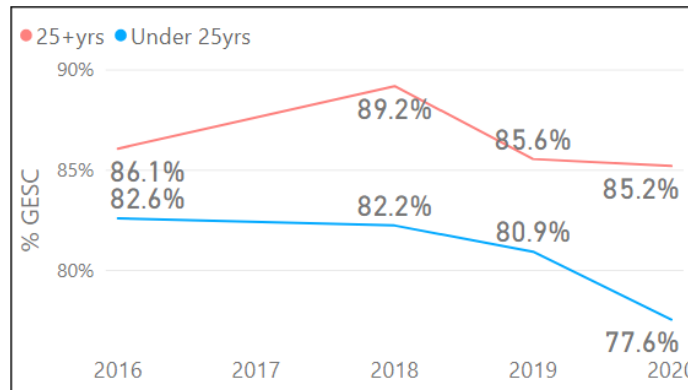
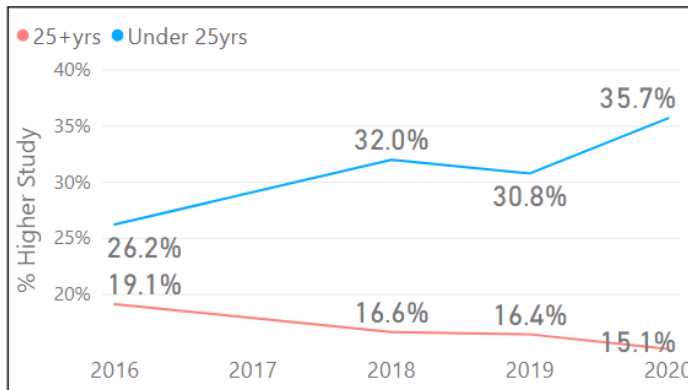
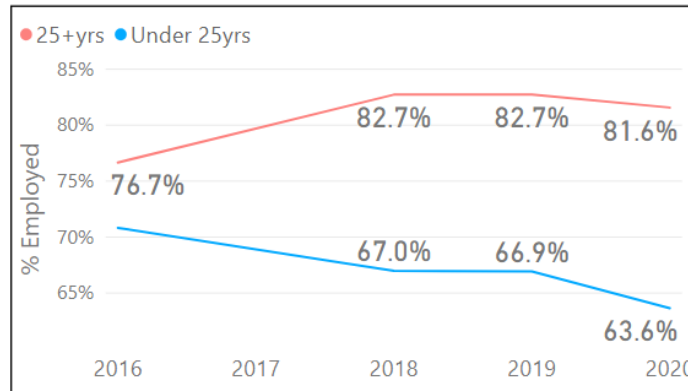
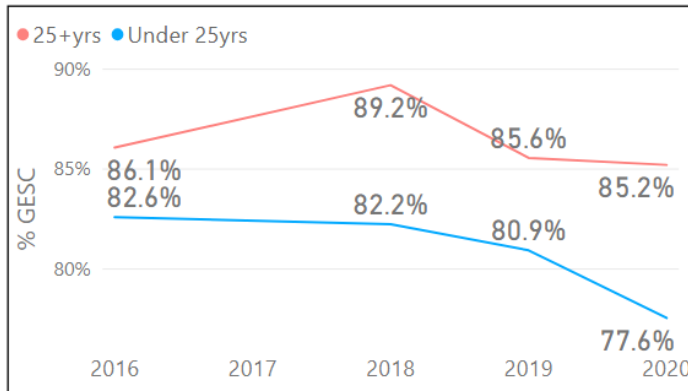
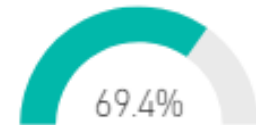
% Employed



% Higher Study



% Qualification Relevant...

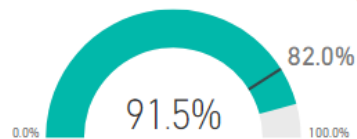


- In 2020, % GESC went down 3% due to a similar drop in % Employed.
- This is despite an increase of 5% in % Higher Study, suggesting that those who were engaged in Higher Study were also employed, hence offsetting the increase.

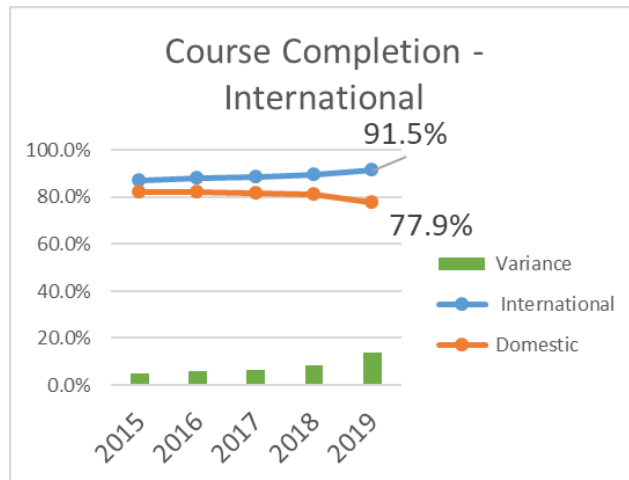
International

International Successful Course Completion Rate in 2019 and Year Trends

SCC 2019 for International:
Actual vs Institutional Target



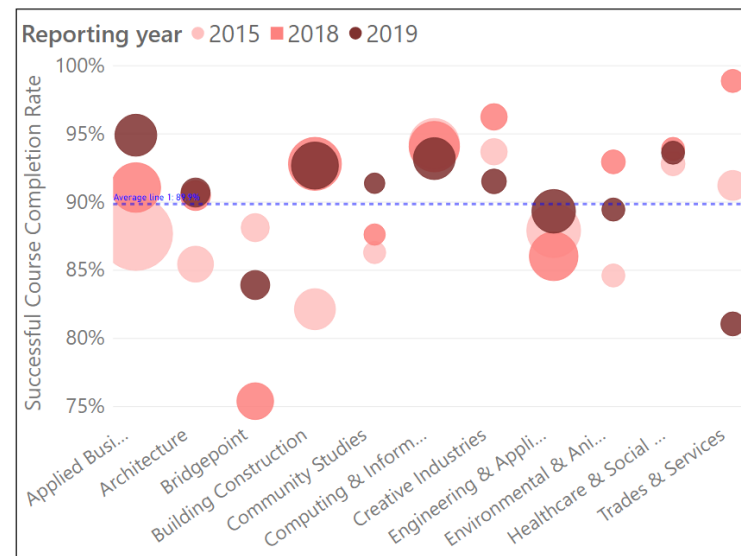
- In 2019, the Successful Course Completion Rate for International exceeded the target by 9.5%.
- However in 2018, Unitec had the lowest rate when compared with the ITP Sector and its key Auckland counterparts.



2018 SCC Benchmarks	International	Domestic	Variance
Unitec	89.6%	81.1%	-8.5%
MIT	92.6%	77.9%	-14.7%
AUT	90.7%	83.7%	-7.0%
University of Auckland	91.2%	89.0%	-2.2%
ITP Sector	91.4%	78.8%	-12.6%

International Successful Course Completion Rate by School and Year Trends

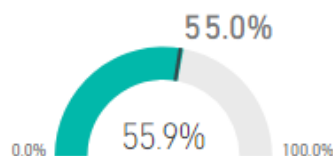
- Applied Business has shown a rising trend and reached 94.9% in 2019 to become the top performer.
- Also performing well was Building Construction which increased continuously over the years to reach 90.7%. With its large student size, it has contributed favourably to the overall Unitec rate.
- Trades & Services as the lowest performer has decreased over the years considerably but has not hugely impacted on the overall rate given its small student size. Similarly for the low performer Bridgepoint which fluctuated in the 5-year period but did not produce a significant impact on the Unitec rate.
- Community Studies saw a nice climb in 2019 after having plateaued in 2018.



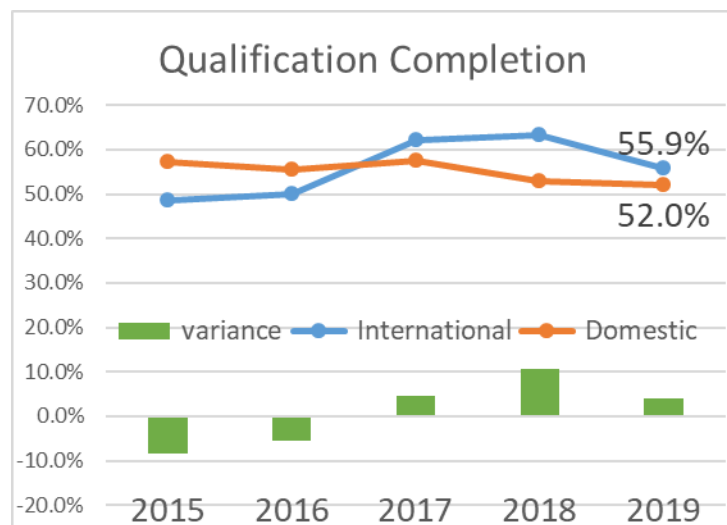
School	2015	2016	2017	2018	2019	5-year variance	2018-2019 variance	Student Headcount	EFTS
Applied Business	87.7%	89.4%	88.8%	91.1%	94.9%	7.2%	3.8%	265	181.8
Architecture	85.4%	86.1%	91.0%	90.5%	90.7%	5.3%	0.2%	94	83.1
Bridgepoint	88.1%	88.4%	79.1%	75.4%	83.9%	-4.2%	8.5%	154	72.7
Building Construction	82.1%	87.8%	88.9%	92.8%	92.7%	10.6%	-0.1%	324	251.0
Community Studies	86.3%	81.2%	87.8%	87.6%	91.4%	5.1%	3.8%	10	7.3
Computing & Information Technology	94.3%	92.5%	92.5%	94.1%	93.2%	-1.1%	-0.9%	274	195.2
Creative Industries	93.7%	92.8%	97.7%	96.2%	91.5%	-2.2%	-4.7%	46	41.7
Engineering & Applied Technology	87.9%	82.7%	85.4%	86.0%	89.3%	1.4%	3.3%	244	205.0
Environmental & Animal Sciences	84.6%	89.0%	89.8%	93.0%	89.5%	4.9%	-3.5%	26	21.4
Healthcare & Social Practice	92.8%	96.0%	91.8%	93.9%	93.6%	0.8%	-0.3%	39	31.4
Trades & Services	91.2%	94.7%	88.6%	98.9%	81.1%	-10.1%	-17.8%	21	12.1
Grand Total	87.3%	87.9%	88.4%	89.6%	91.5%	4.2%	1.9%	1450	1102.7

International Qualification Completion Rate in 2019 and Year Trends

QC 2019 for International: Actual vs Institutional Target



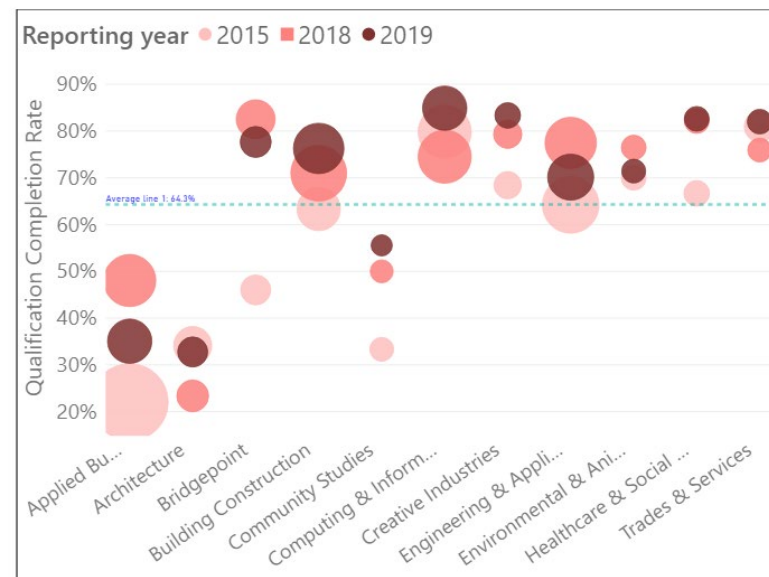
- In 2019, the Qualification Completion Rate dropped 7.5% from 2018 to 55.9% in 2019 and managed to meet the institutional target.
- In 2018, although Unitec was below its University counterparts in the Qualification Completion rate, it performed better than the ITP sector and Manukau Institute of Technology.



2018 QC Benchmarks	International	Domestic	Variance
Unitec	63.4%	52.8%	-10.6%
MIT	57.9%	53.3%	-4.6%
AUT	76.2%	61.6%	-14.6%
University of Auckland	74.6%	70.0%	-4.6%
ITP Sector	63.0%	51.2%	-11.8%

International Qualification Completion Rate by School and Year Trends

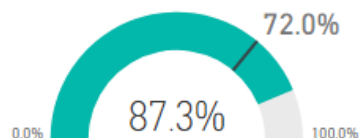
- Building Construction kept up its rising momentum throughout the 5-year period while Computing & Information Technology rebounded from its low in 2018 to a high of 84.9% to become the top performer.
- Engineering & Applied Technology also performed above average despite a drop of 7.4% from 2018 to 2019.
- Five schools performed above average but had relatively smaller impact given their small student size.
- Both Applied Business and Architecture were low performers in the 5-year period though the former had a larger student size and hence greater negative impact. Of concern is Applied Business which had the top Successful Course Completion Rate but second lowest Qualification Completion Rate in 2019.



School	2015	2016	2017	2018	2019	5-year variance	2018-2019 variance	Student Headcount	EFTS
Applied Business	87.7%	89.4%	88.8%	91.1%	94.9%	7.2%	3.8%	265	181.8
Architecture	85.4%	86.1%	91.0%	90.5%	90.7%	5.3%	0.2%	94	83.1
Bridgepoint	88.1%	88.4%	79.1%	75.4%	83.9%	-4.2%	8.5%	154	72.7
Building Construction	82.1%	87.8%	88.9%	92.8%	92.7%	10.6%	-0.1%	324	251.0
Community Studies	86.3%	81.2%	87.8%	87.6%	91.4%	5.1%	3.8%	10	7.3
Computing & Information Technology	94.3%	92.5%	92.5%	94.1%	93.2%	-1.1%	-0.9%	274	195.2
Creative Industries	93.7%	92.8%	97.7%	96.2%	91.5%	-2.2%	-4.7%	46	41.7
Engineering & Applied Technology	87.9%	82.7%	85.4%	86.0%	89.3%	1.4%	3.3%	244	205.0
Environmental & Animal Sciences	84.6%	89.0%	89.8%	93.0%	89.5%	4.9%	-3.5%	26	21.4
Healthcare & Social Practice	92.8%	96.0%	91.8%	93.9%	93.6%	0.8%	-0.3%	39	31.4
Trades & Services	91.2%	94.7%	88.6%	98.9%	81.1%	-10.1%	-17.8%	21	12.1
Grand Total	87.3%	87.9%	88.4%	89.6%	91.5%	4.2%	1.9%	1450	1102.7

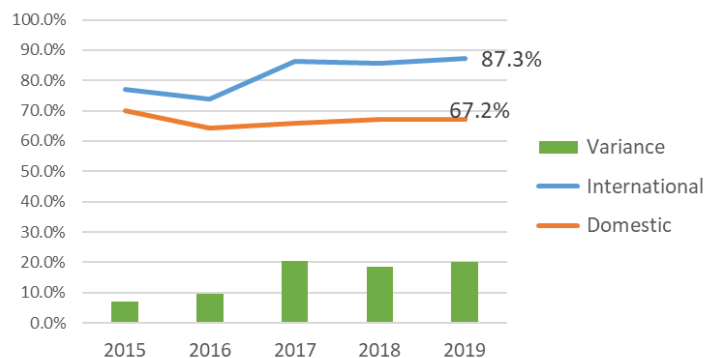
International First Year Retention Rate in 2019 and Year Trends

FYR 2019 for International:
Actual vs Institutional Target



- In 2019, the International First Year Retention Rate continued its rising trend and went up 1.7% to 87.3%, well above the institutional target.
- In 2018, although Unitec was below its University counterparts in the First Year Retention Rate, it performed better than the ITP sector and was far above Manukau Institute of Technology.

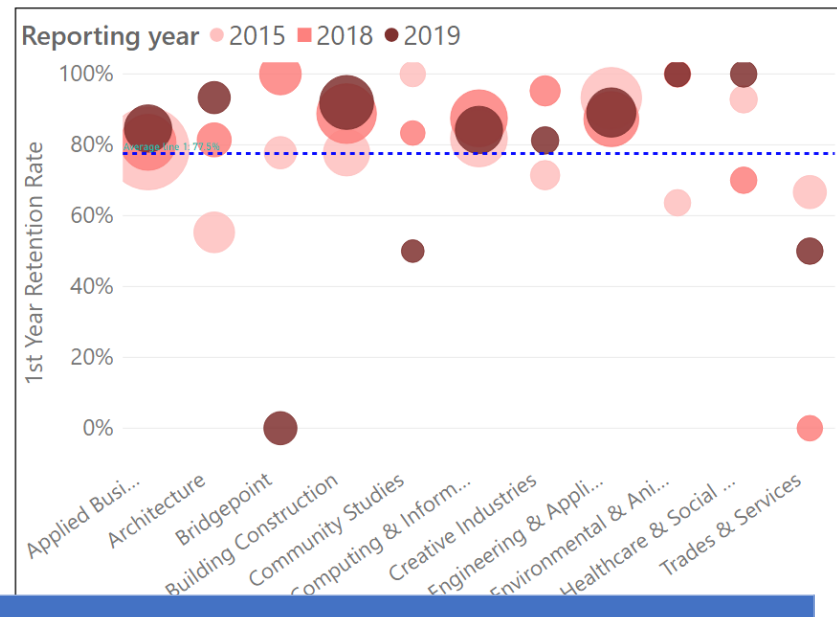
First Year Retention Rate - International



2018 FYR Benchmarks	International	Domestic	Variance
Unitec	85.6%	67.2%	-18.4%
MIT	57.1%	71.6%	14.5%
AUT	90.9%	77.4%	-13.5%
University of Auckland	92.5%	82.3%	-10.2%
ITP Sector	71.6%	61.4%	-10.2%

International First Year Retention Rate by School and Year Trends

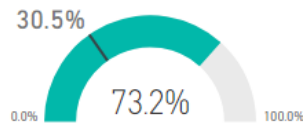
- Despite being top performers in 2019, Environmental & Animal Sciences and Healthcare & Social Practice had a very small student size and so minimal impact on the overall rate.
- Building Construction continued its excellent performance and of interest is Engineering & Applied Technology which was below average in all other priority groups performed well in the International Group.
- Community Studies continued its downward turn over the 5-year period and Trades & Services showed a rebound but was still below average.



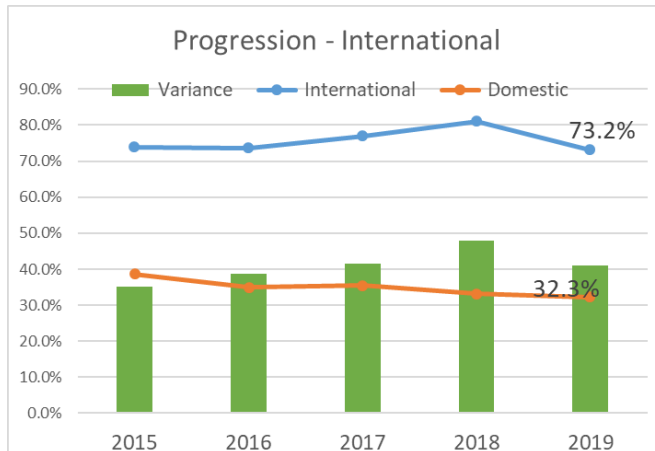
School	2015	2016	2017	2018	2019	5-year variance	2018-2019 variance	Student Headcount	EFTS
Applied Business	87.7%	89.4%	88.8%	91.1%	94.9%	7.2%	3.8%	265	181.8
Architecture	85.4%	86.1%	91.0%	90.5%	90.7%	5.3%	0.2%	94	83.1
Bridgepoint	88.1%	88.4%	79.1%	75.4%	83.9%	-4.2%	8.5%	154	72.7
Building Construction	82.1%	87.8%	88.9%	92.8%	92.7%	10.6%	-0.1%	324	251.0
Community Studies	86.3%	81.2%	87.8%	87.6%	91.4%	5.1%	3.8%	10	7.3
Computing & Information Technology	94.3%	92.5%	92.5%	94.1%	93.2%	-1.1%	-0.9%	274	195.2
Creative Industries	93.7%	92.8%	97.7%	96.2%	91.5%	-2.2%	-4.7%	46	41.7
Engineering & Applied Technology	87.9%	82.7%	85.4%	86.0%	89.3%	1.4%	3.3%	244	205.0
Environmental & Animal Sciences	84.6%	89.0%	89.8%	93.0%	89.5%	4.9%	-3.5%	26	21.4
Healthcare & Social Practice	92.8%	96.0%	91.8%	93.9%	93.6%	0.8%	-0.3%	39	31.4
Trades & Services	91.2%	94.7%	88.6%	98.9%	81.1%	-10.1%	-17.8%	21	12.1
Grand Total	87.3%	87.9%	88.4%	89.6%	91.5%	4.2%	1.9%	1450	1102.7

International Progression Rate in 2019 and Year Trends

Progression 2019 for International:
Actual vs Institutional Target



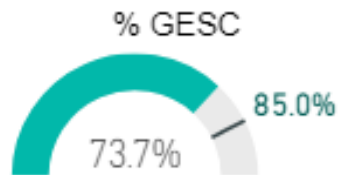
- In 2019, the Progression Rate dropped 7.9% from 2018 to 73.2% in 2019 after a 4-year rising trend.
- In 2018, the Unitec rate was below that for the University of Auckland but otherwise above its other counterparts and the ITP sector.



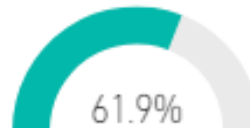
2018 Progression Benchmarks	International	Domestic	Variance
Unitec	81.1%	33.1%	-48.0%
MIT	58.0%	37.9%	-20.1%
AUT	72.7%	67.2%	-5.5%
University of Auckland	94.2%	89.0%	-5.2%
ITP Sector	66.2%	32.8%	-33.4%

International Graduate Outcomes

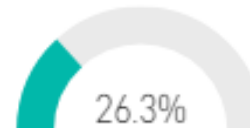
% Graduates
Employed,
Studying or
Combining (GESC)



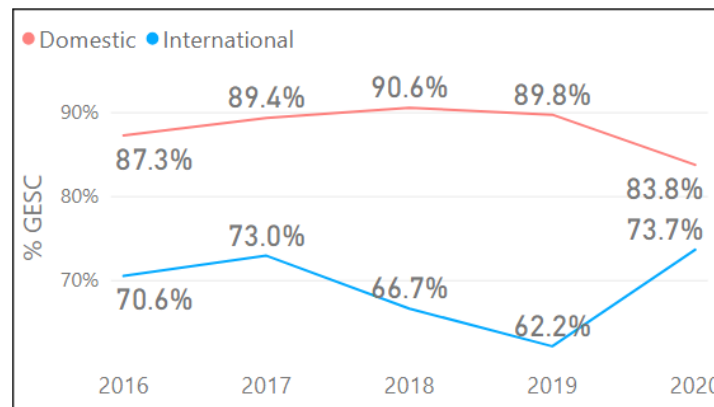
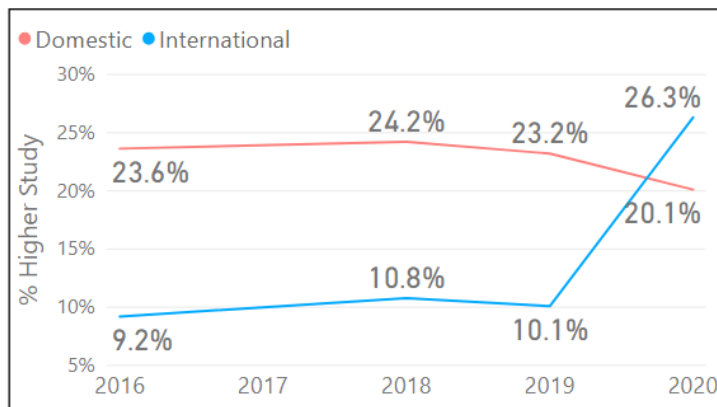
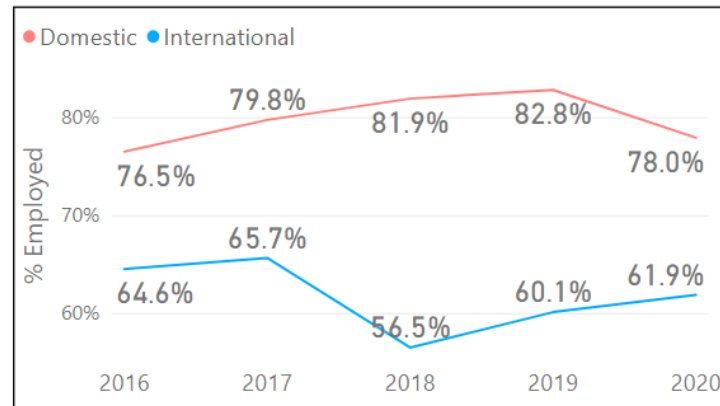
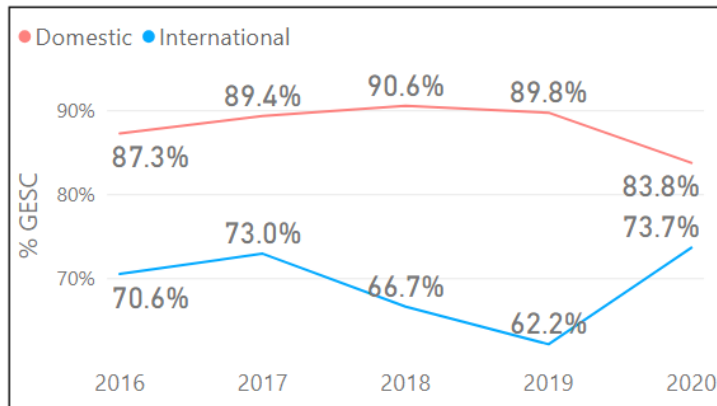
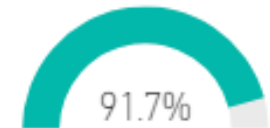
% Employed



% Higher Study



% Qualification Relevant...



- In 2020, % GESC for International went up 9.5% fuelled by both a 1.8% rise in % Employed and a significant 16.2% rise in H% Higher Study.
- % Qualification Relevant to Employment for International also showed a rising trend over the past 3 years to reach a record high of 73.7% for the group.



Student Performance KPIs & Definitions

All New Zealand tertiary institutes are measured and benchmarked using the same EPI metrics and definitions. Below is a brief description of each. More detailed information and methodology can be found at <https://www.tec.govt.nz/assets/Forms-templates-and-guides/631b96b442/EPI-Guidelines-Methodology-Update-August-2018.pdf>

EPI #1: Successful course completion rate – the proportion of course enrolments (calculated on an EFTS delivered basis) ending in a given year that have been successfully completed

EPI #2: Cohort-based first year retention rate - the proportion of students in a cohort who enrol in a qualification at the same level in the year after they enter the cohort. First year retention rates are measured for students who are enrolled in a 2 EFTS or above qualification at level 4 and above.

EPI #3: Cohort-based qualification completion rate - the proportion of students in a cohort who go on to complete a qualification at the same level as the cohort.

EPI #4: Student progression rate – the proportion of students completing a qualification who then enrol, within a given time period, in a higher-level qualification. The enrolment in a higher level qualification can be at any TEO.

Graduates employed, studying or combining (GESC) - the proportion of students who have graduated that are either employed, studying or both. This is based off survey data conducted by students who have graduated.

Relevance of qualification to employment - the proportion of graduate students who are employed who rate their main job as 'highly related' or 'moderately related' to their qualification. This is based off survey data conducted by students who have graduated.

GESC Response rates by school

Wave	2020			2019		
School Name	Received	Sent	Response Rate	Received	Sent	Response Rate
Mindlab	150	317	47.3%	403	905	44.5%
Applied Business	81	247	32.8%	131	436	30.0%
Bridgepoint	65	195	33.3%	124	318	39.0%
Computing & Information Technology	42	119	35.3%	114	335	34.0%
Building Construction	35	149	23.5%	95	322	29.5%
Engineering & Applied Technology	24	82	29.3%	85	193	44.0%
Architecture	19	47	40.4%	82	207	39.6%
Healthcare & Social Practice	18	44	40.9%	80	223	35.9%
Community Studies	12	36	33.3%	65	194	33.5%
Trades & Services	12	58	20.7%	38	103	36.9%
Creative Industries	5	20	25.0%	38	181	21.0%
Environmental & Animal Sciences	5	14	35.7%	35	102	34.3%
Te Puna Ako	4	9	44.4%	16	32	50.0%
Total	472	1337	35.3%	1306	3551	36.8%