



2018 Student Performance Interim Report

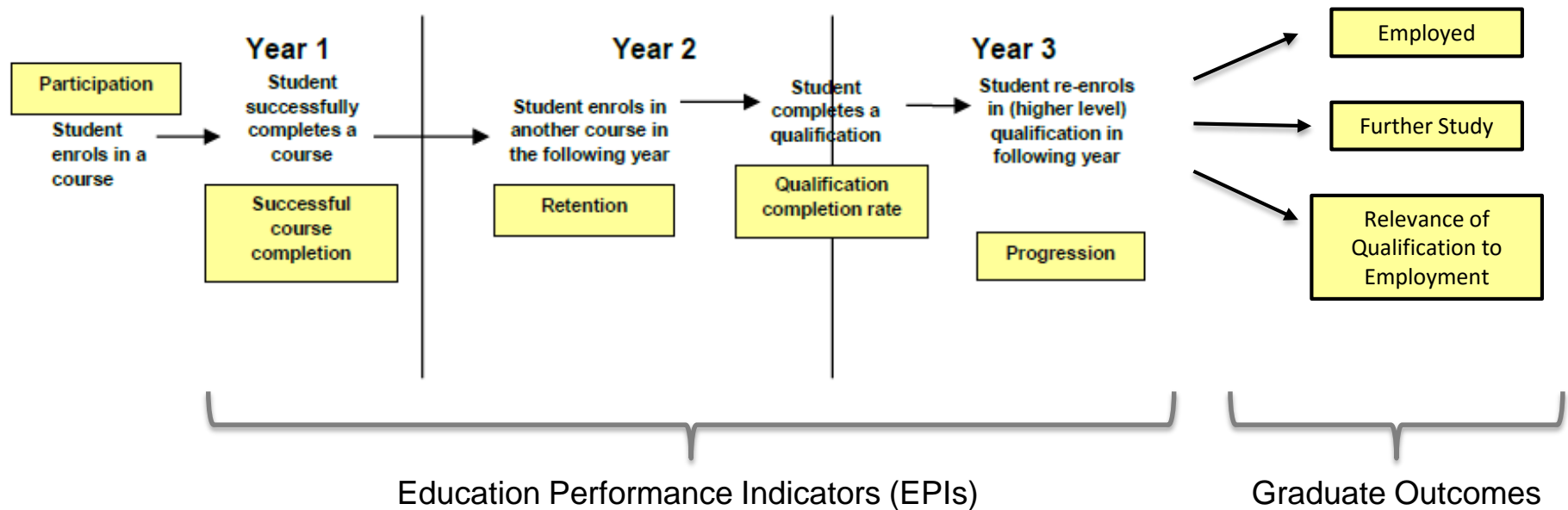
March 2019
Te Korowai Kahurangi

Unitec's Student Performance Framework and Student Success KPIs

Student Performance Framework – The way we measure performance

Student educational performance is measured using the four mandatory education performance indicators (EPIs) that follow the student journey from completing their first year to graduation. All New Zealand tertiary institutes are measured and benchmarked on these metrics. Graduate outcomes are also measured using a survey to all students who graduate each semester.

Representation of how EPIs & graduate outcomes track students' achievement





Student Performance KPIs & Definitions

All New Zealand tertiary institutes are measured and benchmarked using the same EPI metrics and definitions. Below is a brief description of each. More detailed information and methodology can be found at <https://www.tec.govt.nz/assets/Forms-templates-and-guides/631b96b442/EPI-Guidelines-Methodology-Update-August-2018.pdf>

EPI #1: Successful course completion rate – the proportion of course enrolments (calculated on an EFTS delivered basis) ending in a given year that have been successfully completed

EPI #2: Cohort-based first year retention rate - the proportion of students in a cohort who enrol in a qualification at the same level in the year after they enter the cohort. First year retention rates are measured for students who are enrolled in a 2 EFTS or above qualification at level 4 and above.

EPI #3: Cohort-based qualification completion rate - the proportion of students in a cohort who go on to complete a qualification at the same level as the cohort.

EPI #4: Student progression rate – the proportion of students completing a qualification who then enrol, within a given time period, in a higher-level qualification. The enrolment in a higher level qualification can be at any TEO.

Graduates employed, studying or combining (GESC) - the proportion of students who have graduated that are either employed, studying or both. This is based off survey data conducted by students who have graduated.

Relevance of qualification to employment - the proportion of graduate students who are employed who rate their main job as 'highly related' or 'moderately related' to their qualification. This is based off survey data conducted by students who have graduated.

Overview of Dashboards – how we can access this information

A number of interactive dashboards have been built (and will continue to be developed) that provides Unitec staff with data on applications, enrolments, student success and experience. The dashboards are built using Power BI and the user requires a Power BI login which is available to Heads of Schools, Programme Managers and various support staff.

Applications & Enrolments Dashboard

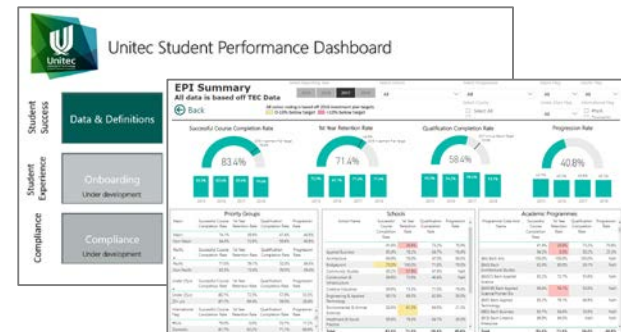


Live view (updated daily) of:

- applications pipeline
- enrolments (student headcount & EFTs)
- performance vs budget

Developed and managed by Commercial Services

Student Performance Dashboard



Post Semester view of:

- Educational Performance Indicators (EPIs)
- Graduate Outcomes
- Students Experience (Net Promoter Score - NPS)
- Student Joining Experience
- Programme Compliance

Using TEC data only and student survey data, this information is used for institutional evaluation, including of programmes and courses

Developed and managed by Te Korowai Kahurangi

2018 Student Success Performance

Successful Course Completion

1st Year Retention

Qualification Completion

Progression to Higher Education

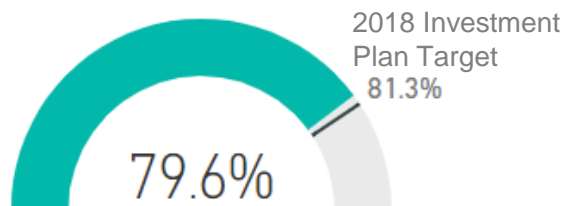


EPI #1: Successful Course Completion

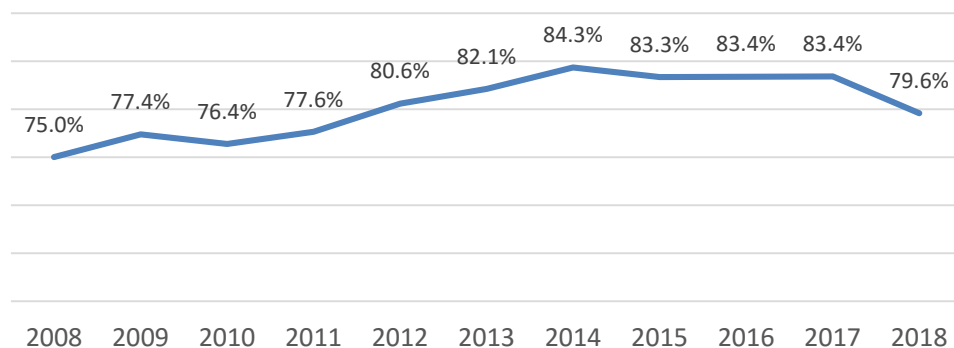
Successful course completion has dropped significantly in 2018 to be 2.7% below target. As shown in the next 3 slides, this is likely driven by grades not being processed in time rather than actual student academic performance. For the 2018 an unacceptable 4,365 student grades (across 361 courses) have not had grades reported (in the January SDR).

Of the eleven Schools, Creative Industries show the highest level of performance driven by strong course completion rates by GDip Creative Practice, PGCert Creative Practice and Bach Performing & Screen Arts programmes. Five Schools have success rates below target with Bridgepoint and Trades & Services showing significantly lower SCC rates.

2018 Unitec Successful Course Completion Rate

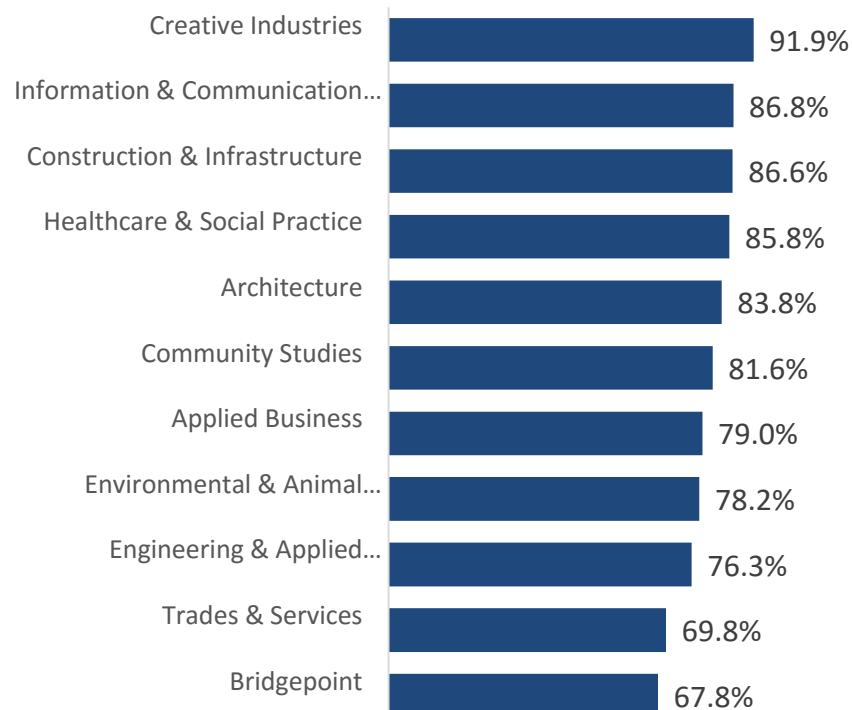


Unitec Successful Course Completion Rate



2017 Benchmarks*	Successful Course Completion Rate
Unitec	83.4%
University Sector Average	87.2%
ITP Sector Average	81.7%

2018 Successful Course Completion Rate by School



* ITP Sector benchmarking only available for 2017, 2018 benchmarks will be available April 2019



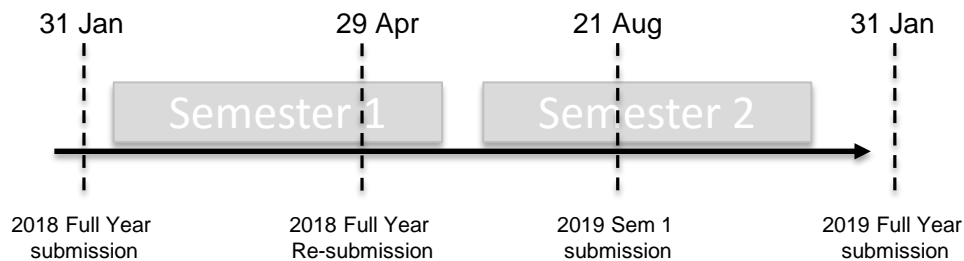
The Single Data Return (SDR) Process

Student academic performance data is sent to TEC three times a year with mandated timeframes.

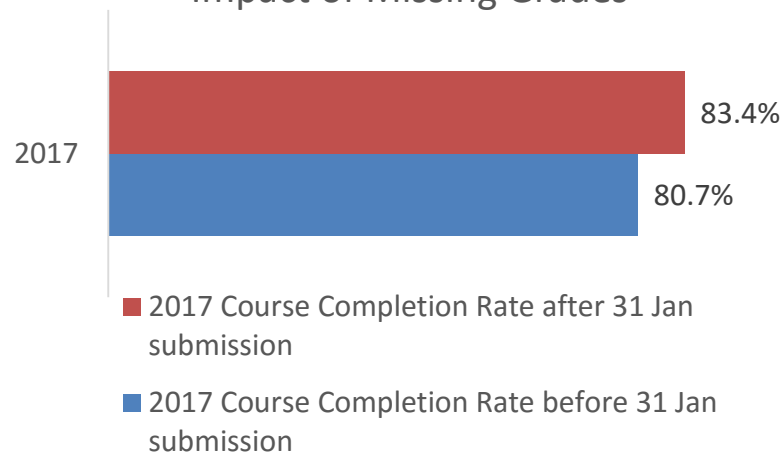
Historically, the data that Unitec is able to send is limited by the number of grades which have been processed.

After the 31 January **2019** SDR was sent to TEC, Unitec's course completion rate for 2017 increased from 80.7% to 83.4% due to a 'catch-up' of completed grades. As a result, Unitec's course completion rate was reported 2.7% lower than actual as a direct result of missing grades.

Single Data Return (SDR) Files Sent to TEC



Impact of Missing Grades





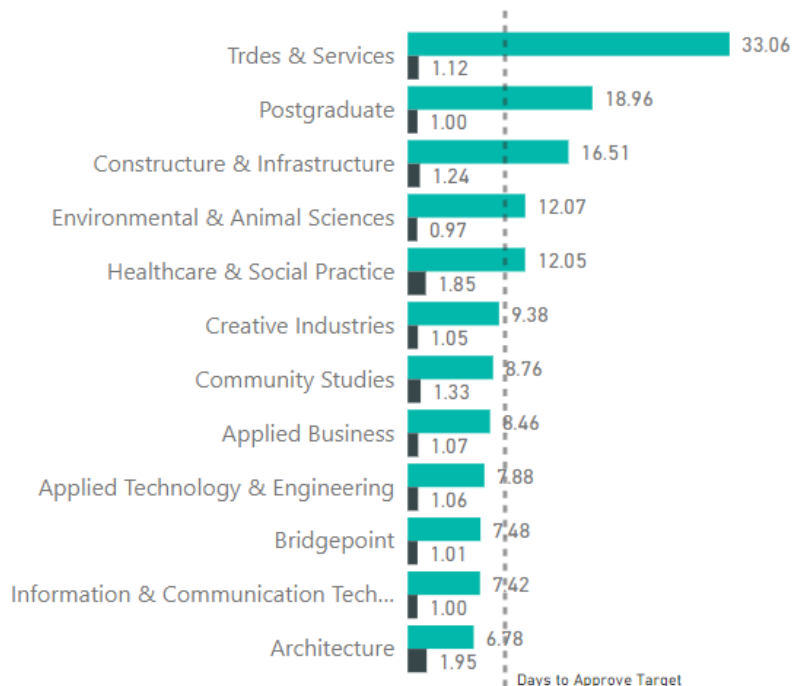
Grade Approval Process

Analysing the 2018 semester two grading performance, the average time to approve course grades across all of Unitec is 12.4 days which is above the 10 day target. Performance across the schools is inconsistent with Trades & Services averaging 33 days in total. Some courses were approved close to 100 days after the course end date. The average time to post course grades across all of Unitec is 1.2 days vs the 1 day target.

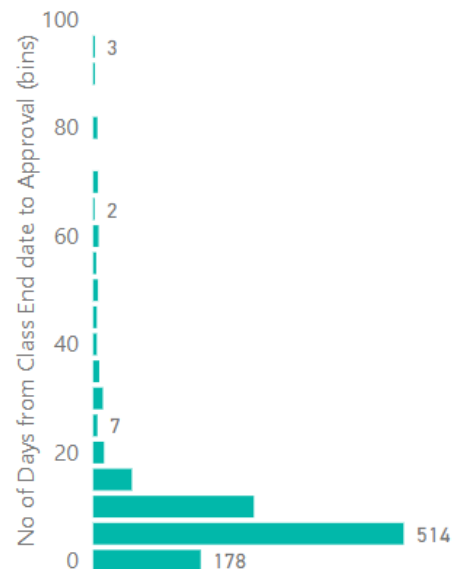
Recommendation – to review the grade approval process (timings, staff availability, governance), reporting (increase visibility to the schools), prioritisation of historical grades.

Average Days to Approve and Post Grades

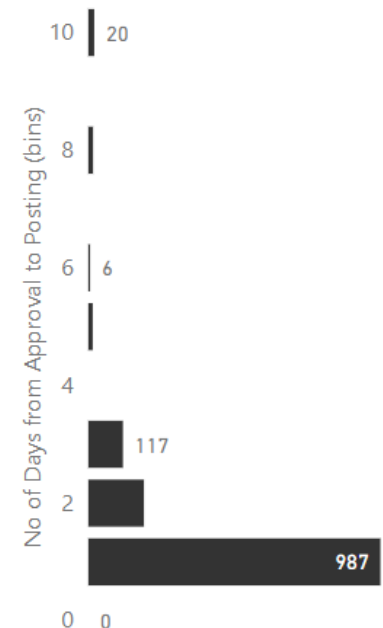
● Average of No of Days from Class End date to Approval ● Average of No of Days from Approval to Posting



No. of Days to Approve (bins)



No. of Days to Post (bins)





Outstanding Grades

As at 19th Feb 2019, 361 courses had grades outstanding which equates to 4,365 student grades. The majority of these courses are less than 100 days outstanding however there are a number of courses showing a longer time frame (many are due to incorrect course end dates in the system).

To increase visibility and help with the prioritisation of outstanding grades, Te Korowai Kahurangi is building detailed reporting tools for reporting on grade approvals and outstanding grades. These will be actively monitored and followed up to ensure grades are entered in all fields by the 11th day following the end of course.

Outstanding Courses

361

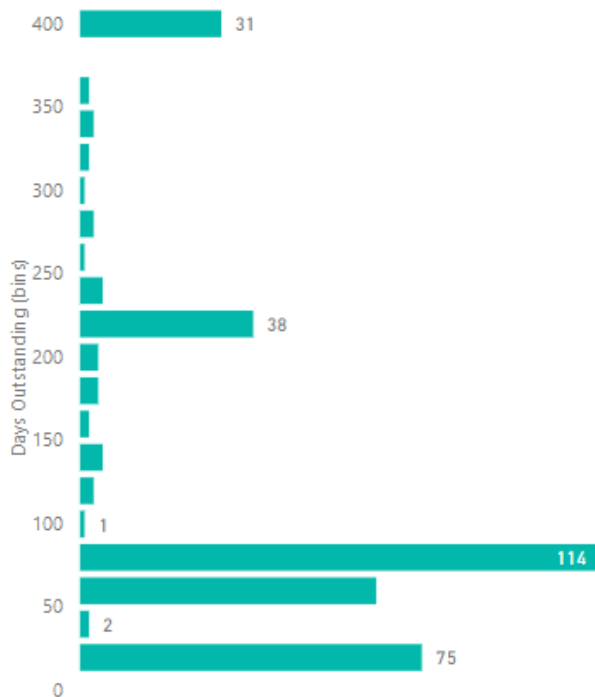
Outstanding Grades

4365

Outstanding Grades from 2018

Schools	Count of Courses	Student Grades
Engineering & Applied Technology	263	2796
Construction & Infrastructure	51	639
Bridgepoint	18	394
Applied Business	7	25
Mindlab	7	175
Architecture	6	98
Healthcare & Social Practice	5	48
Community Studies	2	185
Information & Communication Technology	2	5
Total	361	4365

Ageing of Outstanding Grades (Days Binned)

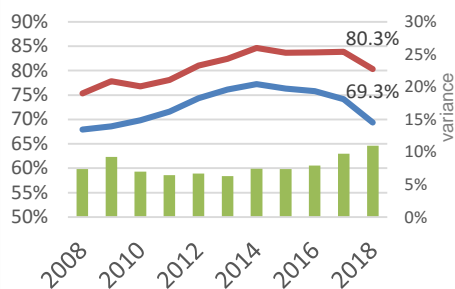


EPI #1: Successful Course Completion by Priority Groups

Course completion rates continue to fall for Māori, Pacific and Under 25 students. The gap between Pacific and non-Pacific is the greatest at 13.1%, while the variance between Māori and non-Māori is 11% and Under 25s 4.2%. SCC rates for all three groups has declined since 2014, though 2018 figures are subject to change as a result of non-processed grades. Of significant concern is the ongoing growth in disparity evident in the rates for Māori, Pacific and international students, notwithstanding that Unitec had better than sector average success rates for Māori in 2017, though the opposite was true for the other groups..

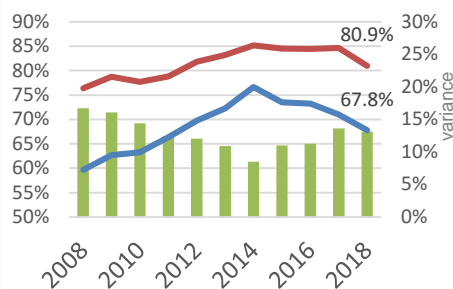
International student completion rates continue to improve into 2018 with the gap between domestic and international students widening, though this is due more (but not exclusively) to declining domestic rates.

Course Completion - Māori



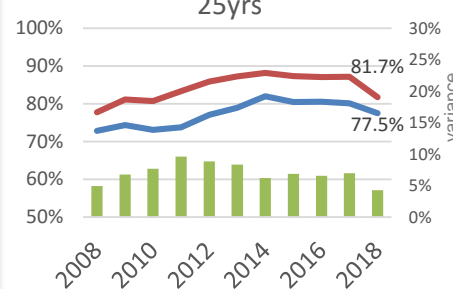
variance Māori
Non-Māori

Course Completion - Pacific



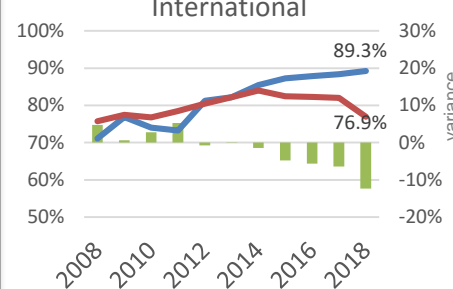
variance Pacific
Non-Pacific

Course Completion - Under 25yrs



variance Under 25yrs
25+yrs

Course Completion - International



variance International
Domestic

2017 Benchmarks	Māori	Non-Māori	Variance
Unitec	74.1%	83.9%	9.8%
MIT	72.6%	83.6%	11.0%
AUT	82.1%	85.2%	3.1%
University of Auckland	86.0%	89.6%	3.6%
ITP Sector	72.5%	83.2%	10.7%

2017 Benchmarks	Pacific	Non-Pacific	Variance
Unitec	71.0%	84.6%	13.6%
MIT	77.1%	84.3%	7.2%
AUT	69.5%	87.0%	17.5%
University of Auckland	75.7%	90.7%	15.0%
ITP Sector	73.7%	82.2%	8.5%

2017 Benchmarks	Under 25yrs	25+yrs	Variance
Unitec	80.1%	91.9%	11.8%
MIT	79.8%	85.7%	5.9%
AUT	84.0%	88.1%	4.1%
University of Auckland	89.1%	91.9%	2.8%
ITP Sector	80.7%	82.8%	2.1%

2017 Benchmarks	International	Domestic	Variance
Unitec	88.4%	81.7%	-6.7%
MIT	91.8%	80.5%	-11.3%
AUT	90.6%	83.9%	-6.7%
University of Auckland	90.5%	87.3%	-3.2%
ITP Sector	91.1%	79.7%	-11.4%

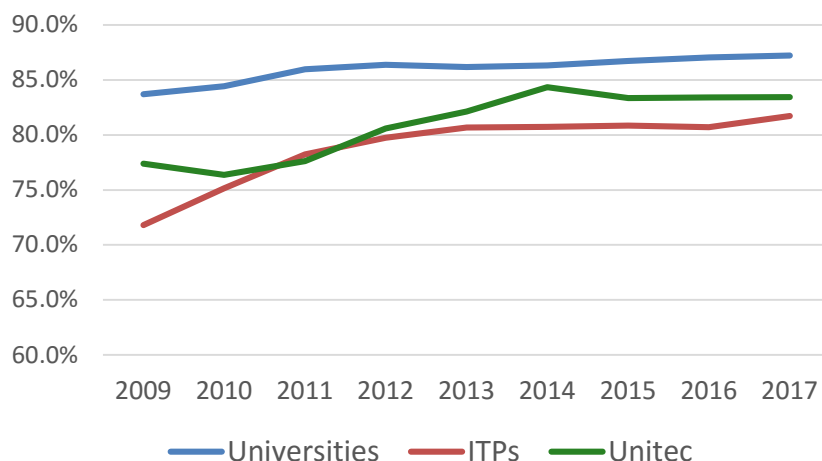


EPI #1: Successful Course Completion Benchmarks

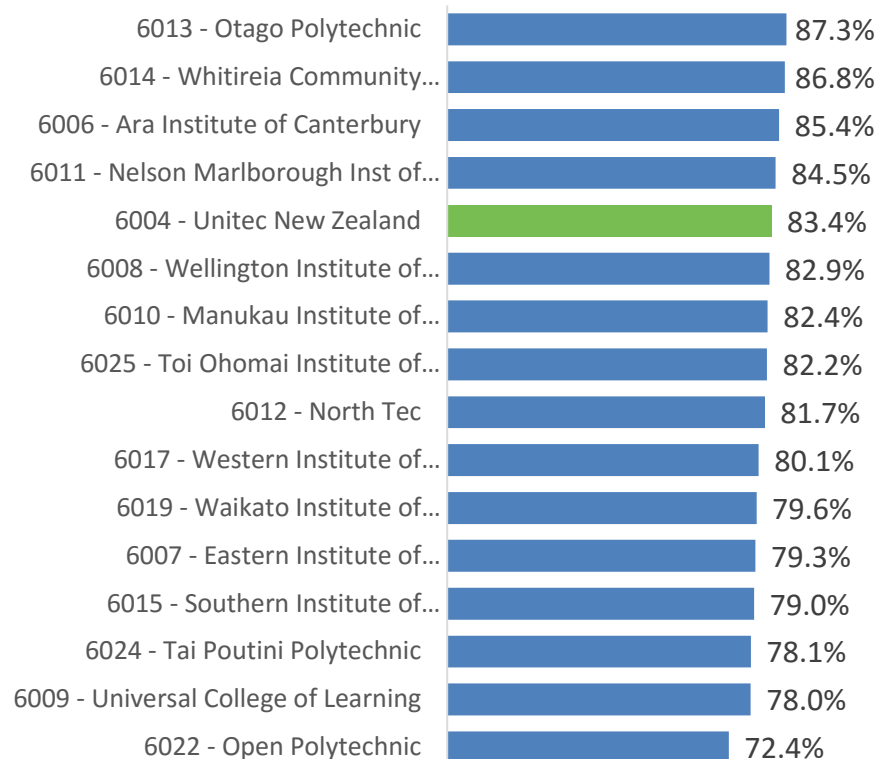
Unitec's strong growth from 2010 to 2014 showed a higher course completion rate than the ITP average. In 2017, Unitec ranked 5th of all ITPs. However, on current 2018 results, Unitec would be ranked in the lower half of all ITPs and on a par with Wintec's 2017 results.

Universities continue to show a higher, and steadily increasing, average course completion rate than ITPs.

Successful Course Completion Rate



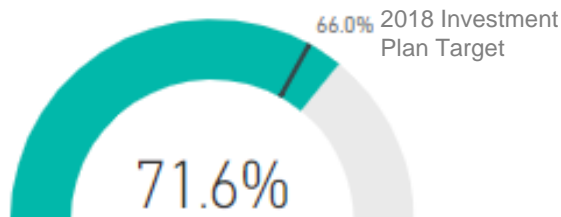
2017 Successful Course Completion Rate - ITPs



EPI #2: First Year Retention

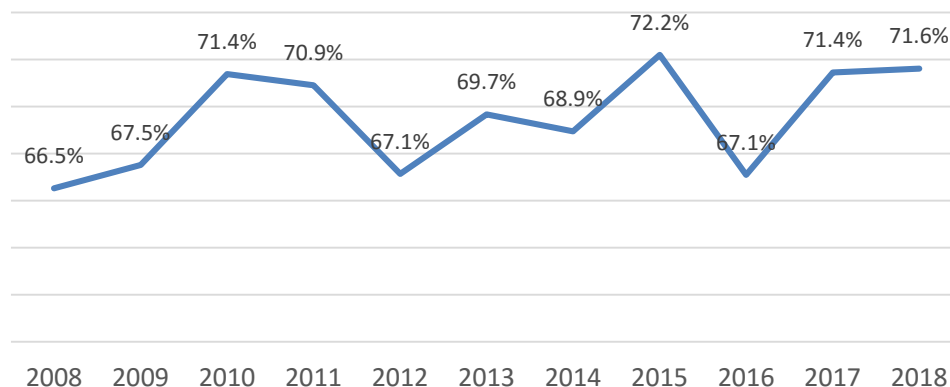
Unitec's first year retention rates continue to track at a high level following the increase shown in 2017 and is well above target. Six schools rank above the 2018 investment plan target with Creative Industries ranked the highest of all schools driven by strong performance in their Masters of Design and Bachelor of Performing and Screen Arts programmes.

2018 Unitec First Year Retention Rate

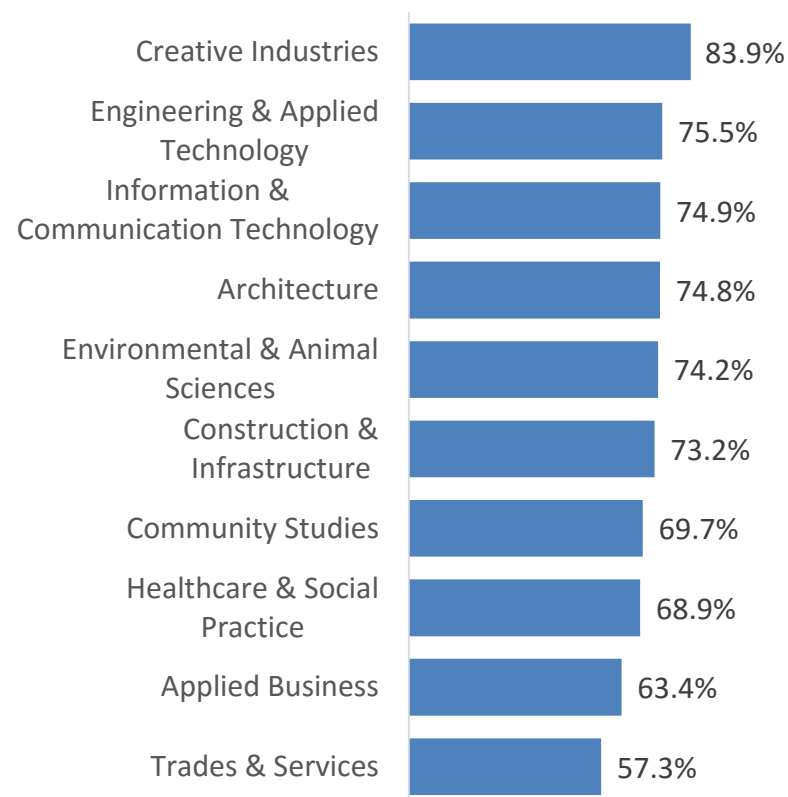


2017 Benchmarks*	1 st Year Retention Rate
Unitec	71.4%
University Sector Average	78.4%
ITP Sector Average	61.6%

Unitec First Year Retention Rate



2018 Unitec First Year Retention Rate by School



Bridgepoint excluded due to majority of programme/course duration being less than a full year

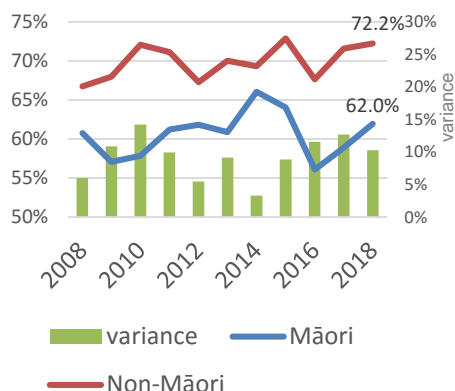
* ITP Sector benchmarking only available for 2017, 2018 benchmarks will be available April 2019

EPI #2: First Year Retention by Priority Groups

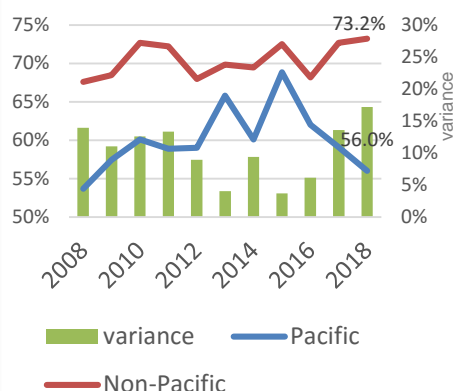
Unitec has higher disparity for Māori and Pacific students when compared to the ITP sector average and other major institutions in the region, though the difference has decreased in 2018. Pacific student retention rates continue to fall and the gap with non-pacific students is steadily increasing with it now at the highest level in the past 10 years. Māori Retention rates continue to climb, which is encouraging, while Under 25s continue to perform poorly relative to the 25+ students with the gap increasing steadily. International retention rates continue to exceed domestic rates though these have flattened relative to 2017.

Recommendation - Te Korowai Kahurangi to conduct detailed analysis of variances across all student performance areas

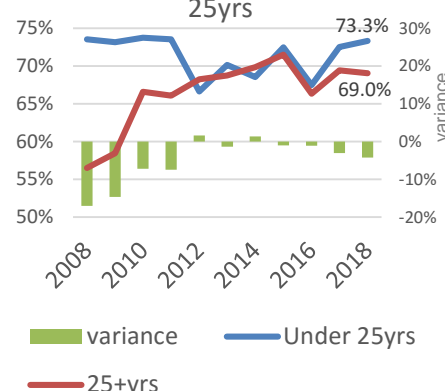
1st Year Retention - Māori



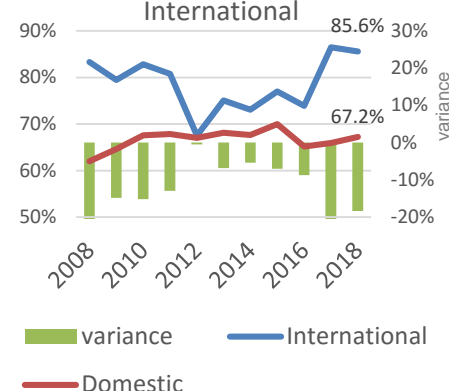
1st Year Retention - Pacific



1st Year Retention - Under 25yrs



1st Year Retention - International



2017 Benchmarks	Māori	Non-Māori	Variance
Unitec	58.9%	71.6%	12.7%
MIT	63.8%	66.4%	2.6%
AUT	71.5%	78.5%	7.0%
University of Auckland	77.4%	82.5%	5.1%
ITP Sector	53.9%	62.6%	8.7%

2017 Benchmarks	Pacific	Non-Pacific	Variance
Unitec	59.1%	72.7%	13.6%
MIT	62.1%	67.7%	5.6%
AUT	70.5%	79.3%	8.8%
University of Auckland	77.3%	82.6%	5.3%
ITP Sector	56.8%	61.9%	5.1%

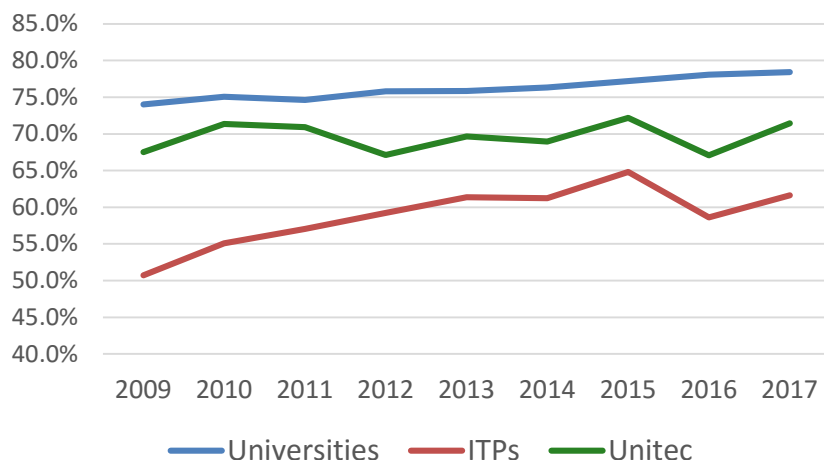
2017 Benchmarks	Under 25yrs	25+yrs	Variance
Unitec	59.1%	72.7%	13.6%
MIT	62.1%	67.7%	5.6%
AUT	70.5%	79.3%	8.8%
University of Auckland	77.3%	82.6%	5.3%
ITP Sector	56.8%	61.9%	5.1%

2017 Benchmarks	International	Domestic	Variance
Unitec	86.4%	65.9%	-20.5%
MIT	74.7%	64.1%	-10.6%
AUT	91.1%	76.1%	-15.0%
University of Auckland	90.3%	81.2%	-9.1%
ITP Sector	73.5%	59.2%	-14.3%

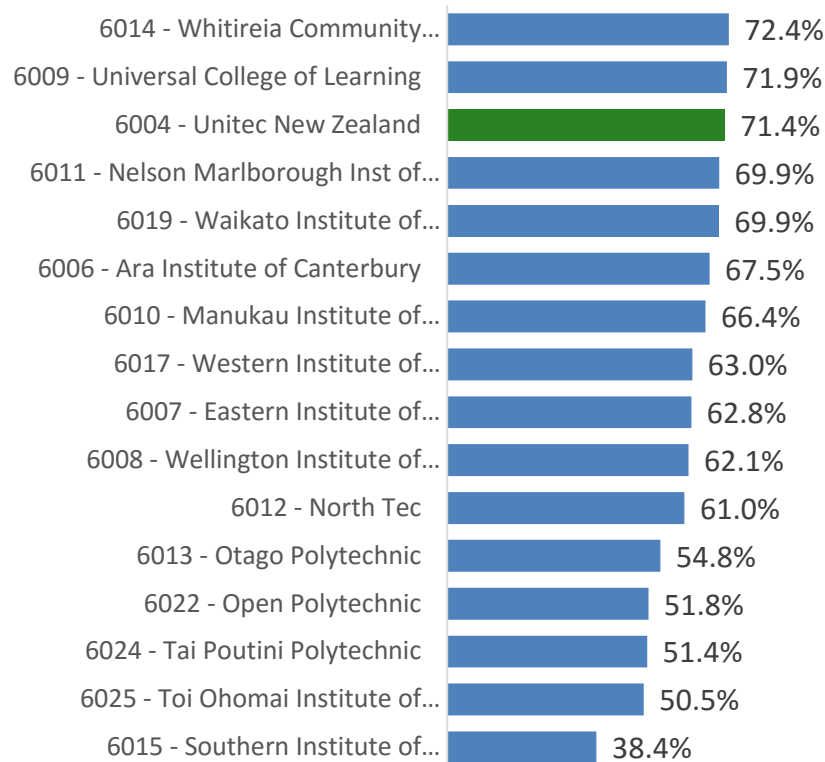
EPI #2: First Year Retention Benchmarking

Unitec tracks well above the ITP average for first year retention and was ranked 3rd of all ITPs in 2017. The data suggests that Unitec first year retention rates are influenced similarly to the sector.

1st Year Retention Rate



2017 1st Year Retention Rate - ITPs

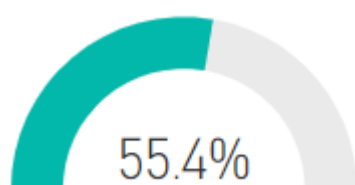


EPI #3: Qualification Completion

2018 qualification completion rates have declined in 2018 following steady growth over the past 4 years. As per course completion, this is likely impacted by processing of grades rather than actual student academic performance.

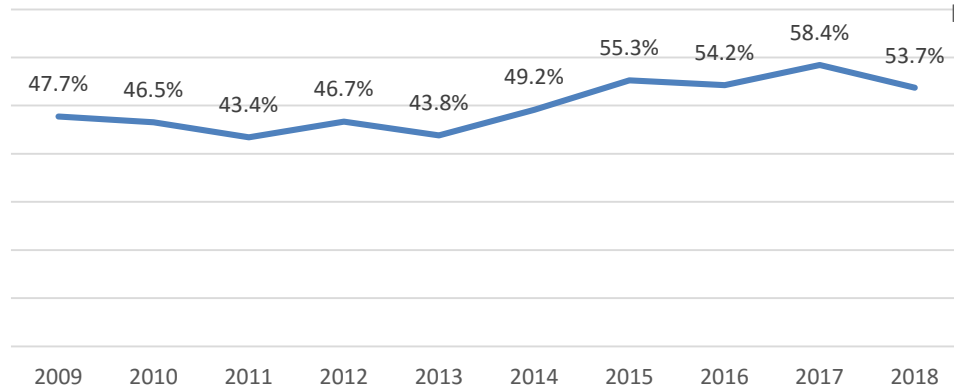
Recommendation – include qualification completion processing as part of the wider grade approval process review to speed up the process of eligibility as well as maintaining accuracy and quality

2018 Unitec Qualification Completion Rate



2018 Investment
Plan Target TBC

Unitec Qualification Completion Rate



2018 Qualification Completion Rate by School



EPI #3: Qualification Completion by Priority Groups

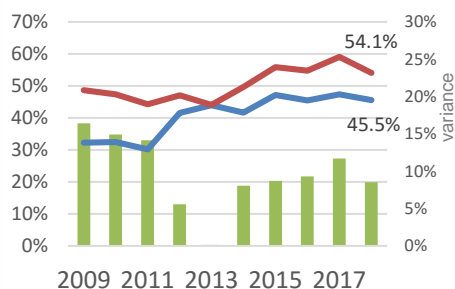
Pacific students have shown a significant decline in qualification completion in 2018 following steady growth and relatively consistent variance between Pacific and non-Pacific.

Disparity for Māori and Pacific students compared to non-Māori and non-Pacific students is higher at Unitec compared to the ITP average and MIT, while for Under25s there is little difference within Unitec or across the sector.

International qualification completion rates have remained steady in 2018 while the variance has increased significantly due to low domestic achievement.

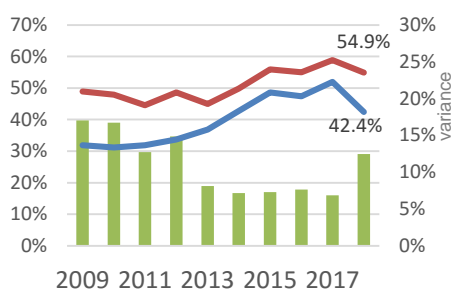
More analysis needs to be undertaken to identify if this is a grade process driven trend or actual student performance.

Qual Completion - Māori



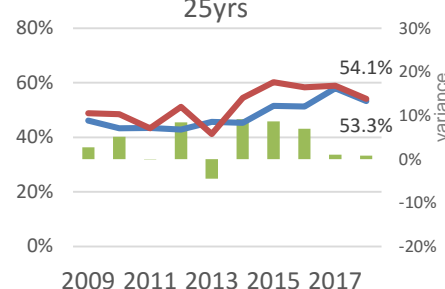
variance Māori
Non-Māori

Qual Completion - Pacific



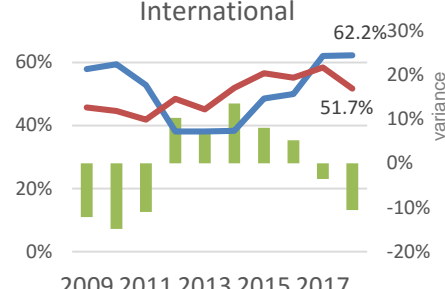
variance Pacific
Non-Pacific

Qual Completion - Under 25yrs



variance Under 25yrs
25+yrs

Qual Completion - International



variance International
Domestic

2017 Benchmarks	Māori	Non-Māori	Variance
Unitec	47.4%	59.0%	11.6%
MIT	52.5%	54.6%	2.1%
AUT	56.6%	65.1%	8.5%
University of Auckland	58.2%	69.3%	11.1%
ITP Sector	49.6%	53.7%	4.1%

2017 Benchmarks	Pacific	Non-Pacific	Variance
Unitec	52.0%	58.9%	6.9%
MIT	51.9%	55.1%	3.2%
AUT	48.1%	66.3%	18.2%
University of Auckland	53.3%	70.1%	16.8%
ITP Sector	51.3%	53.1%	1.8%

2017 Benchmarks	Under 25yrs	25+yrs	Variance
Unitec	57.9%	59.0%	1.1%
MIT	53.7%	55.4%	1.7%
AUT	64.8%	64.5%	-0.3%
University of Auckland	69.7%	67.1%	-2.6%
ITP Sector	54.5%	51.8%	-2.7%

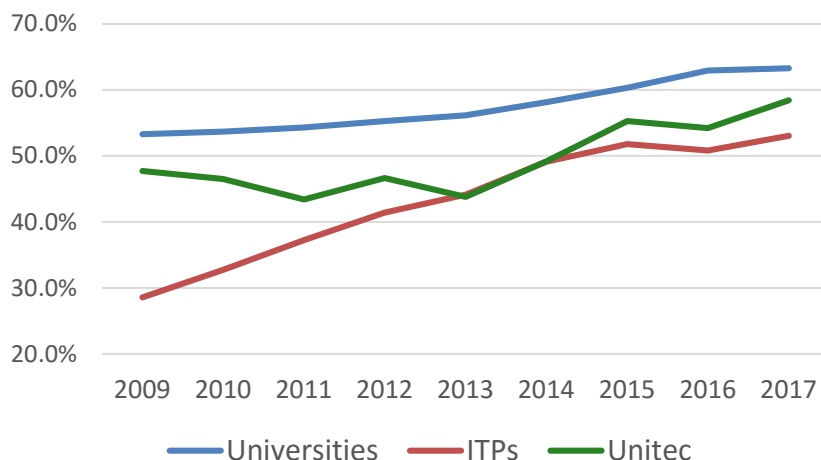
2017 Benchmarks	International	Domestic	Variance
Unitec	62.0%	57.6%	-4.4%
MIT	64.0%	53.7%	-10.3%
AUT	77.5%	62.3%	-15.2%
University of Auckland	75.3%	68.0%	-7.3%
ITP Sector	65.2%	51.8%	-13.4%

EPI #3: Qualification Completion Benchmarking

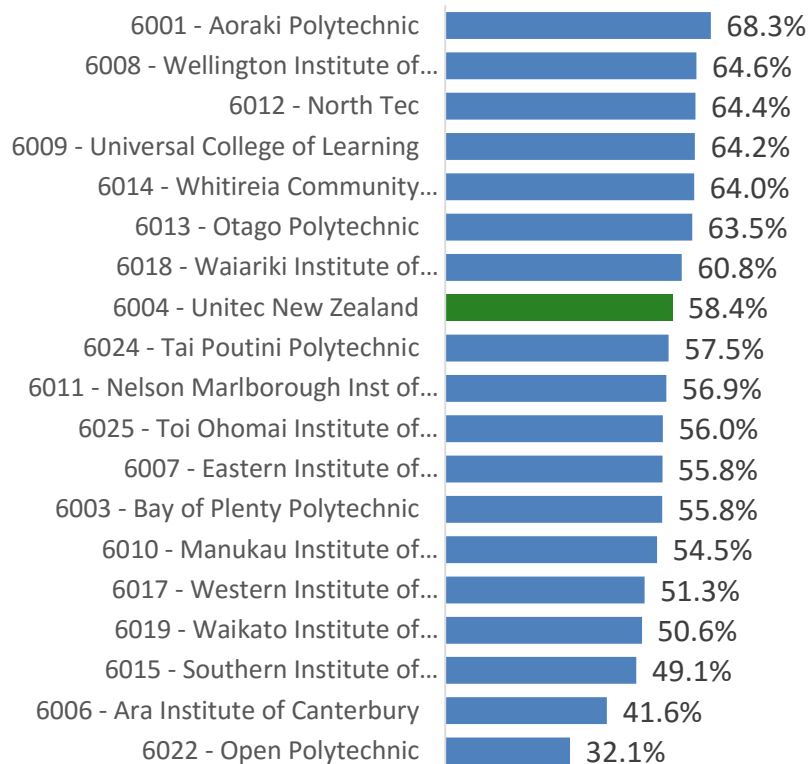
Despite the recent dip in 2018, Unitec continues to improve up to 2017 (the period that benchmarking is available) for qualification completion which is in line with other ITPs and universities. In 2017, Unitec was ranked 8th across all other ITPs on this measure.

Unitec's 2018 qualification completion rates are 3% lower which would place Unitec below the sector average.

Qualification Completion Rate



2017 Qualification Completion Rate - ITPs





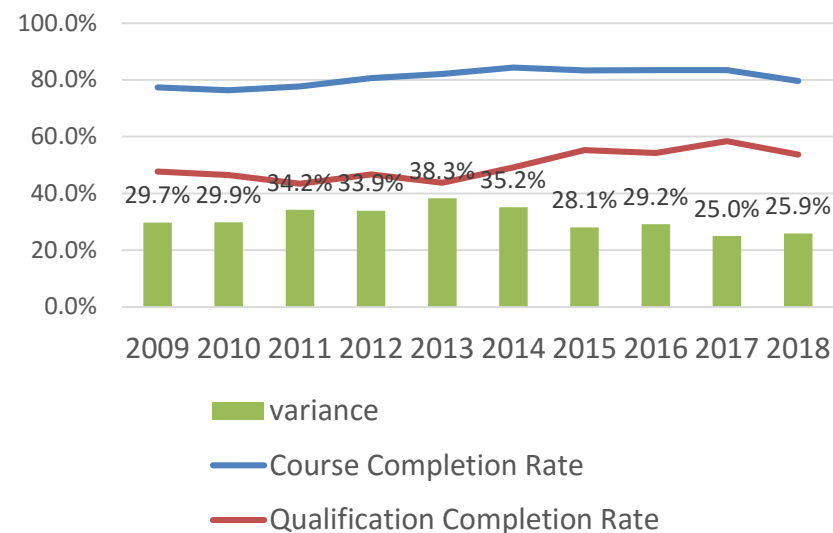
The difference between course completion and qualification completion

Unitec has consistently shown a 25-30% variance between course completion rates and qualification completion. This is a level that is consistent across the ITP sector and universities. Analysis by intended qualification shows that the variance is much higher amongst Architecture and Education qualifications.

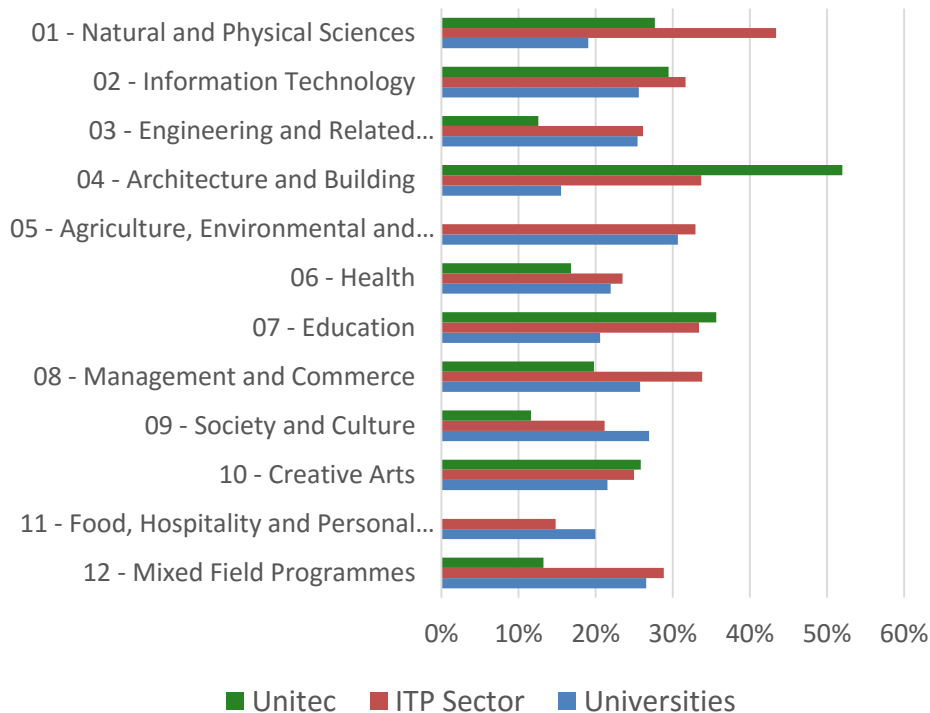
Recommendation – Te Korowai Kahurangi to conduct detailed analysis into this area to understand drivers for the variance between course and qualification completion rates

2017 Benchmarking	Course Completion Rate	Qualification Completion Rate	Variance
Unitec	83.4%	58.4%	25.0%
ITP Sector Average	81.7%	53.1%	28.6%
Universities Average	87.2%	63.3%	23.9%

Unitec Course Completion vs Qualification Completion



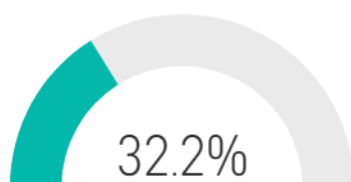
Course vs Qualification Completion Variance by Intended Qualification



EPI #4: Progression from Level 1-4

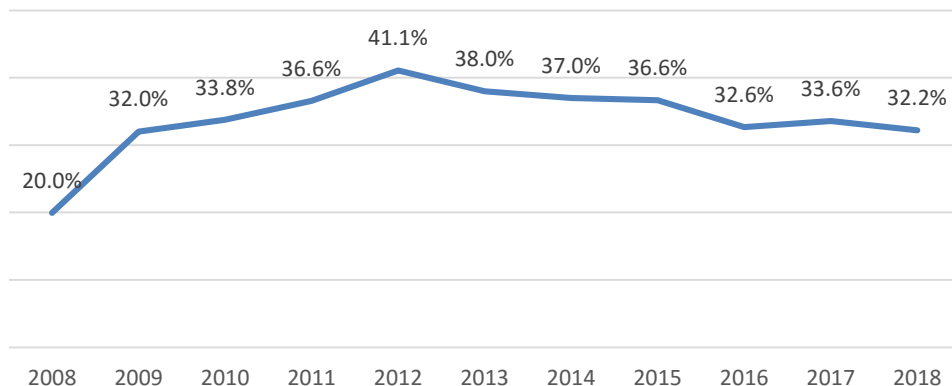
Unitec's progression rate has dipped slightly in 2018 and continues the long term decline since 2012. Further analysis will be conducted into these trends once reporting has been built and the new school groupings can be reported on.

2018 Unitec Progression Rate



2018 Investment Plan Target TBC

Unitec Progression Rate



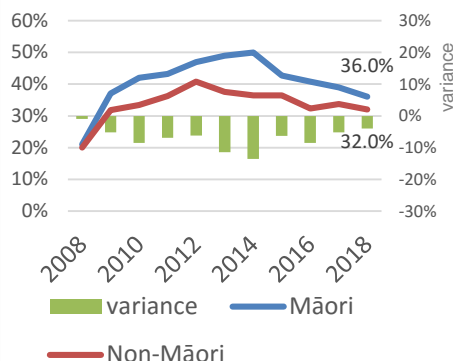
Progression Rates by School, not currently available

EPI #4: Progression from Levels 1-4 by Priority Groups

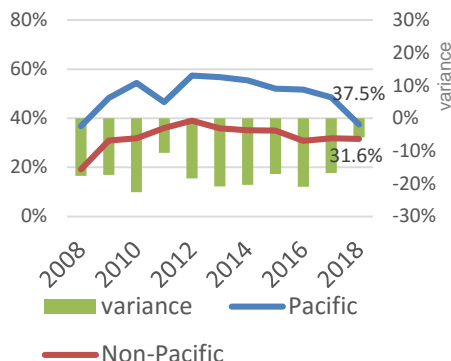
Similar to the other EPI metrics, there has been a decline in progression levels for Pacific students in 2018. This trend closes the gap normally shown between Pacific and non-Pacific students that Unitec historically leads over other ITPs and universities.

Progression rates for International students continues to increase while domestic progression rates are much lower and slowly decreasing in comparison.

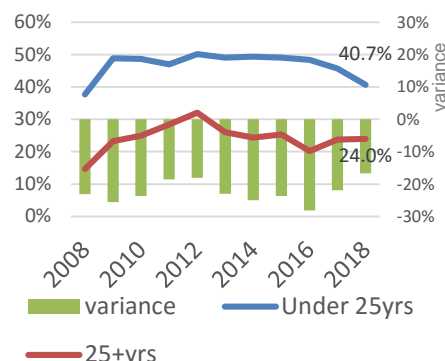
Progression from levels 1-4
- Māori



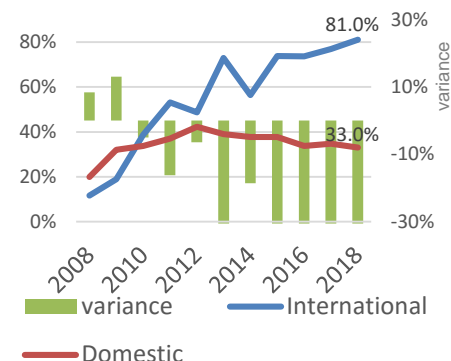
Progression from levels 1-4
- Pacific



Progression from levels 1-4
- Under 25yrs



Progression from levels 1-4
- International



2017 Benchmarks	Māori	Non-Māori	Variance
Unitec	39.0%	33.7%	-5.3%
MIT	40.9%	40.1%	-0.8%
AUT	82.5%	85.3%	2.8%
University of Auckland	92.2%	90.4%	-1.8%
ITP Sector	36.9%	33.7%	-3.2%

2017 Benchmarks	Pacific	Non-Pacific	Variance
Unitec	48.5%	31.8%	-16.7%
MIT	40.9%	39.8%	-1.1%
AUT	88.1%	83.3%	-4.8%
University of Auckland	94.5%	88.0%	-6.5%
ITP Sector	36.9%	34.1%	-2.8%

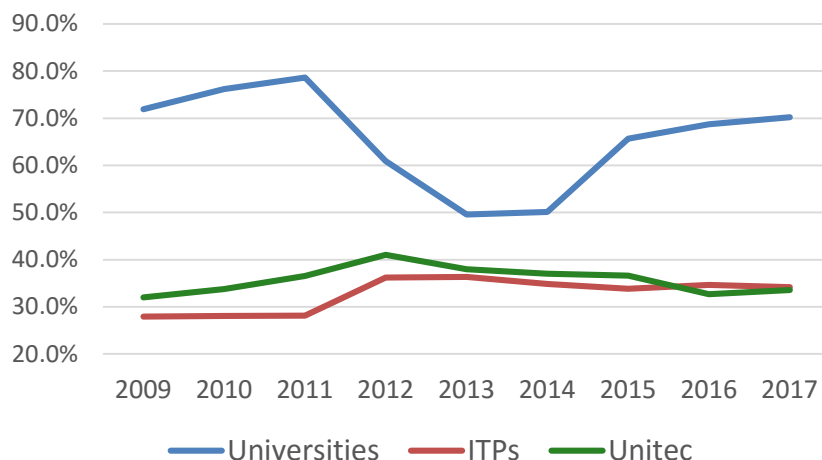
2017 Benchmarks	Under 25yrs	25+yrs	Variance
Unitec	45.7%	23.7%	-22.0%
MIT	42.8%	37.8%	-5.0%
AUT	85.8%	77.4%	-8.4%
University of Auckland	90.8%	81.5%	-9.3%
ITP Sector	40.5%	29.5%	-11.0%

2017 Benchmarks	International	Domestic	Variance
Unitec	77.0%	34.7%	-42.3%
MIT	66.5%	42.8%	-23.7%
AUT	93.6%	84.9%	-8.7%
University of Auckland	95.4%	90.0%	-5.4%
ITP Sector	67.3%	35.0%	-32.3%

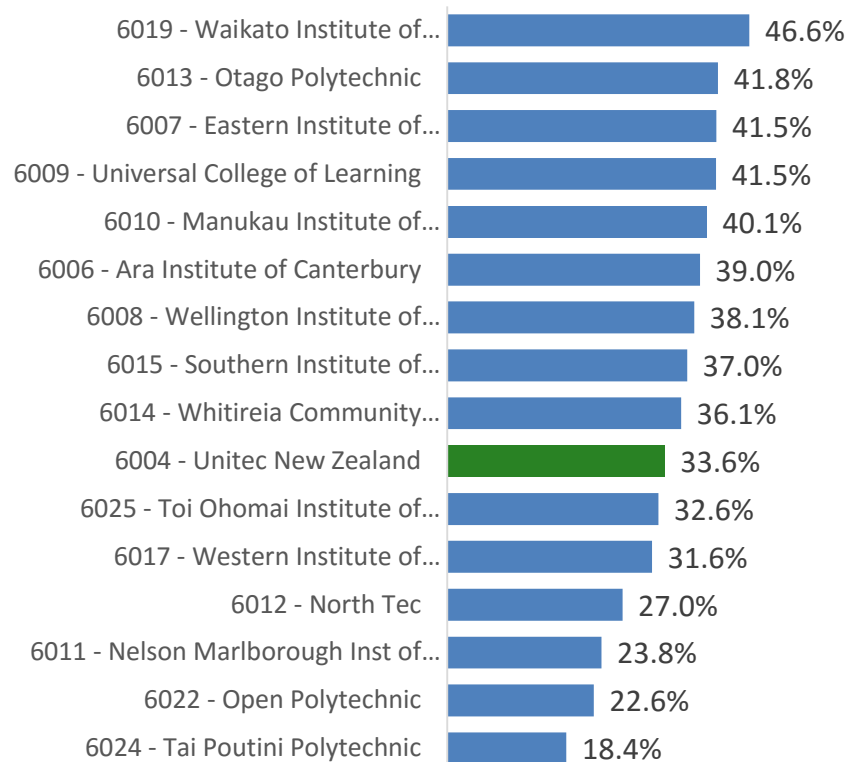
EPI #4: Progression from Level 1-4

Unitec's progression rates are in line with the ITP average and well below the average for universities. In 2017, Unitec was ranked 10th of all ITPs which is the lowest ranking shown across all four EPI measures.

Progression Rate



2017 Progression Rate - ITPs

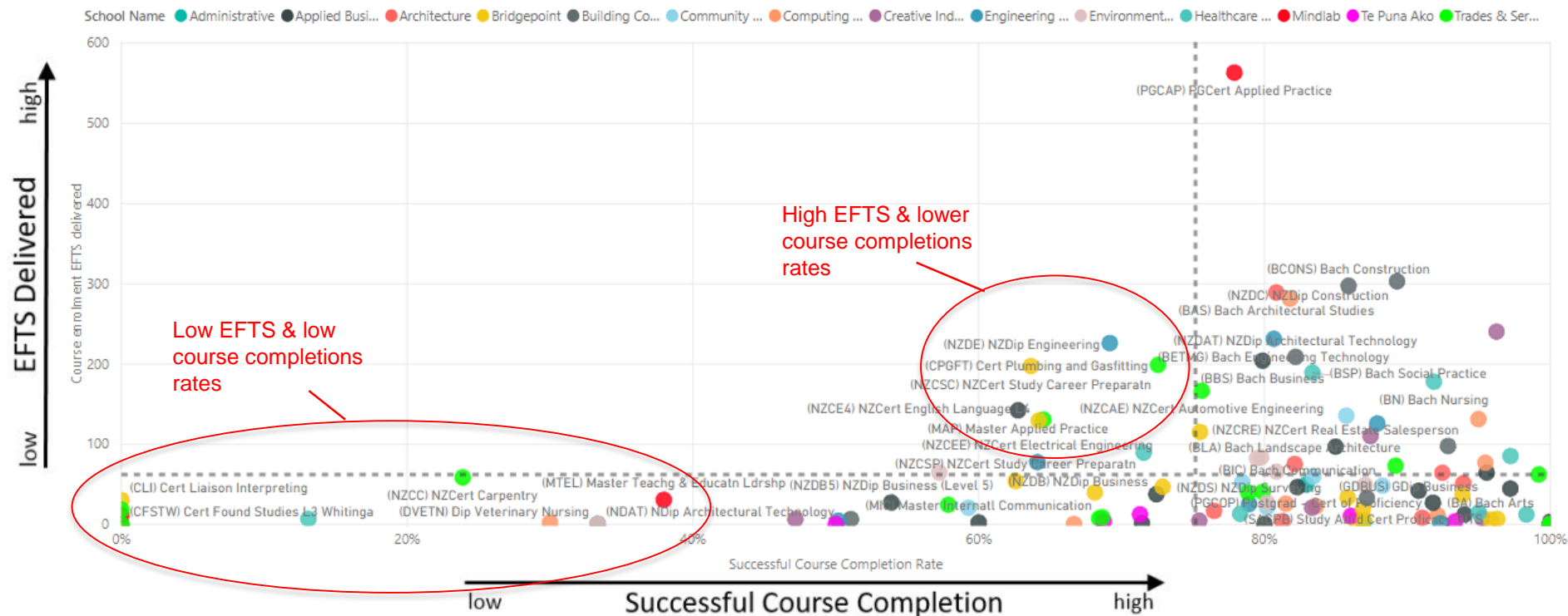


Programme Priority Matrix – Total students

This matrix plots each programme's value (number of EFTS delivered) by performance (successful course completion rate) so that you can visually see which programmes need priority attention. Those positioned top left are considered a priority (higher value with lower performance when compared to other programmes in each school) while those top right are considered strong performers (high value with high performance).

For total students, the programmes with the highest EFTS delivered coupled by relatively lower course completion rates are NZDip Engineering, NZCert Study Career Preparation and Master Applied Business.

Successful Course Completion by EFTS Delivered Priority Matrix





2018 Total Student Successful Course Completions Rates

2018 Total Students Course Completion Rates

School Name	Programme Code And Name	Total Student Headcount	Successful Course Completion Rate
Administrative	(SACPB) Study Abrd Cert Proficiency BITS	8	87.0%
	(PGCOP) Postgrad - Cert of Proficiency	206	82.9%
	(DPRAC) Dip Professional Accountancy	3	100.0%
Applied Business	(GDEC) GDip Event Communication	4	100.0%
	(GDNPM) GDip Not for Profit Mgt	1	100.0%
	(PGDBS) PGDip Business	70	97.2%
	(GDBUS) GDip Business	106	95.6%
	(MBUS) Master Business	22	94.0%
	(NZCR) NZ Cert Retail	70	91.8%
	(GDPA) GDip Professional Accountancy	68	90.8%
	(NZCRE) NZCert Real Estate Salesperson	233	85.0%
	(BIC) Bach Communication	58	82.3%
	(GCPA) GCert Professional Accountancy	3	80.0%
	(BBS) Bach Business	350	79.9%
	(NZDB) NZDip Business	62	72.4%
	(PGDIC) PGDip Inter Communic	3	71.4%
	(MAP) Master Applied Practice	209	62.8%
	(MIC) Master Internatl Communication	7	60.0%
	(NZDB5) NZDip Business (Level 5)	53	53.9%
Architecture	(DID) Dip Applied Interior Design	73	93.9%
	(MARCP) Master Architecture Professional	152	92.4%
	(NZCLD) NZCert Horticulture Services	22	91.0%
	(BLA) Bach Landscape Architecture	85	82.1%
	(OLD) Dip Landscape Design	6	81.3%
	(BAS) Bach Architectural Studies	332	80.8%
	(NZDL) NZDip Landscape	28	76.5%
Bridgepoint	(NZCLT) NZCert Language Teaching	15	96.3%
	(BA) Bach Arts	6	95.8%
	(NZCE5) NZCert English Language L5	87	93.9%
	(CLT) Cert Language Teaching	16	87.0%
	(NZCSL) NZCert Skills Living & Working	52	86.9%
	(NCEG4) NZCert English Lang General L4	11	86.4%
	(NCEA3) NZCert English Lang Applied L3	77	85.8%
	(CUP) Cert University Preparation	239	75.5%
	(NZCE3) NZCert English Language L3	108	72.9%
	(NZCE2) NZCert English Language L2	74	68.1%
	(NZCE4) NZCert English Language L4	251	64.2%
	(NZCSC) NZCert Study Career Preparatn	475	63.7%
	(NZCSP) NZCert Study Career Preparatn	108	62.6%
	(CFSTW) Cert Found Studies L3 Whitinga	1	0.0%
	(CLI) Cert Liaison Interpreting	61	0.0%
Building Construction	(NDQS) NDip Quantity Surveying	2	100.0%
	(GDCPM) GDip Constructn Project Mgemnt	155	92.8%
	(NZDC) NZDip Construction	467	89.3%
	(DATB) Dip Applied Technology Buildg	67	87.2%
	(BCONS) Bach Construction	400	85.9%
	(NZDAT) NZDip Architectural Technology	290	82.2%
	(NZCCM) NZCert Const Rltd Trd Main Sup	19	51.1%
Community Studies	(NDAT) NDip Architectural Technology	2	33.3%
	(BASHB) Bach Applied Science/Human Bio	56	88.3%
	(BTECE) Bach Teaching Early Childhd Ed	172	85.7%
	(BHSD) Bach Health Social Development	77	83.4%
	(MOST) Master Osteopathy	49	80.2%
	(BSPT) Bach Sport	72	78.4%
	(DSSM) Dip Sport & Fitness Education	27	59.3%

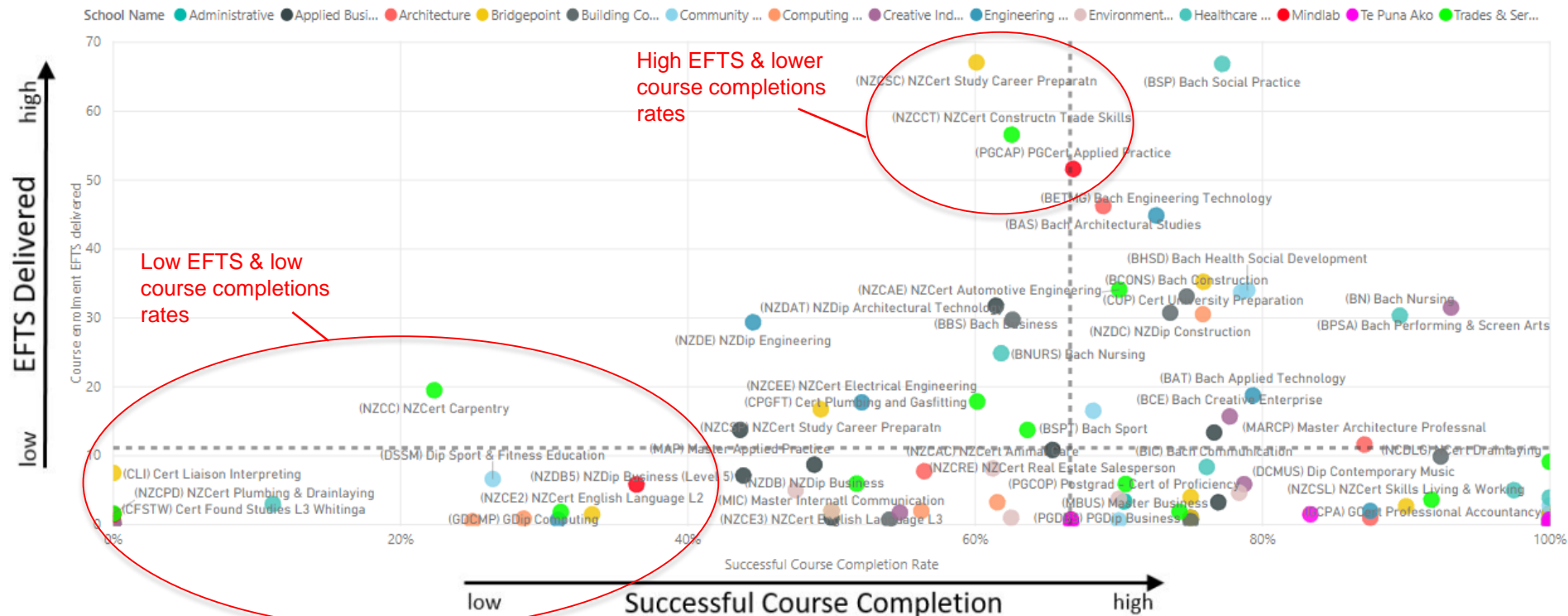
School Name	Programme Code And Name	Total Student Headcount	Successful Course Completion Rate
Computing & Information Technology	(PGDCG) PGDip Computing	125	95.5%
	(GDCMP) GDip Computing	210	95.0%
	(MCOMP) Master Computing	31	92.1%
	(NZCIT) NZCert Info Tech Essentials	49	83.6%
	(BCS) Bach Computing Systems	352	81.8%
	(DITS) Dip Information Technology Supt	36	81.5%
	(CCINT) Cert Information Technology	2	66.7%
	(DCOMP) Doctor of Computing	16	30.0%
Creative Industries	(BDVA) Bach Design and Visual Arts	3	100.0%
	(GDDES) GDip Creative Practice	1	100.0%
	(PGCCP) PGCert Creative Practice	2	100.0%
	(BPSA) Bach Performing & Screen Arts	247	96.2%
	(PGDCP) PGDip Creative Practice	13	95.2%
	(BCE) Bach Creative Enterprise	128	87.4%
	(DCMUS) Dip Contemporary Music	28	83.3%
	(CDVA) Cert Design and Visual Arts	10	75.4%
	(MCP) Master Creative Practice	12	47.2%
	(CMUSI) Cert Music (Introductory)	1	0.0%
Engineering & Applied Technology	(NDSYG) NDip Surveying	5	92.3%
	(BAT) Bach Applied Technology	162	87.9%
	(BETMG) Bach Engineering Technology	316	80.7%
	(NZDS) NZDip Surveying	39	78.9%
	(NZDE) NZDip Engineering	305	69.2%
	(NZCEE) NZCert Electrical Engineering	127	64.1%
	(NCEE2) NCert Electrical Eng (Level 2)	85	50.2%
Environmental & Animal Sciences	(CAMGT) Cert Animal Management	1	100.0%
	(NZDVN) NZDip Veterinary Nursing	64	87.0%
	(NZCAM) NZCert Animal Management	71	80.8%
	(CANWI) Cert Animal Welfare Investgtns	29	80.2%
	(BASCI) Bach Applied Science	115	79.8%
	(NZCAT) NZCert Animal Technology	95	79.5%
	(NZCAC) NZCert Animal Care	120	57.2%
Healthcare & Social Practice	(DVETN) Dip Veterinary Nursing	2	33.3%
	(NCMHA) NCert Mental Hlth Addictn Supt	26	98.3%
	(BHSMI) Bach Health Sci/Medical Imagin	92	97.2%
	(PGDCN) PGDip Counselling	21	95.0%
	(BN) Bach Nursing	228	91.9%
	(BSP) Bach Social Practice	214	83.4%
	(BSOCP) Bach Social Practice	22	78.3%
Mindlab	(BNURS) Bach Nursing	129	71.5%
	(NZCHW) NZCert Health Wellbeing SocCom	14	13.1%
	(PGCAP) PGCert Applied Practice	1508	77.9%
	(MTL) Master Teachg & Educatn Ldrshp	44	38.0%
Te Puna Ako	(MCE) Master Contemporary Education	61	0.0%
	(PGCEL) PGCert Educational Ldrshp & Mgt	12	93.3%
	(PGDSM) PGDip Educational Ldrshp & Mgt	21	86.0%
	(MEDM) Master Educational Ldrshp Mgt	31	71.3%
Trades & Services	(GDHE) GDip Higher Education	14	68.8%
	(PGDAP) PGDip Applied Practice	2	50.0%
	(CAME) Cert Automotive Mechanical Eng	1	100.0%
	(NCPULU) NCert Plumbing	1	100.0%
	(NCDLG) NCert Drainlaying	84	99.2%
	(CCSS) Cert Construction Site Safety	716	89.2%
	(NCAEN) NCert Motor Ind/Auto Engin	108	79.9%
	(NZCPG) NZCert Plumb Gasfit Drainlay	64	78.9%
	(NZCAE) NZCert Automotive Engineering	350	75.6%
	(CPGFT) Cert Plumbing and Gasfitting	211	72.6%
	(CATEC) Cert Applied Technology	22	68.6%
	(NCAEE) NCert Motor Ind/Auto Elec Eng	45	68.4%
	(NZCCT) NZCert Constructn Trade Skills	265	64.5%
	(NZCME) NZCert Mechanical Engineering	35	57.9%
	(NZCC) NZCert Carpentry	106	23.9%

Programme Priority Matrix – Pacific students

This matrix plots each programme's value (number of EFTS delivered) by performance (successful course completion rate) so that you can visually see which programmes need priority attention. Those positioned top left are considered a priority (higher value with lower performance when compared to other programmes in each school) while those top right are considered strong performers (high value with high performance).

For Pacific students, the programmes with the highest Pacific EFTS delivered coupled by relatively lower course completion rates are NZCert Study Career Preparation, NZCert Construction Trade Skills & PGCert Applied Practice.

Successful Course Completion by EFTS Delivered Priority Matrix





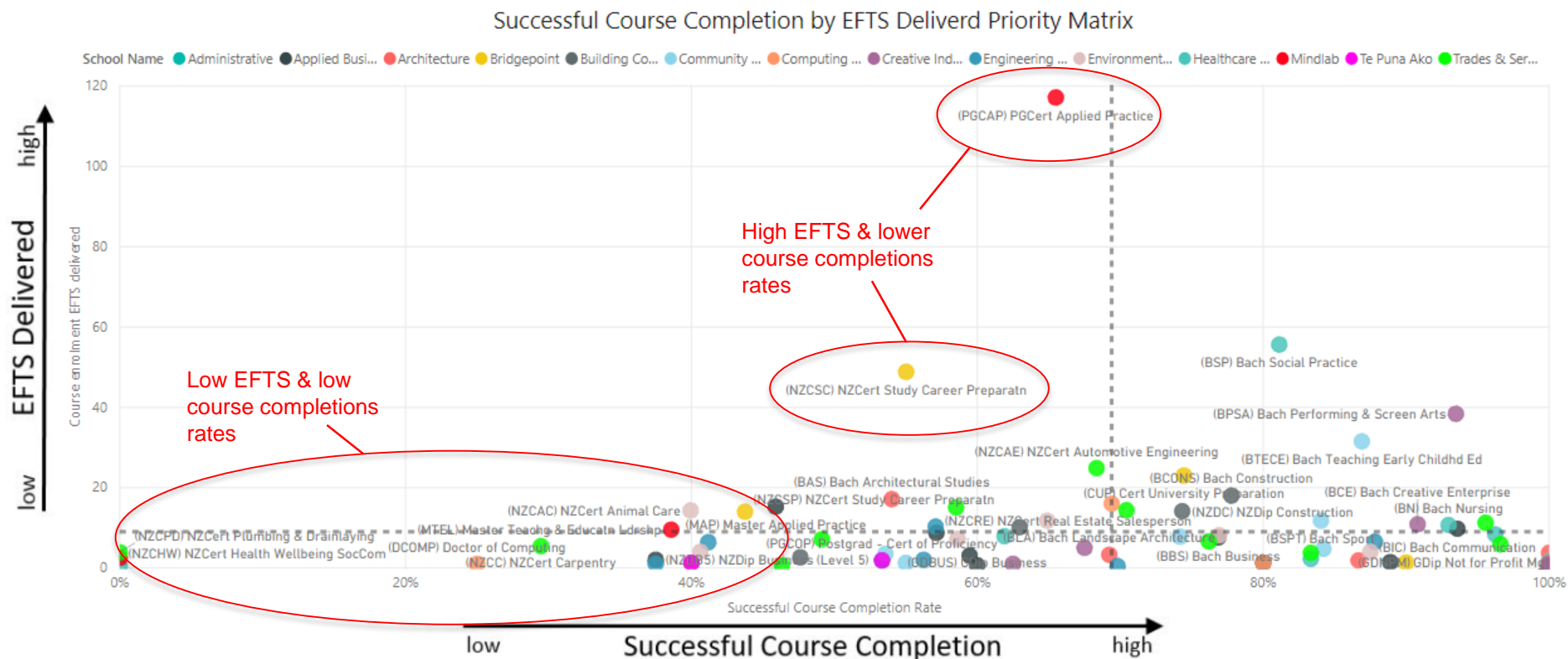
2018 Pacific Successful Course Completions Rates

2018 Pacific Student Course Completion Rates

School Name	Programme Code And Name	Pacific Student Headcount	Successful Course Completion Rate
Administrative	(PGCOP) Postgrad - Cert of Proficiency	16	70.4%
	(GCPA) GCert Professional Accountancy	1	100.0%
Applied Business	(GDBUS) GDip Business	3	100.0%
	(GDPA) GDip Professional Accountancy	1	100.0%
	(NZCR) NZ Cert Retail	4	100.0%
	(MBUS) Master Business	4	76.9%
	(BIC) Bach Communication	17	76.6%
	(PGDBS) PGDip Business	2	75.0%
	(NZCRE) NZCert Real Estate Salesperson	26	65.4%
	(BBS) Bach Business	56	61.4%
	(MIC) Master Internatl Communication	1	50.0%
	(NZDB) NZDip Business	17	48.8%
	(NZDB5) NZDip Business (Level 5)	15	43.9%
	(MAP) Master Applied Practice	22	43.6%
Architecture	(NZCLD) NZCert Horticulture Services	2	100.0%
	(DID) Dip Applied Interior Design	1	87.5%
	(MARCP) Master Architecture Professnal	21	87.1%
	(BAS) Bach Architectural Studies	59	68.9%
Bridgepoint	(BLA) Bach Landscape Architecture	10	56.5%
	(CLT) Cert Language Teaching	1	100.0%
	(NZCE5) NZCert English Language L5	3	100.0%
	(NZCLT) NZCert Language Teaching	1	100.0%
	(NZCSL) NZCert Skills Living & Working	12	90.0%
	(CUP) Cert University Preparation	76	75.9%
	(NCEA3) NZCert English Lang Applied L3	2	75.0%
	(NZCE4) NZCert English Language L4	7	75.0%
	(NZCSC) NZCert Study Career Preparatn	150	60.1%
	(NZCE3) NZCert English Language L3	4	50.0%
	(NZCSP) NZCert Study Career Preparatn	33	49.3%
	(NZCE2) NZCert English Language L2	3	33.3%
	(CFSTW) Cert Found Studies L3 Whitinga	1	0.0%
	(CLI) Cert Liaison Interpreting	15	0.0%
	(DATB) Dip Applied Technology Buildg	18	92.4%
Building Construction	(GDCPM) GDip Constructn Project Mgemnt	1	75.0%
	(BCONS) Bach Construction	48	74.7%
	(NZDC) NZDip Construction	51	73.6%
	(NZDAT) NZDip Architectural Technology	43	62.6%
	(NZCCM) NZCert Const Rltd Trd Main Sup	2	54.0%
	(NDAT) NDip Architectural Technology	1	0.0%
Community Studies	(BASHB) Bach Applied Science/Human Bio	3	100.0%
	(BHSD) Bach Health Social Development	43	78.9%
	(BTECE) Bach Teaching Early Childhd Ed	49	78.5%
	(MOST) Master Osteopathy	2	70.0%
	(BSPT) Bach Sport	27	68.2%
	(DSSM) Dip Sport & Fitness Education	10	26.4%

School Name	Programme Code And Name	Pacific Student Headcount	Successful Course Completion Rate
Computing & Information Technology	(BCS) Bach Computing Systems	34	75.9%
	(CCINT) Cert Information Technology	2	66.7%
	(NZCIT) NZCert Info Tech Essentials	8	61.5%
	(DITS) Dip Information Technology Supt	2	56.3%
	(GDCMP) GDip Computing	2	28.6%
	(PGDCG) PGDip Computing	1	25.0%
Creative Industries	(BDVA) Bach Design and Visual Arts	2	100.0%
	(MCP) Master Creative Practice	1	100.0%
	(BPSA) Bach Performing & Screen Arts	34	93.1%
	(DCMUS) Dip Contemporary Music	6	78.7%
	(BCE) Bach Creative Enterprise	21	77.7%
	(CDVA) Cert Design and Visual Arts	4	54.8%
Engineering & Applied Technology	(CMUSI) Cert Music (Introductory)	1	0.0%
	(NDSYG) NDip Surveying	1	100.0%
	(NZDS) NZDip Surveying	4	87.5%
	(BAT) Bach Applied Technology	27	79.3%
	(BETMG) Bach Engineering Technology	60	72.6%
	(NZCEE) NZCert Electrical Engineering	26	52.1%
	(NZDE) NZDip Engineering	44	44.5%
	(NCEE2) NCert Electrical Eng (Level 2)	6	31.0%
	(CAMGT) Cert Animal Management	1	100.0%
	(BASCI) Bach Applied Science	6	78.4%
Environmental & Animal Sciences	(NZDVN) NZDip Veterinary Nursing	5	70.0%
	(CANWI) Cert Animal Welfare Investgtns	1	62.5%
	(NZCAC) NZCert Animal Care	14	61.2%
	(NZCAM) NZCert Animal Management	2	50.0%
	(NZCAT) NZCert Animal Technology	5	47.5%
	(NCMHA) NCert Mental Hlth Addictn Supt	8	100.0%
Healthcare & Social Practice	(PGDCN) PGDip Counselling	1	100.0%
	(BHSMI) Bach Health Sci/Medical Imagin	5	97.5%
	(BN) Bach Nursing	39	89.6%
	(BSP) Bach Social Practice	77	77.2%
	(BSOCP) Bach Social Practice	13	76.1%
	(BNURS) Bach Nursing	40	61.8%
	(NZCHW) NZCert Health Wellbeing SocCom	6	11.1%
	(PGCAP) PGCert Applied Practice	148	66.8%
Mindlab	(MTL) Master Teachg & Educatn Ldrshp	9	36.4%
	(MCE) Master Contemporary Education	6	0.0%
Te Puna Ako	(PGDAP) PGDip Applied Practice	1	100.0%
	(PGDSM) PGDip Educational Ldrshp & Mgt	1	100.0%
	(MEDM) Master Educational Ldrshp Mgt	4	83.3%
	(GDHE) GDip Higher Education	1	66.7%
	(PGCEL) PGCert Educationl Ldrshp & Mgt	2	66.7%
Trades & Services	(NCDLG) NCert Drainlaying	13	100.0%
	(CCSS) Cert Construction Site Safety	37	91.8%
	(NCAEE) NCert Motor Ind /Auto Elec Eng	11	74.2%
	(NCAEN) NCert Motor Ind/Auto Engin	18	70.5%
	(NZCAE) NZCert Automotive Engineering	82	70.0%
	(NZCPG) NZCert Plumb Gasfit Drainlay	22	63.6%
	(NZCCT) NZCert Constructn Trade Skills	120	62.5%
	(CPGFT) Cert Plumbing and Gasfitting	19	60.1%
	(NZCME) NZCert Mechanical Engineering	8	51.7%
	(CATEC) Cert Applied Technology	6	31.2%
	(NZCC) NZCert Carpentry	38	22.3%
	(NZCPD) NZCert Plumbing & Drainlaying	15	0.0%

For Māori students, the programmes with the highest Māori EFTS delivered coupled by relatively lower course completion rates are PGCert Applied Practice and NZCert Study Career preparation.





2018 Māori Successful Course Completions Rates

2018 Māori Student Course Completion Rates

School Name	Programme Code And Name	Māori Student Headcount	Successful Course Completion Rate
Administrative	(PGCOP) Postgrad - Cert of Proficiency	12	53.3%
Applied Business	(GDNPM) GDip Not for Profit Mgt	1	100.0%
	(BIC) Bach Communication	11	93.6%
	(NZCR) NZ Cert Retail	4	88.9%
	(MBUS) Master Business	2	80.0%
	(BBS) Bach Business	14	76.9%
	(GDBUS) GDip Business	3	60.0%
	(NZDB) NZDip Business	4	59.5%
	(NZCRE) NZCert Real Estate Salesperson	21	57.1%
	(MAP) Master Applied Practice	25	45.9%
Architecture	(NZDB5) NZDip Business (Level 5)	4	37.5%
	(MARCP) Master Architecture Professnal	7	100.0%
	(NZCLD) NZCert Horticulture Services	2	100.0%
	(NZDL) NZDip Landscape	1	100.0%
	(DID) Dip Applied Interior Design	5	86.7%
	(BLA) Bach Landscape Architecture	4	69.2%
	(BAS) Bach Architectural Studies	21	54.0%
	(NZCSL) NZCert Skills Living & Working	4	90.0%
	(CUP) Cert University Preparation	45	74.5%
Bridgepoint	(NZCSC) NZCert Study Career Preparatn	127	55.0%
	(NZCSP) NZCert Study Career Preparatn	28	43.8%
Building Construction	(GDCPM) GDip Constructn Project Mgemnt	2	100.0%
	(BCONS) Bach Construction	25	77.8%
	(NZDC) NZDip Construction	25	74.3%
	(NZDAT) NZDip Architectural Technology	14	63.0%
	(DATB) Dip Applied Technology Buildg	4	47.6%
Community Studies	(BTECE) Bach Teaching Early Childhd Ed	39	86.9%
	(BASHB) Bach Applied Science/Human Bio	5	84.2%
	(BSPT) Bach Sport	15	84.0%
	(BHSD) Bach Health Social Development	12	74.2%
	(MOST) Master Osteopathy	2	55.0%
Computing & Information Technology	(DSSM) Dip Sport & Fitness Education	5	53.6%
	(DITS) Dip Information Technolgy Supt	1	100.0%
	(GDCMP) GDip Computing	3	100.0%
	(NZCIT) NZCert Info Tech Essentials	3	80.0%
	(BCS) Bach Computing Systems	19	69.4%
	(DCOMP) Doctor of Computing	1	25.0%

School Name	Programme Code And Name	Māori Student Headcount	Successful Course Completion Rate
Creative Industries	(GDDES) GDip Creative Practice	1	100.0%
	(PGDCP) PGDip Creative Practice	2	100.0%
	(BPSA) Bach Performing & Screen Arts	40	93.5%
	(BCE) Bach Creative Enterprise	12	90.8%
	(DCMUS) Dip Contemporary Music	7	67.5%
	(CDVA) Cert Design and Visual Arts	2	62.5%
	(MCP) Master Creative Practice	2	40.0%
Engineering & Applied Technology	(BETMG) Bach Engineering Technology	11	87.8%
	(NCEE2) NCert Electrical Eng (Level 2)	10	69.8%
	(NZDE) NZDip Engineering	15	57.1%
	(NZDS) NZDip Surveying	4	56.3%
	(NZCEE) NZCert Electrical Engineering	11	41.2%
	(BAT) Bach Applied Technology	2	37.5%
Environmental & Animal Sciences	(CAMGT) Cert Animal Management	1	100.0%
	(NZDVN) NZDip Veterinary Nursing	5	87.5%
	(BASCI) Bach Applied Science	13	76.9%
	(NZCAT) NZCert Animal Technology	13	64.9%
	(NZCAM) NZCert Animal Management	7	58.6%
	(CANWI) Cert Animal Welfare Investgtns	4	40.6%
	(NZCAC) NZCert Animal Care	29	39.9%
Healthcare & Social Practice	(NCMHA) NCert Mental Hlth Addictn Supt	2	100.0%
	(PGDCN) PGDip Counselling	2	100.0%
	(BHSMI) Bach Health Sci/Medical Imagin	9	96.2%
	(BN) Bach Nursing	14	93.0%
	(BSOCP) Bach Social Practice	4	83.3%
	(BSP) Bach Social Practice	64	81.1%
	(BNURS) Bach Nursing	12	61.9%
	(NZCHW) NZCert Health Wellbeing SocCom	1	0.0%
Mindlab	(PGCAP) PGCert Applied Practice	293	65.5%
	(MTEL) Master Teachg & Educatn Ldrshp	13	38.6%
	(MCE) Master Contemporary Education	14	0.0%
Te Puna Ako	(GDHE) GDip Higher Education	1	100.0%
	(PGCEL) PGCert Educationl Ldrshp & Mgt	2	100.0%
	(MEDM) Master Educational Ldrship Mgt	5	53.3%
	(PGDSM) PGDip Educational Ldrshp & Mgt	2	40.0%
Trades & Services	(CCSS) Cert Construction Site Safety	62	96.6%
	(NCDLG) NCert Drainlaying	15	95.6%
	(NZCPG) NZCert Plumb Gasfit Drainlay	6	83.3%
	(NCAEN) NCert Motor Ind/Auto Engin	18	76.2%
	(CPGFT) Cert Plumbing and Gasfitting	16	70.4%
	(NZCAE) NZCert Automotive Engineering	48	68.3%
	(NZCCT) NZCert Constructn Trade Skills	33	58.5%
	(NZCME) NZCert Mechanical Engineering	11	49.1%
	(NCAEE) NCert Motor Ind /Auto Elec Eng	5	46.3%
	(NZCC) NZCert Carpentry	11	29.5%
	(NZCPD) NZCert Plumbing & Drainlaying	14	0.0%

For students aged under 25yrs, the programmes with the highest EFTS delivered coupled by relatively lower course completion rates are NZCert Study Career Preparation and NZDip Engineering.

School Name

- Administrative
- Applied Business
- Architecture
- Bridgepoint
- Building Constr...
- Community Stu...
- Computing ...
- Creative Industries
- Engineering ...
- Environmental ...
- Healthcare ...
- Mindlab
- Trades & Servi...

Y-axis: EFTS Delivered (low to high)

X-axis: Successful Course Completion Rate (low to high)

Annotations:

- High EFTS & lower course completions rates
- Low EFTS & low course completions rates

Legend:

- (INZDE) NZDip Engineering
- (NZCSC) NZCert Study Career Preparatn
- (BAS) Bach Architectural Studies
- (BPSA) Bach Performing & Screen Arts
- (BCS) Bach Computing Systems
- (BCONS) Bach Construction
- (NZCAE) NZCert Automotive Engineering
- (BETMG) Bach Engineering Technology
- (NZDAT) NZDip Architectural Technology
- (BBS) Bach Business
- (NZDC) NZDip Construction
- (BCE) Bach Creative Enterprise
- (BN) Bach Nursing
- (CUP) Cert University Preparation
- (BSP) Bach Social Practice
- (BLA) Bach Landscape Architecture
- (INZCE4) NZCert English Language L4
- (INZCCT) NZCert Constructn Trade Skills
- (INZCAC) NZCert Animal Care
- (INZCSF) NZCert Study Career Preparatn
- (INZCAT) NZCert Animal Technology
- (BNURS) Bach Nursing
- (GDCPM) GDip Constructn Project Mgmt
- (INZCEE) NZCert Electrical Engineering
- (DSSM) Dip Sport & Fitness Education
- (INZDB) NZDip Business
- (INZCRE) NZCert Real Estate Salesperson
- (INZCC) NZCert Carpentry
- (INZDL) NZDip Landscape
- (INZDB5) NZDip Business (Level 5)
- (INZCE2) NZCert English Language L2
- (INZTEC) Cert Applied Technology
- (SACPB) Study Abrd Cert Proficiency
- (INZCFSTW) Cert Found Studies L3 Whitinga
- (INZCC) NZCert Carpentry
- (INZDL) NZDip Landscape
- (INZDB5) NZDip Business (Level 5)
- (INZCE2) NZCert English Language L2
- (INZTEC) Cert Applied Technology
- (SACPB) Study Abrd Cert Proficiency
- (INZCFSTW) Cert Found Studies L3 Whitinga
- (INZCC) NZCert Carpentry
- (INZDL) NZDip Landscape
- (INZDB5) NZDip Business (Level 5)
- (INZCE2) NZCert English Language L2
- (INZTEC) Cert Applied Technology
- (SACPB) Study Abrd Cert Proficiency
- (INZCFSTW) Cert Found Studies L3 Whitinga
- (INZCC) NZCert Carpentry
- (INZDL) NZDip Landscape
- (INZDB5) NZDip Business (Level 5)
- (INZCE2) NZCert English Language L2
- (INZTEC) Cert Applied Technology
- (SACPB) Study Abrd Cert Proficiency
- (INZCFSTW) Cert Found Studies L3 Whitinga
- (INZCC) NZCert Carpentry
- (INZDL) NZDip Landscape
- (INZDB5) NZDip Business (Level 5)
- (INZCE2) NZCert English Language L2
- (INZTEC) Cert Applied Technology
- (SACPB) Study Abrd Cert Proficiency
- (INZCFSTW) Cert Found Studies L3 Whitinga
- (INZCC) NZCert Carpentry
- (INZDL) NZDip Landscape
- (INZDB5) NZDip Business (Level 5)
- (INZCE2) NZCert English Language L2
- (INZTEC) Cert Applied Technology
- (SACPB) Study Abrd Cert Proficiency
- (INZCFSTW) Cert Found Studies L3 Whitinga
- (INZCC) NZCert Carpentry
- (INZDL) NZDip Landscape
- (INZDB5) NZDip Business (Level 5)
- (INZCE2) NZCert English Language L2
- (INZTEC) Cert Applied Technology
- (SACPB) Study Abrd Cert Proficiency
- (INZCFSTW) Cert Found Studies L3 Whitinga
- (INZCC) NZCert Carpentry
- (INZDL) NZDip Landscape
- (INZDB5) NZDip Business (Level 5)
- (INZCE2) NZCert English Language L2
- (INZTEC) Cert Applied Technology
- (SACPB) Study Abrd Cert Proficiency
- (INZCFSTW) Cert Found Studies L3 Whitinga
- (INZCC) NZCert Carpentry
- (INZDL) NZDip Landscape
- (INZDB5) NZDip Business (Level 5)
- (INZCE2) NZCert English Language L2
- (INZTEC) Cert Applied Technology
- (SACPB) Study Abrd Cert Proficiency
- (INZCFSTW) Cert Found Studies L3 Whitinga
- (INZCC) NZCert Carpentry
- (INZDL) NZDip Landscape
- (INZDB5) NZDip Business (Level 5)
- (INZCE2) NZCert English Language L2
- (INZTEC) Cert Applied Technology
- (SACPB) Study Abrd Cert Proficiency
- (INZCFSTW) Cert Found Studies L3 Whitinga
- (INZCC) NZCert Carpentry
- (INZDL) NZDip Landscape
- (INZDB5) NZDip Business (Level 5)
- (INZCE2) NZCert English Language L2
- (INZTEC) Cert Applied Technology
- (SACPB) Study Abrd Cert Proficiency
- (INZCFSTW) Cert Found Studies L3 Whitinga
- (INZCC) NZCert Carpentry
- (INZDL) NZDip Landscape
- (INZDB5) NZDip Business (Level 5)
- (INZCE2) NZCert English Language L2
- (INZTEC) Cert Applied Technology
- (SACPB) Study Abrd Cert Proficiency
- (INZCFSTW) Cert Found Studies L3 Whitinga
- (INZCC) NZCert Carpentry
- (INZDL) NZDip Landscape
- (INZDB5) NZDip Business (Level 5)
- (INZCE2) NZCert English Language L2
- (INZTEC) Cert Applied Technology
- (SACPB) Study Abrd Cert Proficiency
- (INZCFSTW) Cert Found Studies L3 Whitinga
- (INZCC) NZCert Carpentry
- (INZDL) NZDip Landscape
- (INZDB5) NZDip Business (Level 5)
- (INZCE2) NZCert English Language L2
- (INZTEC) Cert Applied Technology
- (SACPB) Study Abrd Cert Proficiency
- (INZCFSTW) Cert Found Studies L3 Whitinga
- (INZCC) NZCert Carpentry
- (INZDL) NZDip Landscape
- (INZDB5) NZDip Business (Level 5)
- (INZCE2) NZCert English Language L2
- (INZTEC) Cert Applied Technology
- (SACPB) Study Abrd Cert Proficiency
- (INZCFSTW) Cert Found Studies L3 Whitinga
- (INZCC) NZCert Carpentry
- (INZDL) NZDip Landscape
- (INZDB5) NZDip Business (Level 5)
- (INZCE2) NZCert English Language L2
- (INZTEC) Cert Applied Technology
- (SACPB) Study Abrd Cert Proficiency
- (INZCFSTW) Cert Found Studies L3 Whitinga
- (INZCC) NZCert Carpentry
- (INZDL) NZDip Landscape
- (INZDB5) NZDip Business (Level 5)
- (INZCE2) NZCert English Language L2
- (INZTEC) Cert Applied Technology
- (SACPB) Study Abrd Cert Proficiency
- (INZCFSTW) Cert Found Studies L3 Whitinga
- (INZCC) NZCert Carpentry
- (INZDL) NZDip Landscape
- (INZDB5) NZDip Business (Level 5)
- (INZCE2) NZCert English Language L2
- (INZTEC) Cert Applied Technology
- (SACPB) Study Abrd Cert Proficiency
- (INZCFSTW) Cert Found Studies L3 Whitinga
- (INZCC) NZCert Carpentry
- (INZDL) NZDip Landscape
- (INZDB5) NZDip Business (Level 5)
- (INZCE2) NZCert English Language L2
- (INZTEC) Cert Applied Technology
- (SACPB) Study Abrd Cert Proficiency
- (INZCFSTW) Cert Found Studies L3 Whitinga
- (INZCC) NZCert Carpentry
- (INZDL) NZDip Landscape
- (INZDB5) NZDip Business (Level 5)
- (INZCE2) NZCert English Language L2
- (INZTEC) Cert Applied Technology
- (SACPB) Study Abrd Cert Proficiency
- (INZCFSTW) Cert Found Studies L3 Whitinga
- (INZCC) NZCert Carpentry
- (INZDL) NZDip Landscape
- (INZDB5) NZDip Business (Level 5)
- (INZCE2) NZCert English Language L2
- (INZTEC) Cert Applied Technology
- (SACPB) Study Abrd Cert Proficiency
- (INZCFSTW) Cert Found Studies L3 Whitinga
- (INZCC) NZCert Carpentry
- (INZDL) NZDip Landscape
- (INZDB5) NZDip Business (Level 5)
- (INZCE2) NZCert English Language L2
- (INZTEC) Cert Applied Technology
- (SACPB) Study Abrd Cert Proficiency
- (INZCFSTW) Cert Found Studies L3 Whitinga
- (INZCC) NZCert Carpentry
- (INZDL) NZDip Landscape
- (INZDB5) NZDip Business (Level 5)
- (INZCE2) NZCert English Language L2
- (INZTEC) Cert Applied Technology
- (SACPB) Study Abrd Cert Proficiency
- (INZCFSTW) Cert Found Studies L3 Whitinga
- (INZCC) NZCert Carpentry
- (INZDL) NZDip Landscape
- (INZDB5) NZDip Business (Level 5)
- (INZCE2) NZCert English Language L2
- (INZTEC) Cert Applied Technology
- (SACPB) Study Abrd Cert Proficiency
- (INZCFSTW) Cert Found Studies L3 Whitinga
- (INZCC) NZCert Carpentry
- (INZDL) NZDip Landscape
- (INZDB5) NZDip Business (Level 5)
- (INZCE2) NZCert English Language L2
- (INZTEC) Cert Applied Technology
- (SACPB) Study Abrd Cert Proficiency
- (INZCFSTW) Cert Found Studies L3 Whitinga
- (INZCC) NZCert Carpentry
- (INZDL) NZDip Landscape
- (INZDB5) NZDip Business (Level 5)
- (INZCE2) NZCert English Language L2
- (INZTEC) Cert Applied Technology
- (SACPB) Study Abrd Cert Proficiency
- (INZCFSTW) Cert Found Studies L3 Whitinga
- (INZCC) NZCert Carpentry
- (INZDL) NZDip Landscape
- (INZDB5) NZDip Business (Level 5)
- (INZCE2) NZCert English Language L2
- (INZTEC) Cert Applied Technology
- (SACPB) Study Abrd Cert Proficiency
- (INZCFSTW) Cert Found Studies L3 Whitinga
- (INZCC) NZCert Carpentry
- (INZDL) NZDip Landscape
- (INZDB5) NZDip Business (Level 5)
- (INZCE2) NZCert English Language L2
- (INZTEC) Cert Applied Technology
- (SACPB) Study Abrd Cert Proficiency
- (INZCFSTW) Cert Found Studies L3 Whitinga
- (INZCC) NZCert Carpentry
- (INZDL) NZDip Landscape
- (INZDB5) NZDip Business (Level 5)
- (INZCE2) NZCert English Language L2
- (INZTEC) Cert Applied Technology
- (SACPB) Study Abrd Cert Proficiency
- (INZCFSTW) Cert Found Studies L3 Whitinga
- (INZCC) NZCert Carpentry
- (INZDL) NZDip Landscape
- (INZDB5) NZDip Business (Level 5)
- (INZCE2) NZCert English Language L2
- (INZTEC) Cert



2018 Under 25yrs Successful Course Completions Rates

2018 Under 25yrs Student Course Completion Rates

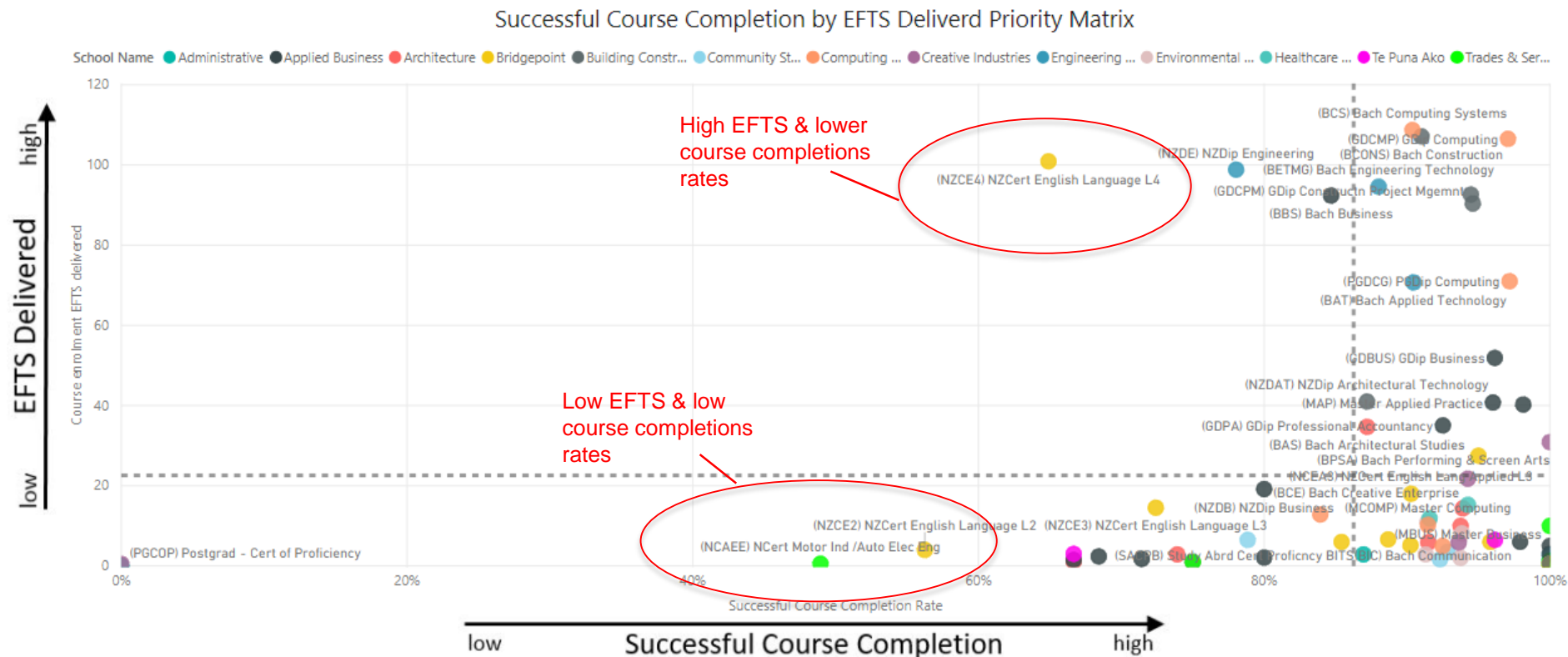
School Name	Programme Code And Name	Under 25yrs Student Headcount	Successful Course Completion Rate
Administrative	(PGCOP) Postgrad - Cert of Proficiency	71	91.2%
	(SACPB) Study Abrd Cert Proficiency BITS	3	76.9%
Applied Business	(GDEC) GDip Event Communication	3	100.0%
	(MBUS) Master Business	1	100.0%
	(PGDBS) PGDip Business	5	100.0%
	(GDBUS) GDip Business	37	93.2%
	(MAP) Master Applied Practice	7	93.2%
	(GDPA) GDip Professional Accountancy	22	90.8%
	(BIC) Bach Communication	38	87.2%
	(NZCR) NZ Cert Retail	12	86.7%
	(BBS) Bach Business	179	76.9%
	(NZCRE) NZCert Real Estate Salesperson	66	72.7%
	(NZDB) NZDip Business	33	69.1%
	(NZDB5) NZDip Business (Level 5)	33	37.4%
Architecture	(NZCLD) NZCert Horticulture Services	2	100.0%
	(DID) Dip Applied Interior Design	28	93.6%
	(MARCP) Master Architecture Professnal	94	92.1%
	(BLA) Bach Landscape Architecture	55	83.2%
	(BAS) Bach Architectural Studies	266	81.6%
	(DLD) Dip Landscape Design	3	75.0%
Bridgepoint	(NZDL) NZDip Landscape	6	34.5%
	(BA) Bach Arts	6	95.8%
	(NZCE5) NZCert English Language L5	26	90.9%
	(NZCLT) NZCert Language Teaching	5	88.9%
	(NCEA3) NZCert English Lang Applied L3	43	88.5%
	(NZCSL) NZCert Skills Living & Working	52	86.9%
	(NCEG4) NZCert English Lang General L4	2	75.0%
	(CUP) Cert University Preparation	169	72.0%
	(NZCSC) NZCert Study Career Preparatn	400	61.1%
	(NZCE3) NZCert English Language L3	36	60.0%
	(NZCE2) NZCert English Language L2	21	59.6%
	(NZCE4) NZCert English Language L4	143	59.4%
	(NZCSP) NZCert Study Career Preparatn	82	58.0%
	(CFSTW) Cert Found Studies L3 Whitinga	1	0.0%
	(CLI) Cert Liaison Interpreting	3	0.0%
Building Construction	(GDPCM) GDip Constructn Project Mgemnt	66	94.0%
	(DATB) Dip Applied Technology Buildg	26	89.2%
	(BCONS) Bach Construction	214	85.2%
	(NZDC) NZDip Construction	146	82.6%
	(NZDAT) NZDip Architectural Technology	140	73.8%
	(NZCCM) NZCert Const Rltd Trd Main Sup	2	52.5%
Community Studies	(NDAT) NDip Architectural Technology	2	33.3%
	(BASHB) Bach Applied Science/Human Bio	35	88.5%
	(BTECE) Bach Teaching Early Childhd Ed	112	83.9%
	(BSPT) Bach Sport	48	80.1%
	(BHSD) Bach Health Social Development	37	76.7%
	(MOST) Master Osteopathy	22	76.1%
	(DSSM) Dip Sport & Fitness Education	20	54.0%

School Name	Programme Code And Name	Under 25yrs Student Headcount	Successful Course Completion Rate
Computing & Information Technology	(MCOMP) Master Computing	5	100.0%
	(GDGMP) GDip Computing	52	94.0%
	(PGDCG) PGDip Computing	18	93.2%
	(NZCIT) NZCert Info Tech Essentials	42	85.5%
	(DITS) Dip Information Technolgy Supt	28	83.8%
	(BCS) Bach Computing Systems	240	80.5%
Creative Industries	(CCINT) Cert Information Technology	1	0.0%
	(PGDCP) PGDip Creative Practice	3	100.0%
	(BPBA) Bach Performing & Screen Arts	223	96.4%
	(CDVA) Cert Design and Visual Arts	8	85.6%
	(BCE) Bach Creative Enterprise	92	85.1%
	(DCMUS) Dip Contemporary Music	20	84.9%
	(MCP) Master Creative Practice	3	33.3%
Engineering & Applied Technology	(NDSYG) NDip Surveying	1	100.0%
	(BAT) Bach Applied Technology	94	87.5%
	(BETMG) Bach Engineering Technology	173	79.6%
	(NCEE2) NCert Electrical Eng (Level 2)	49	78.8%
	(NZDE) NZDip Engineering	205	62.7%
	(NZDS) NZDip Surveying	21	61.6%
Environmental & Animal Sciences	(NZCEE) NZCert Electrical Engineering	77	53.0%
	(NZDVN) NZDip Veterinary Nursing	31	84.3%
	(BASCI) Bach Applied Science	72	82.1%
	(CANWI) Cert Animal Welfare Investgtns	11	77.9%
	(NZCAM) NZCert Animal Management	46	74.9%
	(NZCAT) NZCert Animal Technology	68	74.9%
Healthcare & Social Practice	(NZCAC) NZCert Animal Care	78	55.2%
	(DVETN) Dip Veterinary Nursing	1	0.0%
	(NCMHA) NCert Mental Hlth Addictn Supt	4	100.0%
	(BHSMI) Bach Health Sci/Medical Imagin	58	96.2%
	(PGDCN) PGDip Counselling	3	93.3%
	(BN) Bach Nursing	88	92.2%
	(BSOCP) Bach Social Practice	7	85.4%
	(BSP) Bach Social Practice	66	73.7%
	(BNURS) Bach Nursing	69	66.7%
	(NZCHW) NZCert Health Wellbeing SocCom	2	8.3%
Mindlab	(PGCAP) PGCert Applied Practice	53	82.7%
	(MTEL) Master Teachg & Educatr Ldrshp	14	36.9%
Trades & Services	(NCDLG) NCert Drainlaying	27	97.5%
	(CCSS) Cert Construction Site Safety	41	95.5%
	(NCAEN) NCert Motor Ind/Auto Engin	44	79.9%
	(NZCAE) NZCert Automotive Engineering	288	75.6%
	(NZCPG) NZCert Plumb Gasfit Drainlay	32	71.3%
	(CPGFT) Cert Plumbing and Gasfitting	79	68.8%
	(NZCCT) NZCert Constructn Trade Skills	203	62.9%
	(NZCME) NZCert Mechanical Engineering	21	60.3%
	(NCAEE) NCert Motor Ind /Auto Elec Eng	12	55.2%
	(CATEC) Cert Applied Technology	13	52.0%
	(NZCC) NZCert Carpentry	55	20.8%
	(NZCPD) NZCert Plumbing & Drainlaying	48	0.0%

Programme Priority Matrix – International students

This matrix plots each programme's value (number of EFTS delivered) by performance (successful course completion rate) so that you can visually see which programmes need priority attention. Those positioned top left are considered a priority (higher value with lower performance when compared to other programmes in each school) while those top right are considered strong performers (high value with high performance).

For International students, the programme with the highest EFTS delivered coupled by relatively lower course completion rates is NZCert English Language L4.





2018 International Successful Course Completions Rates

2018 International Student Course Completion Rates

School Name	Programme Code And Name	International Student Headcount	Successful Course Completion Rate
Administrative	(SACPB) Study Abrd Cert Proficncy BITS	8	87.0%
	(PGCOP) Postgrad - Cert of Proficiency	1	0.0%
Applied Business	(GDEC) GDip Event Communication	3	100.0%
	(MBUS) Master Business	11	100.0%
	(PGDBS) PGDip Business	61	98.1%
	(BIC) Bach Communication	6	97.9%
	(GDBUS) GDip Business	74	96.1%
	(MAP) Master Applied Practice	54	96.0%
	(GDPA) GDip Professional Accountancy	52	92.5%
	(BBS) Bach Business	154	84.7%
	(NZCRE) NZCert Real Estate Salesperson	5	80.0%
	(NZDB) NZDip Business	27	80.0%
	(PGDIC) PGDip Inter Communic	3	71.4%
Architecture	(NZDB5) NZDip Business (Level 5)	4	68.4%
	(MIC) Master Internatl Communication	5	66.7%
	(BLA) Bach Landscape Architecture	15	93.9%
	(MARCP) Master Architecture Professnal	21	93.8%
	(DID) Dip Applied Interior Design	7	91.5%
	(BAS) Bach Architectural Studies	37	87.2%
	(DLD) Dip Landscape Design	4	73.9%
	(NZDL) NZDip Landscape	3	66.7%
	(NCEG4) NZCert English Lang General L4	1	100.0%
	(NZCLT) NZCert Language Teaching	1	100.0%
	(BA) Bach Arts	6	95.8%
Bridgepoint	(NZCE5) NZCert English Language L5	65	95.0%
	(NCEA3) NZCert English Lang Applied L3	40	90.3%
	(CUP) Cert University Preparation	10	90.2%
	(NZCSP) NZCert Study Career Preparatn	13	88.7%
	(NZCSC) NZCert Study Career Preparatn	12	85.4%
	(NZCE3) NZCert English Language L3	39	72.4%
	(NZCE4) NZCert English Language L4	190	64.9%
	(NZCE2) NZCert English Language L2	7	56.3%

School Name	Programme Code And Name	International Student Headcount	Successful Course Completion Rate
Building Construction	(NDQS) NDip Quantity Surveying	1	100.0%
	(GDCPM) GDip Constructn Project Mgemnt	133	94.6%
	(NZDC) NZDip Construction	115	94.5%
	(BCONS) Bach Construction	131	91.0%
	(NZDAT) NZDip Architectural Technology	52	87.2%
Community Studies	(BHSD) Bach Health Social Development	1	100.0%
	(BTECE) Bach Teaching Early Childhd Ed	1	100.0%
	(BSPT) Bach Sport	6	92.9%
	(BASHB) Bach Applied Science/Human Bio	3	92.3%
	(DSSM) Dip Sport & Fitness Education	7	78.8%
Computing & Information Technology	(PGDCG) PGDip Computing	110	97.2%
	(GDCMP) GDip Computing	160	97.1%
	(NZCIT) NZCert Info Tech Essentials	10	92.5%
	(MCOMP) Master Computing	22	91.5%
	(BCS) Bach Computing Systems	131	90.4%
	(DITS) Dip Information Technolgy Supt	19	83.9%
Creative Industries	(BPSA) Bach Performing & Screen Arts	32	100.0%
	(BCE) Bach Creative Enterprise	25	94.3%
	(PGDCP) PGDip Creative Practice	9	93.6%
	(DCMUS) Dip Contemporary Music	1	75.0%
	(MCP) Master Creative Practice	1	0.0%
Engineering & Applied Technology	(NZDS) NZDip Surveying	3	100.0%
	(BAT) Bach Applied Technology	82	90.5%
	(BETMG) Bach Engineering Technology	108	88.0%
	(NZDE) NZDip Engineering	127	78.0%
Environmental & Animal Sciences	(BASCI) Bach Applied Science	11	93.8%
	(NZCAM) NZCert Animal Management	2	93.8%
	(NZCAT) NZCert Animal Technology	13	91.4%
	(NZDVN) NZDip Veterinary Nursing	4	91.3%
Healthcare & Social Practice	(BHSMI) Bach Health Sci/Medical Imagin	2	100.0%
	(BSP) Bach Social Practice	2	100.0%
	(BN) Bach Nursing	18	94.3%
	(BNURS) Bach Nursing	14	91.6%
Te Puna Ako	(PGDSM) PGDip Educational Ldrshp & Mgt	12	96.2%
	(MEDM) Master Educational Ldrship Mgt	4	66.7%
Trades & Services	(CPGFT) Cert Plumbing and Gasfitting	1	100.0%
	(NCAEN) NCert Motor Ind/Auto Engin	1	100.0%
	(NZCAE) NZCert Automotive Engineering	15	100.0%
	(NZCCT) NZCert Constructn Trade Skills	1	75.0%
	(NCAEE) NCert Motor Ind /Auto Elec Eng	2	48.9%



Next Steps

- This report is a first step towards providing greater visibility into student academic performance for Unitec. The quality of data available is still limited and Te Korowai Kahurangi are currently sourcing more data sources and developing greater reporting with the intent to improve our analysis and understanding of our students' success.
- Reporting currently under development:
 1. Educational Performance Indicators (EPIs) – course completion, first year retention, qualification completion, progression
 2. Graduate outcomes – graduate employed/ further study, relevance of qualification to employment
 3. Student experience – student course evaluations, student net promoter score (NPS), joining experience
 4. Grade processing – grade approval performance, outstanding grades
- Next steps from this report are:
 1. Review of grade approval and qualification processes, time frames and organisational adherence to policy
 2. Detailed analysis of priority group performance across all schools
 3. Detailed analysis of course completion to qualification completion variance by school/programme