



## Examination Process of Postgraduate Research Components of 60 Credits or Less

### CONTENTS

<b>1. PURPOSE</b>	<b>2</b>
<b>2. DEFINITIONS</b>	<b>2</b>
<b>3. PROCESS</b>	<b>2</b>
<b>REFERENCE DOCUMENTS</b>	<b>3</b>
<b>DOCUMENT DETAILS</b>	<b>3</b>
<b>AMENDMENT HISTORY</b>	<b>3</b>

# 1. PURPOSE

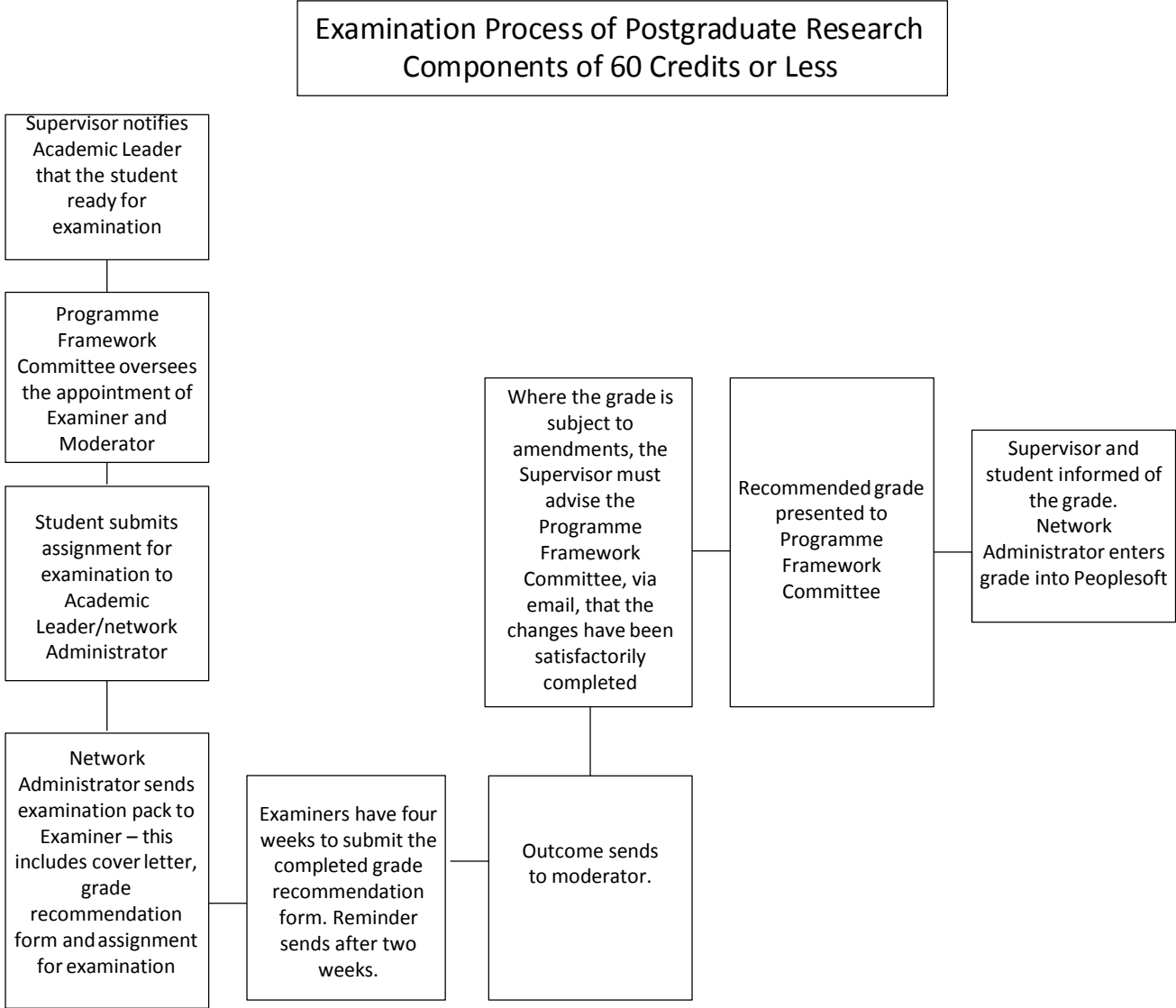
The examination process of 45 and 60 credit assignments is conducted by the relevant Programme Framework Committee. This document outlines the process that Programme Framework Committees are to take in the examination of these assignments.

# 2. DEFINITIONS

Postgraduate Research Component	Means a piece of research that is recognised as a part of Masters Studies. This may be made up of a dissertation of 60 credits, a research project of 45 or 60 credits.
---------------------------------	---

# 3. PROCESS

The process below sets out the path that postgraduate research components of 60 credits or less must follow.



### 3.1. Examiners

Research components of 60 credits or less are assigned one examiner. Persons who have acted as a candidate's supervisor must not be appointed as examiner of that candidate's research.

### 3.2. Grade Recommendation Form

The Grade Recommendation form can be found on The Nest and must be used for all examinations of postgraduate research components.

### 3.3. Moderators

A moderator shall be an experienced examiner for that programme. Where there are multiple examinations in a one year period, the same moderator shall be used for consistency. Where possible, the moderator will not have been that candidate's supervisor or examiner.

### 3.4. Recommended Grade

The Academic Leader takes responsibility for facilitating a final decision in the event there is inability to agree on a final grade. They then present this grade to the Programme Framework Committee.

## REFERENCE DOCUMENTS

- [1] Master Generic Regulations
- [2] [Conduct of Student Research Policy](#)
- [3] [Supervision and Advisement of Student Research Guidelines](#)

Receipt for Submission Assignment 60 Credits or Less form (*found on the Form page on The Nest*)

Grade Recommendation Form (*found on the Form page on The Nest*)

## DOCUMENT DETAILS

<b>Version:</b>	1.1
<b>Document Owner:</b>	Dean, Research and Enterprise
<b>Document Sponsor:</b>	Postgraduate Research and Scholarships Committee
<b>Approved By:</b>	Postgraduate Research and Scholarships Committee
<b>Date Approved:</b>	30.03.2016
<b>Date of Issue:</b>	02.05.2016
<b>Date of First Version Issued:</b>	17.12.2015
<b>Date of Next Review:</b>	December 2018

## AMENDMENT HISTORY

Version	Issue Date	Reason for Revision	Approved by
1	May 2001	First approval	Academic Board
1.1	2 May 2016	Updated to reflect new roles, positions and committee structures	Academic Board